

AC & DC ELECTRIC WINCHES



Features

- Two-braking system mechanical and dynamic
- Fully-enclosed gearing
- Machine cut and hardened gears
- Lightweight
- Emergency handle
- Easily bolts on to OZ davit cranes

* Wire or synthetic rope assembly sold separately

Capacity

OZACW (115V AC): 1200 lb.

OZDCW (12V DC): 1200 lb.

Net Weight

OZACW – 22 lb.

OZDCW – 24 lb.

Maximum Drum Capacity

3/16" diameter wire rope=90' lift

1/4" diameter wire rope=45' lift

Pendant/ Power Cord Length

115V AC: 10' Pendant

10' Power Cord

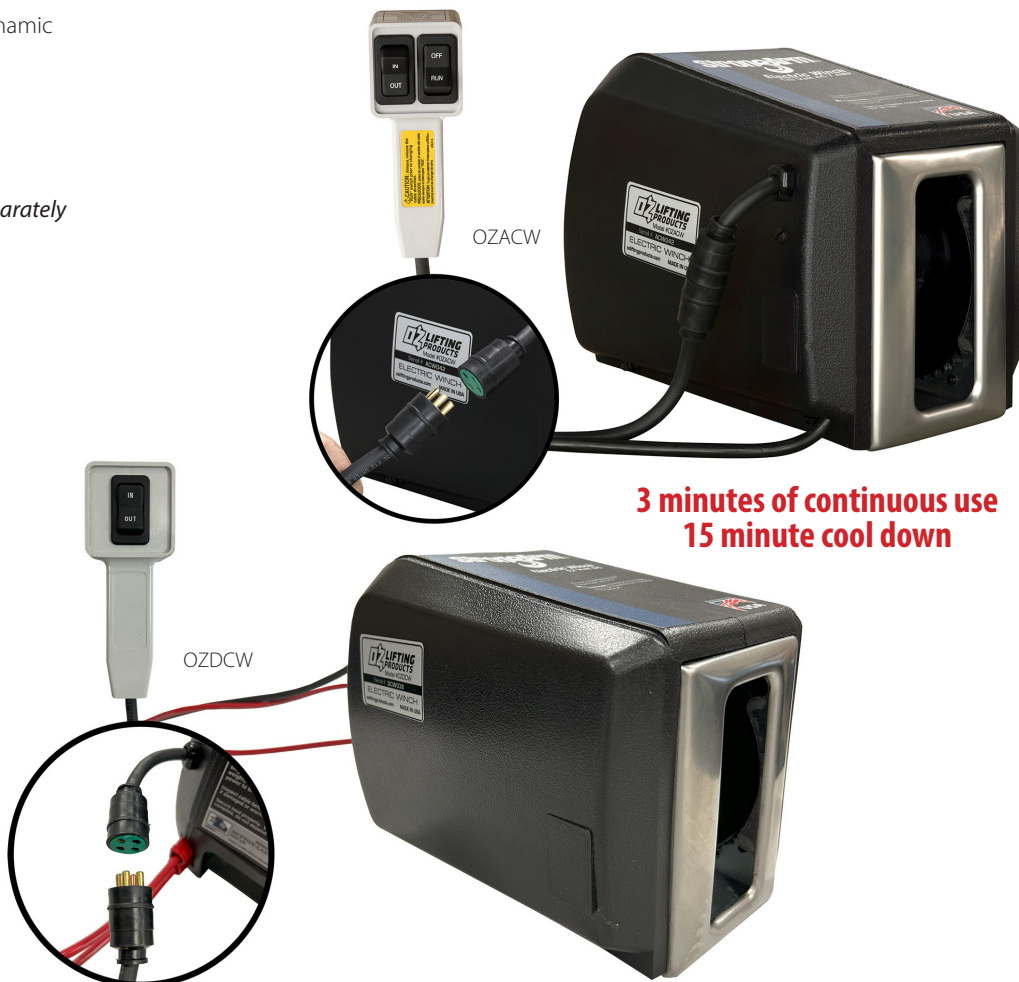
12V DC: 10' Pendant

25' (+) Power Lead

Motor Full Load AMPS

OZACW – 1.0 HP OZACW – 10A

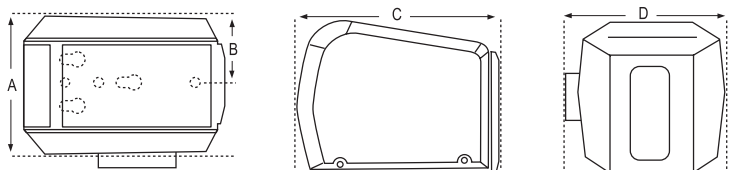
OZDCW – 0.6 HP OZDCW – 70A



**3 minutes of continuous use
15 minute cool down**

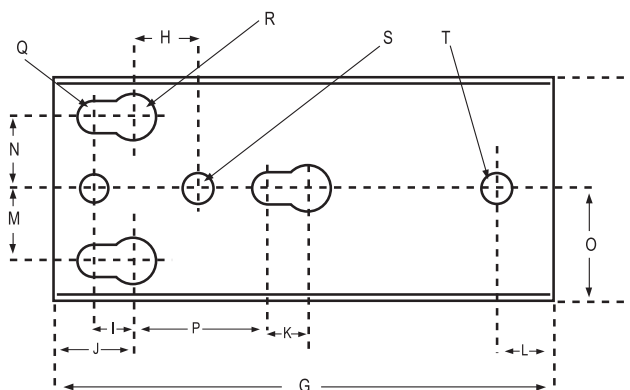
Load Capacity Based on the Amount of Cable	3/16" Cable	1/4" Cable
First Layer (lb.)	800	1200
Mid Drum (lb.)	800	1120
Full (lb.)	800	850

Winch Speed Based on Load & Cable on the Drum	First Layer	Full
AC, No Load (ft/min)	23	35
AC, Full Load (ft/min)	12	16
DC, No Load (ft/min)	21	33
DC, Full Load (ft/min)	5.5	8



Mounting Plate

Dimensions – All Models (in)		Mounting Plate Dimensions – All Models (in)			
A	7.43	F	3.62	K	.62
B	3.57	G	8.68	L	1
C	10.81	H	1.18	M	1.25
D	8.18	I	.625	N	1.25
E	8.12	J	1.37	O	1.81



Dimensions and illustrations are for reference only and subject to change without notice.

