

# STAINLESS DAVIT CRANE

Individually tested and certified at 125% W.L.L

OZSS850DAV, OZSS1500DAV



**850 lb. and 1500 lb. Capacity**

## Features

- 304 stainless steel construction
- RoHS-compliant, electropolished finish
- Food-grade grease meets NSF H1 standards, suitable for food processing
- 4 boom height adjustments
- 360-degree rotation
- Quick connect pins – no tools required for assembly and installation
- Manual DIN-rated stainless steel brake winch with integrated Weston brake
- AC & DC winch options available
- Mast extension, pedestal, wall mount, socket, and wheel bases sold separately
- 2.5:1 safety factor, individually tested and certified at 125%
- Stainless steel ID tag



**Manual winch:** 3/16" - 130 ft max. lift length • 1/4" - 75 ft max. lift length  
**AC/DC Electric Winch:** 3/16" - 90 ft max. lift length • 1/4" - 45 ft max. lift length

## WIRE/SYNTHETIC ROPE ASSEMBLIES

(sold separately) Custom length available.

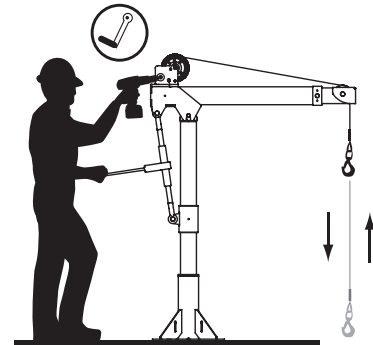
See wire/synthetic rope assembly options page 39

**OZSS1500DAV shown with optional OZPED1-S5 pedestal base and OZSS.25-55B wire rope assembly**

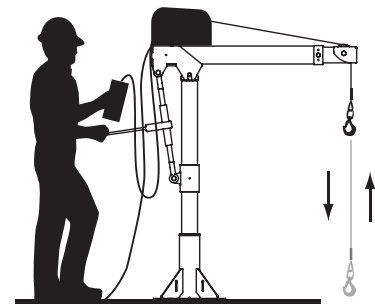
Bases and cable assemblies sold separately

Weight (excluding winch)	Boom	Mast	Net
OZSS850DAV (lb.)	35	29	64
OZSS1500DAV (lb.)	49	50	99

## Options for faster lowering and raising



Detach winch handle for drill option



AC and DC power winches available See page 26

## OZSS850DAV LOAD RATINGS

Based on 3/16 inch stainless steel wire or synthetic rope.

Load Ratings	
Boom Position 1 at 0°	500 lb.
Boom Position 2 at 15°	600 lb.
Boom Position 3 at 30°	700 lb.
Boom Position 4 at 45°	850 lb.

## OZSS1500DAV LOAD RATINGS

Based on 1/4 inch stainless steel wire or 3/16 inch synthetic rope.

Load Ratings	First Layer	Mid Drum	Full Drum
Boom Position 1 at 0°	1000 lb.	1000 lb.	850 lb.
Boom Position 2 at 15°	1200 lb.	1200 lb.	850 lb.
Boom Position 3 at 30°	1300 lb.	1250 lb.	850 lb.
Boom Position 4 at 45°	1500 lb.	1250 lb.	850 lb.

## Engineered for Sanitary & High-Corrosion Applications

### WATER TREATMENT



### WASTEWATER



### AEROSPACE



### FOOD PROCESSING



### PHARMACEUTICAL



Davit crane maintains maximum capacity in all positions. However, the listed load rating reflects manual winch operation, assuming average lifting effort. Handle effort will increase as the cable is spooled onto the drum. Load rating and ease of lifting depend on the specific winch style and the user's lifting effort. Dimensions and illustrations are for reference only and subject to change without notice.

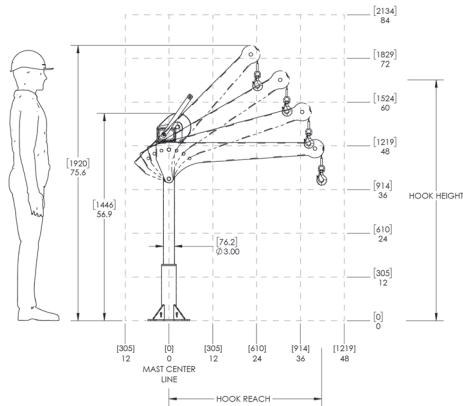


**WARNING**  
 CANCER AND REPRODUCTIVE HARM  
 Some products may contain chemicals known to the state of California to cause cancer, or birth defect or reproductive harm.  
[www.P65Warning.ca.gov](http://www.P65Warning.ca.gov)

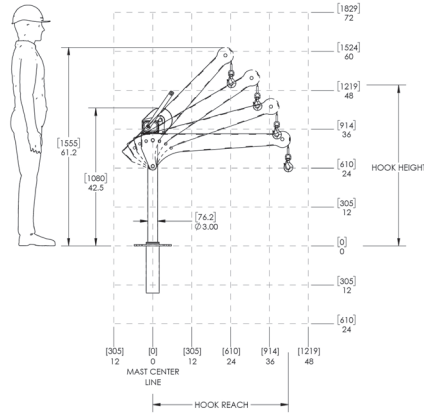


## OZSS850DAV DIMENSIONS

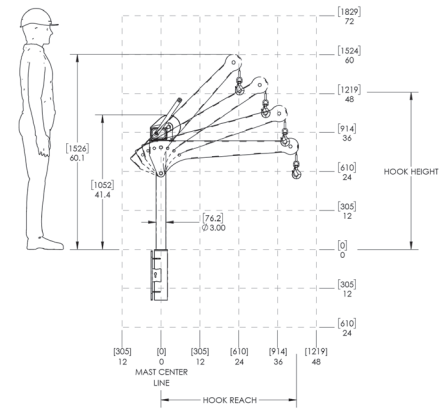
w/ Pedestal Base



w/ Socket Base

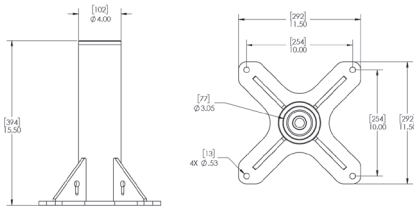


w/ Wall Mount

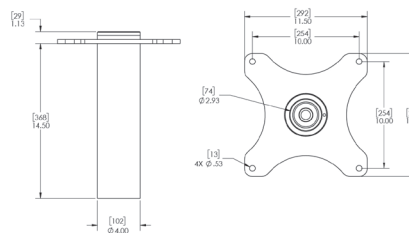


**OZSS850DAV BASES** (sold separately) Comes with mounting template.

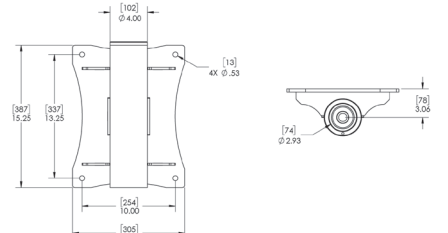
**OZPED2-TPSS**



**OZSOC2-TPSS**

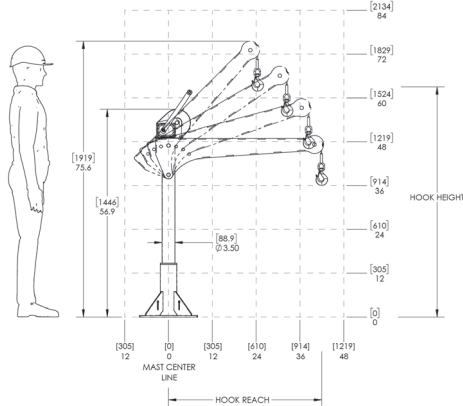


**OZWALL2-TPSS**

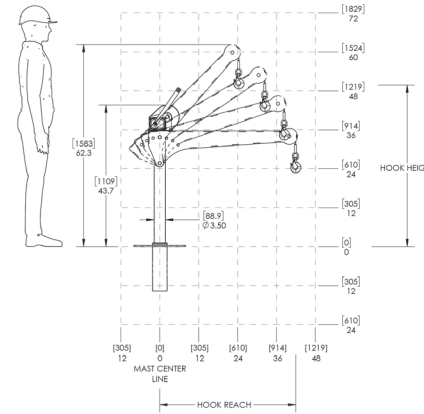


## OZSS1500DAV DIMENSIONS

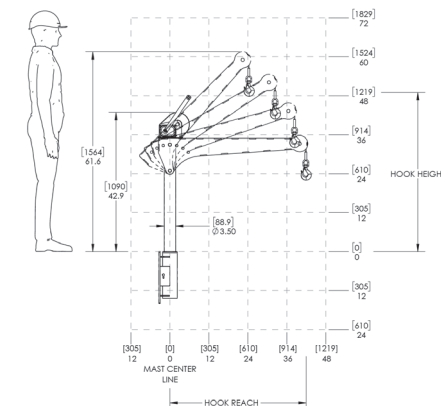
w/ Pedestal Base



w/ Socket Base

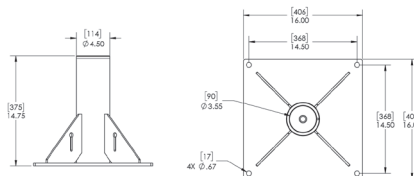


w/ Wall Mount

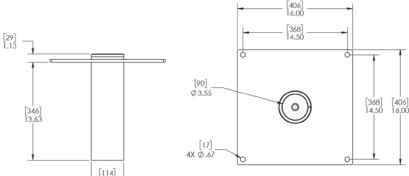


**OZSS1500DAV BASES** (sold separately) Comes with mounting template.

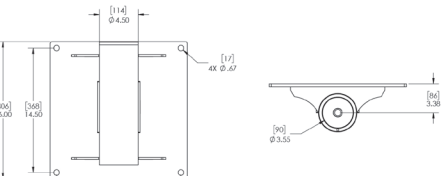
**OZPED1-TPSS**



**OZSOC1-TPSS**



**OZWALL1-TPSS**



Davit crane maintains maximum capacity in all positions. However, the listed load rating reflects manual winch operation, assuming average lifting effort. Handle effort will increase as the cable is spooled onto the drum. Load rating and ease of lifting depend on the specific winch style and the user's lifting effort. Dimensions and illustrations are for reference only and subject to change without notice.

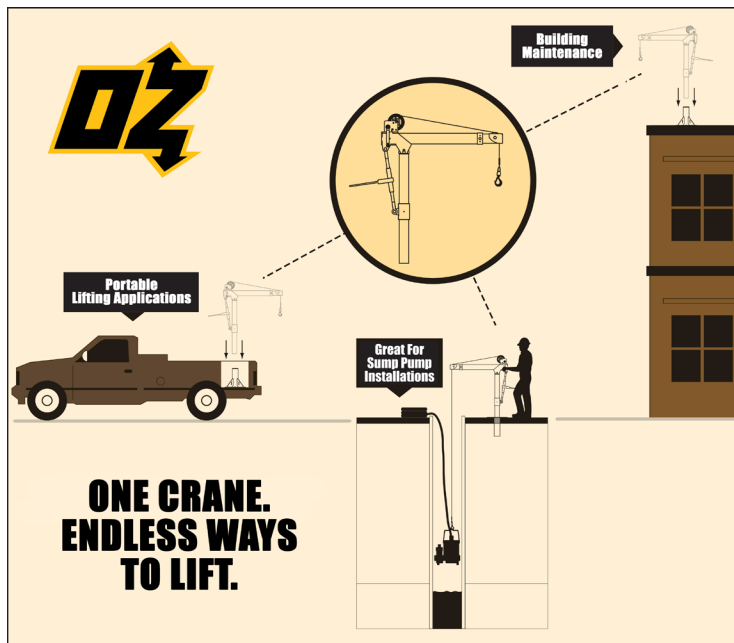
# DAVIT CRANE BASES

**One crane.  
Multiple mounting points.  
Endless ways to lift.**

Portable davit crane systems engineered for fast deployment across multiple lifting locations. OZ's interchangeable bases allow one davit crane to move between compatible mounting points with quick, tool-free installation.

## HOW THE SYSTEM WORKS

1. Install compatible bases where lifting is needed
2. Move one davit crane between locations
3. Insert mast and begin lifting — no tools required



Configure lifting points across facilities, rooftops, trucks, utility access areas, and confined spaces while using a single portable davit crane.

## Features

- One portable davit crane works across multiple compatible bases
- Tool-free mast insertion for fast setup and relocation
- Industrial-strength steel construction
- Available in durable powder coat or electropolished 304 stainless steel
- Includes mounting template for simplified installation
- Multiple mounting styles for rooftop, vehicle, plant, utility, and confined space applications

*\*Davit crane sold separately*

## Additional Base Add-Ons

**MAST EXTENTIONS (add 24 inches of height)**  
OZEXT1-COMP, OZEXT1-TP, OZEXT2, OZEXT2-TP,  
OZEXT1-TPSS, OZEXT2-SS

Available in yellow powder coat or 304 stainless steel

**BACK PLATE (added stability for pedestal or wall bases)**

OZBACK1, OZBACK2, OZBACK1-SS, OZBACK2-SS

Available in steel or 304 stainless steel



### PEDESTAL BASES

OZPED1, OZPED1-TP,  
OZPED2, OZPED2-TP, OZPED3,  
OZPED1-SS, OZPED1-TPSS,  
OZPED2-SS, OZPED2-TPSS

Surface-mounted bases designed for installation on concrete pads, floors, truck beds, and structural platforms.



### SOCKET BASES

OZSOC1, OZSOC1-TP,  
OZSOC2, OZSOC2-TP, OZSOC3,  
OZSOC1-SS, OZSOC1-TPSS,  
OZSOC2-SS, OZSOC2-TPSS

Flush-mounted bases may be core drilled or cast into concrete for low-profile access.



### WALL BASES

OZWALL1, OZWALL1-TP,  
OZWALL2, OZWALL2-TP,  
OZWALL3, OZWALL1-SS,  
OZWALL1-TPSS, OZWALL2-SS,  
OZWALL2-TPSS

Vertical mounting bases engineered for walls and parapets where floor space is limited.

### 1 SERIES BASE COMPATIBILITY:

CompOZite® 1200 (OZ1200DAV)

### 1-TP SERIES BASE COMPATIBILITY

Alumi-Lite® 1000 (OZA1000DAV)

XR Series 1000 (OZXR1000DAV)

Tele-Pro® 1200 (OZTP1200DAV)

Stainless 1500 (OZSS1500DAV)

### 2 SERIES BASE COMPATIBILITY:

Steel 1000 (OZ1000DAV)

CompOZite® Elite 1200 (OZCF1200DAV)

### 2-TP SERIES BASE COMPATIBILITY:

Tele-Pro® 500 (OZTP500DAV)

Stainless 850 (OZSS850DAV)

### 3 SERIES BASE COMPATIBILITY:

Steel 500 (OZ500DAV)

Alumi-Lite® 500 (OZA500DAV)

XR Series 500 (OZXR500DAV)

### 4 SERIES BASE COMPATIBILITY:

Steel 2500 (OZ2500DAV)

Tele-Pro® 2500 (OZTP2500DAV)



**NOW  
AVAILABLE  
IN 304  
STAINLESS  
STEEL!**



Diagram dimensional values are provided in inches. Bracketed values [ ] within diagram represent equivalent measurements in millimeters for informational purposes only. Dimensions and illustrations are for reference only and subject to change without notice.





# WHEEL BASE

For all OZ Lifting Products davit cranes up to 1200 lb. capacity



**OZWB3 shown with OZXR500**  
**OZGAL.19-80B galvanized cable assembly**  
**OZHB10 10lb. headache ball**  
 Davit crane, headache ball, and cable assemblies sold separately.  
 Locking collar included with applicable wheel base kits.

## Features

- Industrial strength steel construction with a durable powder-coat finish
- Floor-anchoring system allows the davit to rotate while under load (when base is not anchored the davit must remain in a forward position when lifting)
- Durable polyurethane-tread indoor/outdoor wheels with rear swivel casters, ensuring smooth mobility and adaptability to various workspaces. Rear casters feature a lock brake for enhanced safety and stability when needed.
- Forklift pockets (for transporting only)

## Includes

**Floor-Anchor Mounting Bolt Kit:** Enhance the stability and safety of your OZ Wheel Base with optional floor-anchoring bolts, ensuring secure attachment to the ground for added peace of mind during operation. Includes four (4) 12" zinc-plated hex head bolts and washers. **Concrete anchor not included.**

**Davit Crane Locking Collar:** This component effectively prevents the crane boom from rotating excessively, eliminating the risk of tipping hazards and ensuring a secure lifting environment. **Included with models OZWB1, OZWB1-TP, OZWB2, OZWB2-TP, and OZWB3.**

**Toolbox Storage Tube:** Keep your tools and Wheel Base accessories organized with this durable and versatile toolbox storage tube, molded from high-density polypropylene and featuring a secure screw-cap and latch closure for secure storage. Zip ties are included for convenient, versatile mounting.

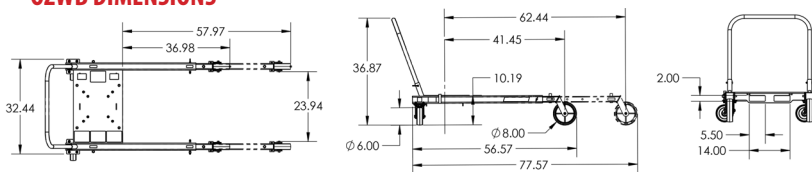
*\*Davit crane sold separately*

<b>OZWB</b>	Wheel Base for OZ Lifting Products davit cranes up to 1200 lb. capacity (pedestal base and locking collar not included)
<b>OZWB1</b>	Wheel Base for use with OZ1200DAV davit crane (pedestal base and locking collar included)
<b>OZWB1-TP</b>	Wheel Base for use with OZTP1200DAV, OZA1000DAV, OZXR1000DAV davit cranes (pedestal base and locking collar included)
<b>OZWB2</b>	Wheel Base for use with OZ1000DAV and OZCF1200DAV davit cranes (pedestal base and locking collar included)
<b>OZWB2-TP</b>	Wheel Base for use with OZTP500DAV davit crane (pedestal base and locking collar included)
<b>OZWB3</b>	Wheel Base for use with OZ500DAV, OZA500DAV and OZXR500DAV davit cranes (pedestal base and locking collar included)

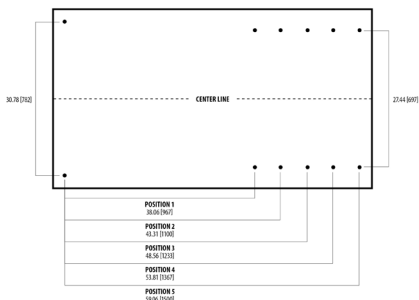
## Floor-Anchoring System with Locking Collar



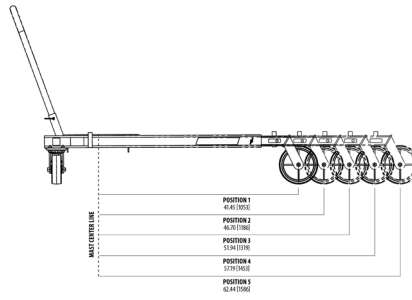
## OZWB DIMENSIONS



## ADJUSTABLE LEG EXTENSIONS



## FLOOR-ANCHORING SYSTEM



## OZWB DAVIT CRANE REACH DIAMETER

Sections are representative of hook reach in 360-degrees

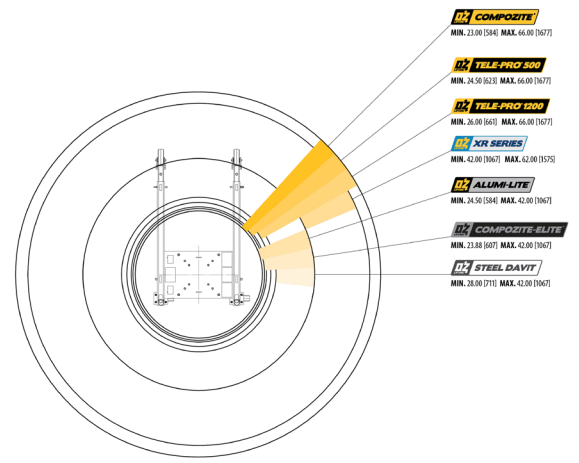


Diagram dimensional values are provided in inches. Bracketed values [ ] within diagram represent equivalent measurements in millimeters for informational purposes only. Dimensions and illustrations are for reference only and subject to change without notice.



# WIRE/SYNTHETIC ROPE ASSEMBLIES

## Steel Wire Rope (For manual winch)

OZGAL.19-80B	3/16" x 80'	Galvanized cable assembly
OZSS.19-80B	3/16" x 80'	Stainless steel cable assembly
OZGAL.25-55B	1/4" x 55'	Galvanized cable assembly
OZSS.25-55B	1/4" x 55'	Stainless steel cable assembly

Above cable assemblies come with swaged ball and swivel hook with latch.

**Custom cable length available.**

3/16" - 80 ft. max. length • 1/4" - 55 ft. max. length

## Steel Wire Rope (For manual and power winch)

OZGAL.19-90	3/16" x 90'	Galvanized cable assembly
OZSS.19-90	3/16" x 90'	Stainless steel cable assembly
OZGAL.25-45	1/4" x 45'	Galvanized cable assembly
OZSS.25-45	1/4" x 45'	Stainless Steel cable assembly

All cable assemblies come with a swivel hook with latch.

**Custom cable length available.**

3/16" - 90 ft. max. length • 1/4" - 45 ft. max. length

## Synthetic Rope

OZSR.19-15	3/16" x 15'	Synthetic Rope
OZSR.19-50	3/16" x 50'	Synthetic Rope
OZSR.19-90	3/16" x 90'	Synthetic Rope
OZSR.25-50	1/4" x 50'	Synthetic Rope
OZSR.25-75	1/4" x 75'	Synthetic Rope
OZSR.31-45	5/16" x 45'	Synthetic Rope

All synthetic rope assemblies come with looped ends and pre-installed swivel hook with latch



## HEADACHE BALL

OZHB10

Keeps your wire rope tensioned even when lowering the hook with no load. Compatible with 3/16" and 1/4" wire rope assemblies. Headache balls sold separately from all davit cranes and wire rope assemblies.



## WIRE ROPE HOLDER

OZWRH

Secure your davit crane's wire rope with our durable and easy-to-use wire rope holder. For use with 3/16" and 1/4" ball end wire rope.



## WINCH COVER

OZECW



This weatherproof winch cover provides additional protection, keeping your electric winch clean, dry, and looking new. It is specially treated for cold weather use and is made from strong, water-resistant, black vinyl, featuring drawstring for quick closure and cable opening for easy installation. Made in the USA.





## DAVIT CRANE COVER

OZDAV-C1, OZDAV-C2

Protect your davit crane from the elements with this waterproof cover. Compatible with all OZ Lifting Products davit cranes.



## DAVIT CRANE MAST EXTENSION

OZEXT1-COMP, OZEXT1-TP, OZEXT2, OZEXT2-TP

Increase the height of your davit crane with our durable and easy-to-install mast extender. This extender is made of high-strength steel and is available in a variety of lengths to fit most davit cranes. Add 24 inches of additional height to your davit crane with this simple and effective solution.



## DAVIT CRANE LOCKING COLLAR



TP500-LC, TP1200-LC, SCF-LC

Keep your davit crane secure and prevent accidental rotation with our durable and easy-to-use locking collar.



## DAVIT CRANE ROLLER BAG

OZRB1

The OZ Lifting Products davit crane roller bag is a durable and convenient way to transport and protect your davit crane. Made of heavy-duty nylon, the bag features a padded interior and reinforced straps to keep your crane safe from scratches and dings. Plus, the convenient roller wheels make it easy to move your crane around. The bag also has a large capacity, so you can easily fit all of your crane's accessories inside.







## APPLICATION DATA SHEET | DAVIT CRANES

Company Name: \_\_\_\_\_ Contact Name: \_\_\_\_\_

Email Address: \_\_\_\_\_ Phone: \_\_\_\_\_

Address: \_\_\_\_\_ City: \_\_\_\_\_ State: \_\_\_\_\_ Zip Code: \_\_\_\_\_

Job Description: \_\_\_\_\_

Weight of Load: \_\_\_\_\_

Length of Lift: \_\_\_\_\_

Davit Arm Reach: \_\_\_\_\_

What Capacity Do You Need and at What Reach?

Height Requirement:

Winch:

☐ Hand ☐ 115V AC ☐ 12V DC

Rope Material:

☐ Galvanized ☐ Stainless Steel ☐ Synthetic

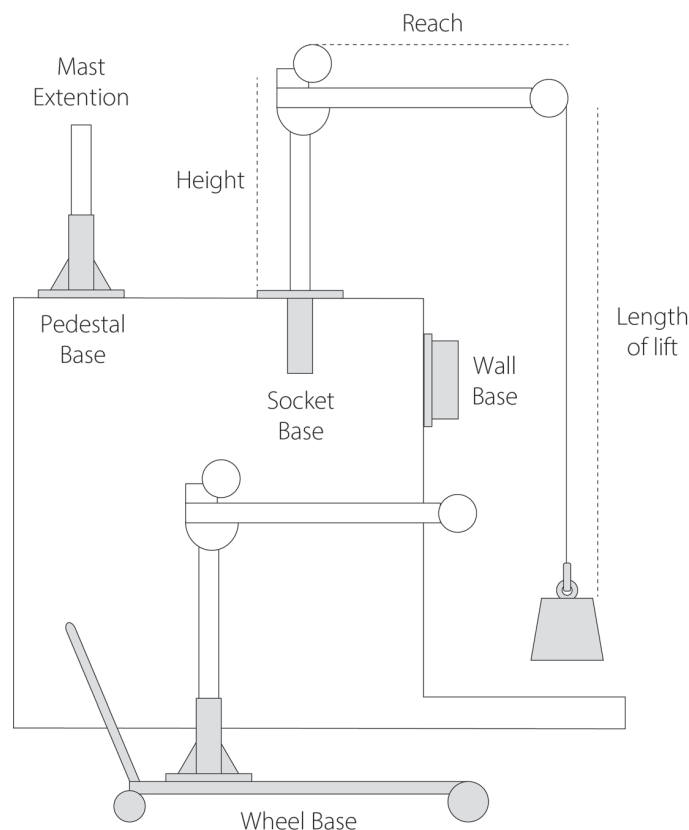
Base Requirements:

☐ Pedestal ☐ Socket ☐ Wall Mount ☐ Wheel

Optional Accessories:

☐ Mast Extension ☐ Headache Ball  
☐ Weatherproof Winch Cover ☐ Weatherproof Davit Cover  
☐ Locking Collar ☐ Wire Rope Holder  
☐ Davit Crane Roller Bag

What Is The Application/Environment?



How Did You Hear About Us? \_\_\_\_\_

*Purchaser is responsible for proper base installation. Approval from a civil or structural engineer is recommended for base installation.*

*OZ Lifting Products davit cranes are thoroughly inspected and tested using a predetermined load. Test certificate included. Base, wire/synthetic rope assembly, and accessories sold separately.*

*Load rating of davit cranes may vary depending on position of boom, wire/synthetic rope length, and winch being used.*

*OZ Lifting Products equipment is not for lifting people or lifting objects over people.*

*If you have any questions about this form, need assistance selecting the right davit crane for your needs, or require a more in-depth consultation, our lifting experts are happy to help! Contact us today to schedule a personalized consultation with a davit crane specialist.*



**FILL OUT  
THIS FORM  
ONLINE**