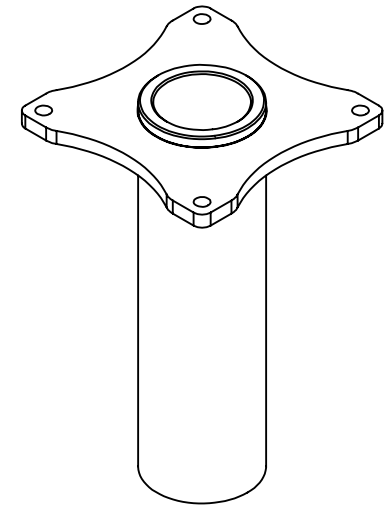
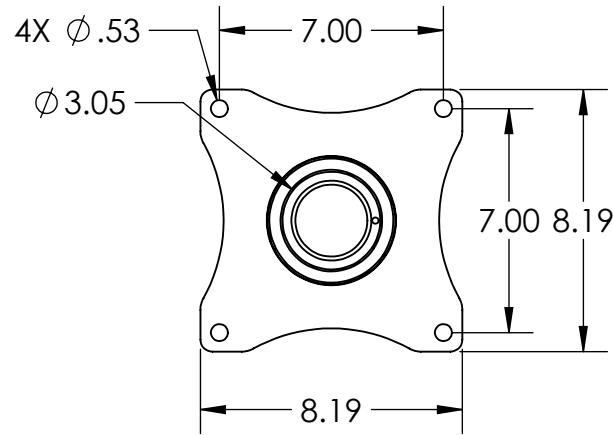
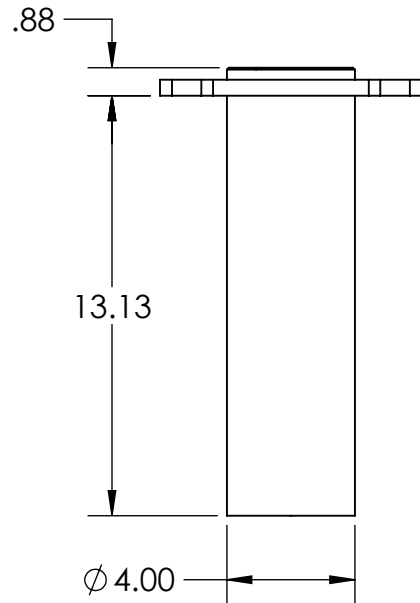


B



ISOMETRIC VIEW

B

A

PROPRIETARY AND CONFIDENTIAL
THE INFORMATION CONTAINED IN THIS
DRAWING IS THE SOLE PROPERTY OF
OZ LIFTING PRODUCTS. ANY
REPRODUCTION IN PART OR AS A WHOLE
WITHOUT THE WRITTEN PERMISSION OF
OZ LIFTING PRODUCTS IS
PROHIBITED.

UNLESS OTHERWISE SPECIFIED:

DIMENSIONS ARE IN INCHES
TOLERANCES:
FRACTIONAL $\pm 1/16$
ANGULAR: MACH $\pm 1/2$ degree
TWO PLACE DECIMAL $\pm .02$
THREE PLACE DECIMAL $\pm .005$

SPECIFIC TOLERANCES TO BE
CALLED OUT IF NEEDED.

MATERIAL

Assembly

FINISH

OZ Yellow Powdercoat

DO NOT SCALE DRAWING

DRAWN

NAME

JMR

DATE

7/16/2024

CHECKED

ENG APPR.

MFG APPR.

Q.A.

COMMENTS:



TITLE:

500lb SOC Base

SIZE

A

Part #

OZSOC3

REV

B

SCALE: 1:6

WEIGHT: 18.39

SHEET 2 OF 2

2

1

A