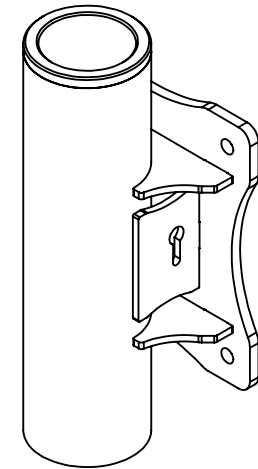
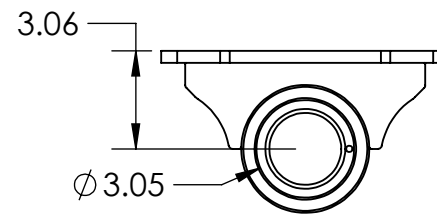
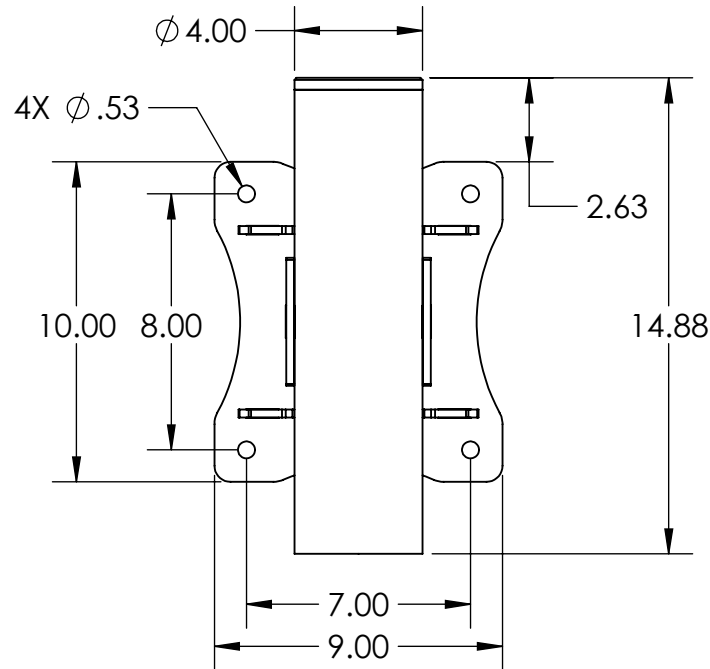


B




ISOMETRIC VIEW

B

A

PROPRIETARY AND CONFIDENTIAL
THE INFORMATION CONTAINED IN THIS DRAWING IS THE SOLE PROPERTY OF OZ LIFTING PRODUCTS. ANY REPRODUCTION IN PART OR AS A WHOLE WITHOUT THE WRITTEN PERMISSION OF OZ LIFTING PRODUCTS IS PROHIBITED.

| | | | | | | | |
|---|--|------------------|------|---|-------------------------------|-------------------|--------------|
| UNLESS OTHERWISE SPECIFIED: | | NAME | DATE |  | | | |
| DIMENSIONS ARE IN INCHES TOLERANCES: FRACTIONAL ± 1/16 ANGULAR: MACH ± 1/2 degree TWO PLACE DECIMAL ±.02 THREE PLACE DECIMAL ±.005 | | DRAWN | JMR | | | | 6/3/2024 |
| | | CHECKED | | | | | |
| | | ENG APPR. | | | | | |
| | | MFG APPR. | | | | | |
| SPECIFIC TOLERANCES TO BE CALLED OUT IF NEEDED. | | Q.A. | | | TITLE: 500lb Wall Base | | |
| MATERIAL Assembly | | COMMENTS: | | | | | |
| FINISH RAL 1018 Powder | | OZ Yellow Powder | | | SIZE A | Part # OZWALL3 | REV B |
| DO NOT SCALE DRAWING | | | | | SCALE: 1:6 | WEIGHT: 24.15 | SHEET 2 OF 2 |

2

1

A