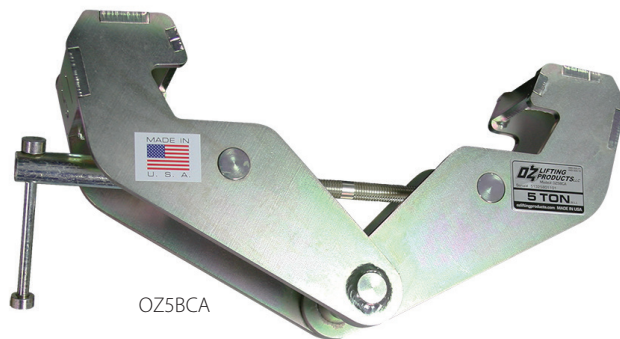
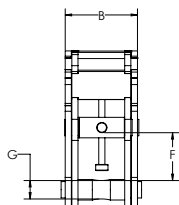
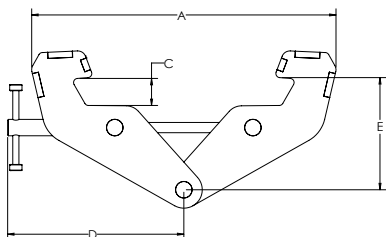


Features

- Robust all-steel construction
- Super-quick adjustment to fit most I-Beams (see measurements below)
- ROHS-compliant zinc-plated finish
- Individual test certificate and serial number
- Made in USA

Standards:

This products meets ASME BTH-1, ASME B30.20 and complies with portions of ASME B30.16 for use with manual and powered hoists.



OZ5BCA



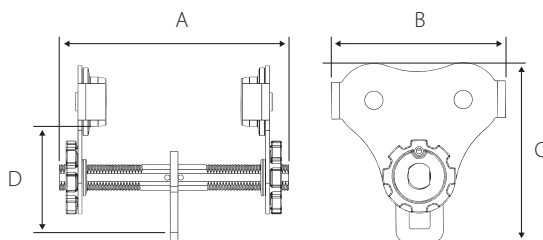
| | OZ1BCA | OZ2BCA | OZ3BCA | OZ5BCA | OZ10BCA | OZ12BCA |
|--|--------|-----------|-----------|-----------|-----------|-----------|
| Capacity (tons) | 1 | 2 | 3 | 5 | 10 | 12 |
| Adjustable Flange Width (in) | 3-9 | 3-9 | 3.5-13 | 3.5-13 | 3.5-13 | 3.5-13 |
| Dimensions (in) | A* | 13.67 | 13.67 | 18.57 | 18.57 | 20.28 |
| | B | 2.51 | 2.91 | 3.94 | 4.41 | 4.72 |
| | C | 0.89 | 0.89 | 1.65 | 1.65 | 1.52 |
| | D | 8.75 | 8.75 | 10.75 | 10.75 | 11.19 |
| | E | 4.38-5.75 | 4.38-5.75 | 6.85-9.00 | 6.85-9.00 | 7.25-9.10 |
| | F** | 1.66 | 1.60 | 3.03 | 2.95 | 2.48 |
| | G | 0.75 | 0.88 | 0.98 | 1.13 | 1.63 |
| Net Weight (lb.) | 8.86 | 10.96 | 21.96 | 25.89 | 39.12 | 43.17 |
| *Distance at maximum adjustable flange width. | | | | | | |
| **Hook clearance at maximum adjustable flange width. | | | | | | |

PUSH BEAM TROLLEY USA



Features

- Fastest adjusting trolley requiring no tools to install
- Lightweight robust construction
- ROHS-compliant zinc-plated finish
- Glow in the dark decals
- Universal wheel tread fits most I, S, and W-Beams
- Precision ball bearing trolley wheels
- Side plates protect trolley wheels
- Anti-drop plate
- Individual test certificate and serial number
- Made in USA



OZ1PBTA
[PATENTED]

Standards - ASME/ANSI B30.17



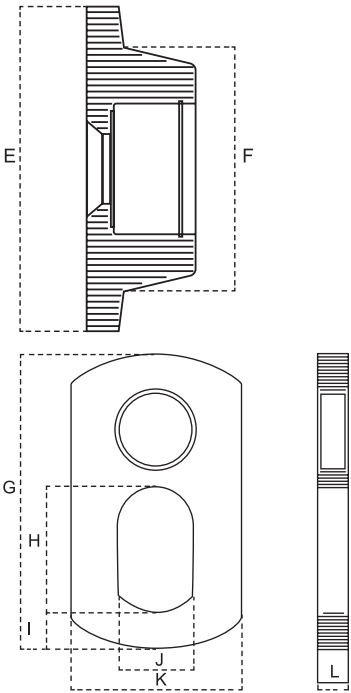
| | OZ05PBTA | OZ05PBTA-12 | OZ05PBTA-16 | OZ1PBTA | OZ1PBTA-12 | OZ1PBTA-16 | OZ2PBTA | OZ3PBTA |
|------------------------------|-----------|-------------|-------------|-----------|------------|------------|-----------|-----------|
| Capacity (tons) | .5 | .5 | .5 | 1 | 1 | 1 | 2 | 3 |
| Adjustable flange width (in) | 2.50-8.00 | 2.50-12.00 | 5.00-16.00 | 2.75-8.00 | 2.75-12.00 | 5.00-16.00 | 3.25-8.00 | 3.25-8.00 |
| Max Flange Thickness (in) | 1.25 | 1.25 | 1.25 | 1.25 | 1.25 | 1.25 | 1.25 | 1.63 |
| Product dimensions | A | 12.52 | 16.52 | 20.52 | 12.73 | 16.73 | 20.73 | 14.87 |
| | B | 8.28 | 8.28 | 8.28 | 10.13 | 10.13 | 10.13 | 12.00 |
| | C | 9.00 | 9.00 | 9.00 | 9.75 | 9.75 | 9.75 | 12.38 |
| | D | 5.44 | 5.44 | 5.44 | 5.38 | 5.38 | 5.38 | 7.25 |
| Minimum radius curve (ft) | 2.75 | 2.75 | 2.75 | 3.35 | 3.35 | 3.35 | 4.50 | 5.00 |
| Net weight (lb.) | 16.55 | 17.74 | 18.95 | 25.72 | 26.88 | 28.09 | 48.08 | 80.41 |



See wheel and bail dimensions on page 19

Dimensions and illustrations are for reference only and subject to change without notice.

PUSH BEAM TROLLEY WHEELS & BAIL DIMENSIONS



USA

| | OZ05PBTA | OZ1PBTA | OZ2PBTA | OZ3PBTA |
|--------|----------|---------|---------|---------|
| E (in) | 3.25 | 4.00 | 4.5 | 5.75 |
| F (in) | 2.38 | 3.00 | 3.25 | 4.38 |
| G (in) | 4.38 | 5.00 | 6.25 | 6.88 |
| H (in) | 1.50 | 1.88 | 2.25 | 2.5 |
| I (in) | 0.63 | 0.63 | 0.88 | 1.0 |
| J (in) | 1.00 | 1.25 | 1.38 | 1.5 |
| K (in) | 2.25 | 2.50 | 3.13 | 3.5 |
| L (in) | 0.38 | 0.50 | 0.50 | 0.63 |

Import

| | OZ025PBT | OZ05PBT | OZ1PBT | OZ2PBT | OZ3PBT | OZ5PBT | OZ10PBT |
|--------|----------|---------|--------|--------|--------|--------|---------|
| E (in) | 2.56 | 2.83 | 3.50 | 4.53 | 5.51 | 6.06 | 6.91 |
| F (in) | 1.77 | 2.05 | 2.48 | 3.35 | 4.13 | 4.60 | 5.24 |
| G (in) | 3.27 | 4.06 | 4.21 | 5.43 | 6.50 | 7.87 | 7.68 |
| H (in) | 1.18 | 1.52 | 1.52 | 2.24 | 2.68 | 3.15 | 4.49 |
| I (in) | 0.59 | 0.75 | 0.75 | 0.83 | 1.02 | 1.44 | 1.91 |
| J (in) | 0.94 | 1.26 | 1.26 | 1.34 | 1.65 | 1.89 | 3.35 |
| K (in) | 1.65 | 2.24 | 2.24 | 3.15 | 3.74 | 4.33 | 11.22 |
| L (in) | 0.24 | 0.31 | 0.39 | 0.47 | 0.16 | 0.71 | 0.79 |



Dimensions and illustrations are for reference only and subject to change without notice.

