

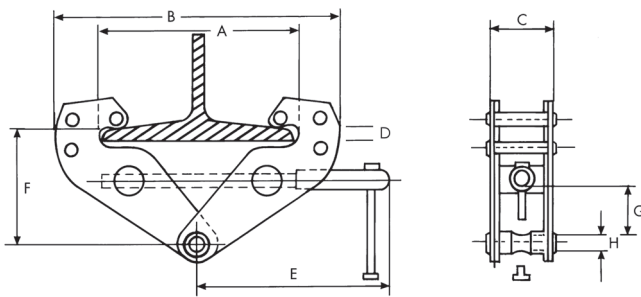
STAINLESS STEEL BEAM CLAMP



Features

- Stainless Steel Type 304 Construction for Corrosion Resistance
- Super-Quick Adjustment to most I-Beams
- Stainless Steel I.D. Tag
- Individual Test Certificate and Serial Number

Standards - CE, ASME/ANSI B30.16, AS4991 (For use with manual or powered hoists)



	OZSS1BC	OZSS2BC	OZSS3BC	OZSS5BC
Capacity (tons)	1	2	3	5
Dimensions (in)	A	2.95-9.05	2.95-9.05	3.15-12.6
	B	12.2 max.	12.2 max.	17.7 max.
	C	2.6	3	4
	D	.94	.94	1.48
	E	7.68	7.68	10.24
	F	5.12-6.57	5.12-6.57	6.89-8.78
	G	1.57	1.57	2.48
	H	.78	.9	1.38
Net Weight (lb.)	9	11	22	26

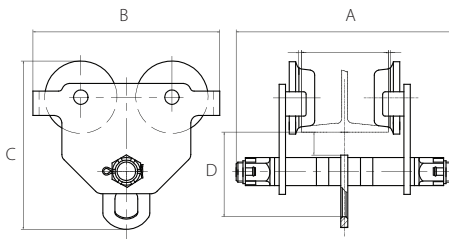
STAINLESS STEEL PUSH BEAM TROLLEY



Features

- Stainless Steel Type 304 Construction for Corrosion Resistance
- Fits to most I, S, and W-Beams
- Individual Test Certificate and Serial Number
- Anti-Drop Plate
- Stainless Steel ID Tag
- Precision Ball Bearing Trolley Wheels with food grade lubricant

Standards - CE, ASME/ANSI B30.17, ASME/ANSI B30.16, AS1418.2 (For use with manual or powered hoists)



	OZSS025PBT	OZSS05PBT	OZSS1PBT	OZSS2PBT	OZSS3PBT	OZSS5PBT
Capacity (tons)	0.25	0.5	1	2	3	5
Adjustable flange width (in)	2-6	2.5-8	2.5-8	3.5-8	4-8	4-8
Max flange thickness (in)	.82	.97	.97	1.11	1.34	1.57
Product dimensions (in)	A	10	12.21	12.8	13.39	14.57
	B	7.7	8.39	9.57	10.75	12.72
	C	6.8	7.8	8.82	10.56	12.96
	D	4	4.61	5.08	6.34	7.76
Minimum radius curve (ft)	3.28	3.28	3.28	4.26	4.26	5.24
Net weight (lb.)	7.7	13.9	22.7	39.7	81.6	114.6

Stainless Steel Geared Beam Trolleys .5 Ton – 5 Ton available. Special order.

