

AC & DC ELECTRIC WINCHES



Features

- Two-braking system mechanical and dynamic
- Overload protection
- Fully-enclosed gearing
- Machine cut and hardened gears
- Lightweight
- CE rated
- Emergency handle
- Quick connection to davit
- Pendant and power cord included
- Easy bolt on winch to OZ davit cranes

Capacity

OZACW (110V AC): 1200 lbs.

OZDCW (12V DC): 1200 lbs.

Custom Overload Settings Available

Drum Capacity

3/16" diameter cable=90'

1/4" diameter cable=45'

Pendant/ Power Cord Length

110V AC: 10' Pendant / 10' Power Cord

12V DC: 10' Pendant / 25' Power Cord

Net Weight

OZACW – 22 lbs.

OZDCW – 24 lbs.

Motor

OZACW – 1.0 HP

OZDCW – 0.6 HP

Full Load AMPS

OZACW – 10A

OZDCW – 70A



OVERLOAD PROTECTED



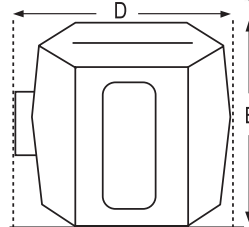
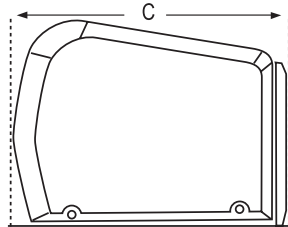
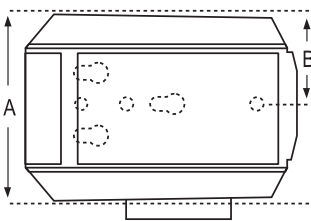
MADE IN USA



*Cable assemblies sold separately

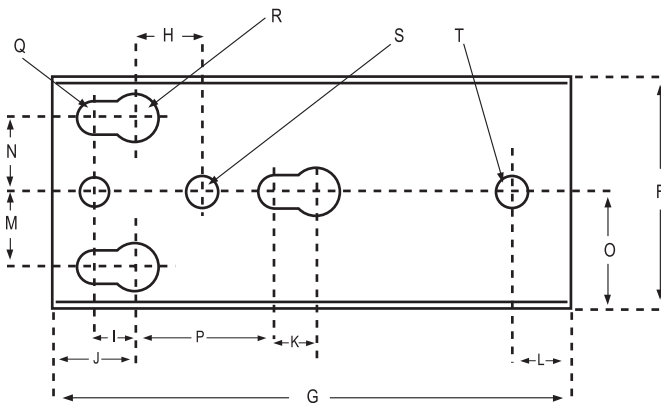
Load Capacity Based on the Amount of Cable	3/16" Cable	1/4" Cable
1st Layer (lbs)	800	1200
Mid. Drum (lbs)	800	1120
Full (lbs)	800	850

Winch Speed Based on Load & Cable on the Drum	First Layer	Full
AC, No Load (ft/min)	23	35
AC, Full Load (ft/min)	12	16
DC, No Load (ft/min)	21	33
DC, Full Load (ft/min)	5.5	8



3 minutes of continuous use
15 minute cool down

*Cable assemblies sold separately



Dimensions – All Models (in)	
A	7.43
B	3.57
C	10.81
D	8.18
E	8.12

Mounting Plate

Mounting Plate Dimensions – All Models (in)		
F	3.62	K .62
G	8.68	L 1
H	1.18	M 1.25
I	.625	N 1.25
J	1.37	O 1.81
		P 3
		Q .53
		R .78
		S .42
		T .50

*Dimensions are for reference only and subject to change without notice.

Galvanized and Stainless Steel Wire Rope

OZGAL.19-90	3/16" x 90'	Galvanized cable assembly
OZSS.19-90	3/16" x 90'	Stainless Steel cable assembly
OZGAL.25-45	1/4" x 45'	Galvanized cable assembly
OZSS.25-45	1/4" x 45'	Stainless Steel cable assembly

