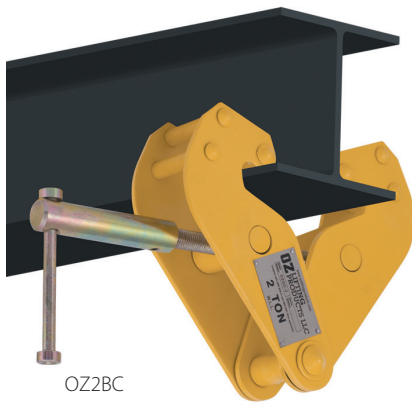


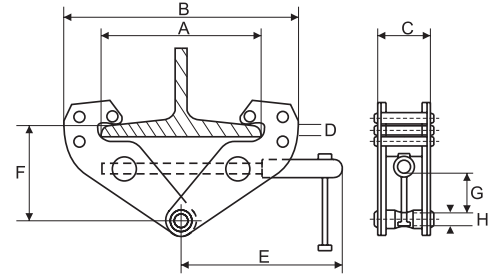
# BEAM CLAMP



OZ2BC

## Features

- Robust, all-steel construction
- Super-quick adjustment to fit most I-Beams (see measurements below)
- Durable baked-enamel paint protection
- Stainless steel ID tag
- Individual test certificate and serial number



	OZ1BC	OZ2BC	OZ3BC	OZ5BC	OZ10BC
Capacity (tons)	1	2	3	5	10
A	2.95-9.05	2.95-9.05	3.15-12.60	3.54-12.60	3.54-12.60
B	14.96 max.	14.96 max.	18.50 max.	19.68 max.	20.47 max.
C	2.51	2.91	3.94	4.41	4.72
D	.90	.90	1.57	1.57	1.60
E	9.13	9.13	10.63	10.90	11.22
F	3.54-5.90	3.54-5.90	5.71-8.66	5.71-8.66	6.30-9.05
G	1.02	1.02	2.63	3.50	3.87
H	.75	.87	.96	1.30	1.60
Net Weight (lbs)	9	11	21	25	35

Standards - CE,  
ASME/ANSI B30.16



Dimensions and illustrations are for reference only and subject to change without notice.

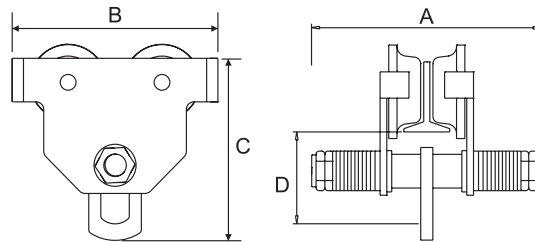


# PUSH BEAM TROLLEY



## Features

- Lightweight robust construction
- Fits most I, S, and W-Beams
- Durable baked enamel paint protection
- Precision ball bearing trolley wheels
- Anti-drop plate
- Stainless steel ID tag
- Individual test certificate and serial number

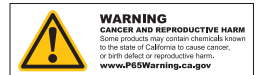


OZ3PBT

	OZ025PBT	OZ05PBT	OZ1PBT	OZ2PBT	OZ3PBT	OZ5PBT	OZ10PBT
Capacity (tons)	.25	.5	1	2	3	5	10
Adjustable Flange Width (in)	2.00-6.00	2.52-8.00	2.52-8.00	3.46-12.00	4.33-12.00	4.49-12.00	4.95-12.00
Max Flange Thickness (in)	0.82	1.14	1.50	1.18	1.36	1.44	1.97
Product Dimensions (in)	A	10.00	12.25	12.75	17.0	17.72	18.90
	B	7.68	8.35	9.45	11.53	13.78	15.04
	C	6.77	7.67	8.74	10.53	12.68	14.65
	D	4.02	4.33	4.90	5.79	6.83	7.87
Minimum Radius Curve (ft)	3.25	3.28	3.28	3.28	4.59	3.28	8.20
Net Weight (lbs)	7.7	12	23	40	66	100	192
Bail Pins	1	1	1	1	1	1	2



Standards - CE,  
ASME /ANSI B30.17



See wheel and bail dimensions on page 18

Dimensions and illustrations are for reference only and subject to change without notice.

