

ECWA INSTALLATION INSTRUCTIONS



TOOLS REQUIRED:

- TAPE
- PHILLIPS HEAD SCREWDRIVER
- ZIP TIES
- TWO (2) AA BATTERIES

General guidelines for installation of the ECWA Wireless Adapter to the OZ Electric Chain Hoist (OZ1000EC, OZ2000EC, or OZ4000EC).

NOTE: Excludes serial numbers starting with "V"

WARNING

The AC power cord provided with OZ1000EC, OZ2000EC, or OZ4000EC will not be utilized with the ECWA Wireless Adapter.

STEP 1



Tape up the three (3) sides of the cover of the OZ Electric Chain Hoist as shown.

STEP 2



Remove the four (4) screws as indicated by the blue arrows.

STEP 3



On the existing power cable connector on the body of OZ Electric Chain Hoist, flip retaining latch as shown.

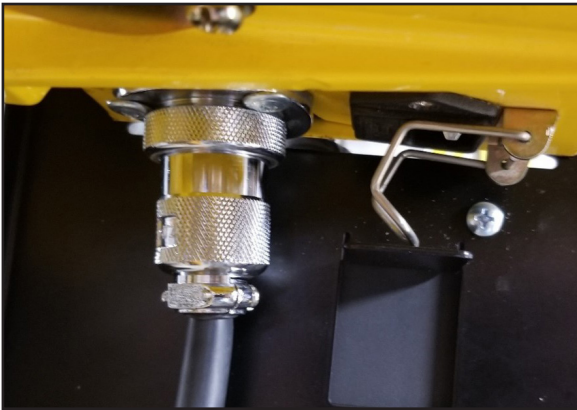


STEP 4



Align the OZ Wireless Adapter bracket to the four (4) holes in the cover of the OZ Electric Chain Hoist. Reinsert and tighten screws, taking care not to strip them.

STEP 5



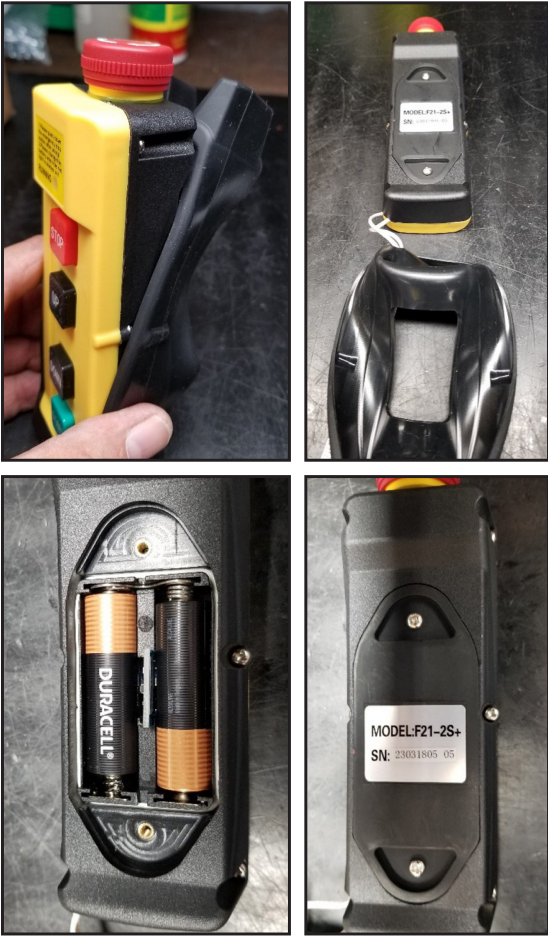
Insert and tighten the control plug to the connector on body as shown.

STEP 6



It is advised to tie-up the wiring with zip ties as shown to reduce the possibility of damage.

STEP 7



Carefully peel protective rubber sleeve back on the pendant remote, going over the top of the E-Stop.

Remove the two (2) screws on the battery compartment and insert the two (2) AA batteries, paying close attention to correct polarity.

Replace battery compartment cover and screws. Gently work the protective rubber sleeve back into position.

Disengage E-Stop and press the green START button to operate the hoist.

COMPLETE



Your OZ Electric Chain Hoist Wireless Adapter is now ready to use. Please follow the instructions in the operator's manual for further details. If you have any questions, please contact OZ Lifting Products.