

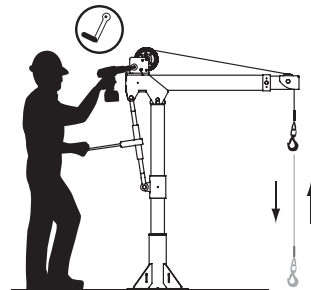
COMPOZITE® DAVIT CRANE

Individually tested and certified at 125%

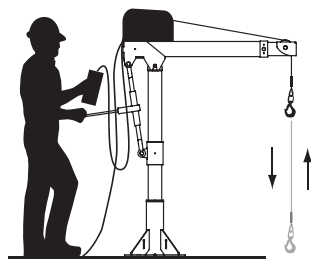
OZ1200DAV (PATENTED)



Options for faster lowering and raising



Detach winch handle for drill option



AC and DC power winches available
See page 25

Crane weighs only 83 lbs. As Shown

One person set up.
No tools required for installation.
Lightweight & Portable.



1200 lbs. Capacity Features

- Boom/Extension and Mast made of Advanced Composite Material
- Light weight, about 40% lighter than steel
- Corrosion resistant
- Metal components mil-spec zinc plated
- External handle helps rotate crane under load
- 4 position boom
- Ratchet screw jack adjusts boom under load giving you infinite range of lift
- 360 degree rotation of crane on sleeve bearing
- No tools required for installation. One person setup.
- DIN-Rated hand winch equipped standard with a load holding weatherproof Weston brake (Cable assembly sold separately)
- Hand winch accepts two different cable termination points: swaged ball fitting or bare end cable
- Quick connect winch handle with power drill adapter included
- Smart Latch technology at boom/mast connection
- Headache Ball (OZHB10) available and sold separately. See page 34
- Carrying case (OZRB1) available and sold separately

Weight

Weight (excluding winch)	Boom	Mast	Net
OZ1200DAV (lbs)	43	30	73

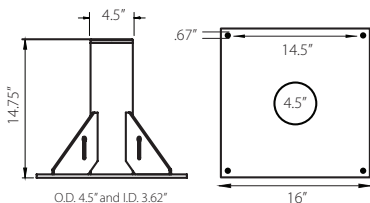
OZ1200DAV shown with optional OZPED1 Pedestal base, OZSS.25-55B wire rope assembly, and OZHB10 headache ball
Bases, cable assemblies and headache ball sold separately

WIRE/SYNTHETIC ROPE ASSEMBLIES
(sold separately) Custom length available.
See wire/synthetic rope assembly options on page 3

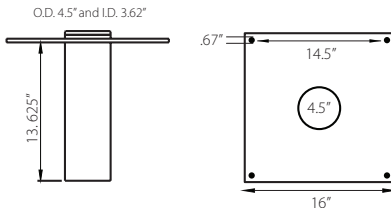
Manual winch: 3/16" - 80 ft max. lift length • 1/4" - 55ft max. lift length
AC/DC Electric Winch: 3/16" - 90 ft max. lift length • 1/4" - 45ft max. lift length

OZ1200DAV BASES (sold separately) Comes with mounting template.

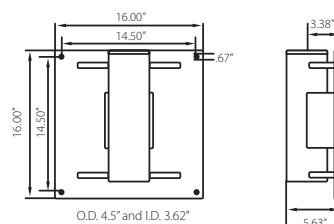
OZPED1



OZSOC1



OZWALL1

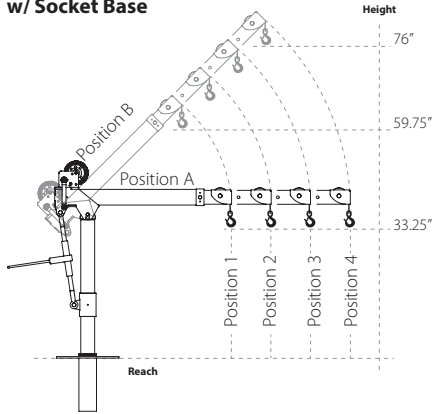


Dimensions and illustrations are for reference only and subject to change without notice.



OZ1200DAV DIMENSIONS Dimensions are for reference only and subject to change without notice.

w/ Socket Base



Boom Horizontal Position (A)

Boom Position 1: Reach 36"

Boom Position 2: Reach 46"

Boom Position 3: Reach 56"

Boom Position 4: Reach 66"

Boom 45° Position (B)

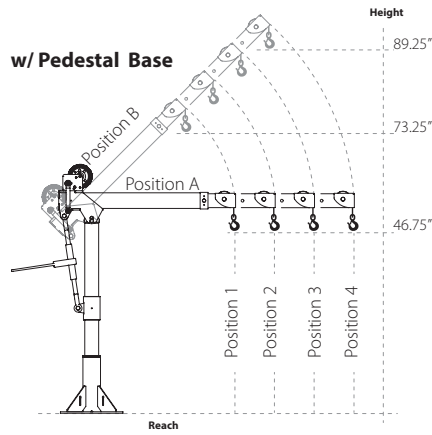
Boom Position 1: Reach 22"

Boom Position 2: Reach 29"

Boom Position 3: Reach 36"

Boom Position 4: Reach 43"

w/ Pedestal Base



Boom Horizontal Position (A)

Boom Position 1: Reach 36"

Boom Position 2: Reach 46"

Boom Position 3: Reach 56"

Boom Position 4: Reach 66"

Boom 45° Position (B)

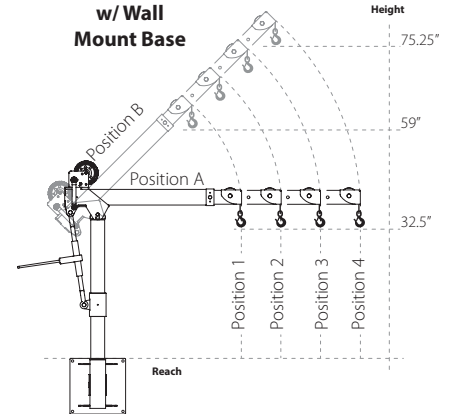
Boom Position 1: Reach 22"

Boom Position 2: Reach 29"

Boom Position 3: Reach 36"

Boom Position 4: Reach 43"

w/ Wall Mount Base



Boom Horizontal Position (A)

Boom Position 1: Reach 36"

Boom Position 2: Reach 46"

Boom Position 3: Reach 56"

Boom Position 4: Reach 66"

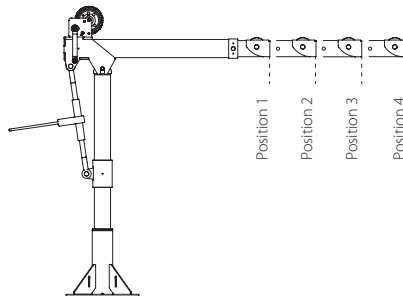
Boom 45° Position (B)

Boom Position 1: Reach 22"

Boom Position 2: Reach 29"

Boom Position 3: Reach 36"

Boom Position 4: Reach 43"



Load Ratings OZ1200DAV

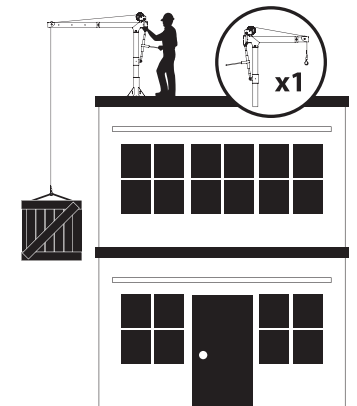
*Table based on 1/4 inch wire rope or 3/16" Urtex Synthetic Rope

Load Ratings	1st. Layer	Mid. Drum	Full Drum
Position 1 (lbs)	1200	875	550
Position 2 (lbs)	900	875	550
Position 3 (lbs)	700	700	550
Position 4 (lbs)	400	400	400

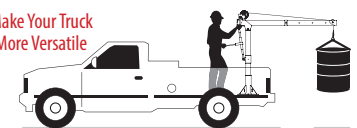
*Table based on 3/16" wire rope

Load Ratings	1st. Layer	Mid. Drum	Full Drum
Position 1 (lbs)	800	800	550
Position 2 (lbs)	800	800	550
Position 3 (lbs)	700	700	550
Position 4 (lbs)	400	400	400

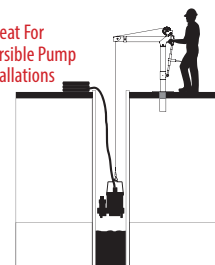
Designed for use in multiple workstations. Buy one crane and multiple bases.



Make Your Truck More Versatile



Great For Submersible Pump Installations



WHEEL BASE



For all OZ Lifting Products davit cranes up to 1200 lb. capacity

Features

- Industrial strength steel construction with a durable powder-coat finish
- Patented floor-anchoring system allows the davit to rotate while under load (when base is not anchored the davit must remain in a forward position when lifting)
- Features two fixed casters and two swivel casters with locking brakes to make moving the base and davit crane easy
- Forklift pockets (for transporting only)
- Made in USA

Davit crane sold separately

Patent Pending Floor-Anchoring System



OZWB

OZWB1

OZWB1-TP

OZWB2

OZWB2-TP

OZWB3

Wheel Base for all OZ davit cranes up to 1200 lb. capacity (Pedestal Base not included)

Wheel Base with Pedestal Base for use with OZ1200DAV

Wheel Base with Pedestal Base for use with OZ1000DAV, OZCF1200DAV

Wheel Base with Pedestal Base for use with OZXR500DAV, OZ500DAV, OZA500DAV

Wheel Base with Pedestal Base for use with OZTP1000DAV, OZXR1000DAV, OZA1000DAV

Wheel Base with Pedestal Base for use with OZTP500DAV

OZWB3 shown with OZXR500

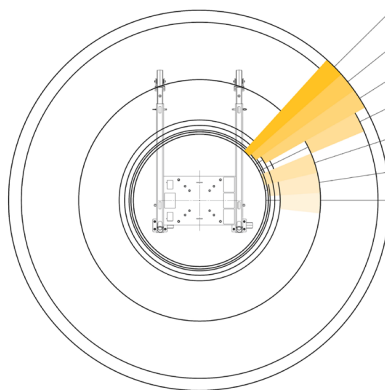
OZGAL.19-80B galvanized cable assembly

OZHB10 10lbs. headache ball

Davit crane, headache ball, and cable assemblies sold separately.
Locking collar included with applicable wheel base kits.

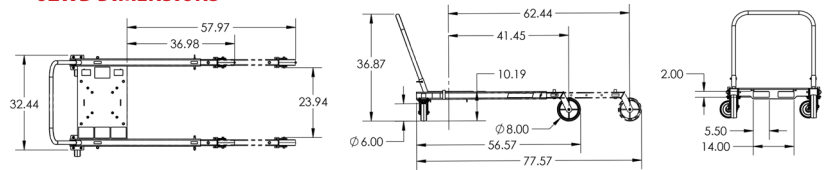
OZWB DAVIT CRANE REACH DIAMETER

Sections are representative of hook reach in 360-degrees

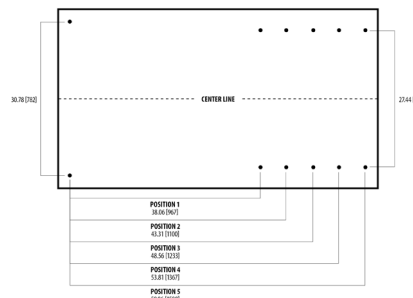


- OZ COMPOSITE**
MIN. 23.00 (1584) MAX. 66.00 (1677)
- OZ TELE-PRO 500**
MIN. 24.50 (1623) MAX. 66.00 (1677)
- OZ TELE-PRO 1200**
MIN. 26.00 (1641) MAX. 66.00 (1677)
- OZ XR SERIES**
MIN. 42.00 (1067) MAX. 42.00 (1575)
- OZ ALUM-LITE**
MIN. 24.50 (1584) MAX. 42.00 (1067)
- OZ COMPOSITE-ELITE**
MIN. 23.88 (1607) MAX. 42.00 (1067)
- OZ STEEL DAVIT**
MIN. 28.00 (1711) MAX. 42.00 (1067)

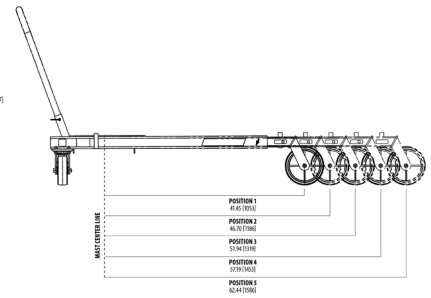
OZWB DIMENSIONS



ADJUSTABLE LEG EXTENSIONS



FLOOR-ANCHORING SYSTEM



Dimensions and illustrations are for reference only and subject to change without notice.



WIRE/SYNTHETIC ROPE ASSEMBLIES

Steel Wire Rope (For manual winch)		
OZGAL.19-80B	3/16" x 80'	Galvanized cable assembly
OZSS.19-80B	3/16" x 80'	Stainless steel cable assembly
OZGAL.25-55B	1/4" x 55'	Galvanized cable assembly
OZSS.25-55B	1/4" x 55'	Stainless steel cable assembly

Above cable assemblies come with swaged ball and swivel hook with latch.

Custom cable length available.

3/16" - 80 ft. max. length • 1/4" - 55 ft. max. length

Steel Wire Rope (For manual and power winch)		
OZGAL.19-90	3/16" x 90'	Galvanized cable assembly
OZSS.19-90	3/16" x 90'	Stainless Steel cable assembly
OZGAL.25-45	1/4" x 45'	Galvanized cable assembly
OZSS.25-45	1/4" x 45'	Stainless Steel cable assembly

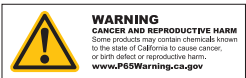
All cable assemblies come with a swivel hook with latch.

Custom cable length available.

3/16" - 90 ft. max. length • 1/4" - 45 ft. max. length

Synthetic Rope		
OZSR.19-15	3/16" x 15'	Ultrex Synthetic Rope
OZSR.19-50	3/16" x 50'	Ultrex Synthetic Rope
OZSR.19-90	3/16" x 90'	Ultrex Synthetic Rope
OZSR.25-50	1/4" x 50'	Ultrex Synthetic Rope
OZSR.25-75	1/4" x 75'	Ultrex Synthetic Rope
OZSR.31-45	5/16" x 45'	Ultrex Synthetic Rope

All synthetic rope assemblies come with looped ends and pre-installed swivel hook with latch





HEADACHE BALL

OZHB10

Keeps your wire rope tensioned even when lowering the hook with no load. Compatible with 3/16" and 1/4" wire rope assemblies. Headache balls sold separately from all davit cranes and wire rope assemblies.



DAVIT CRANE COVER

OZDAV-C1

Protect your davit crane from the elements with this waterproof cover. Compatible with all OZ Lifting Products davit cranes 1200 lbs. capacity or less excluding the XR series.



DAVIT CRANE ROLLER BAG

OZRB1

Store and transport your davit crane in this davit crane roller bag. Fits OZ Lifting Products davit crane models OZ500DAV, OZ1000DAV, OZ1200DAV, OZCF1200DAV, OZA500DAV, & OZA1000DAV.

