

COMPOZITE ELITE® DAVIT CRANE

Individually tested and certified at 125% W.L.L

OZCF1200DAV



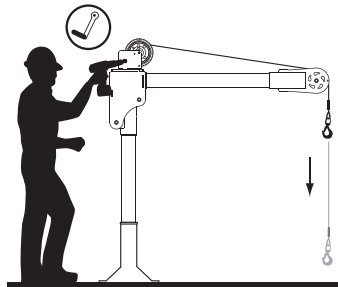
1200 lbs. Capacity

Features

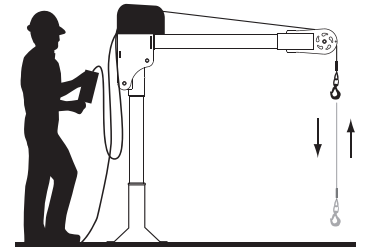
- Carbon fiber / High-strength aluminum construction
- Corrosion Resistant Finish
- Truly Portable Design
- One-Person Assembly (No Tools Needed)
- Manual Din rated CE winch with brake (Includes power drill adaptor)
- Synthetic Rope Assembly Available
- Headache Ball (OZHB10) available and sold separately
- Carrying case (OZRB1) available and sold separately

WIRE/SYNTHETIC ROPE ASSEMBLIES
(sold separately) Custom length available.

Options for faster lowering and raising



Manual winch w/drill drive adaptor



AC and DC power winches available
See page 25

Weight

Weight (excluding winch)	Boom	Mast	Net
OZCF1200DAV (lbs)	18	13	31

Load Ratings (lbs.)

Based on 1/4" wire or 3/16 synthetic rope

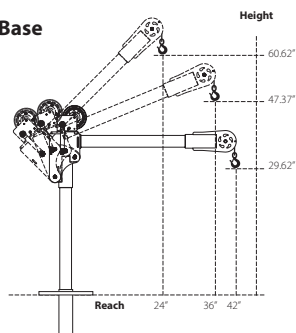
	1st. Layer	Mid. Drum	Full Drum
Position 1 (0°)	500	500	500
Position 2 (+22.5°)	700	700	550
Position 3 (+45°)	1200	875	55

OZ1000DAV shown with optional
OZPED2 Pedestal base and
OZGAL.25-55B wire rope assembly
Bases and cable assemblies sold separately

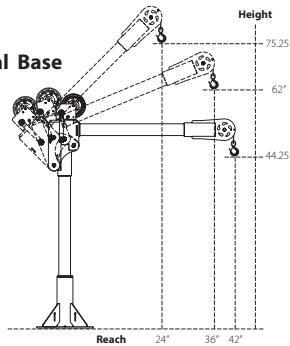
Manual winch: 3/16" - 80 ft max. lift length • 1/4" - 55ft max. lift length
AC/DC Electric Winch: 3/16" - 90 ft max. lift length • 1/4" - 45ft max. lift length
See wire & synthetic rope assembly options on the next page

OZCF1200DAV DIMENSIONS

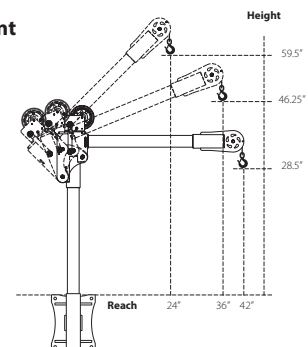
w/ Socket Base



w/ Pedestal Base

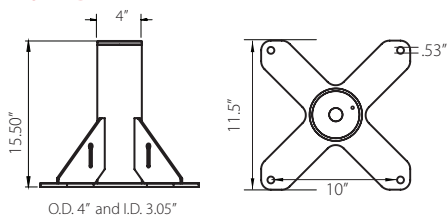


w/ Wall Mount

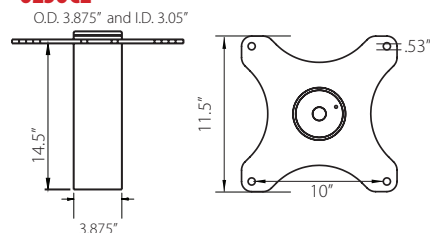


OZCF1200DAV BASES (sold separately) Comes with mounting template.

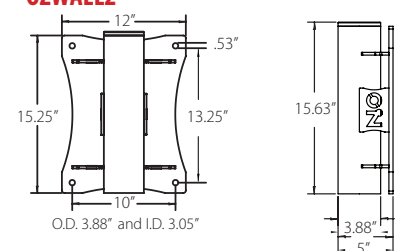
OZPED2



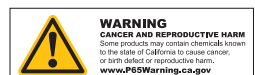
OZS0C2



OZWALL2



Dimensions and illustrations are for reference only and subject to change without notice.



WHEEL BASE



For all OZ Lifting Products davit cranes up to 1200 lb. capacity

Features

- Industrial strength steel construction with a durable powder-coat finish
- Patented floor-anchoring system allows the davit to rotate while under load (when base is not anchored the davit must remain in a forward position when lifting)
- Features two fixed casters and two swivel casters with locking brakes to make moving the base and davit crane easy
- Forklift pockets (for transporting only)
- Made in USA

Davit crane sold separately

Patent Pending Floor-Anchoring System



OZWB

OZWB1

OZWB1-TP

OZWB2

OZWB2-TP

OZWB3

- Wheel Base for all OZ davit cranes up to 1200 lb. capacity (Pedestal Base not included)
- Wheel Base with Pedestal Base for use with OZ1200DAV
- Wheel Base with Pedestal Base for use with OZ1000DAV, OZCF1200DAV
- Wheel Base with Pedestal Base for use with OZXR500DAV, OZ500DAV, OZA500DAV
- Wheel Base with Pedestal Base for use with OZTP1000DAV, OZXR1000DAV, OZA1000DAV
- Wheel Base with Pedestal Base for use with OZTP500DAV

OZWB3 shown with OZXR500

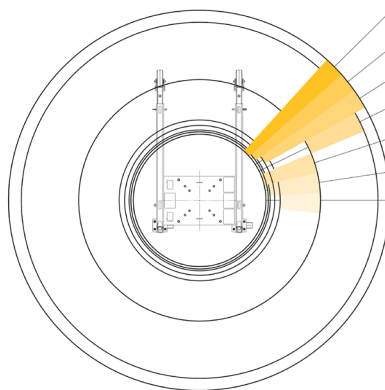
OZGAL.19-80B galvanized cable assembly

OZHB10 10lbs. headache ball

Davit crane, headache ball, and cable assemblies sold separately.
Locking collar included with applicable wheel base kits.

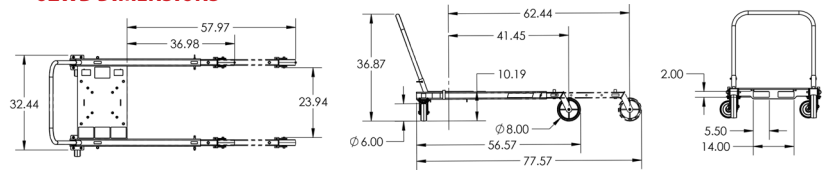
OZWB DAVIT CRANE REACH DIAMETER

Sections are representative of hook reach in 360-degrees

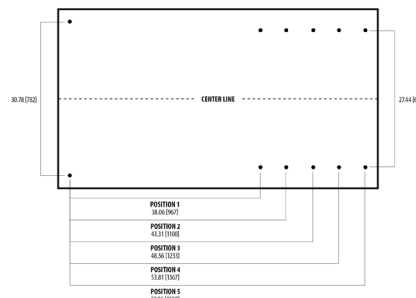


- OZ COMPOSITE**
MIN. 23.00 (1584) MAX. 66.00 (1677)
- OZ TELE-PRO 500**
MIN. 24.50 (1623) MAX. 66.00 (1677)
- OZ TELE-PRO 1200**
MIN. 26.00 (1641) MAX. 66.00 (1677)
- OZ XR SERIES**
MIN. 42.00 (1067) MAX. 42.00 (1575)
- OZ ALUM-LITE**
MIN. 24.50 (1584) MAX. 42.00 (1067)
- OZ COMPOSITE-ELITE**
MIN. 23.88 (1607) MAX. 42.00 (1067)
- OZ STEEL DAVIT**
MIN. 28.00 (1711) MAX. 42.00 (1067)

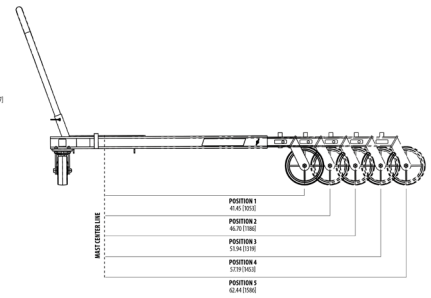
OZWB DIMENSIONS



ADJUSTABLE LEG EXTENSIONS



FLOOR-ANCHORING SYSTEM



Dimensions and illustrations are for reference only and subject to change without notice.



WIRE/SYNTHETIC ROPE ASSEMBLIES

Steel Wire Rope (For manual winch)		
OZGAL.19-80B	3/16" x 80'	Galvanized cable assembly
OZSS.19-80B	3/16" x 80'	Stainless steel cable assembly
OZGAL.25-55B	1/4" x 55'	Galvanized cable assembly
OZSS.25-55B	1/4" x 55'	Stainless steel cable assembly

Above cable assemblies come with swaged ball and swivel hook with latch.

Custom cable length available.

3/16" - 80 ft. max. length • 1/4" - 55 ft. max. length

Steel Wire Rope (For manual and power winch)		
OZGAL.19-90	3/16" x 90'	Galvanized cable assembly
OZSS.19-90	3/16" x 90'	Stainless Steel cable assembly
OZGAL.25-45	1/4" x 45'	Galvanized cable assembly
OZSS.25-45	1/4" x 45'	Stainless Steel cable assembly

All cable assemblies come with a swivel hook with latch.

Custom cable length available.

3/16" - 90 ft. max. length • 1/4" - 45 ft. max. length

Synthetic Rope		
OZSR.19-15	3/16" x 15'	Ultrex Synthetic Rope
OZSR.19-50	3/16" x 50'	Ultrex Synthetic Rope
OZSR.19-90	3/16" x 90'	Ultrex Synthetic Rope
OZSR.25-50	1/4" x 50'	Ultrex Synthetic Rope
OZSR.25-75	1/4" x 75'	Ultrex Synthetic Rope
OZSR.31-45	5/16" x 45'	Ultrex Synthetic Rope

All synthetic rope assemblies come with looped ends and pre-installed swivel hook with latch





HEADACHE BALL

OZHB10

Keeps your wire rope tensioned even when lowering the hook with no load. Compatible with 3/16" and 1/4" wire rope assemblies. Headache balls sold separately from all davit cranes and wire rope assemblies.



DAVIT CRANE COVER

OZDAV-C1

Protect your davit crane from the elements with this waterproof cover. Compatible with all OZ Lifting Products davit cranes 1200 lbs. capacity or less excluding the XR series.



DAVIT CRANE ROLLER BAG

OZRB1

Store and transport your davit crane in this davit crane roller bag. Fits OZ Lifting Products davit crane models OZ500DAV, OZ1000DAV, OZ1200DAV, OZCF1200DAV, OZA500DAV, & OZA1000DAV.

