

TELE-PRO® DAVIT CRANE

Individually tested and certified at 125% W.L.L

OZTP500DAV, OZTP1200DAV, OZTP2500DAV

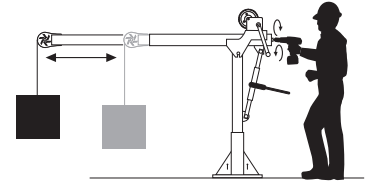
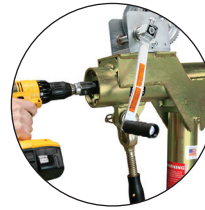
[PATENTED]



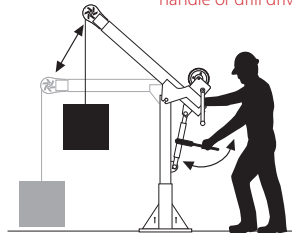
**500 lbs., 1200 lbs.
and 2500 lbs. Capacity**

Features

- Telescoping boom adjustment while under load
- Ratchet screw jack adjusts boom under load
- 360 degree rotation of crane on sleeve bearing
- DIN-Rated hand winch equipped standard with a load holding weatherproof Weston brake
- Quick connect winch handle with power drill adapter included
- Smart Latch technology at boom/mast connection
- Corrosion resistant zinc plated finish
- Headache Ball (OZHB10) available and sold separately
- Carrying case (OZRB1) available and sold separately (excludes TP2500)



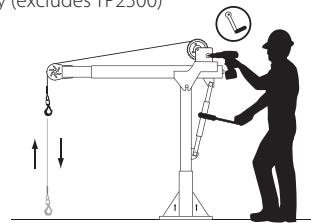
Telescoping boom can be adjusted using the winch handle or drill drive adapter



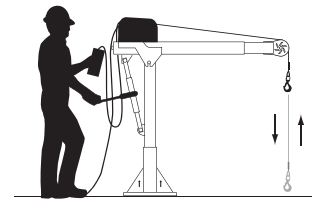
Ratchet screw jack adjusts boom under load

Weight

Weight (excluding winch)	Boom	Mast	Net
OZTP500DAV (lbs)	88	23	111
OZTP1200DAV (lbs)	102	36	138
OZTP2500DAV (lbs)	288	62	350



Detach winch handle for drill option



AC and DC power winches available
See page 25

OZTP1200DAV shown with optional
OZPED1-TP pedestal base and
OZGAL.25-55B wire rope assembly
Bases and cable assemblies sold separately

WIRE/SYNTHETIC ROPE ASSEMBLIES (sold separately)

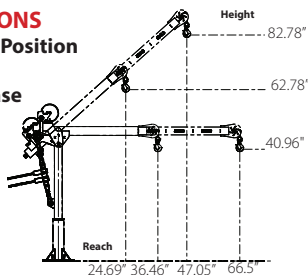
All cable assemblies come with swaged ball and swivel hook with latch. Custom cable length available.

Manual winch: 3/16" - 80 ft max. lift length • 1/4" - 55ft max. lift length
AC/DC Electric Winch: 3/16" - 90 ft max. lift length • 1/4" - 45ft max. lift length
See wire & synthetic rope assemblies on page 3

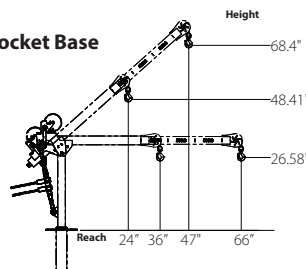
OZTP500DAV DIMENSIONS

Horizontal and 45° Boom Position

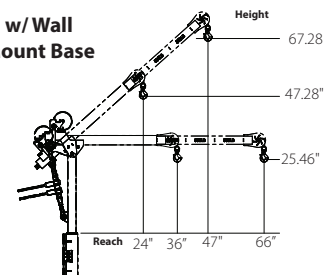
w/ Pedestal Base



w/ Socket Base

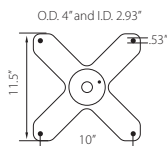
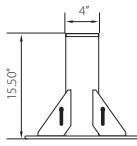


w/ Wall Mount Base

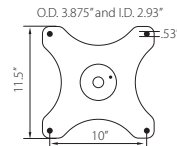
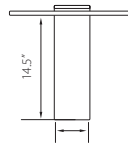


OZTP500DAV BASES (sold separately) Comes with mounting template.

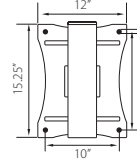
OZPED2-TP



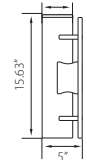
OZSOC2-TP



OZWALL2-TP



O.D. 3.88" and I.D. 2.93"



OZTP500DAV LOAD RATINGS – Horizontal Boom Angle

– Based on 3/16 inch wire or Ultrtex synthetic rope

Load Ratings (lbs.)	1st. Layer	Mid Drum	Full Drum
Boom Position 1 at 36°	500 lbs.	500 lbs.	500 lbs.
Boom Position 2 at 46°	430 lbs.	430 lbs.	430 lbs.
Boom Position 3 at 56°	350 lbs.	350 lbs.	350 lbs.
Boom Position 4 at 66°	300 lbs.	300 lbs.	300 lbs.

OZTP500DAV LOAD RATINGS – 45° Boom Angle

– Based on 3/16 inch wire or Ultrtex synthetic rope

Load Ratings (lbs.)	1st. Layer	Mid Drum	Full Drum
Boom Position 1 at 23°	500 lbs.	500 lbs.	500 lbs.
Boom Position 2 at 30°	500 lbs.	500 lbs.	500 lbs.
Boom Position 3 at 37°	500 lbs.	500 lbs.	500 lbs.
Boom Position 4 at 44°	450 lbs.	450 lbs.	450 lbs.

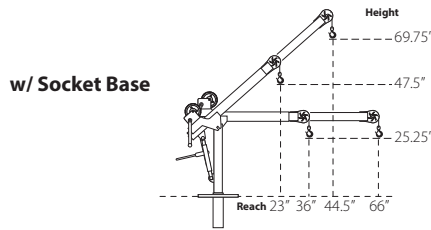
Load ratings shown are based on a manual winch. Load ratings will vary depending on wire or synthetic rope length and diameter. Dimensions and illustrations are for reference only and subject to change without notice.



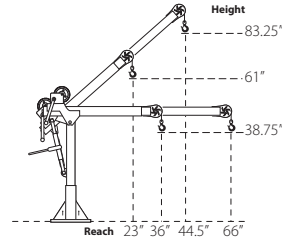
WARNING
CANCER AND REPRODUCTIVE HARM
Some products may contain chemicals known to the state of California to cause cancer, or birth defect or reproductive harm.
www.P65Warning.ca.gov

OZTP1200DAV DIMENSIONS

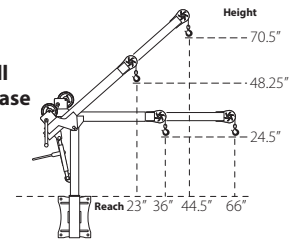
Horizontal and 45° Boom Position



w/ Pedestal Base

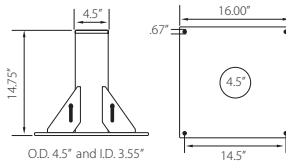


w/ Wall Mount Base

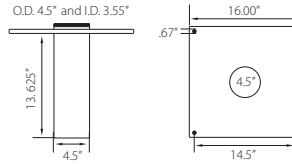


OZTP1200DAV BASES (sold separately) Comes with mounting template.

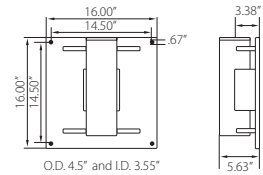
OZPED1-TP



OZSOC1-TP



OZWALL1-TP



OZTP1200DAV LOAD RATINGS – Horizontal Boom Angle

– Based on 3/16 inch wire rope

Load Ratings (lbs.)	1st. Layer	Mid Drum	Full Drum
Boom Position 1 at 36"	800 lbs.	800 lbs.	550 lbs.
Boom Position 2 at 46"	800 lbs.	800 lbs.	550 lbs.
Boom Position 3 at 56"	750 lbs.	750 lbs.	550 lbs.
Boom Position 4 at 66"	650 lbs.	650 lbs.	550 lbs.

OZTP1200DAV LOAD RATINGS – Horizontal Boom Angle

– Based on 1/4 inch wire rope or 3/16 inch Ultrax synthetic rope

Load Ratings (lbs.)	1st. Layer	Mid Drum	Full Drum
Boom Position 1 at 36"	1200 lbs.	875 lbs.	550 lbs.
Boom Position 2 at 46"	900 lbs.	875 lbs.	550 lbs.
Boom Position 3 at 56"	750 lbs.	750 lbs.	550 lbs.
Boom Position 4 at 66"	650 lbs.	650 lbs.	550 lbs.

OZTP1200DAV LOAD RATINGS – 45° Boom Angle

– Based on 3/16 inch wire rope

Load Ratings (lbs.)	1st. Layer	Mid Drum	Full Drum
Boom Position 1 at 23"	800 lbs.	800 lbs.	550 lbs.
Boom Position 2 at 30.25"	800 lbs.	800 lbs.	550 lbs.
Boom Position 3 at 37.25"	800 lbs.	800 lbs.	550 lbs.
Boom Position 4 at 44.5"	800 lbs.	800 lbs.	550 lbs.

OZTP1200DAV LOAD RATINGS – 45° Boom Angle

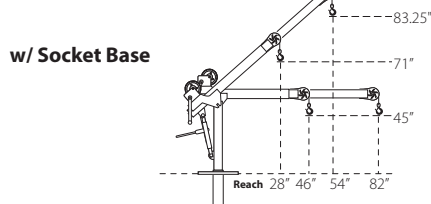
– Based on 1/4 inch wire rope or 3/16 inch Ultrax synthetic rope

Load Ratings (lbs.)	1st. Layer	Mid Drum	Full Drum
Boom Position 1 at 23"	1200 lbs.	875 lbs.	550 lbs.
Boom Position 2 at 30.25"	1200 lbs.	875 lbs.	550 lbs.
Boom Position 3 at 37.25"	1100 lbs.	875 lbs.	550 lbs.
Boom Position 4 at 44.5"	950 lbs.	875 lbs.	550 lbs.

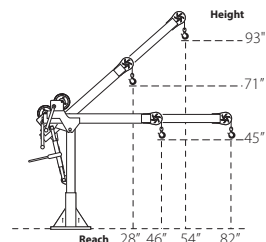
Load ratings shown are based on a manual winch • See page 25 for electric winch load ratings.

OZTP2500DAV DIMENSIONS

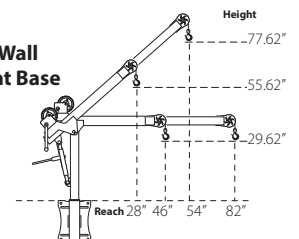
Horizontal and 45° Boom Position



w/ Pedestal Base

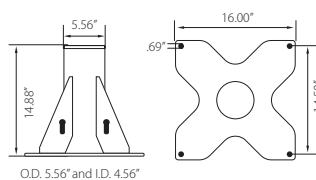


w/ Wall Mount Base

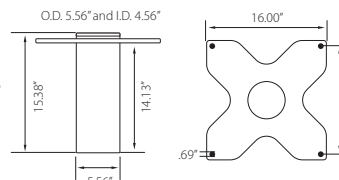


OZTP2500DAV BASES (sold separately) Comes with mounting template.

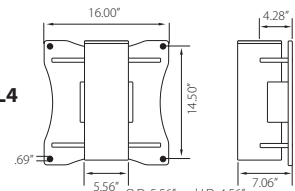
OZPED4



OZSOC4



OZWALL4



OZTP2500DAV LOAD RATINGS – Horizontal Boom Angle

– Based on 1/4 inch Ultrax synthetic rope

Load Ratings (lbs.)	1st. Layer	Mid Drum	Full Drum
Boom Position 1 at 46"	2000 lbs.	2000 lbs.	1550 lbs.
Boom Position 2 at 58"	1900 lbs.	1900 lbs.	1550 lbs.
Boom Position 3 at 70"	1600 lbs.	1600 lbs.	1550 lbs.
Boom Position 4 at 82"	1300 lbs.	1300 lbs.	1300 lbs.

OZTP2500DAV LOAD RATINGS – Horizontal Boom Angle

– Based on 3/8 inch Ultrax synthetic rope

Load Ratings (lbs.)	1st. Layer	Mid Drum	Full Drum
Boom Position 1 at 46"	2500 lbs.	2015 lbs.	1550 lbs.
Boom Position 2 at 58"	1900 lbs.	1900 lbs.	1550 lbs.
Boom Position 3 at 70"	1600 lbs.	1600 lbs.	1550 lbs.
Boom Position 4 at 82"	1300 lbs.	1300 lbs.	1300 lbs.

OZTP2500DAV LOAD RATINGS – 45° Boom Angle

– Based on 1/4 inch Ultrax synthetic rope

Load Ratings (lbs.)	1st. Layer	Mid Drum	Full Drum
Boom Position 1 at 28"	2000 lbs.	2000 lbs.	1550 lbs.
Boom Position 2 at 37"	2000 lbs.	2000 lbs.	1550 lbs.
Boom Position 3 at 45.5"	2000 lbs.	2000 lbs.	1550 lbs.
Boom Position 4 at 54"	2000 lbs.	2000 lbs.	1550 lbs.

OZTP2500DAV LOAD RATINGS – 45° Boom Angle

– Based on 3/8 inch Ultrax synthetic rope

Load Ratings (lbs.)	1st. Layer	Mid Drum	Full Drum
Boom Position 1 at 28"	2500 lbs.	2015 lbs.	1550 lbs.
Boom Position 2 at 37"	2500 lbs.	2015 lbs.	1550 lbs.
Boom Position 3 at 45.5"	2500 lbs.	2015 lbs.	1550 lbs.
Boom Position 4 at 54"	2000 lbs.	2000 lbs.	1550 lbs.

Load ratings shown are based on a manual winch • Load ratings will vary depending on wire or synthetic rope length and diameter.
Dimensions and illustrations are for reference only and subject to change without notice.

WHEEL BASE



For all OZ Lifting Products davit cranes up to 1200 lb. capacity

Features

- Industrial strength steel construction with a durable powder-coat finish
- Patented floor-anchoring system allows the davit to rotate while under load (when base is not anchored the davit must remain in a forward position when lifting)
- Features two fixed casters and two swivel casters with locking brakes to make moving the base and davit crane easy
- Forklift pockets (for transporting only)
- Made in USA

Davit crane sold separately

Patent Pending Floor-Anchoring System



OZWB

OZWB1

OZWB1-TP

OZWB2

OZWB2-TP

OZWB3

- Wheel Base for all OZ davit cranes up to 1200 lb. capacity (Pedestal Base not included)
- Wheel Base with Pedestal Base for use with OZ1200DAV
- Wheel Base with Pedestal Base for use with OZ1000DAV, OZCF1200DAV
- Wheel Base with Pedestal Base for use with OZXR500DAV, OZ500DAV, OZA500DAV
- Wheel Base with Pedestal Base for use with OZTP1000DAV, OZXR1000DAV, OZA1000DAV
- Wheel Base with Pedestal Base for use with OZTP500DAV

OZWB3 shown with OZXR500

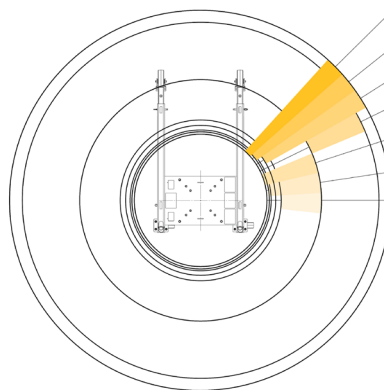
OZGAL.19-80B galvanized cable assembly

OZHB10 10lbs. headache ball

Davit crane, headache ball, and cable assemblies sold separately.
Locking collar included with applicable wheel base kits.

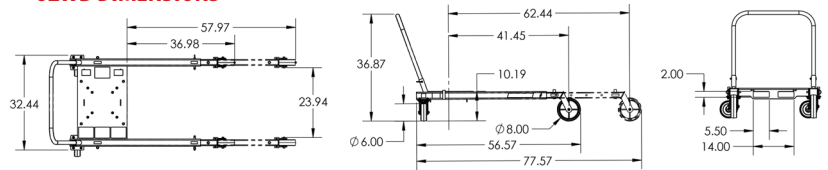
OZWB DAVIT CRANE REACH DIAMETER

Sections are representative of hook reach in 360-degrees

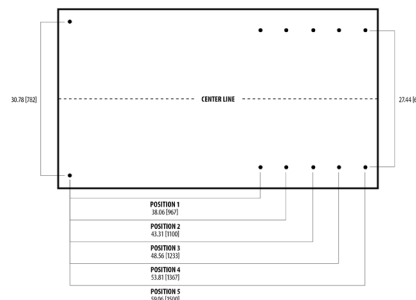


- OZ COMPOSITE**
MIN. 23.00 (1584) MAX. 66.00 (1677)
- OZ TELE-PRO 500**
MIN. 24.50 (1623) MAX. 66.00 (1677)
- OZ TELE-PRO 1200**
MIN. 26.00 (1641) MAX. 66.00 (1677)
- OZ XR SERIES**
MIN. 42.00 (1067) MAX. 62.00 (1575)
- OZ ALUM-LITE**
MIN. 24.50 (1584) MAX. 42.00 (1067)
- OZ COMPOSITE-ELITE**
MIN. 23.88 (1607) MAX. 42.00 (1067)
- OZ STEEL DAVIT**
MIN. 28.00 (1711) MAX. 42.00 (1067)

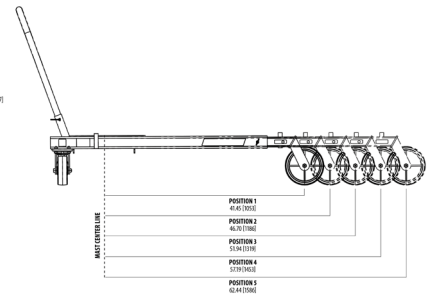
OZWB DIMENSIONS



ADJUSTABLE LEG EXTENSIONS



FLOOR-ANCHORING SYSTEM



Dimensions and illustrations are for reference only and subject to change without notice.



WIRE/SYNTHETIC ROPE ASSEMBLIES

Steel Wire Rope (For manual winch)		
OZGAL.19-80B	3/16" x 80'	Galvanized cable assembly
OZSS.19-80B	3/16" x 80'	Stainless steel cable assembly
OZGAL.25-55B	1/4" x 55'	Galvanized cable assembly
OZSS.25-55B	1/4" x 55'	Stainless steel cable assembly

Above cable assemblies come with swaged ball and swivel hook with latch.

Custom cable length available.

3/16" - 80 ft. max. length • 1/4" - 55 ft. max. length

Steel Wire Rope (For manual and power winch)		
OZGAL.19-90	3/16" x 90'	Galvanized cable assembly
OZSS.19-90	3/16" x 90'	Stainless Steel cable assembly
OZGAL.25-45	1/4" x 45'	Galvanized cable assembly
OZSS.25-45	1/4" x 45'	Stainless Steel cable assembly

All cable assemblies come with a swivel hook with latch.

Custom cable length available.

3/16" - 90 ft. max. length • 1/4" - 45 ft. max. length

Synthetic Rope		
OZSR.19-15	3/16" x 15'	Ultrex Synthetic Rope
OZSR.19-50	3/16" x 50'	Ultrex Synthetic Rope
OZSR.19-90	3/16" x 90'	Ultrex Synthetic Rope
OZSR.25-50	1/4" x 50'	Ultrex Synthetic Rope
OZSR.25-75	1/4" x 75'	Ultrex Synthetic Rope
OZSR.31-45	5/16" x 45'	Ultrex Synthetic Rope

All synthetic rope assemblies come with looped ends and pre-installed swivel hook with latch





HEADACHE BALL

OZHB10

Keeps your wire rope tensioned even when lowering the hook with no load. Compatible with 3/16" and 1/4" wire rope assemblies. Headache balls sold separately from all davit cranes and wire rope assemblies.



DAVIT CRANE COVER

OZDAV-C1

Protect your davit crane from the elements with this waterproof cover. Compatible with all OZ Lifting Products davit cranes 1200 lbs. capacity or less excluding the XR series.



DAVIT CRANE ROLLER BAG

OZRB1

Store and transport your davit crane in this davit crane roller bag. Fits OZ Lifting Products davit crane models OZ500DAV, OZ1000DAV, OZ1200DAV, OZCF1200DAV, OZA500DAV, & OZA1000DAV.

