

DZ LIFTING[®] PRODUCTS



DZ LIFTING COMPOZITE-ELITE

DZ LIFTING ALUMI-LITE

DZ LIFTING WHEEL BASE

DZ LIFTING TELE-PRO

DZ LIFTING XR SERIES

DZ LIFTING STEEL DAVIT

DZ LIFTING COMPOZITE

WHY OZ LIFTING PRODUCTS®?



Service

From the first phone call to service after the sale, we carefully manage all aspects of your order. Our standard product can be quoted immediately allowing us to get you the product you need, when you need it. Customer satisfaction is our number one priority. Our team is committed to providing you the service you deserve.



No Order Minimums

No required minimum quantity orders.



Quick Ship

Our quick ship program contains our most common items, many of which are used in the building and construction industries where quick turnaround solutions are required. In-stock items ship in 2-3 business days with same day shipping available by request and with an additional fee.



Made in the USA

We offer a full range of new and innovative lifting products designed and manufactured in the United States.



Tested in the USA

At OZ Lifting Products®, our customers expect products that have endured advanced testing and rigorous inspection to ensure many years of operation. Our quality control and testing is unmatched. Our products meet and exceed expectations in regards to safety, performance, durability and customer satisfaction. Our products adhere to the ASME, ANSI, AS, OSHA and CE standards keeping you and your equipment safe.



Test Certificate

A test certificate is included with each product and ensures the product has been load tested. An individual serial number provides complete traceability throughout the manufacturing process.



Overload Protected

Our overload protection is standard on all of our premium hoists and select electric series models. The overload protection is integral to the product and prevents the operator from overloading the hoist. The overload resets itself and the hoist can go right back into service. Every product featuring overload is tested at our facility in Minnesota by certified OZ technicians to guarantee product performance.



Custom Length of Lift

We offer custom lengths of lifts on all of our products. Standard or custom length, we have a solution.



Parts

Replacement parts are available for most OZ products. Please use our parts request form at www.ozliftingproducts.com/parts.



Patented



Trademark



Warranty

ALUMA-LITE® DAVIT CRANE

Individually tested and certified at 125% W.L.L

OZA500DAV, OZA1000DAV



Ultra
lightweight
& portable

**500 lbs. and
1,000 lbs. Capacity**

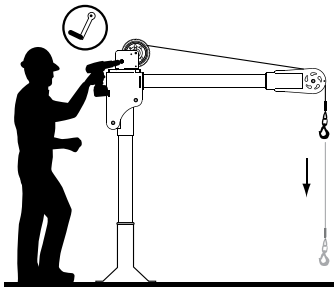
Features

- Lightweight aerospace grade aluminum construction
- 360 degree rotation
- 3 different boom height adjustments
- Durable powder coat finish
- Truly Portable Design
- One-Person Assembly (No Tools Needed)
- Manual Din rated CE winch with brake (Includes power drill adaptor)
- AC & DC winch options

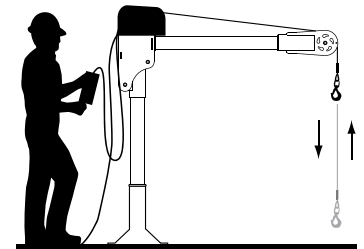
OZA500DAV shown with optional
OZPED3 Pedestal base and
OZGAL.19-50B galvanized wire rope assembly
and OZHB10 headache ball

Bases, cable assemblies and headache ball sold separately

Options for faster lowering and raising



Manual winch w/drill drive adapter



AC and DC power winches available
See page 25

Weight

Weight (excluding winch)	Boom	Mast	Net
OZA500DAV (lbs)	12	12	24
OZA1000DAV (lbs)	25	22	47

WIRE/SYNTHETIC ROPE ASSEMBLIES

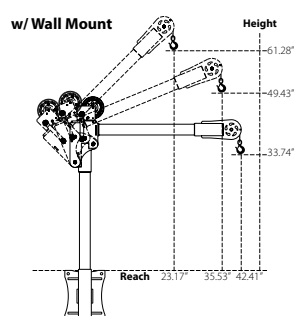
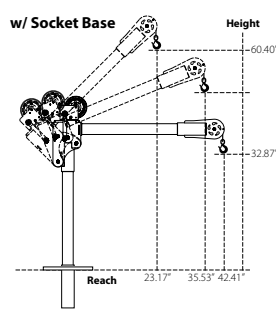
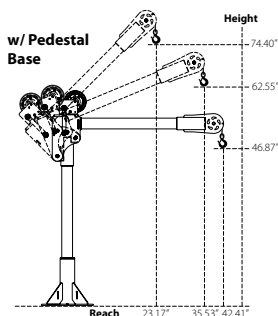
(sold separately) Custom length available.

Manual winch: 3/16" - 80 ft max. lift length

AC/DC Electric Winch: 3/16" - 90 ft max. lift length

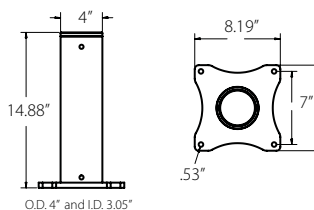
See wire & synthetic rope assembly options page 38

OZA500DAV DIMENSIONS

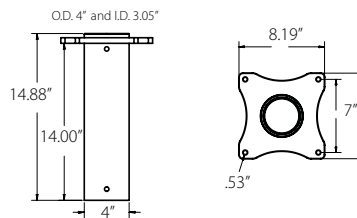


OZA500DAV BASES (sold separately) Comes with mounting template.

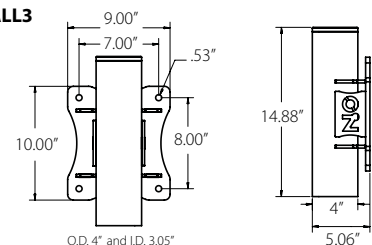
OZPED3



OZSOC3



OZWALL3

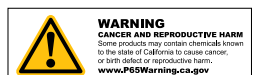


Dimensions and illustrations are for reference only and subject to change without notice.

OZA500DAV Load Ratings (lbs.)

Based on 3/16" wire rope

	1st. Layer	Mid. Drum	Full Drum
Position 1 (0°)	275	275	275
Position 2 (+22.5°)	330	330	330
Position 3 (+45°)	500	500	500





OZA1000DAV-ACW shown with optional
OZPED1-TP Pedestal base and
OZSR.19-50 synthetic rope assembly
and OZHB10 headache ball
Bases, cable assemblies and headache ball sold separately

WIRE/SYNTHETIC ROPE ASSEMBLIES

(sold separately) Custom length available.

Manual winch: 1/4" - 55ft max. lift length

AC/DC Electric Winch: 1/4" - 45ft max. lift length

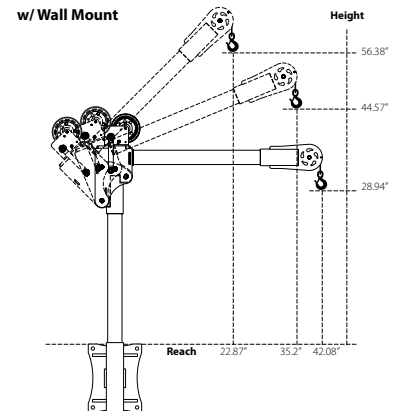
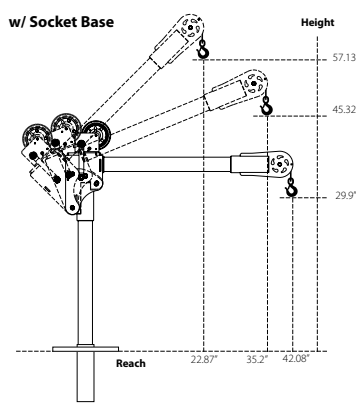
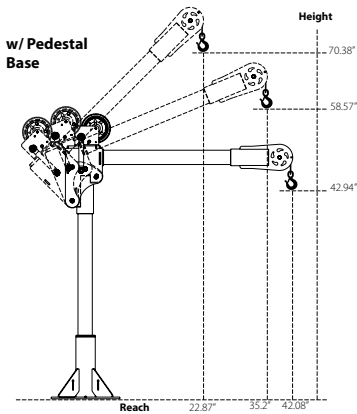
See wire & synthetic rope assembly options page 38

OZA1000DAV Load Ratings (lbs.)

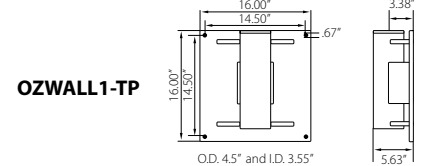
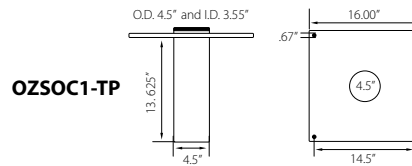
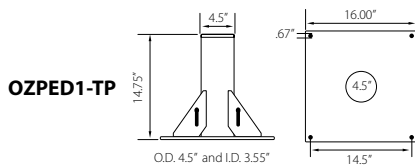
Based on 1/4" wire or 3/16" Ultrex synthetic rope

	1st. Layer	Mid. Drum	Full Drum
Position 1 (0°)	550	550	550
Position 2 (+22.5°)	650	650	550
Position 3 (+45°)	1000	875	550

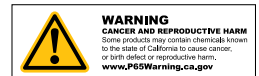
OZA1000DAV DIMENSIONS



OZA1000DAV BASES (sold separately) Comes with mounting template.



Dimensions and illustrations are for reference only and subject to change without notice.



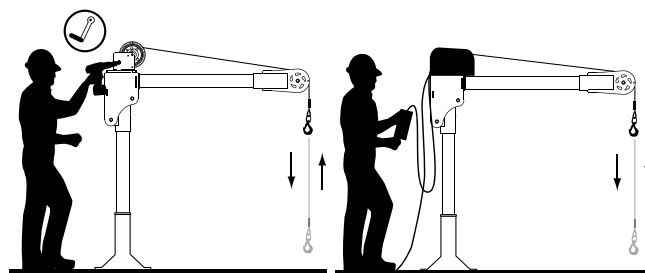
XR SERIES® DAVIT CRANE

Individually tested and certified at 125% W.L.L

OZXR500DAV, OZXR1000DAV



Options for faster lowering and raising



Manual winch w/drill drive adapter

AC and DC power winches available
See page 25

**500 lbs. and
1,000 lbs. Capacity**

Features

- Maximum 62-inch reach and 87-inch hook height (both models)
- Maintains maximum weight capacity in all positions
- 360 degree rotation
- 4 different boom height adjustments
- Manual Din rated CE winch with brake. Includes power drill drive adapter
- Durable steel construction with powder coat finish
- Manual Din rated CE winch with brake (Includes power drill adaptor)
- AC & DC winch options

Weight

Weight (excluding winch)	Boom	Mast	Net
OZXR500DAV (lbs)	26	26	57
OZXR1000DAV (lbs)	46	41	95

OZXR500DAV Load Ratings (lbs.)

Based on 3/16" wire rope

	1st. Layer	Mid. Drum	Full Drum
All positions	500	500	500

OZXR500DAV-ACW shown with optional
OZPED3 Pedestal base and
OZSR.19-50 synthetic rope assembly
and OZHB10 headache ball

Bases, cable assemblies and headache ball sold separately

WIRE/SYNTHETIC ROPE ASSEMBLIES

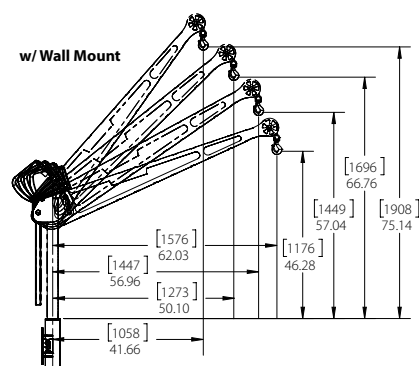
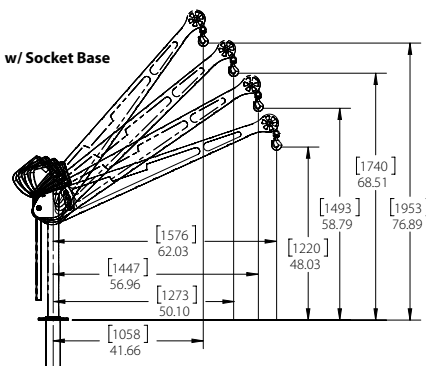
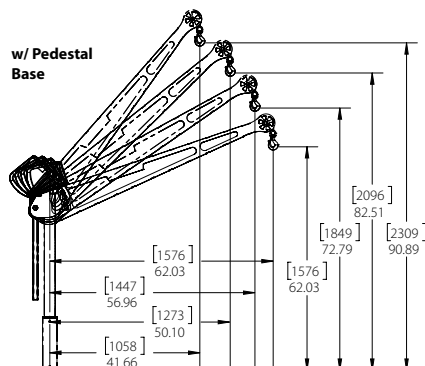
(sold separately) Custom length available.

Manual winch: 3/16" - 80 ft max. lift length

AC/DC Electric Winch: 3/16" - 90 ft max. lift length

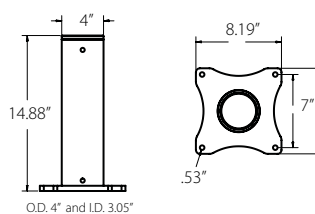
See wire & synthetic rope assembly options page 38

OZXR500DAV DIMENSIONS

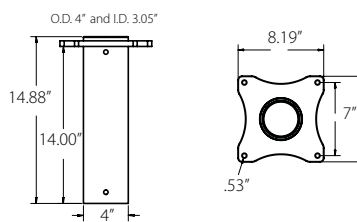


OZXR500DAV BASES (sold separately) Comes with mounting template.

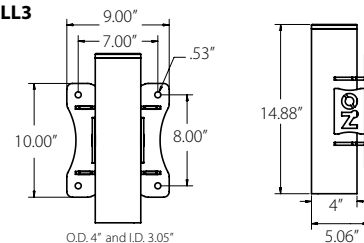
OZPED3



OZSOC3



OZWALL3



Dimensions and illustrations are for reference only and subject to change without notice.





OZXR1000DAV shown with optional
OZPED1-TP Pedestal base and
OZGAL.25-50B galvanized wire rope assembly
and OZHB10 headache ball
Bases, cable assemblies and headache ball sold separately



Handle comes standard
on both the XR 500 and
XR 1000

WIRE/SYNTHETIC ROPE ASSEMBLIES
(sold separately) Custom length available.



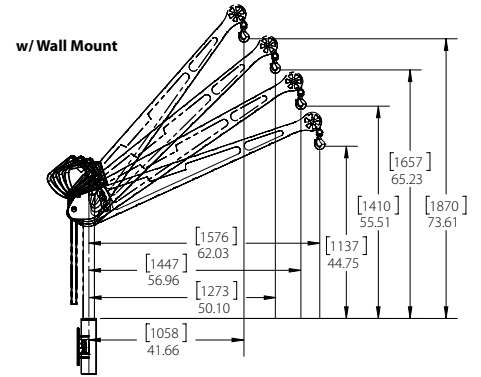
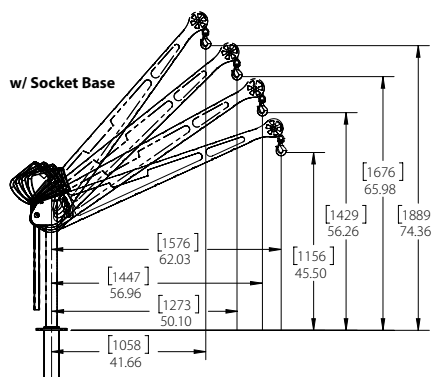
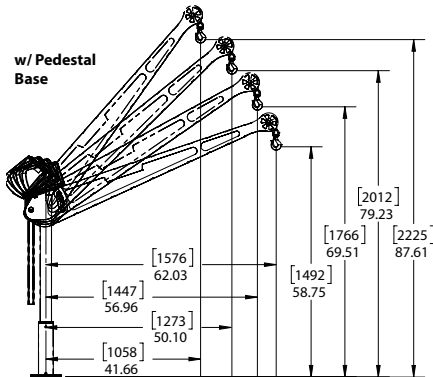
Manual winch: 1/4" - 55ft max. lift length
AC/DC Electric Winch: 1/4" - 45ft max. lift length
See wire & synthetic rope assembly options page 38

OZXR1000DAV Load Ratings (lbs.)

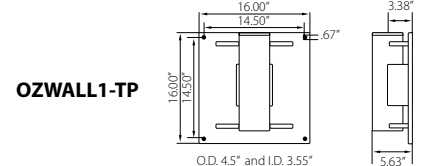
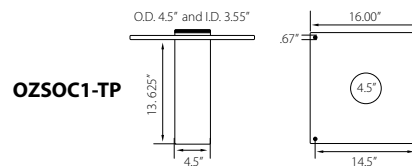
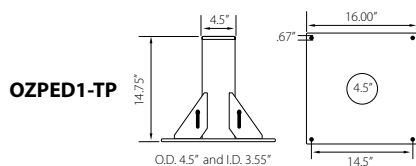
Based on 1/4" wire or 3/16" Ultrtex synthetic rope

	1st. Layer	Mid. Drum	Full Drum
Position 1 (0°)	550	550	550
Position 2 (+22.5°)	650	650	550
Position 3 (+45°)	1000	875	550

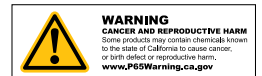
OZXR1000DAV DIMENSIONS



OZXR1000DAV BASES (sold separately) Comes with mounting template.



Dimensions and illustrations are for reference only and subject to change without notice.



TELE-PRO® DAVIT CRANE

Individually tested and certified at 125% W.L.L

OZTP500DAV, OZTP1200DAV, OZTP2500DAV

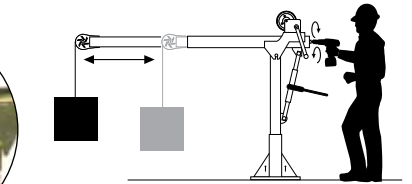
[PATENTED]



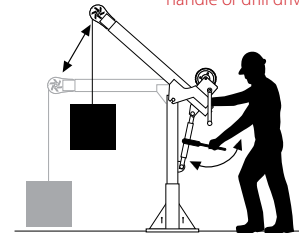
**500 lbs., 1200 lbs.
and 2500 lbs. Capacity**

Features

- Telescoping boom adjustment while under load
- Ratchet screw jack adjusts boom under load
- 360 degree rotation of crane on sleeve bearing
- DIN-Rated hand winch equipped standard with a load holding weatherproof Weston brake
- Quick connect winch handle with power drill adapter included
- Smart Latch technology at boom/mast connection
- Corrosion resistant zinc plated finish
- Headache Ball (OZHB10) available and sold separately
- Carrying case (OZRB1) available and sold separately (excludes TP2500)



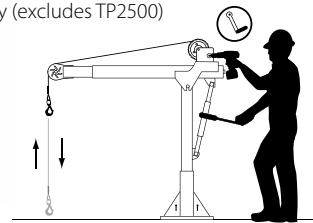
Telescoping boom can be adjusted using the winch handle or drill drive adapter



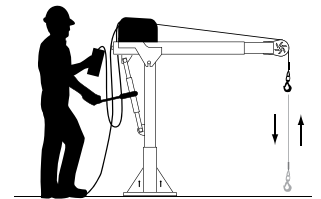
Ratchet screw jack adjusts boom under load

Weight

Weight (excluding winch)	Boom	Mast	Net
OZTP500DAV (lbs)	88	23	111
OZTP1200DAV (lbs)	102	36	138
OZTP2500DAV (lbs)	288	62	350



Detach winch handle for drill option



AC and DC power winches available
See page 25

OZTP1200DAV shown with optional
OZPED1-TP pedestal base and
OZGAL.25-55B wire rope assembly
Bases and cable assemblies sold separately

WIRE/SYNTHETIC ROPE ASSEMBLIES (sold separately)

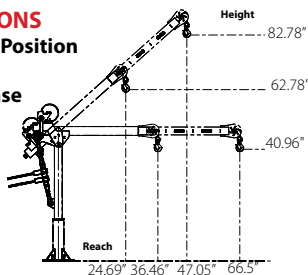
All cable assemblies come with swaged ball and swivel hook with latch. Custom cable length available.

Manual winch: 3/16" - 80 ft max. lift length • 1/4" - 55ft max. lift length
AC/DC Electric Winch: 3/16" - 90 ft max. lift length • 1/4" - 45ft max. lift length
See wire & synthetic rope assemblies page 38

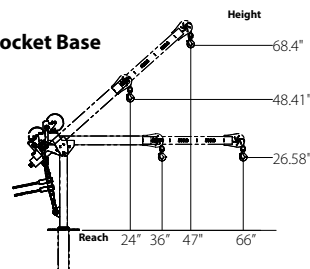
OZTP500DAV DIMENSIONS

Horizontal and 45° Boom Position

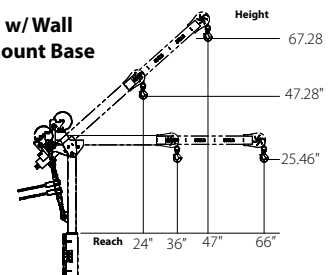
w/ Pedestal Base



w/ Socket Base

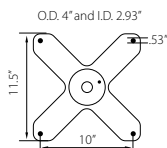
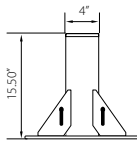


w/ Wall Mount Base

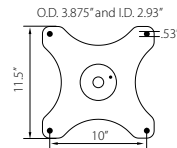
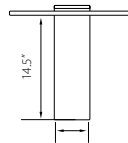


OZTP500DAV BASES (sold separately) Comes with mounting template.

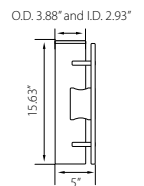
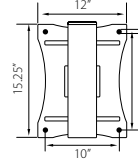
OZPED2-TP



OZSOC2-TP



OZWALL2-TP



OZTP500DAV LOAD RATINGS – Horizontal Boom Angle

– Based on 3/16 inch wire or Ultrtex synthetic rope

Load Ratings (lbs.)	1st. Layer	Mid Drum	Full Drum
Boom Position 1 at 36"	500 lbs.	500 lbs.	500 lbs.
Boom Position 2 at 46"	430 lbs.	430 lbs.	430 lbs.
Boom Position 3 at 56"	350 lbs.	350 lbs.	350 lbs.
Boom Position 4 at 66"	300 lbs.	300 lbs.	300 lbs.

OZTP500DAV LOAD RATINGS – 45° Boom Angle

– Based on 3/16 inch wire or Ultrtex synthetic rope

Load Ratings (lbs.)	1st. Layer	Mid Drum	Full Drum
Boom Position 1 at 23"	500 lbs.	500 lbs.	500 lbs.
Boom Position 2 at 30"	500 lbs.	500 lbs.	500 lbs.
Boom Position 3 at 37"	500 lbs.	500 lbs.	500 lbs.
Boom Position 4 at 44"	450 lbs.	450 lbs.	450 lbs.

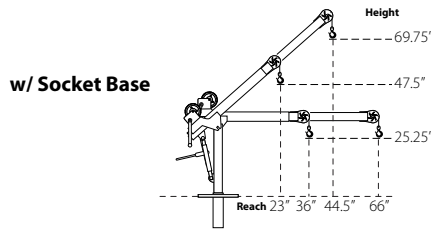
Load ratings shown are based on a manual winch. Load ratings will vary depending on wire or synthetic rope length and diameter. Dimensions and illustrations are for reference only and subject to change without notice.



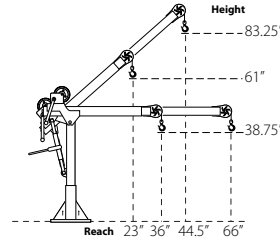
WARNING
CANCER AND REPRODUCTIVE HARM
Some products may contain chemicals known to the state of California to cause cancer, or birth defect or reproductive harm.
www.P65Warning.ca.gov

OZTP1200DAV DIMENSIONS

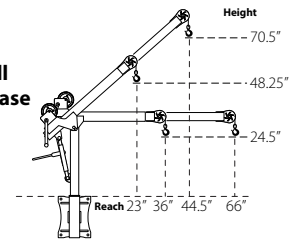
Horizontal and 45° Boom Position



w/ Pedestal Base

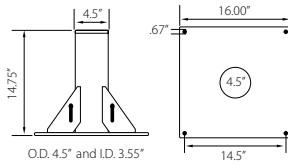


w/ Wall Mount Base

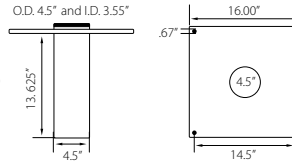


OZTP1200DAV BASES (sold separately) Comes with mounting template.

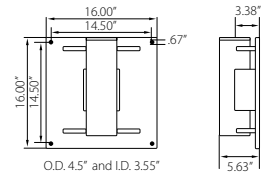
OZPED1-TP



OZSOC1-TP



OZWALL1-TP



OZTP1200DAV LOAD RATINGS – Horizontal Boom Angle

– Based on 3/16 inch wire rope

Load Ratings (lbs.)	1st. Layer	Mid Drum	Full Drum
Boom Position 1 at 36"	800 lbs.	800 lbs.	550 lbs.
Boom Position 2 at 46"	800 lbs.	800 lbs.	550 lbs.
Boom Position 3 at 56"	750 lbs.	750 lbs.	550 lbs.
Boom Position 4 at 66"	650 lbs.	650 lbs.	550 lbs.

OZTP1200DAV LOAD RATINGS – Horizontal Boom Angle

– Based on 1/4 inch wire rope or 3/16 inch Ultrtex synthetic rope

Load Ratings (lbs.)	1st. Layer	Mid Drum	Full Drum
Boom Position 1 at 36"	1200 lbs.	875 lbs.	550 lbs.
Boom Position 2 at 46"	900 lbs.	875 lbs.	550 lbs.
Boom Position 3 at 56"	750 lbs.	750 lbs.	550 lbs.
Boom Position 4 at 66"	650 lbs.	650 lbs.	550 lbs.

OZTP1200DAV LOAD RATINGS – 45° Boom Angle

– Based on 3/16 inch wire rope

Load Ratings (lbs.)	1st. Layer	Mid Drum	Full Drum
Boom Position 1 at 23"	800 lbs.	800 lbs.	550 lbs.
Boom Position 2 at 30.25"	800 lbs.	800 lbs.	550 lbs.
Boom Position 3 at 37.25"	800 lbs.	800 lbs.	550 lbs.
Boom Position 4 at 44.5"	800 lbs.	800 lbs.	550 lbs.

OZTP1200DAV LOAD RATINGS – 45° Boom Angle

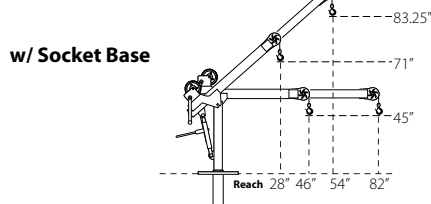
– Based on 1/4 inch wire rope or 3/16 inch Ultrtex synthetic rope

Load Ratings (lbs.)	1st. Layer	Mid Drum	Full Drum
Boom Position 1 at 23"	1200 lbs.	875 lbs.	550 lbs.
Boom Position 2 at 30.25"	1200 lbs.	875 lbs.	550 lbs.
Boom Position 3 at 37.25"	1100 lbs.	875 lbs.	550 lbs.
Boom Position 4 at 44.5"	950 lbs.	875 lbs.	550 lbs.

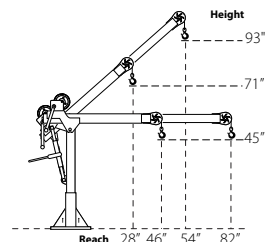
Load ratings shown are based on a manual winch • See page 25 for electric winch load ratings.

OZTP2500DAV DIMENSIONS

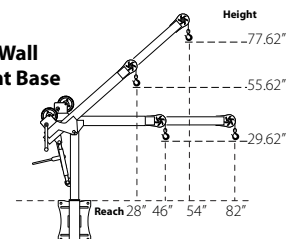
Horizontal and 45° Boom Position



w/ Pedestal Base

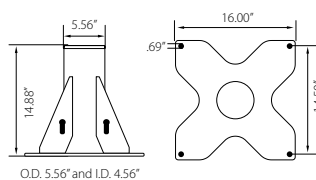


w/ Wall Mount Base

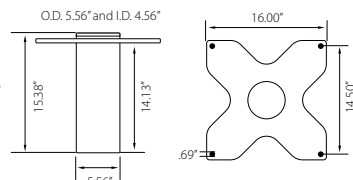


OZTP2500DAV BASES (sold separately) Comes with mounting template.

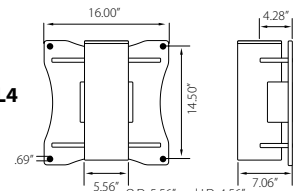
OZPED4



OZSOC4



OZWALL4



OZTP2500DAV LOAD RATINGS – Horizontal Boom Angle

– Based on 1/4 inch Ultrtex synthetic rope

Load Ratings (lbs.)	1st. Layer	Mid Drum	Full Drum
Boom Position 1 at 46"	2000 lbs.	2000 lbs.	1550 lbs.
Boom Position 2 at 58"	1900 lbs.	1900 lbs.	1550 lbs.
Boom Position 3 at 70"	1600 lbs.	1600 lbs.	1550 lbs.
Boom Position 4 at 82"	1300 lbs.	1300 lbs.	1300 lbs.

OZTP2500DAV LOAD RATINGS – Horizontal Boom Angle

– Based on 3/8 inch Ultrtex synthetic rope

Load Ratings (lbs.)	1st. Layer	Mid Drum	Full Drum
Boom Position 1 at 46"	2500 lbs.	2015 lbs.	1550 lbs.
Boom Position 2 at 58"	1900 lbs.	1900 lbs.	1550 lbs.
Boom Position 3 at 70"	1600 lbs.	1600 lbs.	1550 lbs.
Boom Position 4 at 82"	1300 lbs.	1300 lbs.	1300 lbs.

OZTP2500DAV LOAD RATINGS – 45° Boom Angle

– Based on 1/4 inch Ultrtex synthetic rope

Load Ratings (lbs.)	1st. Layer	Mid Drum	Full Drum
Boom Position 1 at 28"	2000 lbs.	2000 lbs.	1550 lbs.
Boom Position 2 at 37"	2000 lbs.	2000 lbs.	1550 lbs.
Boom Position 3 at 45.5"	2000 lbs.	2000 lbs.	1550 lbs.
Boom Position 4 at 54"	2000 lbs.	2000 lbs.	1550 lbs.

OZTP2500DAV LOAD RATINGS – 45° Boom Angle

– Based on 3/8 inch Ultrtex synthetic rope

Load Ratings (lbs.)	1st. Layer	Mid Drum	Full Drum
Boom Position 1 at 28"	2500 lbs.	2015 lbs.	1550 lbs.
Boom Position 2 at 37"	2500 lbs.	2015 lbs.	1550 lbs.
Boom Position 3 at 45.5"	2500 lbs.	2015 lbs.	1550 lbs.
Boom Position 4 at 54"	2000 lbs.	2000 lbs.	1550 lbs.

Load ratings shown are based on a manual winch • Load ratings will vary depending on wire or synthetic rope length and diameter.
Dimensions and illustrations are for reference only and subject to change without notice.

COMPOZITE® DAVIT CRANE

Individually tested and certified at 125%

OZ1200DAV (PATENTED)



1200 lbs. Capacity Features

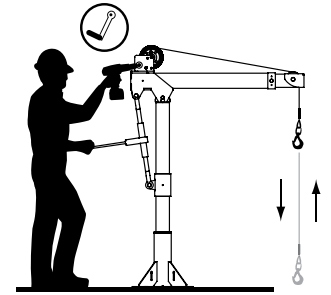
- **Boom/Extension and Mast made of Advanced Composite Material**
- Light weight, about 40% lighter than steel
- Corrosion resistant
- Metal components mil-spec zinc plated
- External handle helps rotate crane under load
- 4 position boom
- Ratchet screw jack adjusts boom under load giving you infinite range of lift
- 360 degree rotation of crane on sleeve bearing
- No tools required for installation. One person setup.
- DIN-Rated hand winch equipped standard with a load holding weatherproof Weston brake (Cable assembly sold separately)
- Hand winch accepts two different cable termination points: swaged ball fitting or bare end cable
- Quick connect winch handle with power drill adapter included
- Smart Latch technology at boom/mast connection
- Headache Ball (OZHB10) available and sold separately. See page 34
- Carrying case (OZRB1) available and sold separately



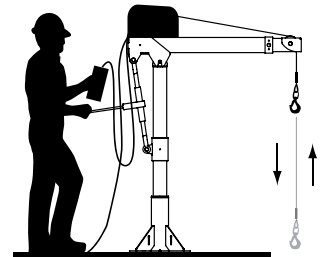
Crane weighs only 83 lbs. As Shown

One person set up. No tools required for installation. Lightweight & Portable.

Options for faster lowering and raising



Detach winch handle for drill option



AC and DC power winches available
See page 25

Weight

Weight (excluding winch)	Boom	Mast	Net
OZ1200DAV (lbs)	43	30	73

OZ1200DAV shown with optional OZPED1 Pedestal base, OZSS.25-55B wire rope assembly, and OZHB10 headache ball
Bases, cable assemblies and headache ball sold separately

WIRE/SYNTHETIC ROPE ASSEMBLIES

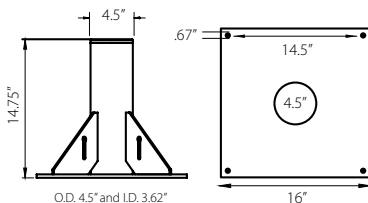
(sold separately) Custom length available.

See wire/synthetic rope assembly options page 38

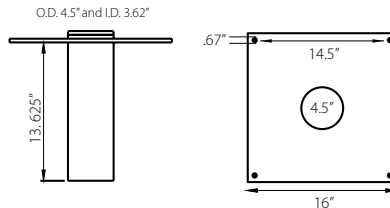
Manual winch: 3/16" - 80 ft max. lift length • 1/4" - 55ft max. lift length
AC/DC Electric Winch: 3/16" - 90 ft max. lift length • 1/4" - 45ft max. lift length

OZ1200DAV BASES (sold separately) Comes with mounting template.

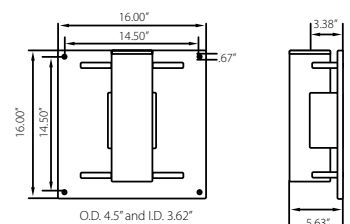
OZPED1



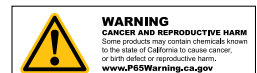
OZSOC1



OZWALL1

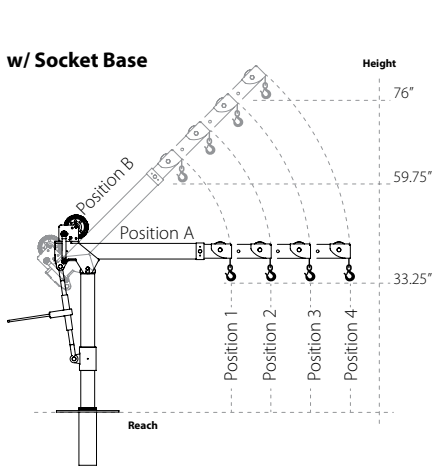


Dimensions and illustrations are for reference only and subject to change without notice.



OZ1200DAV DIMENSIONS Dimensions are for reference only and subject to change without notice.

w/ Socket Base



Boom Horizontal Position (A)

Boom Position 1: Reach 36"

Boom Position 2: Reach 46"

Boom Position 3: Reach 56"

Boom Position 4: Reach 66"

Boom 45° Position (B)

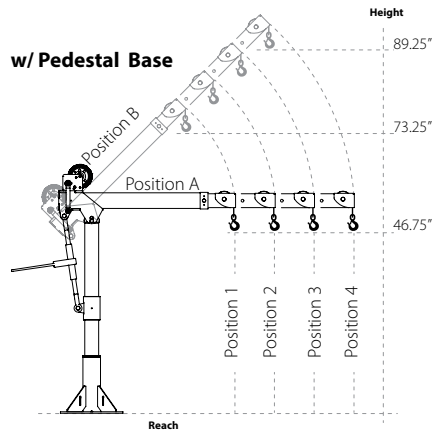
Boom Position 1: Reach 22"

Boom Position 2: Reach 29"

Boom Position 3: Reach 36"

Boom Position 4: Reach 43"

w/ Pedestal Base



Boom Horizontal Position (A)

Boom Position 1: Reach 36"

Boom Position 2: Reach 46"

Boom Position 3: Reach 56"

Boom Position 4: Reach 66"

Boom 45° Position (B)

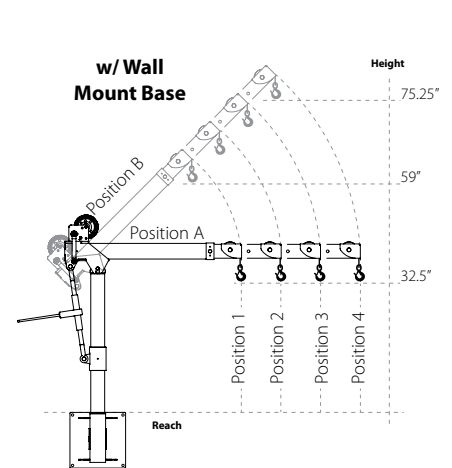
Boom Position 1: Reach 22"

Boom Position 2: Reach 29"

Boom Position 3: Reach 36"

Boom Position 4: Reach 43"

w/ Wall Mount Base



Boom Horizontal Position (A)

Boom Position 1: Reach 36"

Boom Position 2: Reach 46"

Boom Position 3: Reach 56"

Boom Position 4: Reach 66"

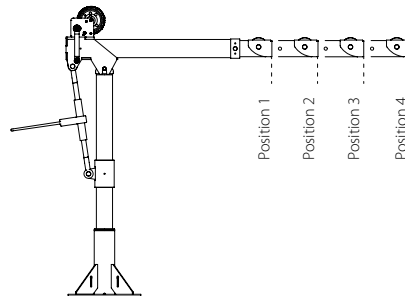
Boom 45° Position (B)

Boom Position 1: Reach 22"

Boom Position 2: Reach 29"

Boom Position 3: Reach 36"

Boom Position 4: Reach 43"



Load Ratings OZ1200DAV

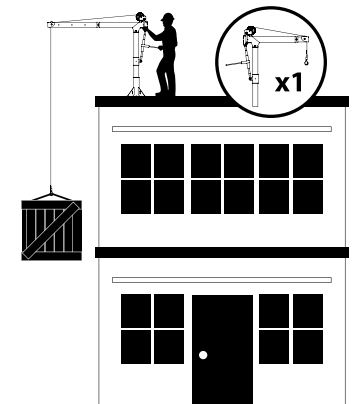
*Table based on 1/4 inch wire rope or 3/16" Urtex Synthetic Rope

Load Ratings	1st. Layer	Mid. Drum	Full Drum
Position 1 (lbs)	1200	875	550
Position 2 (lbs)	900	875	550
Position 3 (lbs)	700	700	550
Position 4 (lbs)	400	400	400

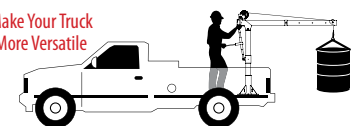
*Table based on 3/16" wire rope

Load Ratings	1st. Layer	Mid. Drum	Full Drum
Position 1 (lbs)	800	800	550
Position 2 (lbs)	800	800	550
Position 3 (lbs)	700	700	550
Position 4 (lbs)	400	400	400

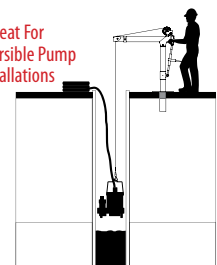
Designed for use in multiple workstations. Buy one crane and multiple bases.



Make Your Truck More Versatile



Great For Submersible Pump Installations



STEEL DAVIT CRANE

Individually tested and certified at 125% W.L.L

OZ500DAV, OZ1000DAV, OZ2500DAV



**500 lbs., 1000 lbs.
and 2500 lbs. Capacity**

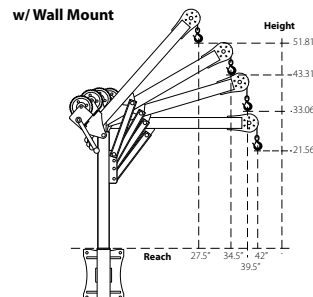
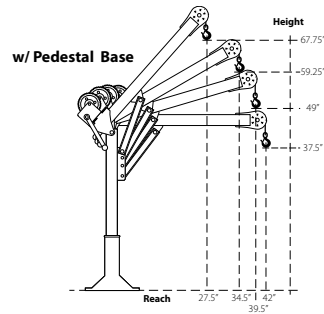
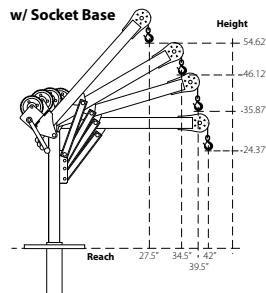
Features

- 360 degree rotation
- 4 different boom height adjustments
- 500, 1000, and 2500 lb. ratings available
- Manual Din rated CE winch with brake (Includes power drill adaptor)
- Corrosion Resistant Zinc plated finish
- Headache Ball (OZHB10) available and sold separately
- Carrying case (OZRB1) available and sold separately



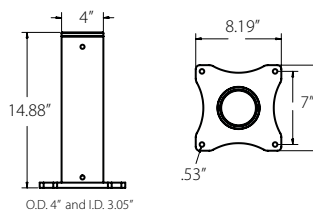
OZ1000DAV shown with optional
OZPED2 Pedestal base and
OZGAL.25-55B wire rope assembly
Bases and cable assemblies sold separately

OZ500DAV DIMENSIONS

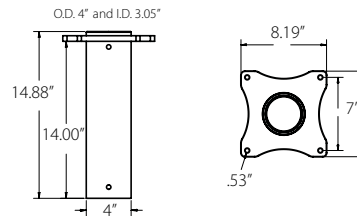


OZ500DAV BASES (sold separately) Comes with mounting template.

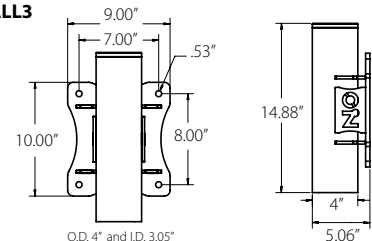
OZPED3



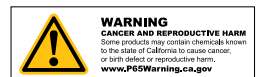
OZSOC3



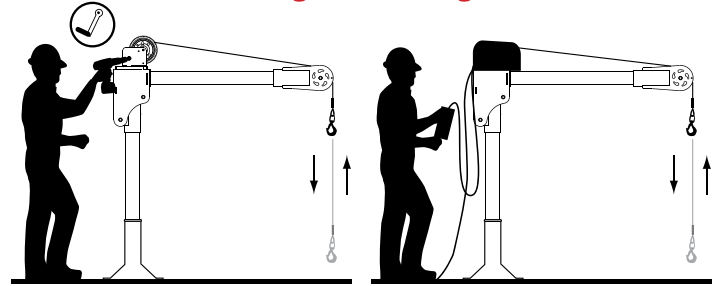
OZWALL3



Dimensions and illustrations are for reference only and subject to change without notice.



Options for faster lowering and raising



Detach winch handle for drill option

AC and DC power winches available
See page 25

Weight

Weight (excluding winch)	Boom	Mast	Net
OZ500DAV (lbs)	27	23	50
OZ1000DAV (lbs)	35	29	64
OZ2500DAV (lbs)	130	64	194

OZ500DAV & OZ1000DAV

Manual winch: 3/16" - 80 ft max. lift length • 1/4" - 55ft max. lift length

AC/DC Electric Winch: 3/16" - 90 ft max. lift length • 1/4" - 45ft max. lift length

OZ2500DAV

Manual winch: 1/4" Synthetic - 75 ft max. lift length • 5/16" Ultrex - 55ft max. lift length • 3/8" Synthetic - 45ft max. lift length

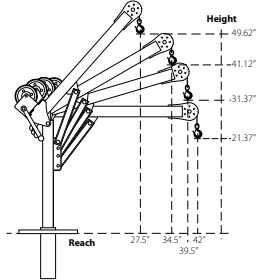
Load Ratings

*OZ500DAV based on 3/16" wire & synthetic rope

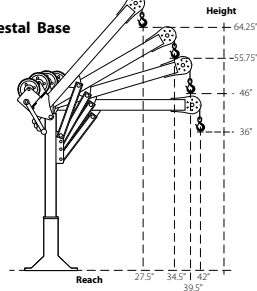
1st. Layer	500 lbs
Mid. Drum	500 lbs
Full Drum	500 lbs

OZ1000DAV DIMENSIONS

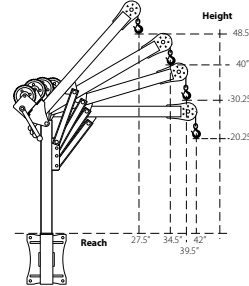
w/ Socket Base



w/ Pedestal Base



w/ Wall Mount



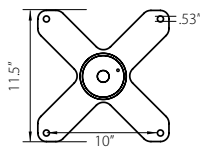
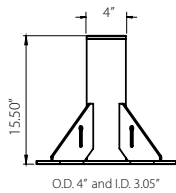
Load Ratings

*OZ1000DAV based on 1/4" wire & 3/16" Ultrex synthetic rope

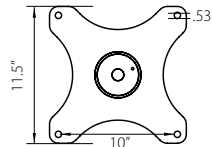
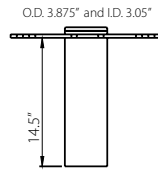
1st. Layer	1000 lbs
Mid. Drum	875 lbs
Full Drum	550 lbs

OZ1000DAV BASES (sold separately) *Base inside diameter 3.0" • Comes with mounting template.

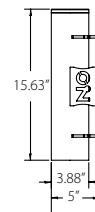
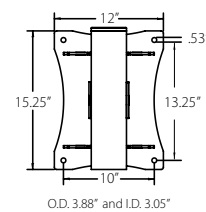
OZPED2



OZSOC2



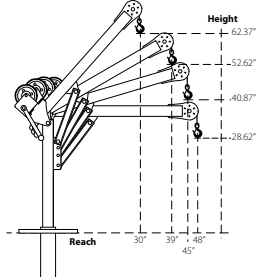
OZWALL2



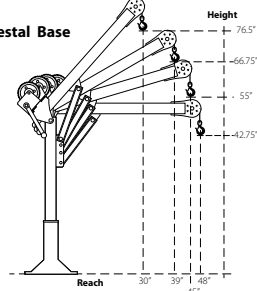
Dimensions and illustrations are for reference only and subject to change without notice.

OZ2500DAV DIMENSIONS

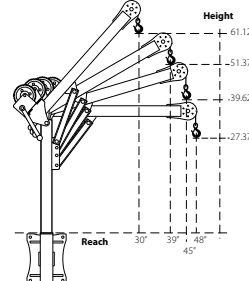
w/ Socket Base



w/ Pedestal Base



w/ Wall Mount



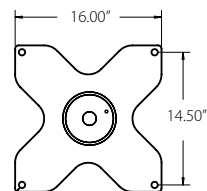
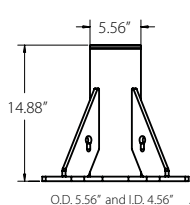
Load Ratings

*OZ2500DAV based on 3/8" synthetic rope

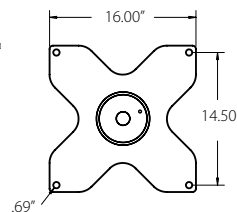
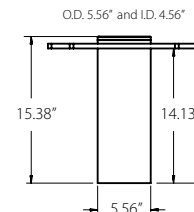
1st. Layer	2500 lbs
Mid. Drum	2000 lbs
Full Drum	1550 lbs

OZ2500DAV BASES (sold separately) *Base inside diameter 4.5" • Comes with mounting template.

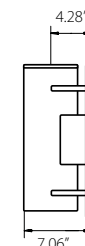
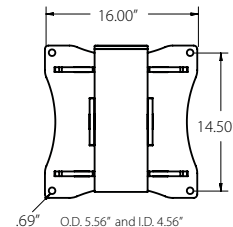
OZPED4



OZSOC4



OZWALL4



Dimensions and illustrations are for reference only and subject to change without notice.



COMPOZITE ELITE® DAVIT CRANE

Individually tested and certified at 125% W.L.L

OZCF1200DAV



Ultra
lightweight
& portable

1200 lbs. Capacity

Features

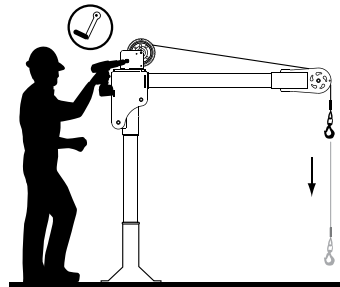
- Carbon fiber / High-strength aluminum construction
- Corrosion Resistant Finish
- Truly Portable Design
- One-Person Assembly (No Tools Needed)
- Manual Din rated CE winch with brake (Includes power drill adaptor)
- Synthetic Rope Assembly Available
- Headache Ball (OZHB10) available and sold separately
- Carrying case (OZRB1) available and sold separately

WIRE/SYNTHETIC ROPE ASSEMBLIES

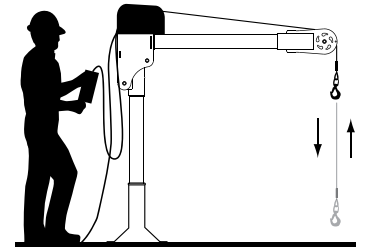
(sold separately) Custom length available.

See wire/synthetic rope assembly options page 38

Options for faster lowering and raising



Manual winch w/drill drive adaptor



AC and DC power winches available
See page 25

Weight

Weight (excluding winch)	Boom	Mast	Net
OZCF1200DAV (lbs)	18	13	31

Load Ratings (lbs.)

Based on 1/4" wire or 3/16 synthetic rope

	1st. Layer	Mid. Drum	Full Drum
Position 1 (0°)	500	500	500
Position 2 (+22.5°)	700	700	550
Position 3 (+45°)	1200	875	55

Manual winch: 3/16" - 80 ft max. lift length • 1/4" - 55ft max. lift length

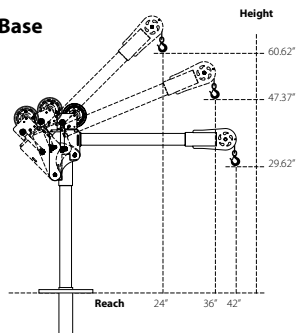
AC/DC Electric Winch: 3/16" - 90 ft max. lift length • 1/4" - 45ft max. lift length

See wire & synthetic rope assembly options page 38

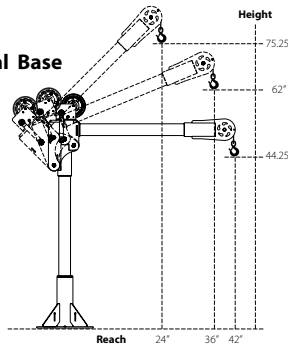
OZ1000DAV shown with optional
OZPED2 Pedestal base and
OZGAL.25-55B wire rope assembly
Bases and cable assemblies sold separately

OZCF1200DAV DIMENSIONS

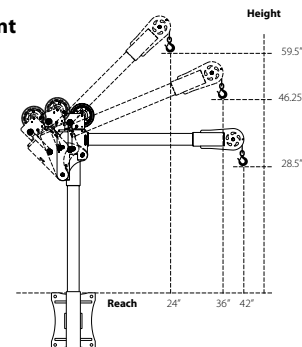
w/ Socket Base



w/ Pedestal Base

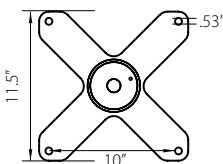
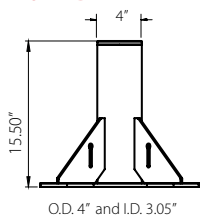


w/ Wall Mount

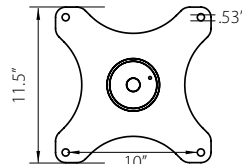
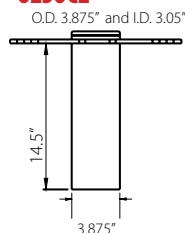


OZCF1200DAV BASES (sold separately) Comes with mounting template.

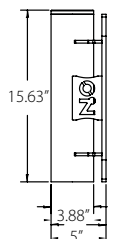
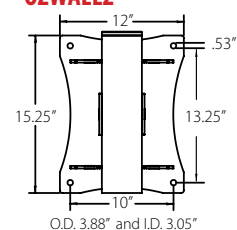
OZPED2



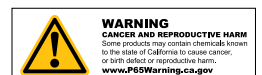
OZS0C2



OZWALL2



Dimensions and illustrations are for reference only and subject to change without notice.



WHEEL BASE

For all OZ Lifting Products davit cranes up to 1200 lb. capacity



Features

- Industrial strength steel construction with a durable powder-coat finish
- Patent-pending floor-anchoring system allows the davit to rotate while under load (when base is not anchored the davit must remain in a forward position when lifting)
- Durable polyurethane-tread indoor/outdoor wheels with rear swivel casters, ensuring smooth mobility and adaptability to various workspaces. Rear casters feature a lock brake for enhanced safety and stability when needed.
- Forklift pockets (for transporting only)

Includes

Floor-Anchor Mounting Bolt Kit: Enhance the stability and safety of your OZ Wheel Base with optional floor-anchoring bolts, ensuring secure attachment to the ground for added peace of mind during operation. Includes four (4) 12" zinc-plated hex head bolts and washers. *Concrete anchor not included.*

Davit Crane Locking Collar: This component effectively prevents the crane boom from rotating excessively, eliminating the risk of tipping hazards and ensuring a secure lifting environment. *Included with models OZWB1, OZWB1-TP, OZWB2, OZWB2-TP, and OZWB3.*

Toolbox Storage Tube: Keep your tools and Wheel Base accessories organized with this durable and versatile toolbox storage tube, molded from high-density polypropylene and featuring a secure screw-cap and latch closure for secure storage. Zip ties are included for convenient, versatile mounting.

**Davit crane sold separately*



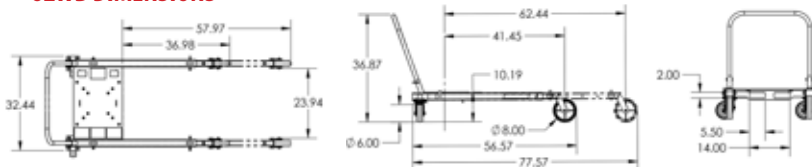
**OZWB3 shown with OZXR500
OZGAL.19-80B galvanized cable assembly
OZHB10 10lbs. headache ball**
Davit crane, headache ball, and cable assemblies sold separately.
Locking collar included with applicable wheel base kits.

OZWB	Wheel Base for OZ Lifting Products davit cranes up to 1200 lbs. capacity (pedestal base and locking collar not included)
OZWB1	Wheel Base for use with OZ1200DAV davit crane (pedestal base and locking collar included)
OZWB1-TP	Wheel Base for use with OZTP1200DAV, OZA1000DAV, OZXR1000DAV davit cranes (pedestal base and locking collar included)
OZWB2	Wheel Base for use with OZ1000DAV and OZCF1200DAV davit cranes (pedestal base and locking collar included)
OZWB2-TP	Wheel Base for use with OZTP500DAV davit crane (pedestal base and locking collar included)
OZWB3	Wheel Base for use with OZ500DAV, OZA500DAV and OZXR500DAV davit cranes (pedestal base and locking collar included)

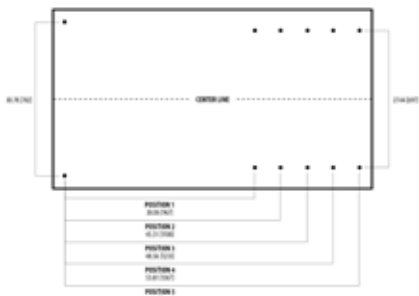
Patent-Pending Floor-Anchoring System with Locking Collar



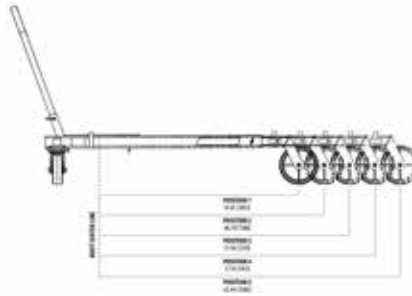
OZWB DIMENSIONS



ADJUSTABLE LEG EXTENSIONS



FLOOR-ANCHORING SYSTEM



OZWB DAVIT CRANE REACH DIAMETER

Sections are representative of hook reach in 360-degrees

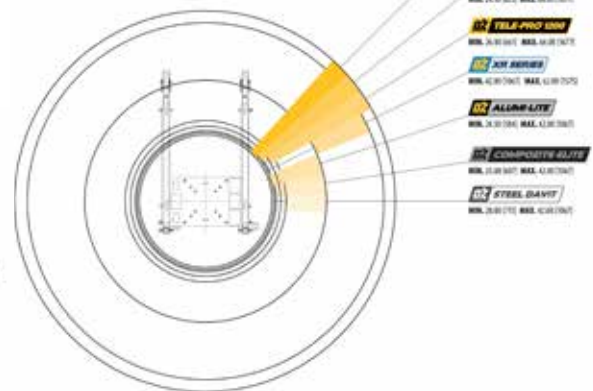


Diagram dimensional values are provided in inches. Bracketed values [] within diagram represent equivalent measurements in millimeters for informational purposes only. Dimensions and illustrations are for reference only and subject to change without notice.





APPLICATION DATA SHEET | DAVIT CRANES

P.O. Box 845 Winona, MN 55987 • Tf: (800) 749-1064 • Ph: (507) 474-6250 • Fax: (507) 452-5217 • sales@ozliftingproducts.com

Company Name: _____ Contact Name: _____

Email Address: _____

Phone: _____ Fax: _____

Address: _____ City: _____ State: _____ Zip Code: _____

1. JOB DESCRIPTION:

2. WEIGHT OF LOAD:

3. LENGTH OF LIFT:

4. DAVIT ARM REACH REQUIREMENTS:

5. WHAT CAPACITY DO YOU NEED AND AT WHAT REACH?

6. HEIGHT REQUIREMENTS:

7. WINCH REQUIREMENTS:

☐ Hand ☐ 115 Volt AC ☐ 12 Volt DC

8. WIRE/SYNTHETIC ROPE MATERIAL:

☐ Galvanized ☐ Stainless Steel ☐ Synthetic

9. HEADACHEB ALL REQUIRED:

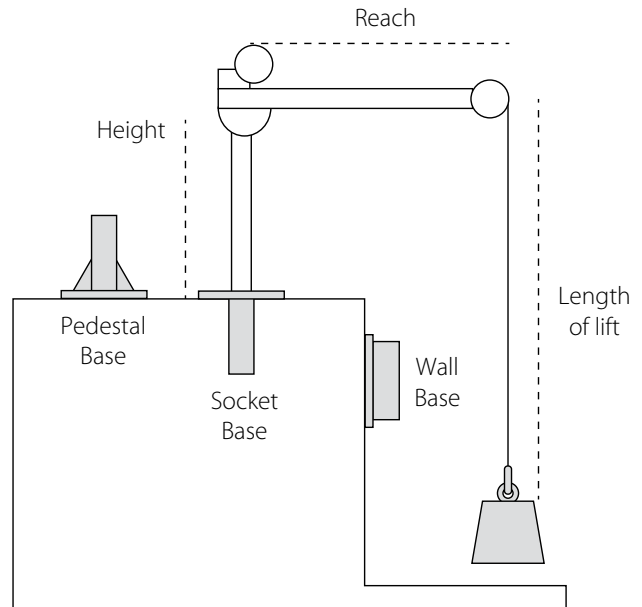
☐ YES ☐ NO

10. BASE REQUIREMENTS:

☐ Pedestal ☐ Socket ☐ Wall Mount
☐ Base Extension ☐ Wheel Base

11. WHERE IS THE DAVIT CRANE BEING USED?

12. HOW DID YOU HEAR ABOUT US?



**Purchaser is responsible for proper base installation.
Approval from a civil or structural engineer is
recommended for base installation.**

**OZ Lifting Products davit cranes are thoroughly inspected
and tested using a predetermined load.
Test certificate included. Base, wire/synthetic rope
assembly, and headache ball sold separately.**

**Load ratings of davit cranes may vary depending on
position of boom, wire rope length and winch used.**

**OZ Lifting Products equipment is not
for lifting people or lifting objects over people.**

WIRE/SYNTHETIC ROPE ASSEMBLIES

Steel Wire Rope (For manual winch)		
OZGAL.19-80B	3/16" x 80'	Galvanized cable assembly
OZSS.19-80B	3/16" x 80'	Stainless steel cable assembly
OZGAL.25-55B	1/4" x 55'	Galvanized cable assembly
OZSS.25-55B	1/4" x 55'	Stainless steel cable assembly

Above cable assemblies come with swaged ball and swivel hook with latch.

Custom cable length available.

3/16" - 80 ft. max. length • 1/4" - 55 ft. max. length

Steel Wire Rope (For manual and power winch)		
OZGAL.19-90	3/16" x 90'	Galvanized cable assembly
OZSS.19-90	3/16" x 90'	Stainless Steel cable assembly
OZGAL.25-45	1/4" x 45'	Galvanized cable assembly
OZSS.25-45	1/4" x 45'	Stainless Steel cable assembly

All cable assemblies come with a swivel hook with latch.

Custom cable length available.

3/16" - 90 ft. max. length • 1/4" - 45 ft. max. length

Synthetic Rope		
OZSR.19-15	3/16" x 15'	Ultrex Synthetic Rope
OZSR.19-50	3/16" x 50'	Ultrex Synthetic Rope
OZSR.19-90	3/16" x 90'	Ultrex Synthetic Rope
OZSR.25-50	1/4" x 50'	Ultrex Synthetic Rope
OZSR.25-75	1/4" x 75'	Ultrex Synthetic Rope
OZSR.31-45	5/16" x 45'	Ultrex Synthetic Rope

All synthetic rope assemblies come with looped ends and pre-installed swivel hook with latch



WARNING
CANCER AND REPRODUCTIVE HARM
Some products may contain chemicals known to the state of California to cause cancer, or birth defect or reproductive harm.
www.P65Warning.ca.gov



HEADACHE BALL

OZHB10

Keeps your wire rope tensioned even when lowering the hook with no load. Compatible with 3/16" and 1/4" wire rope assemblies. Headache balls sold separately from all davit cranes and wire rope assemblies.



DAVIT CRANE COVER

OZDAV-C1

Protect your davit crane from the elements with this waterproof cover. Compatible with all OZ Lifting Products davit cranes 1200 lbs. capacity or less excluding the XR series.



DAVIT CRANE ROLLER BAG

OZRB1

Store and transport your davit crane in this davit crane roller bag. Fits OZ Lifting Products davit crane models OZ500DAV, OZ1000DAV, OZ1200DAV, OZCF1200DAV, OZA500DAV, & OZA1000DAV.





800.749.1064
ozliftingproducts.com



Corporate Office:

OZ Lifting Products
5455 W 6th St.
Winona, MN 55987
Tf: (800) 749-1064

Sales/Tech Support:

Ph: (507) 474-6250
Tf: (800) 749-1064
Fx: (507) 452-5217
sales@ozliftingproducts.com

Email Orders to:

sales@ozliftingproducts.com

Payment Remit to:

OZ Lifting Products
P.O. Box 845
Winona, MN 55987

