

# AC & DC ELECTRIC WINCHES



## Features

- Two-braking system mechanical and dynamic
- Fully-enclosed gearing
- Machine cut and hardened gears
- Lightweight
- Emergency handle
- Easily bolts on to OZ davit cranes

## Capacity

OZACW (115V AC): 1200 lbs.  
OZDCW (12V DC): 1200 lbs.

## Net Weight

OZACW – 22 lbs.  
OZDCW – 24 lbs.

## Maximum Drum Capacity

3/16" diameter wire rope=90' lift  
1/4" diameter wire rope=45' lift

## Pendant/ Power Cord Length

115V AC: 10' Pendant  
10' Power Cord  
12V DC: 10' Pendant  
25' (+) Power Lead

## Motor Full Load AMPS

OZACW – 1.0 HP      OZACW – 10A  
OZDCW – 0.6 HP      OZDCW – 70A

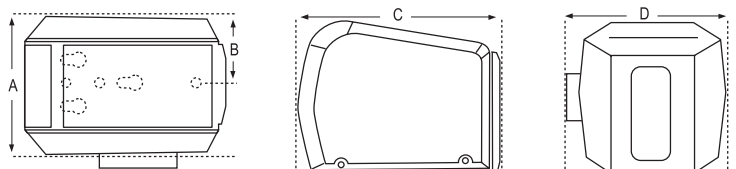


**3 minutes of continuous use  
15 minute cool down**

Load Capacity Based on the Amount of Cable	3/16" Cable	1/4" Cable
First Layer (lbs)	800	1200
Mid Drum (lbs)	800	1120
Full (lbs)	800	850

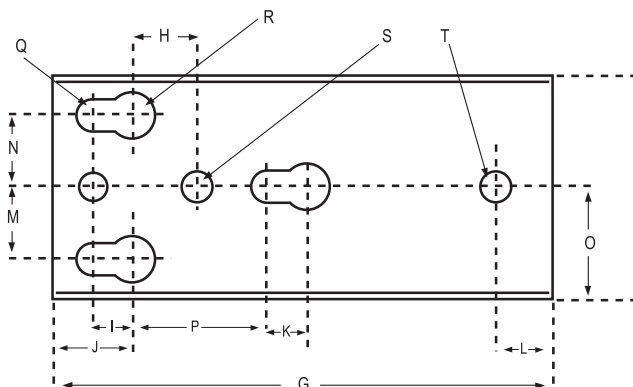
  

Winch Speed Based on Load & Cable on the Drum	First Layer	Full
AC, No Load (ft/min)	23	35
AC, Full Load (ft/min)	12	16
DC, No Load (ft/min)	21	33
DC, Full Load (ft/min)	5.5	8



## Mounting Plate

Dimensions – All Models (in)		Mounting Plate Dimensions – All Models (in)			
A	7.43	F	3.62	K	.62
B	3.57	G	8.68	L	1
C	10.81	H	1.18	M	1.25
D	8.18	I	.625	N	1.25
E	8.12	J	1.37	O	1.81



Dimensions and illustrations are for reference only and subject to change without notice.

