

# ALUMI-LITE® DAVIT CRANE

Individually tested and certified at 125% W.L.L



OZA500DAV, OZA1000DAV

**NEW!**



**500 lbs. and  
1,000 lbs. Capacity**

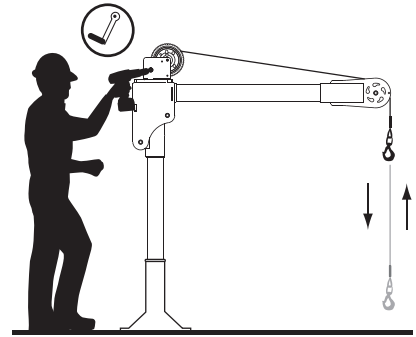
## Features

- Lightweight aerospace grade aluminum construction
- 360 degree rotation
- 3 different boom height adjustments
- Durable powder coat finish
- Truly Portable Design
- One-Person Assembly (No Tools Needed)
- Manual Din rated CE winch with brake (Includes power drill adapter)
- AC & DC winch options

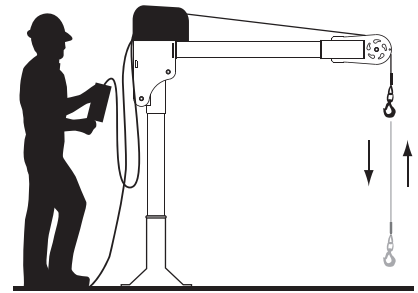
OZA500DAV shown with optional  
OZPED3 Pedestal base and  
OZGAL.19-50B galvanized wire rope assembly  
and OZHB10 headache ball  
Bases, cable assemblies and headache ball sold separately



## Options for faster lowering and raising

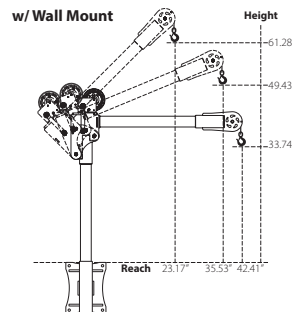
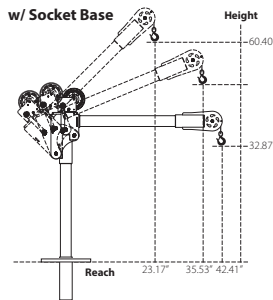
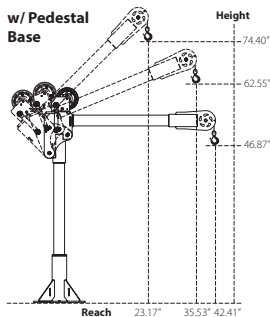


Manual winch w/drill drive adapter



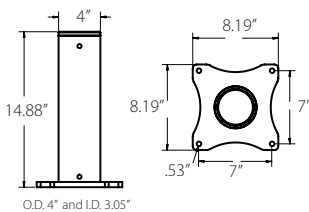
AC and DC power winches available  
See page 26

## OZA500DAV DIMENSIONS

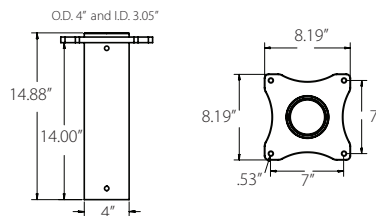


## OZA500DAV BASES (sold separately) Comes with mounting template.

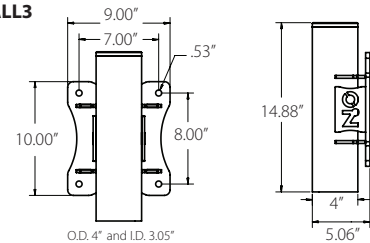
### OZPED3



### OZSOC3



### OZWALL3



## Weight

Weight (excluding winch)	Boom	Mast	Net
OZA500DAV (lbs)	12	12	24
OZA1000DAV (lbs)	25	22	47

## WIRE/SYNTHETIC ROPE ASSEMBLIES

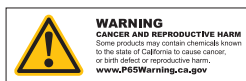
(sold separately) Custom length available.

Manual winch: 3/16" - 80 ft max. lift length  
AC/DC Electric Winch: 3/16" - 90 ft max. lift length  
See wire & synthetic rope assembly options page 39

## OZA500DAV Load Ratings (lbs.)

Based on 3/16" wire rope

	First Layer	Mid Drum	Full Drum
Position 1 (0°)	275	275	275
Position 2 (+22.5°)	330	330	330
Position 3 (+45°)	500	500	500

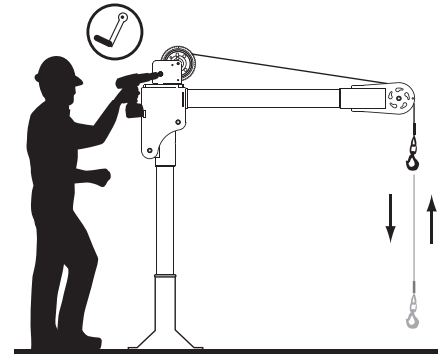


Dimensions and illustrations are for reference only and subject to change without notice.

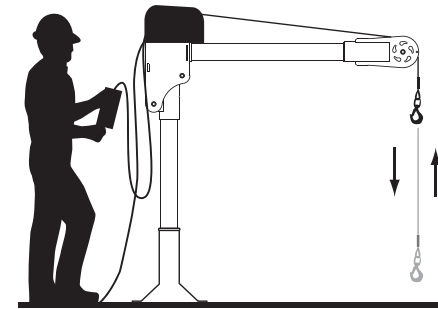




## Options for faster lowering and raising



Manual winch w/drill drive adapter



AC and DC power winches available  
See page 26



### WIRE/SYNTHETIC ROPE ASSEMBLIES

(sold separately) Custom length available.

Manual winch: 1/4" - 55ft max. lift length  
AC/DC Electric Winch: 1/4" - 45ft max. lift length  
See wire & synthetic rope assembly options page 38

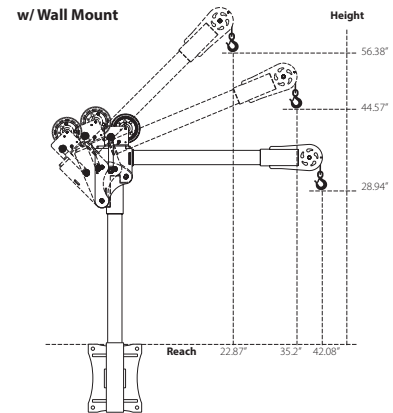
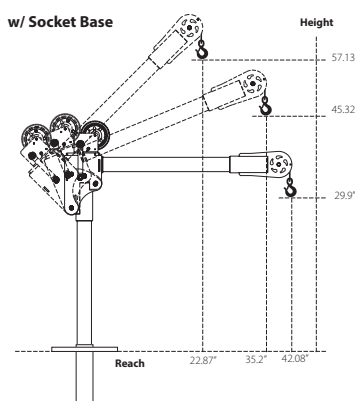
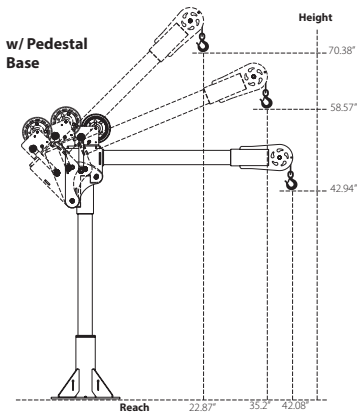
### OZA1000DAV Load Ratings (lbs.)

Based on 1/4" wire or 3/16" synthetic rope

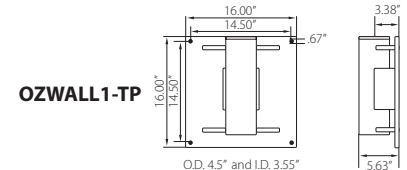
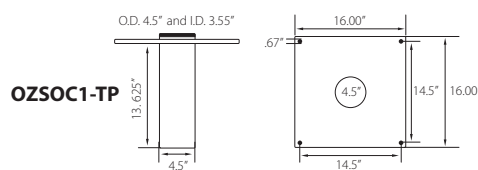
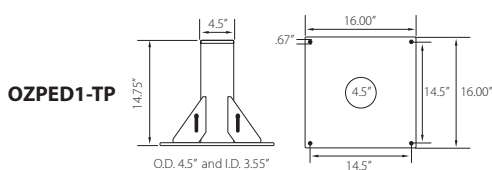
	1st Layer	Mid Drum	Full Drum
Position 1 (0°)	550	550	550
Position 2 (+22.5°)	650	650	550
Position 3 (+45°)	1000	875	550

OZA1000DAV-ACW shown with optional  
OZPED1-TP Pedestal base and  
OZSR.19-50 synthetic rope assembly  
and OZHB10 headache ball  
Bases, cable assemblies and headache ball sold separately

## OZA1000DAV DIMENSIONS



## OZA1000DAV BASES (sold separately) Comes with mounting template.



Dimensions and illustrations are for reference only and subject to change without notice.



# WHEEL BASE

For all OZ Lifting Products davit cranes up to 1200 lb. capacity



OZWB3 shown with OZXR500  
OZGAL.19-80B galvanized cable assembly  
OZHB10 10lbs. headache ball  
Davit crane, headache ball, and cable assemblies sold separately.  
Locking collar included with applicable wheel base kits.

## Features

- Industrial strength steel construction with a durable powder-coat finish
- Patent-pending floor-anchoring system allows the davit to rotate while under load (when base is not anchored the davit must remain in a forward position when lifting)
- Durable polyurethane-tread indoor/outdoor wheels with rear swivel casters, ensuring smooth mobility and adaptability to various workspaces. Rear casters feature a lock brake for enhanced safety and stability when needed.
- Forklift pockets (for transporting only)

## Includes

**Floor-Anchor Mounting Bolt Kit:** Enhance the stability and safety of your OZ Wheel Base with optional floor-anchoring bolts, ensuring secure attachment to the ground for added peace of mind during operation. Includes four (4) 12" zinc-plated hex head bolts and washers. *Concrete anchor not included.*

**Davit Crane Locking Collar:** This component effectively prevents the crane boom from rotating excessively, eliminating the risk of tipping hazards and ensuring a secure lifting environment. *Included with models OZWB1, OZWB1-TP, OZWB2, OZWB2-TP, and OZWB3.*

**Toolbox Storage Tube:** Keep your tools and Wheel Base accessories organized with this durable and versatile toolbox storage tube, molded from high-density polypropylene and featuring a secure screw-cap and latch closure for secure storage. Zip ties are included for convenient, versatile mounting.

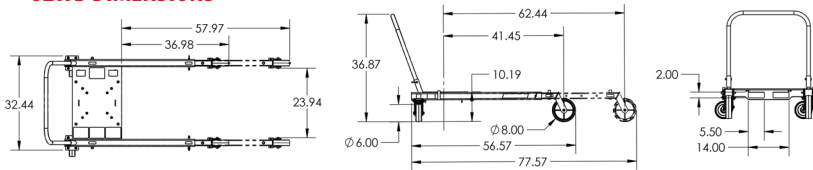
*\*Davit crane sold separately*

- OZWB** Wheel Base for OZ Lifting Products davit cranes up to 1200 lbs. capacity (pedestal base and locking collar not included)
- OZWB1** Wheel Base for use with OZ1200DAV davit crane (pedestal base and locking collar included)
- OZWB1-TP** Wheel Base for use with OZTP1200DAV, OZA1000DAV, OZXR1000DAV davit cranes (pedestal base and locking collar included)
- OZWB2** Wheel Base for use with OZ1000DAV and OZCF1200DAV davit cranes (pedestal base and locking collar included)
- OZWB2-TP** Wheel Base for use with OZTP500DAV davit crane (pedestal base and locking collar included)
- OZWB3** Wheel Base for use with OZ500DAV, OZA500DAV and OZXR500DAV davit cranes (pedestal base and locking collar included)

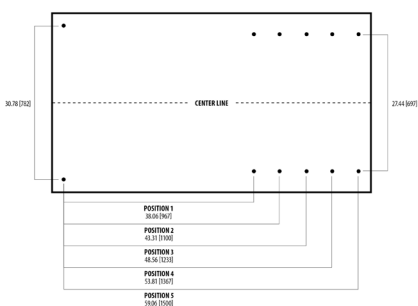
## Patent-Pending Floor-Anchoring System with Locking Collar



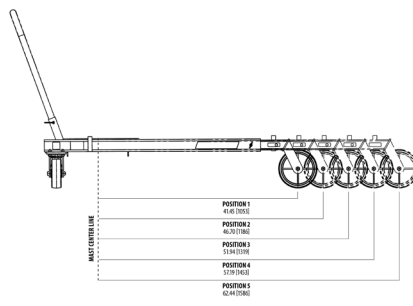
## OZWB DIMENSIONS



## ADJUSTABLE LEG EXTENSIONS



## FLOOR-ANCHORING SYSTEM



## OZWB DAVIT CRANE REACH DIAMETER

Sections are representative of hook reach in 360-degrees

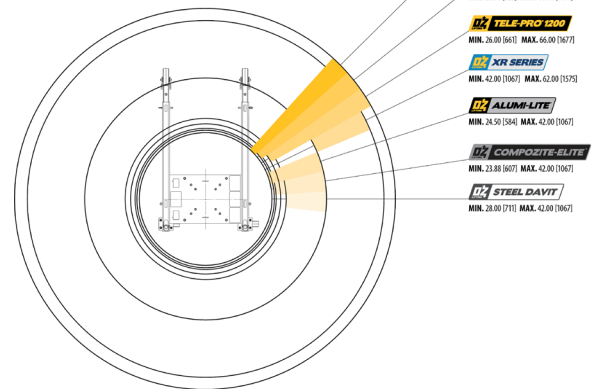


Diagram dimensional values are provided in inches. Bracketed values [ ] within diagram represent equivalent measurements in millimeters for informational purposes only. Dimensions and illustrations are for reference only and subject to change without notice.



# WIRE/SYNTHETIC ROPE ASSEMBLIES

## Steel Wire Rope (For manual winch)

OZGAL.19-80B	3/16" x 80'	Galvanized cable assembly
OZSS.19-80B	3/16" x 80'	Stainless steel cable assembly
OZGAL.25-55B	1/4" x 55'	Galvanized cable assembly
OZSS.25-55B	1/4" x 55'	Stainless steel cable assembly

Above cable assemblies come with swaged ball and swivel hook with latch.

**Custom cable length available.**

3/16" - 80 ft. max. length • 1/4" - 55 ft. max. length

## Steel Wire Rope (For manual and power winch)

OZGAL.19-90	3/16" x 90'	Galvanized cable assembly
OZSS.19-90	3/16" x 90'	Stainless Steel cable assembly
OZGAL.25-45	1/4" x 45'	Galvanized cable assembly
OZSS.25-45	1/4" x 45'	Stainless Steel cable assembly

All cable assemblies come with a swivel hook with latch.

**Custom cable length available.**

3/16" - 90 ft. max. length • 1/4" - 45 ft. max. length



## Synthetic Rope

OZSR.19-15	3/16" x 15'	Synthetic Rope
OZSR.19-50	3/16" x 50'	Synthetic Rope
OZSR.19-90	3/16" x 90'	Synthetic Rope
OZSR.25-50	1/4" x 50'	Synthetic Rope
OZSR.25-75	1/4" x 75'	Synthetic Rope
OZSR.31-45	5/16" x 45'	Synthetic Rope

All synthetic rope assemblies come with looped ends and pre-installed swivel hook with latch





## HEADACHE BALL

OZHB10

Keeps your wire rope tensioned even when lowering the hook with no load. Compatible with 3/16" and 1/4" wire rope assemblies. Headache balls sold separately from all davit cranes and wire rope assemblies.



## DAVIT CRANE COVER

OZDAV-C1

Protect your davit crane from the elements with this waterproof cover. Compatible with all OZ Lifting Products davit cranes 1200 lbs. capacity or less excluding the XR series.



## DAVIT CRANE ROLLER BAG

OZRB1

Store and transport your davit crane in this davit crane roller bag. Fits OZ Lifting Products davit crane models OZ500DAV, OZ1000DAV, OZ1200DAV, OZCF1200DAV, OZA500DAV, & OZA1000DAV.

