

# TELE-PRO® DAVIT CRANE

Individually tested and certified at 125% W.L.L

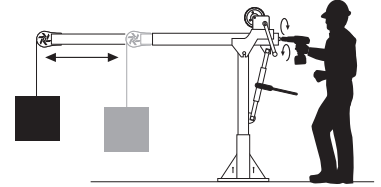
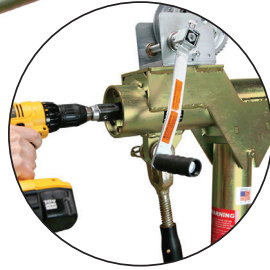


OZTP500DAV, OZTP1200DAV, OZTP2500DAV  
[PATENTED]

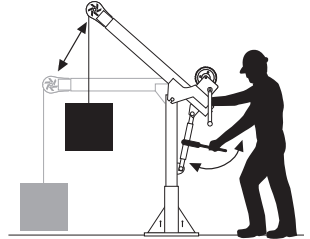


## 500 lbs., 1200 lbs. and 2500 lbs. Capacity Features

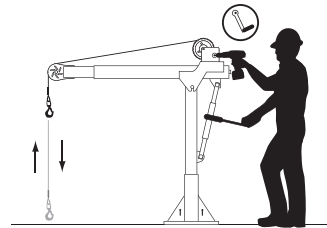
- Telescoping boom adjustment while under load
- Ratchet screw jack adjusts boom under load
- 360 degree rotation of crane on sleeve bearing
- DIN-Rated hand winch equipped standard with a load holding weatherproof Weston brake
- Quick connect winch handle with power drill adapter included
- Smart Latch technology at boom/mast connection
- Corrosion resistant zinc plated finish
- Headache Ball (OZHB10) available and sold separately
- Carrying case (OZRB1) available and sold separately (excludes TP2500)



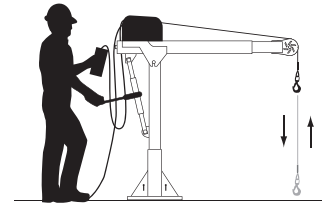
Telescoping boom can be adjusted using the winch handle or drill drive adapter



Ratchet screw jack adjusts boom under load



Detach winch handle for drill option



AC and DC power winches available  
See page 26

OZTP1200DAV shown with optional OZPED1-TP pedestal base and OZGAL.25-55B wire rope assembly  
Bases and cable assemblies sold separately

### WIRE/SYNTHETIC ROPE ASSEMBLIES (sold separately)

All cable assemblies come with swaged ball and swivel hook with latch. Custom cable length available.

Manual winch: 3/16" - 80 ft max. lift length • 1/4" - 55ft max. lift length  
AC/DC Electric Winch: 3/16" - 90 ft max. lift length • 1/4" - 45ft max. lift length  
See wire & synthetic rope assemblies page 38

## Weight

Weight (excluding winch)	Boom	Mast	Net
OZTP500DAV (lbs)	88	23	111
OZTP1200DAV (lbs)	102	36	138
OZTP2500DAV (lbs)	288	62	350

### OZTP500DAV LOAD RATINGS – Horizontal Boom Angle

– Based on 3/16 inch wire or synthetic rope

Load Ratings (lbs.)	First Layer	Mid Drum	Full Drum
Boom Position 1 at 36°	500 lbs.	500 lbs.	500 lbs.
Boom Position 2 at 46°	430 lbs.	430 lbs.	430 lbs.
Boom Position 3 at 56°	350 lbs.	350 lbs.	350 lbs.
Boom Position 4 at 66°	300 lbs.	300 lbs.	300 lbs.

### OZTP500DAV LOAD RATINGS – 45° Boom Angle

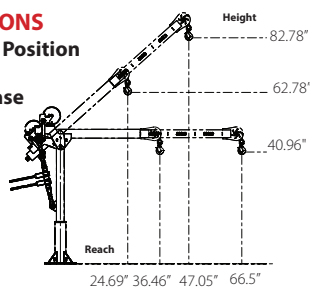
– Based on 3/16 inch wire or synthetic rope

Load Ratings (lbs.)	First Layer	Mid Drum	Full Drum
Boom Position 1 at 23°	500 lbs.	500 lbs.	500 lbs.
Boom Position 2 at 30°	500 lbs.	500 lbs.	500 lbs.
Boom Position 3 at 37°	500 lbs.	500 lbs.	500 lbs.
Boom Position 4 at 44°	450 lbs.	450 lbs.	450 lbs.

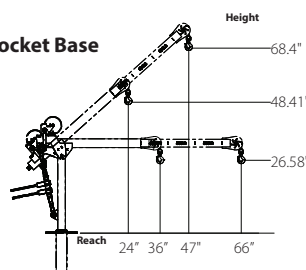
### OZTP500DAV DIMENSIONS

#### Horizontal and 45° Boom Position

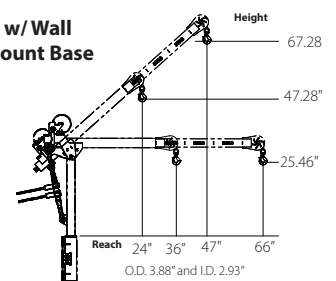
w/ Pedestal Base



w/ Socket Base

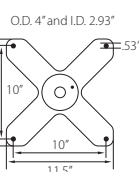
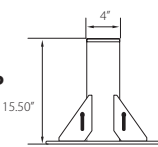


w/ Wall Mount Base

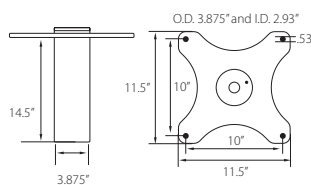


OZTP500DAV BASES (sold separately) Comes with mounting template.

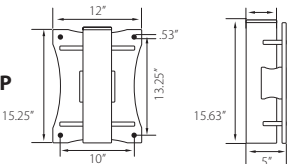
OZPED2-TP



OZSOC2-TP



OZWALL2-TP

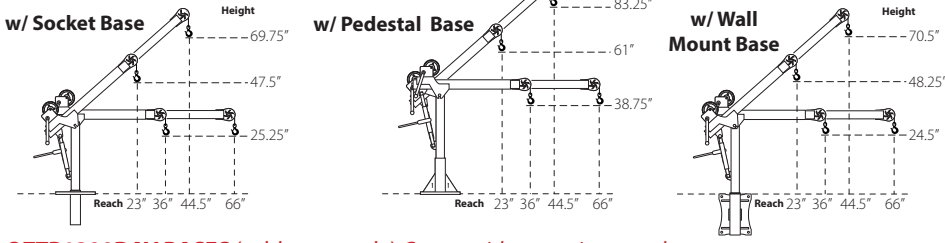


Load ratings shown are based on a manual winch. Load ratings will vary depending on wire or synthetic rope length and diameter. Dimensions and illustrations are for reference only and subject to change without notice.

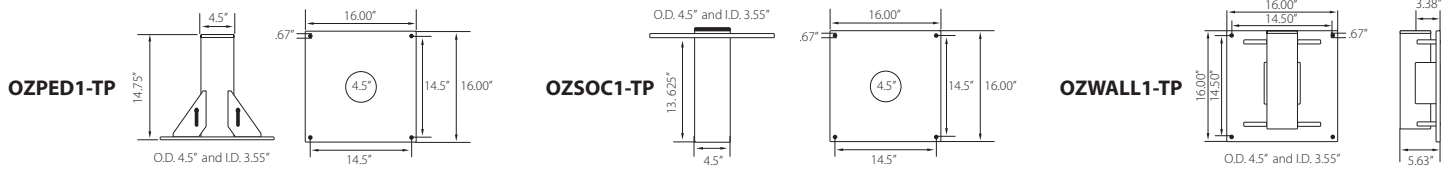


## OZTP1200DAV DIMENSIONS

### Horizontal and 45° Boom Position



### OZTP1200DAV BASES (sold separately) Comes with mounting template.



### OZTP1200DAV LOAD RATINGS – Horizontal Boom Angle

– Based on 3/16 inch wire rope

Load Ratings (lbs.)	First Layer	Mid Drum	Full Drum
Boom Position 1 at 36°	800 lbs.	800 lbs.	550 lbs.
Boom Position 2 at 46°	800 lbs.	800 lbs.	550 lbs.
Boom Position 3 at 56°	750 lbs.	750 lbs.	550 lbs.
Boom Position 4 at 66°	650 lbs.	650 lbs.	550 lbs.

### OZTP1200DAV LOAD RATINGS – Horizontal Boom Angle

– Based on 1/4 inch wire rope or 3/16 inch synthetic rope

Load Ratings (lbs.)	First Layer	Mid Drum	Full Drum
Boom Position 1 at 36°	1200 lbs.	875 lbs.	550 lbs.
Boom Position 2 at 46°	900 lbs.	875 lbs.	550 lbs.
Boom Position 3 at 56°	750 lbs.	750 lbs.	550 lbs.
Boom Position 4 at 66°	650 lbs.	650 lbs.	550 lbs.

### OZTP1200DAV LOAD RATINGS – 45° Boom Angle

– Based on 3/16 inch wire rope

Load Ratings (lbs.)	First Layer	Mid Drum	Full Drum
Boom Position 1 at 23°	800 lbs.	800 lbs.	550 lbs.
Boom Position 2 at 30.25°	800 lbs.	800 lbs.	550 lbs.
Boom Position 3 at 37.25°	800 lbs.	800 lbs.	550 lbs.
Boom Position 4 at 44.5°	800 lbs.	800 lbs.	550 lbs.

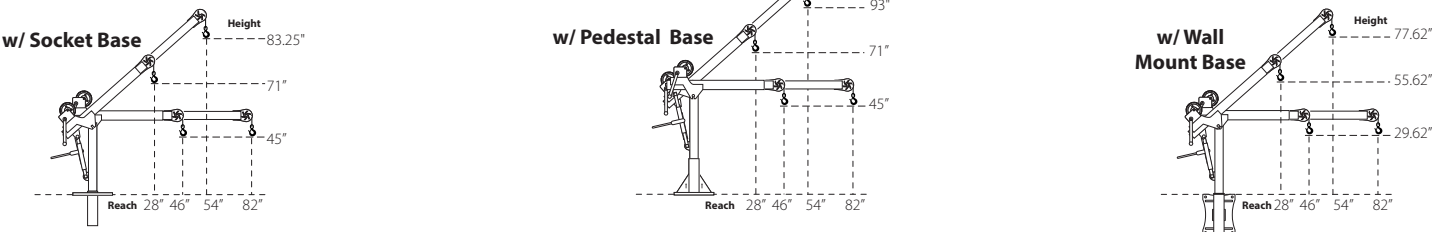
### OZTP1200DAV LOAD RATINGS – 45° Boom Angle

– Based on 1/4 inch wire rope or 3/16 inch synthetic rope

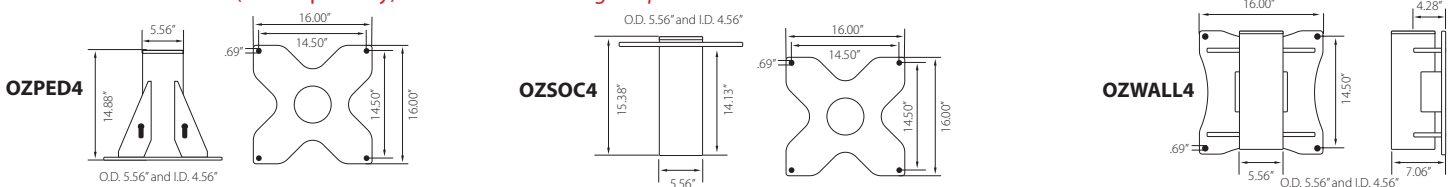
Load Ratings (lbs.)	First Layer	Mid Drum	Full Drum
Boom Position 1 at 23°	1200 lbs.	875 lbs.	550 lbs.
Boom Position 2 at 30.25°	1200 lbs.	875 lbs.	550 lbs.
Boom Position 3 at 37.25°	1100 lbs.	875 lbs.	550 lbs.
Boom Position 4 at 44.5°	950 lbs.	875 lbs.	550 lbs.

## OZTP2500DAV DIMENSIONS

### Horizontal and 45° Boom Position



### OZTP2500DAV BASES (sold separately) Comes with mounting template.



### OZTP2500DAV LOAD RATINGS – Horizontal Boom Angle

– Based on 1/4 inch synthetic rope

Load Ratings (lbs.)	First Layer	Mid Drum	Full Drum
Boom Position 1 at 46°	2000 lbs.	2000 lbs.	1550 lbs.
Boom Position 2 at 58°	1900 lbs.	1900 lbs.	1550 lbs.
Boom Position 3 at 70°	1600 lbs.	1600 lbs.	1550 lbs.
Boom Position 4 at 82°	1300 lbs.	1300 lbs.	1300 lbs.

### OZTP2500DAV LOAD RATINGS – Horizontal Boom Angle

– Based on 3/8" or 5/16" synthetic rope

Load Ratings (lbs.)	First Layer	Mid Drum	Full Drum
Boom Position 1 at 46°	2500 lbs.	2015 lbs.	1550 lbs.
Boom Position 2 at 58°	1900 lbs.	1900 lbs.	1550 lbs.
Boom Position 3 at 70°	1600 lbs.	1600 lbs.	1550 lbs.
Boom Position 4 at 82°	1300 lbs.	1300 lbs.	1300 lbs.

### OZTP2500DAV LOAD RATINGS – 45° Boom Angle

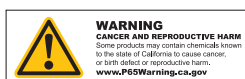
– Based on 1/4 inch synthetic rope

Load Ratings (lbs.)	First Layer	Mid Drum	Full Drum
Boom Position 1 at 28°	2000 lbs.	2000 lbs.	1550 lbs.
Boom Position 2 at 37°	2000 lbs.	2000 lbs.	1550 lbs.
Boom Position 3 at 45.5°	2000 lbs.	2000 lbs.	1550 lbs.
Boom Position 4 at 54°	2000 lbs.	2000 lbs.	1550 lbs.

### OZTP2500DAV LOAD RATINGS – 45° Boom Angle

– Based on 3/8" or 5/16" synthetic rope

Load Ratings (lbs.)	First Layer	Mid Drum	Full Drum
Boom Position 1 at 28°	2500 lbs.	2015 lbs.	1550 lbs.
Boom Position 2 at 37°	2500 lbs.	2015 lbs.	1550 lbs.
Boom Position 3 at 45.5°	2500 lbs.	2015 lbs.	1550 lbs.
Boom Position 4 at 54°	2000 lbs.	2000 lbs.	1550 lbs.



Load ratings shown are based on a manual winch. Load ratings will vary depending on wire or synthetic rope length and diameter. Dimensions and illustrations are for reference only and subject to change without notice.



# WHEEL BASE

For all OZ Lifting Products davit cranes up to 1200 lb. capacity



OZWB3 shown with OZXR500  
OZGAL.19-80B galvanized cable assembly  
OZHB10 10lbs. headache ball  
Davit crane, headache ball, and cable assemblies sold separately.  
Locking collar included with applicable wheel base kits.

## Features

- Industrial strength steel construction with a durable powder-coat finish
- Patent-pending floor-anchoring system allows the davit to rotate while under load (when base is not anchored the davit must remain in a forward position when lifting)
- Durable polyurethane-tread indoor/outdoor wheels with rear swivel casters, ensuring smooth mobility and adaptability to various workspaces. Rear casters feature a lock brake for enhanced safety and stability when needed.
- Forklift pockets (for transporting only)

## Includes

**Floor-Anchor Mounting Bolt Kit:** Enhance the stability and safety of your OZ Wheel Base with optional floor-anchoring bolts, ensuring secure attachment to the ground for added peace of mind during operation. Includes four (4) 12" zinc-plated hex head bolts and washers. *Concrete anchor not included.*

**Davit Crane Locking Collar:** This component effectively prevents the crane boom from rotating excessively, eliminating the risk of tipping hazards and ensuring a secure lifting environment. *Included with models OZWB1, OZWB1-TP, OZWB2, OZWB2-TP, and OZWB3.*

**Toolbox Storage Tube:** Keep your tools and Wheel Base accessories organized with this durable and versatile toolbox storage tube, molded from high-density polypropylene and featuring a secure screw-cap and latch closure for secure storage. Zip ties are included for convenient, versatile mounting.

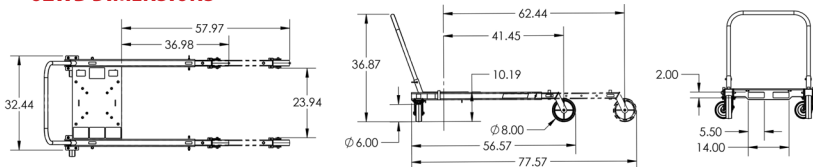
\*Davit crane sold separately

- OZWB** Wheel Base for OZ Lifting Products davit cranes up to 1200 lbs. capacity (pedestal base and locking collar not included)
- OZWB1** Wheel Base for use with OZ1200DAV davit crane (pedestal base and locking collar included)
- OZWB1-TP** Wheel Base for use with OZTP1200DAV, OZA1000DAV, OZXR1000DAV davit cranes (pedestal base and locking collar included)
- OZWB2** Wheel Base for use with OZ1000DAV and OZCF1200DAV davit cranes (pedestal base and locking collar included)
- OZWB2-TP** Wheel Base for use with OZTP500DAV davit crane (pedestal base and locking collar included)
- OZWB3** Wheel Base for use with OZ500DAV, OZA500DAV and OZXR500DAV davit cranes (pedestal base and locking collar included)

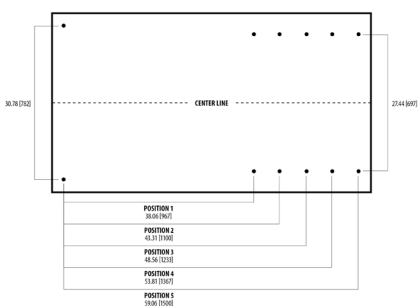
## Patent-Pending Floor-Anchoring System with Locking Collar



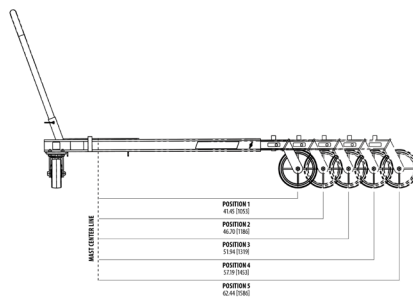
## OZWB DIMENSIONS



## ADJUSTABLE LEG EXTENSIONS



## FLOOR-ANCHORING SYSTEM



## OZWB DAVIT CRANE REACH DIAMETER

Sections are representative of hook reach in 360-degrees

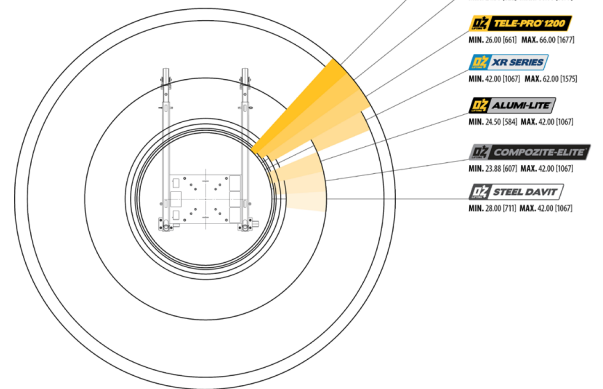
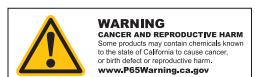


Diagram dimensional values are provided in inches. Bracketed values [ ] within diagram represent equivalent measurements in millimeters for informational purposes only. Dimensions and illustrations are for reference only and subject to change without notice.



# WIRE/SYNTHETIC ROPE ASSEMBLIES

## Steel Wire Rope (For manual winch)

OZGAL.19-80B	3/16" x 80'	Galvanized cable assembly
OZSS.19-80B	3/16" x 80'	Stainless steel cable assembly
OZGAL.25-55B	1/4" x 55'	Galvanized cable assembly
OZSS.25-55B	1/4" x 55'	Stainless steel cable assembly

Above cable assemblies come with swaged ball and swivel hook with latch.

**Custom cable length available.**

3/16" - 80 ft. max. length • 1/4" - 55 ft. max. length

## Steel Wire Rope (For manual and power winch)

OZGAL.19-90	3/16" x 90'	Galvanized cable assembly
OZSS.19-90	3/16" x 90'	Stainless Steel cable assembly
OZGAL.25-45	1/4" x 45'	Galvanized cable assembly
OZSS.25-45	1/4" x 45'	Stainless Steel cable assembly

All cable assemblies come with a swivel hook with latch.

**Custom cable length available.**

3/16" - 90 ft. max. length • 1/4" - 45 ft. max. length



## Synthetic Rope

OZSR.19-15	3/16" x 15'	Synthetic Rope
OZSR.19-50	3/16" x 50'	Synthetic Rope
OZSR.19-90	3/16" x 90'	Synthetic Rope
OZSR.25-50	1/4" x 50'	Synthetic Rope
OZSR.25-75	1/4" x 75'	Synthetic Rope
OZSR.31-45	5/16" x 45'	Synthetic Rope

All synthetic rope assemblies come with looped ends and pre-installed swivel hook with latch





## HEADACHE BALL

OZHB10

Keeps your wire rope tensioned even when lowering the hook with no load. Compatible with 3/16" and 1/4" wire rope assemblies. Headache balls sold separately from all davit cranes and wire rope assemblies.



## DAVIT CRANE COVER

OZDAV-C1

Protect your davit crane from the elements with this waterproof cover. Compatible with all OZ Lifting Products davit cranes 1200 lbs. capacity or less excluding the XR series.



## DAVIT CRANE ROLLER BAG

OZRB1

Store and transport your davit crane in this davit crane roller bag. Fits OZ Lifting Products davit crane models OZ500DAV, OZ1000DAV, OZ1200DAV, OZCF1200DAV, OZA500DAV, & OZA1000DAV.

