

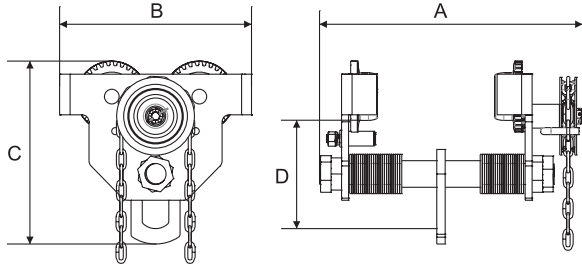
GEARED BEAM TROLLEY



Features

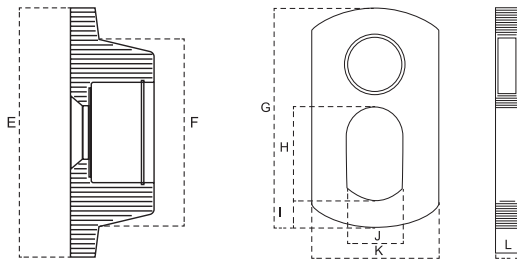
- Lightweight robust construction
- Fits most I, S, and W-Beams
- Durable baked enamel paint protection
- Gearing for positive load positioning
- Precision ball bearing trolley wheels
- Anti-drop plate
- Individual test certificate & serial number
- Zinc plated hand chain standard. Stainless steel hand chain available on request

Standards - CE, ASME/ANSI B30.17



	OZ1GBT	OZ2GBT	OZ3GBT	OZ5GBT	OZ10GBT	OZ20GBT	OZ30GBT
Capacity (tons)	1	2	3	5	10	20	30
Adjustable Flange Width (in)	2.52-8	3.46-8	3.46-8	3.46-8	4.88-8	5.39-13	5.83-13
Max Flange Thickness (in)	1.50	1.61	1.81	2.28	1.97	2.17	2.36
Product Dimensions (in)							
A	14.96	15.20	16.38	17.09	15.59	26.61	27.56
B	9.45	10.63	12.60	13.62	16.77	20.79	23.31
C	8.41	10.28	12.48	15.08	15.75	19.65	24.33
D	4.90	6.08	7.30	9.09	8.31	9.96	12.35
Minimum Radius Curve (ft)	3.28	4.27	4.92	5.25	8.3	16.40	16.40
Net Weight (lb.)	29	42	62	90	183	406	650
Standard Length of Hand Chain (ft)	9.00	9.00	9.00	9.00	9.00	9.00	9.00
Effort to Pull (lb.)	10	18	29	24	42	18	24
Chain pulled to move one foot (ft)	3.80	3.90	3.70	4.02	18.90	47.83	31
Bail Pins	1	1	1	1	2	2	2

50 and 100 T models available. Special order only. Please contact for specifications.



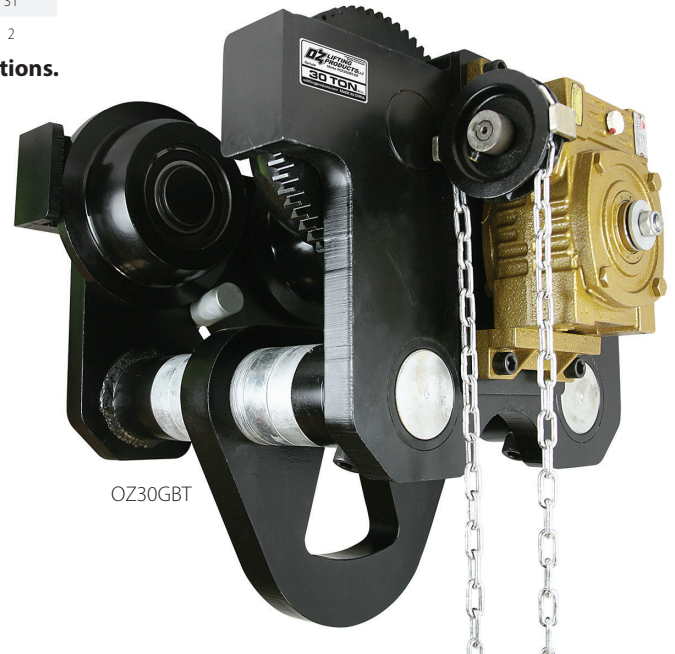
	OZ1GBT	OZ2GBT	OZ3GBT	OZ5GBT	OZ10GBT	OZ20GBT	OZ30GBT
E (in)	3.50	4.00	5.79	6.30	7.45	8.86	10.08
F (in)	2.48	2.68	4.34	4.81	5.95	6.68	7.88
G (in)	3.86	5.31	7.09	8.67	11.23	9.72	12.49
H (in)	1.46	2.01	2.96	3.75	4.73	4.53	6.42
I (in)	0.51	0.87	1.03	1.38	1.78	2.96	2.95
J (in)	1.02	1.50	1.78	2.37	3.23	4.25	5.91
K (in)	1.91	2.76	3.94	4.73	5.91	14.17	16.14
L (in)	0.39	0.47	0.63	0.79	0.99	1.38	1.97



WARNING
CANCER AND REPRODUCTIVE HARM
 Some products may contain chemicals known to the state of California to cause cancer, or birth defect or reproductive harm.
www.P65Warning.ca.gov



OZ5GBT



OZ30GBT

With Gear Reduction - 20 and 30 T

Dimensions and illustrations are for reference only and subject to change without notice.

