

# **LIFTING PRODUCTS**



 **TELE-PRO**

 **XR SERIES**

 **COMPOZITE**

 **ALUMI-LITE**

 **STEEL DAVIT**

 **COMPOZITE-ELITE**

 **CLAMPS & TROLLEYS**

 **WHEEL BASE**

# WHY OZ LIFTING PRODUCTS®?



## Service

From the first phone call to service after the sale, we carefully manage all aspects of your order. Our standard product can be quoted immediately allowing us to get you the product you need, when you need it. Customer satisfaction is our number one priority. Our team is committed to providing you the service you deserve.



## No Order Minimums

No required minimum quantity orders.



## Quick Ship

Our quick ship program contains our most common items, many of which are used in the building and construction industries where quick turnaround solutions are required. In-stock items ship in 2-3 business days with same day shipping available by request and with an additional fee.



## Made in the USA

We offer a full range of new and innovative lifting products designed and manufactured in the United States.



## Tested in the USA

At OZ Lifting Products®, our customers expect products that have endured advanced testing and rigorous inspection to ensure many years of operation. Our quality control and testing is unmatched. Our products meet and exceed expectations in regards to safety, performance, durability and customer satisfaction. Our products adhere to the ASME, ANSI, AS, OSHA and CE standards keeping you and your equipment safe.



## Test Certificate

A test certificate is included with each product and ensures the product has been load tested. An individual serial number provides complete traceability throughout the manufacturing process.



## Overload Protected

Our overload protection is standard on all of our premium hoists and select electric series models. The overload protection is integral to the product and prevents the operator from overloading the hoist. The overload resets itself and the hoist can go right back into service. Every product featuring overload is tested at our facility in Minnesota by certified OZ technicians to guarantee product performance.



## Custom Length of Lift

We offer custom lengths of lifts on all of our products. Standard or custom length, we have a solution.



## Parts

Replacement parts are available for most OZ products. Please use our parts request form at [www.ozliftingproducts.com/parts](http://www.ozliftingproducts.com/parts).



## Patented



## Trademark



## Warranty

# CARBON STEEL & STAINLESS STEEL BRAKE WINCHES



## Features

- Compact design
- Automatic weatherproof Weston-style brake
- Ergonomic rubber handle
- High gear ratio
- Multiple frame mounting positions

- Test certificate & serial number
- Solid machined gear
- For lifting or pulling/tensioning
- Dual cable anchor point

- Left hand version of stainless steel winch (OZ1000BWSS-LH) stainless steel. Optional on carbon steel

## Standard - CE



Carbon Steel  
OZ1000BW

Stainless Steel  
OZ1000BWSS

OZWINHND1

OZWINHND2

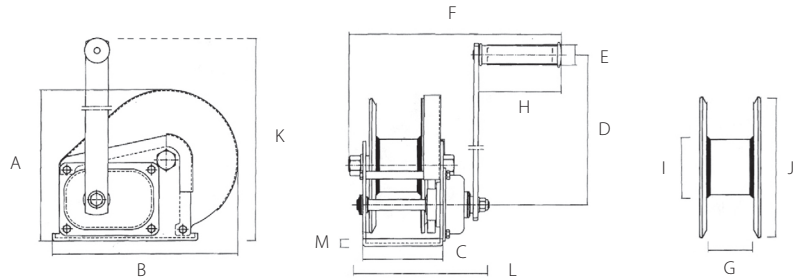
Left Handed Stainless Steel  
OZ1000BWSS-LH

Drill Drive  
Adapter

Cable/Drum Capacity	First Layer (ft)	Mid drum (ft)	Full drum (ft)
OZ1000BW – OZ1000BWSS using 1/8" wire rope	7	74	140
OZ1000BW – OZ1000BWSS using 3/16" wire rope	5	34	75
OZ1500BW – OZ1500BWSS using 3/16" wire rope	7	66	140
OZ1500BW – OZ1500BWSS using 1/4" wire rope	5	27	89
OZ2000BW – OZ2000BWSS using 1/4" wire rope	8	36	85
OZ2000BW – OZ2000BWSS using 5/16" wire rope	7	22	52
OZWINHND1 – 3/16" wire rope	11	40	80
OZWINHND1 – 1/4" wire rope	8	27	55
OZWINHND2 – 5/16" wire rope	7	42	45

Load Capacity (lb. - based on the amount of wire rope)		
OZ1000BW – OZ1000BWSS	1000	750
OZ1500BW – OZ1500BWSS	1500	1250
OZ2000BW – OZ2000BWSS	2000	1500
OZWINHND1	1200	875
OZWINHND2	2500	2000

\*Wire rope not included - see available options page 39



	OZ1000BW	OZ1000BWSS	OZ1500BW – OZ1500BWSS	OZ2000BW – OZ2000BWSS	OZWINHND1	OZWINHND2
Capacity (lb.)	1000	1000	1500	2000	1200	2500
Gear Ratio	4.2:1	4.2:1	5:1	10:1	5.4:1	17.3:1
A	6.22	6.22	7.73	8.35	6.75	6.95
B	7.20	7.20	9.36	11.10	7.50	11.42
C	3.46	3.46	4.21	5.00	3.89	5.56
D	8.26	8.26	12.68	12.99	7.00	12.33
E	1.06	1.06	1.06	1.06	1.15	1.39
F	10.43	10.43	10.63	11.81	10.72	13.64
Dimensions (in)	G	1.98	2.30	2.52	2.03	2.42
H	4.29	4.29	4.29	4.29	4.00	4.00
I	1.59	1.98	2.38	3.00	2.50	2.50
J	5.33	5.33	7.00	7.09	6.17	6.16
K	10.20	10.20	15.31	15.35	11.89	17.48
L	5.98	5.98	6.89	7.87	5.61	8.86
M	0.12	0.12	0.14	0.16	0.15	0.25
Net Weight (lb.)	8.00	8.00	17.00	22.00	10.00	24.00



**WARNING**  
**CANCER AND REPRODUCTIVE HARM**  
 Some products may contain chemicals known to the state of California to cause cancer, or birth defect or reproductive harm.  
[www.P65Warning.ca.gov](http://www.P65Warning.ca.gov)

Dimensions and illustrations are for reference only and subject to change without notice.



# AC & DC ELECTRIC WINCHES



## Features

- Two-braking system mechanical and dynamic
- Fully-enclosed gearing
- Machine cut and hardened gears
- Lightweight
- Emergency handle
- Easily bolts on to OZ davit cranes

## Capacity

OZACW (115V AC): 1200 lb.  
OZDCW (12V DC): 1200 lb.

## Net Weight

OZACW – 22 lb.  
OZDCW – 24 lb.

## Maximum Drum Capacity

3/16" diameter wire rope=90' lift  
1/4" diameter wire rope=45' lift

## Pendant/ Power Cord Length

115V AC: 10' Pendant  
10' Power Cord  
12V DC: 10' Pendant  
25' (+) Power Lead

## Motor Full Load AMPS

OZACW – 1.0 HP    OZACW – 10A  
OZDCW – 0.6 HP    OZDCW – 70A

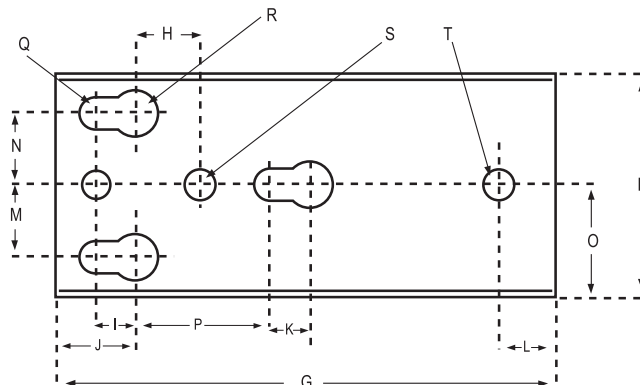
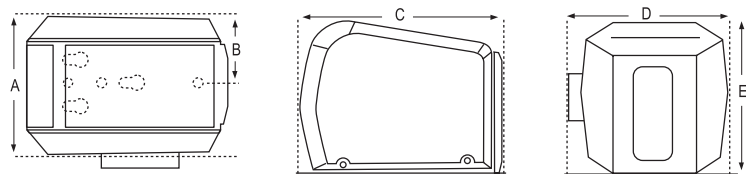


**3 minutes of continuous use  
15 minute cool down**

Load Capacity Based on the Amount of Cable	3/16" Cable	1/4" Cable
First Layer (lb.)	800	1200
Mid Drum (lb.)	800	1120
Full (lb.)	800	850

Winch Speed Based on Load & Cable on the Drum	First Layer	Full
AC, No Load (ft/min)	23	35
AC, Full Load (ft/min)	12	16
DC, No Load (ft/min)	21	33
DC, Full Load (ft/min)	5.5	8



## Mounting Plate

Dimensions - All Models (in)		Mounting Plate Dimensions - All Models (in)					
A	7.43	F	3.62	K	.62	P	3
B	3.57	G	8.68	L	1	Q	.53
C	10.81	H	1.18	M	1.25	R	.78
D	8.18	I	.625	N	1.25	S	.42
E	8.12	J	1.37	O	1.81	T	.50

Dimensions and illustrations are for reference only and subject to change without notice.





# XR SERIES® DAVIT CRANE

Individually tested and certified at 125% W.L.L



OZXR500DAV, OZXR1000DAV



**500 lb. and  
1,000 lb. Capacity**

## Features

- Maximum 62-inch reach and 87-inch hook height (both models)
- Maintains maximum weight capacity in all positions
- 360 degree rotation
- 4 different boom height adjustments
- Manual Din rated CE winch with brake. Includes power drill drive adapter
- Durable steel construction with powder coat finish
- Manual Din rated CE winch with brake (Includes power drill adapter)
- AC & DC winch options

OZXR500DAV-ACW shown with optional  
OZPED3 Pedestal base and  
OZSR.19-50 synthetic rope assembly

Bases, cable assemblies and headache ball sold separately



Handle comes standard  
on both the XR 500 and  
XR 1000

## Weight

Weight (excluding winch)	Boom	Mast	Net
OZXR500DAV (lb.)	26	26	57
OZXR1000DAV (lb.)	46	41	95

### OZXR500DAV Load Ratings (lb.)

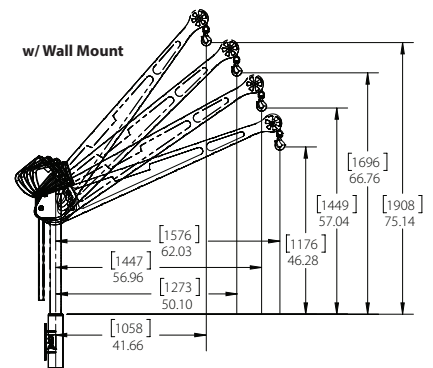
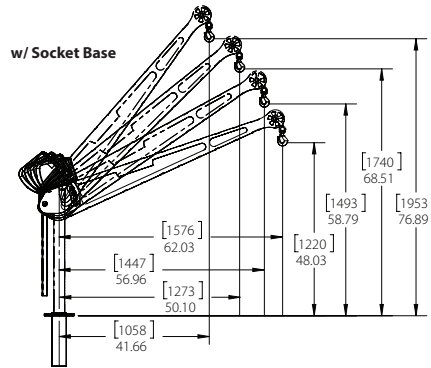
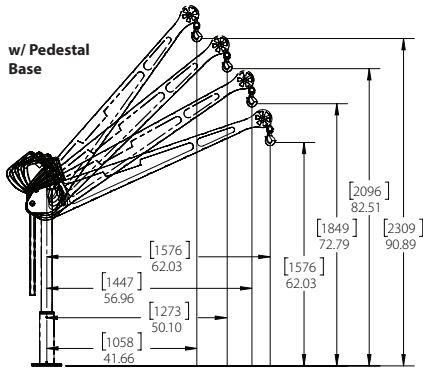
Based on 3/16" wire rope

	First Layer	Mid Drum	Full Drum
All positions	500	500	500

Manual winch: 3/16" - 80 ft max. lift length  
AC/DC Electric Winch: 3/16" - 90 ft max. lift length  
See wire & synthetic rope assembly options page 38

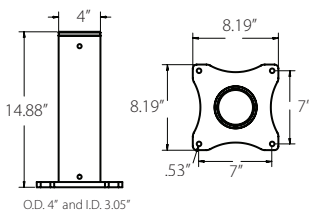
**WIRE/SYNTHETIC ROPE ASSEMBLIES**  
(sold separately) Custom length available.

## OZXR500DAV DIMENSIONS

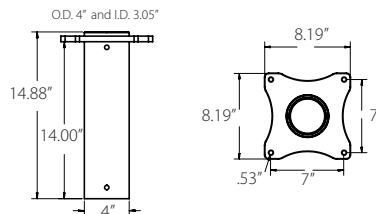


**OZXR500DAV BASES** (sold separately) Comes with mounting template.

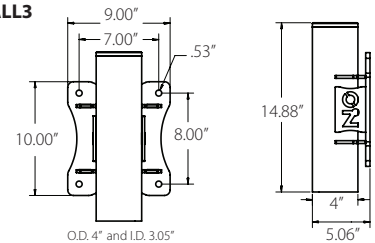
### OZPED3



### OZSOC3



### OZWALL3



Davit crane maintains maximum capacity in all positions. However, the listed load rating reflects manual winch operation, assuming average lifting effort. Handle effort will increase as the cable is spooled onto the drum. Load rating and ease of lifting depend on the specific winch style and the user's lifting effort. Dimensions and illustrations are for reference only and subject to change without notice.



## Options for faster lowering and raising



OZXR1000DAV shown with optional OZPED1-TP Pedestal base and OZGAL.25-50B galvanized wire rope assembly and OZHB10 headache ball

Bases, cable assemblies and headache ball sold separately

**WIRE/SYNTHETIC ROPE ASSEMBLIES**  
(sold separately) Custom length available.

Manual winch: 1/4" - 55 ft. max. lift length  
AC/DC Electric Winch: 1/4" - 45ft max. lift length  
See wire & synthetic rope assembly options page 39

### OZXR1000DAV Load Ratings (lb.)

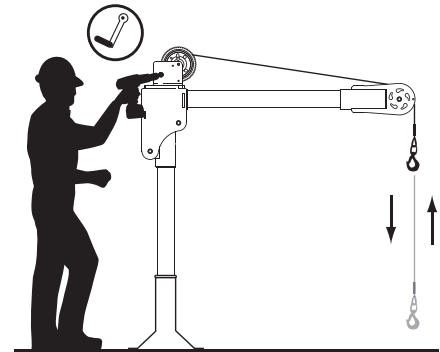
Based on 1/4" wire or 3/16" synthetic rope

All Positions	
First Layer	1000 lb.
Mid Drum	875 lb.
Full Drum	550 lb.

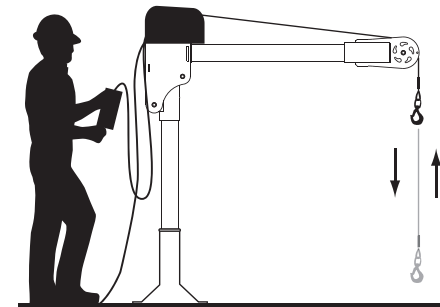
### OZXR1000DAV Load Ratings (lb.)

Based on 3/16" wire rope

All Positions	
First Layer	800 lb.
Mid Drum	800 lb.
Full Drum	550 lb.

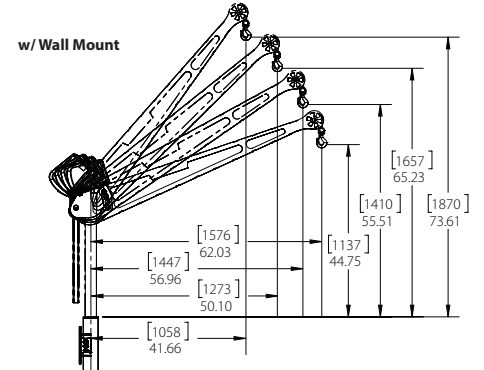
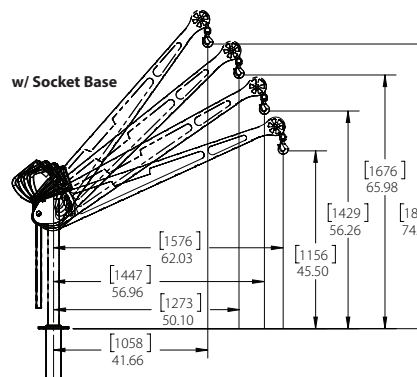
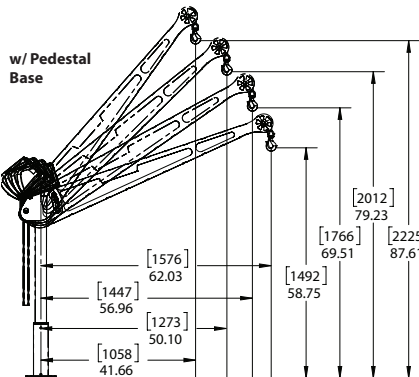


Manual winch w/drill drive adapter

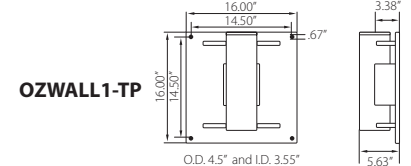
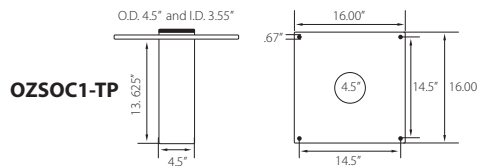
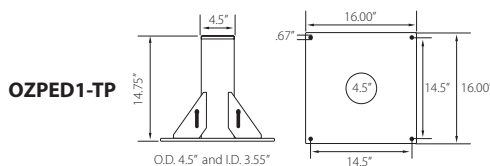


AC and DC power winches available  
See page 26

## OZXR1000DAV DIMENSIONS



**OZXR1000DAV BASES** (sold separately) Comes with mounting template.



Davit crane maintains maximum capacity in all positions. However, the listed load rating reflects manual winch operation, assuming average lifting effort. Handle effort will increase as the cable is spooled onto the drum. Load rating and ease of lifting depend on the specific winch style and the user's lifting effort. Dimensions and illustrations are for reference only and subject to change without notice.

# TELE-PRO® DAVIT CRANE

Individually tested and certified at 125% W.L.L

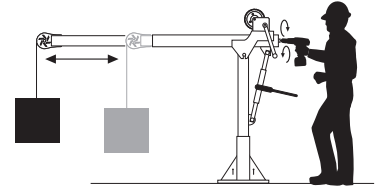
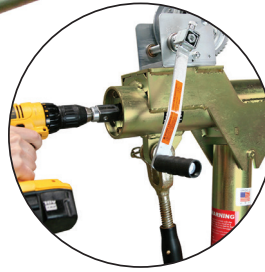


OZTP500DAV, OZTP1200DAV, OZTP2500DAV  
[PATENTED]

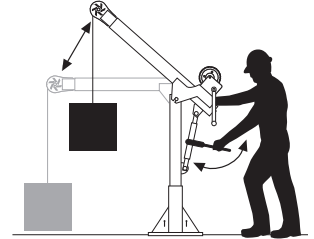


## 500 lb., 1200 lb. and 2500 lb. Capacity Features

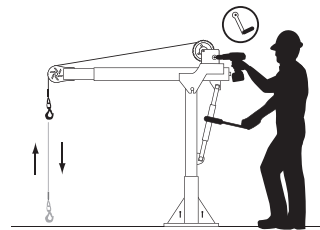
- Telescoping boom adjustment while under load
- Ratchet screw jack adjusts boom under load
- 360 degree rotation of crane on sleeve bearing
- DIN-Rated hand winch equipped standard with a load holding weatherproof Weston brake
- Quick connect winch handle with power drill adapter included
- Smart Latch technology at boom/mast connection
- Corrosion resistant zinc plated finish
- Headache Ball (OZHB10) available and sold separately
- Carrying case (OZRB1) available and sold separately (excludes TP2500)



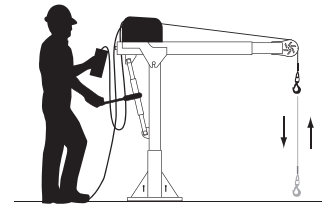
Telescoping boom can be adjusted using the winch handle or drill drive adapter



Ratchet screw jack adjusts boom under load



Detach winch handle for drill option



AC and DC power winches available  
See page 26

OZTP1200DAV shown with optional OZPED1-TP pedestal base and OZGAL.25-55B wire rope assembly  
Bases and cable assemblies sold separately

### WIRE/SYNTHETIC ROPE ASSEMBLIES (sold separately)

All cable assemblies come with swaged ball and swivel hook with latch. Custom cable length available.

Manual winch: 3/16" - 80 ft max. lift length • 1/4" - 55ft max. lift length  
AC/DC Electric Winch: 3/16" - 90 ft max. lift length • 1/4" - 45ft max. lift length  
See wire & synthetic rope assemblies page 38

## Weight

Weight (excluding winch)	Boom	Mast	Net
OZTP500DAV (lb.)	88	23	111
OZTP1200DAV (lb.)	102	36	138
OZTP2500DAV (lb.)	288	62	350

### OZTP500DAV LOAD RATINGS – Horizontal Boom Angle

– Based on 3/16 inch wire or synthetic rope

Load Ratings (lb.)	First Layer	Mid Drum	Full Drum
Boom Position 1 at 36°	500 lb.	500 lb.	500 lb.
Boom Position 2 at 46°	430 lb.	430 lb.	430 lb.
Boom Position 3 at 56°	350 lb.	350 lb.	350 lb.
Boom Position 4 at 66°	300 lb.	300 lb.	300 lb.

### OZTP500DAV LOAD RATINGS – 45° Boom Angle

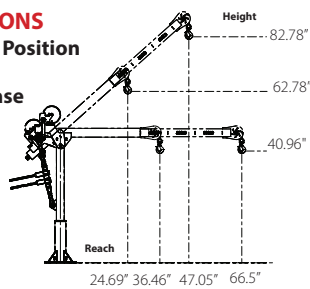
– Based on 3/16 inch wire or synthetic rope

Load Ratings (lb.)	First Layer	Mid Drum	Full Drum
Boom Position 1 at 23°	500 lb.	500 lb.	500 lb.
Boom Position 2 at 30°	500 lb.	500 lb.	500 lb.
Boom Position 3 at 37°	500 lb.	500 lb.	500 lb.
Boom Position 4 at 44°	450 lb.	450 lb.	450 lb.

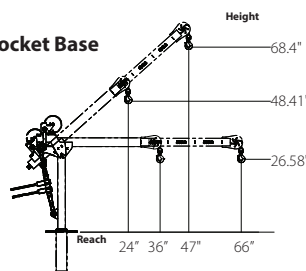
### OZTP500DAV DIMENSIONS

#### Horizontal and 45° Boom Position

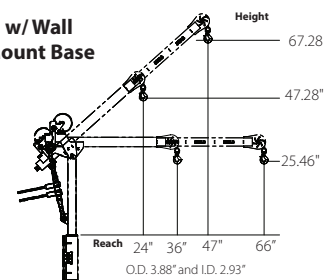
##### w/ Pedestal Base



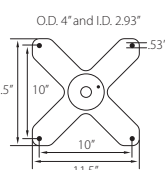
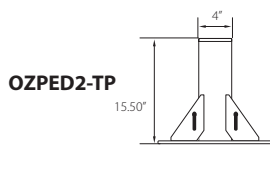
##### w/ Socket Base



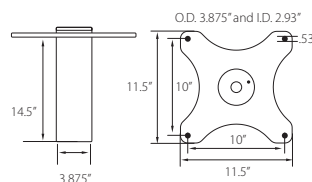
##### w/ Wall Mount Base



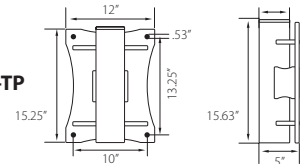
### OZTP500DAV BASES (sold separately) Comes with mounting template.



#### OZSOC2-TP



#### OZWALL2-TP



The listed load rating reflects the davit crane boom position as well as manual winch operation, assuming average lifting effort. Handle effort will increase as the cable is spooled onto the drum. Load rating and ease of lifting depend on the boom position, specific winch style, and the user's lifting effort. Dimensions and illustrations are for reference only and subject to change without notice.

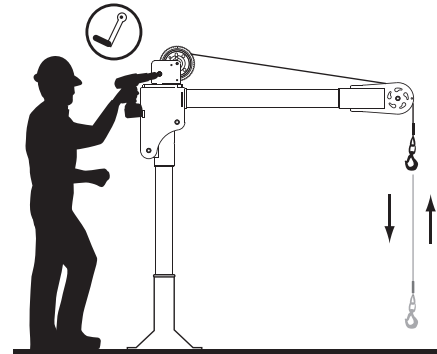


**WARNING  
CANCER AND REPRODUCTIVE HARM**  
Some products may contain chemicals known to the state of California to cause cancer, or birth defect or reproductive harm.  
www.P65Warning.ca.gov

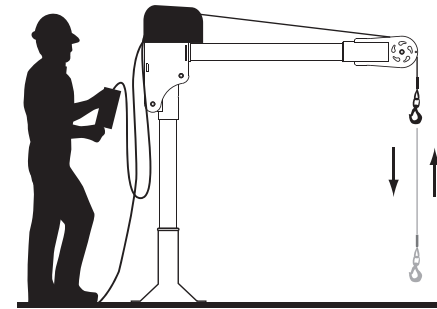




## Options for faster lowering and raising



Manual winch w/drill drive adapter



AC and DC power winches available  
See page 26



### WIRE/SYNTHETIC ROPE ASSEMBLIES (sold separately) Custom length available.

Manual winch: 1/4" - 55ft max. lift length  
AC/DC Electric Winch: 1/4" - 45ft max. lift length  
See wire & synthetic rope assembly options page 38

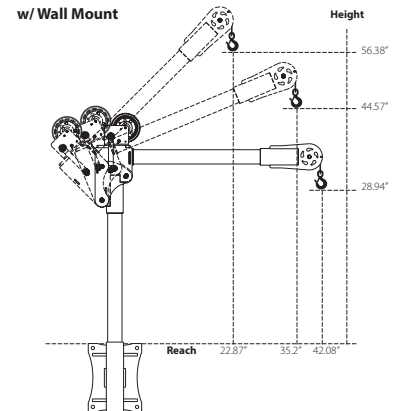
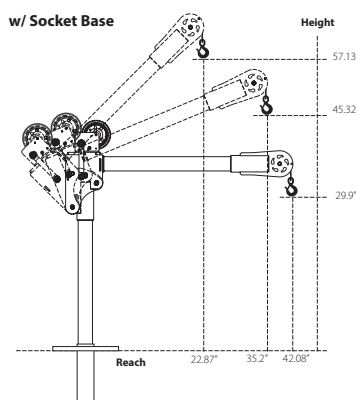
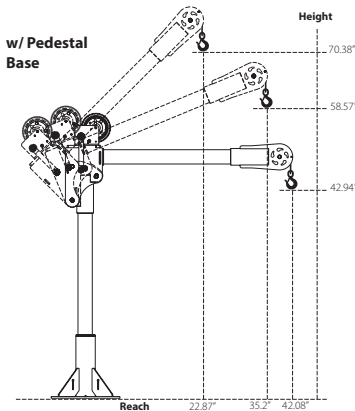
### OZA1000DAV Load Ratings (lb.)

Based on 1/4" wire or 3/16" synthetic rope

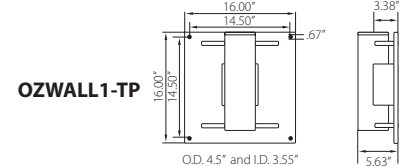
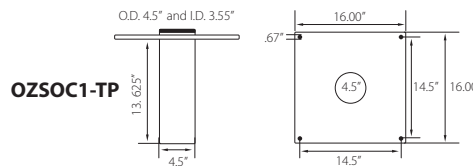
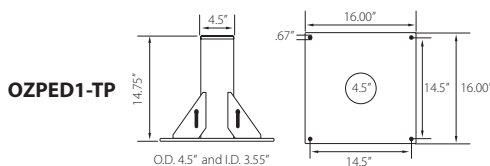
	1st Layer	Mid Drum	Full Drum
Position 1 (0°)	550	550	550
Position 2 (+22.5°)	650	650	550
Position 3 (+45°)	1000	875	550

OZA1000DAV-ACW shown with optional  
OZPED1-TP Pedestal base and  
OZSR.19-50 synthetic rope assembly  
Bases, cable assemblies and headache ball sold separately

### OZA1000DAV DIMENSIONS



### OZA1000DAV BASES (sold separately) Comes with mounting template.

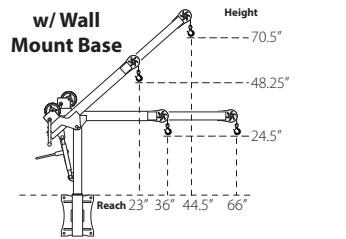
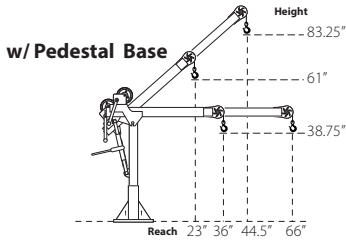
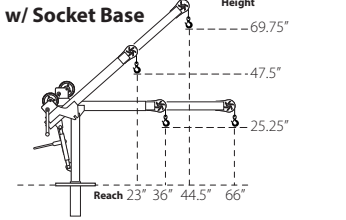


The listed load rating reflects the davit crane boom position as well as manual winch operation, assuming average lifting effort. Handle effort will increase as the cable is spooled onto the drum. Load rating and ease of lifting depend on the boom position, specific winch style, and the user's lifting effort. Dimensions and illustrations are for reference only and subject to change without notice.

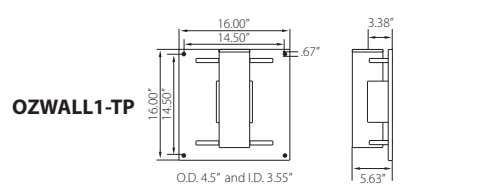
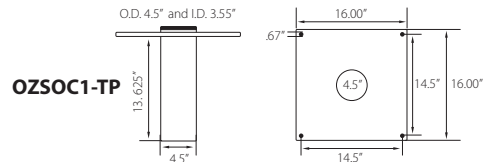
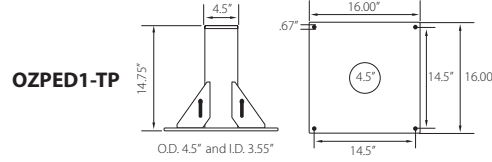




**OZTP1200DAV DIMENSIONS**  
Horizontal and 45° Boom Position



**OZTP1200DAV BASES**  
(sold separately) Comes with mounting template.



**OZTP1200DAV LOAD RATINGS - Horizontal Boom Angle**  
– Based on 3/16 inch wire rope

Load Ratings (lb.)	First Layer	Mid Drum	Full Drum
Boom Position 1 at 36°	800 lb.	800 lb.	550 lb.
Boom Position 2 at 46°	800 lb.	800 lb.	550 lb.
Boom Position 3 at 56°	750 lb.	750 lb.	550 lb.
Boom Position 4 at 66°	650 lb.	650 lb.	550 lb.

**OZTP1200DAV LOAD RATINGS - 45° Boom Angle**  
– Based on 3/16 inch wire rope

Load Ratings (lb.)	First Layer	Mid Drum	Full Drum
Boom Position 1 at 23°	800 lb.	800 lb.	550 lb.
Boom Position 2 at 30.25°	800 lb.	800 lb.	550 lb.
Boom Position 3 at 37.25°	800 lb.	800 lb.	550 lb.
Boom Position 4 at 44.5°	800 lb.	800 lb.	550 lb.

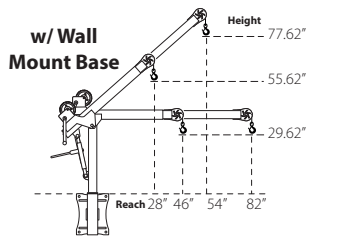
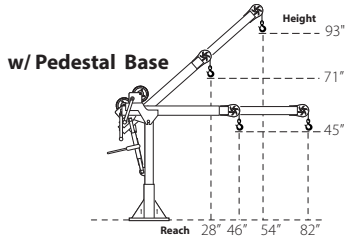
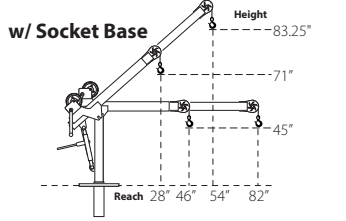
**OZTP1200DAV LOAD RATINGS - Horizontal Boom Angle**  
– Based on 1/4 inch wire rope or 3/16 inch synthetic rope

Load Ratings (lb.)	First Layer	Mid Drum	Full Drum
Boom Position 1 at 36°	1200 lb.	875 lb.	550 lb.
Boom Position 2 at 46°	900 lb.	875 lb.	550 lb.
Boom Position 3 at 56°	750 lb.	750 lb.	550 lb.
Boom Position 4 at 66°	650 lb.	650 lb.	550 lb.

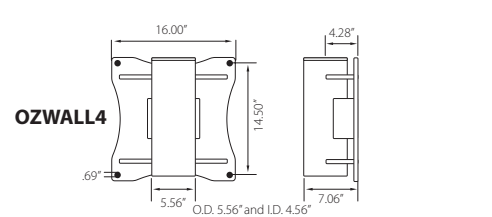
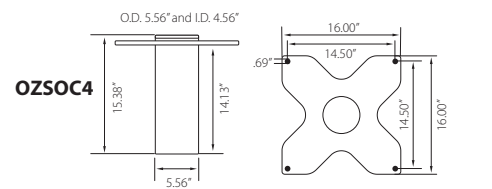
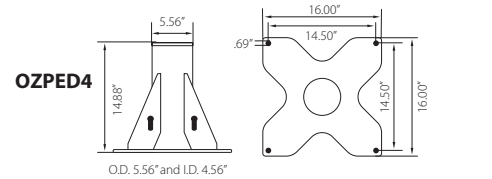
**OZTP1200DAV LOAD RATINGS - 45° Boom Angle**  
– Based on 1/4 inch wire rope or 3/16 inch synthetic rope

Load Ratings (lb.)	First Layer	Mid Drum	Full Drum
Boom Position 1 at 23°	1200 lb.	875 lb.	550 lb.
Boom Position 2 at 30.25°	1200 lb.	875 lb.	550 lb.
Boom Position 3 at 37.25°	1100 lb.	875 lb.	550 lb.
Boom Position 4 at 44.5°	950 lb.	875 lb.	550 lb.

**OZTP2500DAV DIMENSIONS**  
Horizontal and 45° Boom Position



**OZTP2500DAV BASES**  
(sold separately) Comes with mounting template.



**OZTP2500DAV LOAD RATINGS - Horizontal Boom Angle**  
– Based on 1/4 inch synthetic rope

Load Ratings (lb.)	First Layer	Mid Drum	Full Drum
Boom Position 1 at 46°	2000 lb.	2000 lb.	1550 lb.
Boom Position 2 at 58°	1900 lb.	1900 lb.	1550 lb.
Boom Position 3 at 70°	1600 lb.	1600 lb.	1550 lb.
Boom Position 4 at 82°	1300 lb.	1300 lb.	1300 lb.

**OZTP2500DAV LOAD RATINGS - 45° Boom Angle**  
– Based on 1/4 inch synthetic rope

Load Ratings (lb.)	First Layer	Mid Drum	Full Drum
Boom Position 1 at 28°	2000 lb.	2000 lb.	1550 lb.
Boom Position 2 at 37°	2000 lb.	2000 lb.	1550 lb.
Boom Position 3 at 45.5°	2000 lb.	2000 lb.	1550 lb.
Boom Position 4 at 54°	2000 lb.	2000 lb.	1550 lb.

**OZTP2500DAV LOAD RATINGS - Horizontal Boom Angle**  
– Based on 3/8" or 5/16" synthetic rope

Load Ratings (lb.)	First Layer	Mid Drum	Full Drum
Boom Position 1 at 46°	2500 lb.	2015 lb.	1550 lb.
Boom Position 2 at 58°	1900 lb.	1900 lb.	1550 lb.
Boom Position 3 at 70°	1600 lb.	1600 lb.	1550 lb.
Boom Position 4 at 82°	1300 lb.	1300 lb.	1300 lb.

**OZTP2500DAV LOAD RATINGS - 45° Boom Angle**  
– Based on 3/8" or 5/16" synthetic rope

Load Ratings (lb.)	First Layer	Mid Drum	Full Drum
Boom Position 1 at 28°	2500 lb.	2015 lb.	1550 lb.
Boom Position 2 at 37°	2500 lb.	2015 lb.	1550 lb.
Boom Position 3 at 45.5°	2500 lb.	2015 lb.	1550 lb.
Boom Position 4 at 54°	2000 lb.	2000 lb.	1550 lb.

The listed load rating reflects the davit crane boom position as well as manual winch operation, assuming average lifting effort. Handle effort will increase as the cable is spooled onto the drum. Load rating and ease of lifting depend on the boom position, specific winch style, and the user's lifting effort. Dimensions and illustrations are for reference only and subject to change without notice.



# COMPOZITE® DAVIT CRANE

Individually tested and certified at 125%



OZ1200DAV (PATENTED)



Boom Weight 43lb. (excluding winch)

Crane weighs only 83 lb. As Shown

Mast Weight 30lb.

## 1200 lb. Capacity Features

- **Boom/Extension and Mast Made of Advanced Composite Material**
- Light weight, about 40% lighter than steel
- Corrosion resistant
- Metal components mil-spec zinc plated
- External handle helps rotate crane under load
- 4 position boom
- Ratchet screw jack adjusts boom under load giving you infinite range of lift
- 360 degree rotation of crane on sleeve bearing
- No tools required for installation. One person setup.
- DIN-Rated hand winch equipped standard with a load holding weatherproof Weston brake (Cable assembly sold separately)
- Hand winch accepts two different cable termination points: swaged ball fitting or bare end cable
- Quick connect winch handle with power drill adapter included
- Smart Latch technology at boom/mast connection
- Headache Ball (OZHB10) available and sold separately. See page 34
- Carrying case (OZRB1) available and sold separately

OZ1200DAV shown with optional OZPED1 Pedestal base, OZSS.25-55B wire rope assembly, and OZHB10 headache ball

Bases, cable assemblies and headache ball sold separately

### WIRE/SYNTHETIC ROPE ASSEMBLIES

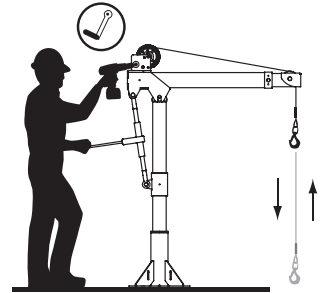
(sold separately) Custom length available.

See wire/synthetic rope assembly options page 39

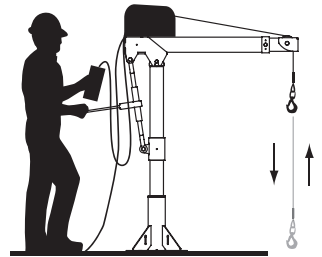
Manual winch: 3/16" - 80 ft max. lift length • 1/4" - 55ft max. lift length

AC/DC Electric Winch: 3/16" - 90 ft max. lift length • 1/4" - 45ft max. lift length

## Options for faster lowering and raising



Detach winch handle for drill option



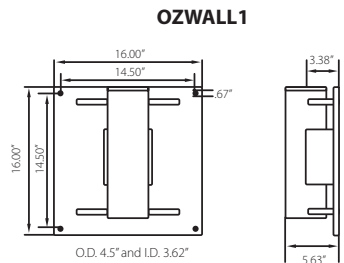
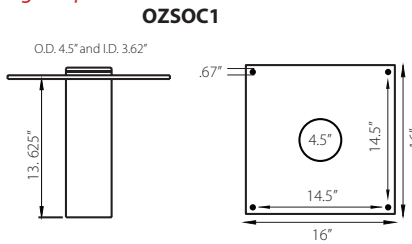
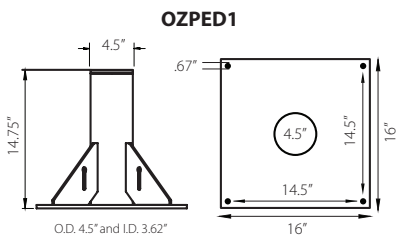
AC and DC power winches available See page 26

**One person set up. No tools required for installation. Lightweight & Portable.**

## Weight

Weight (excluding winch)	Boom	Mast	Net
OZ1200DAV (lb.)	43	30	73

## OZ1200DAV BASES (sold separately) Comes with mounting template.



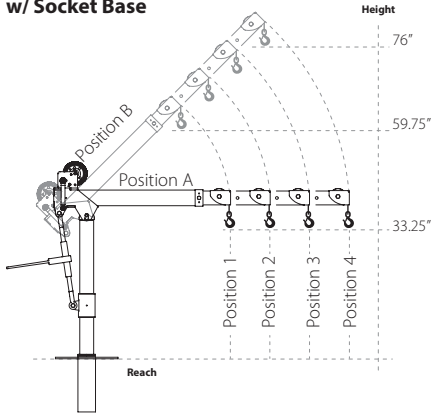
The listed load rating reflects the davit crane boom position as well as manual winch operation, assuming average lifting effort. Handle effort will increase as the cable is spooled onto the drum. Load rating and ease of lifting depend on the boom position, specific winch style, and the user's lifting effort. Dimensions and illustrations are for reference only and subject to change without notice.



**OZ1200DAV DIMENSIONS** Dimensions are for reference only and subject to change without notice.



**w/ Socket Base**



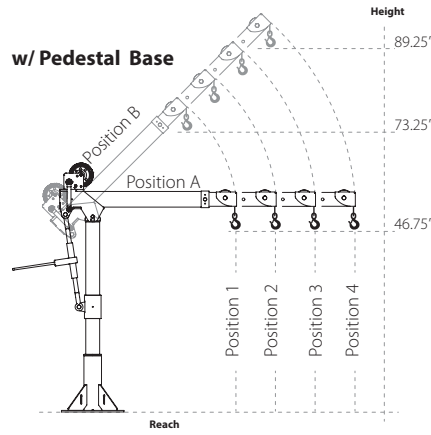
**Boom Horizontal Position (A)**

- Boom Position 1: Reach 36"
- Boom Position 2: Reach 46"
- Boom Position 3: Reach 56"
- Boom Position 4: Reach 66"

**Boom 45° Position (B)**

- Boom Position 1: Reach 22"
- Boom Position 2: Reach 29"
- Boom Position 3: Reach 36"
- Boom Position 4: Reach 43"

**w/ Pedestal Base**



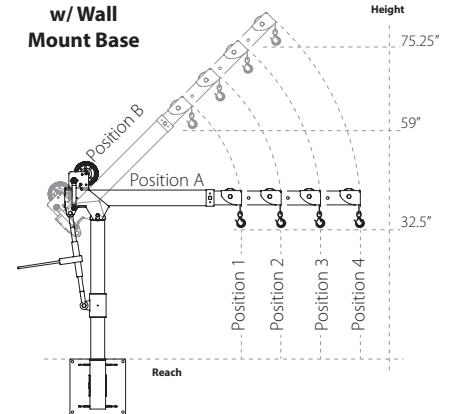
**Boom Horizontal Position (A)**

- Boom Position 1: Reach 36"
- Boom Position 2: Reach 46"
- Boom Position 3: Reach 56"
- Boom Position 4: Reach 66"

**Boom 45° Position (B)**

- Boom Position 1: Reach 22"
- Boom Position 2: Reach 29"
- Boom Position 3: Reach 36"
- Boom Position 4: Reach 43"

**w/ Wall Mount Base**

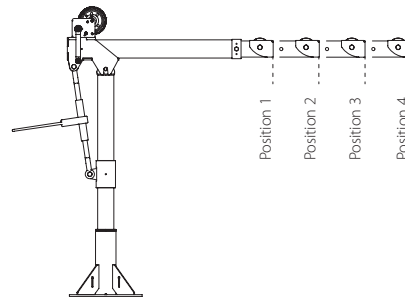


**Boom Horizontal Position (A)**

- Boom Position 1: Reach 36"
- Boom Position 2: Reach 46"
- Boom Position 3: Reach 56"
- Boom Position 4: Reach 66"

**Boom 45° Position (B)**

- Boom Position 1: Reach 22"
- Boom Position 2: Reach 29"
- Boom Position 3: Reach 36"
- Boom Position 4: Reach 43"



**Load Ratings OZ1200DAV**

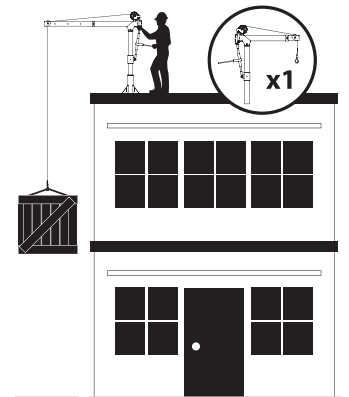
\*Table based on 1/4 inch wire rope or 3/16" Synthetic Rope

Load Ratings	First Layer	Mid Drum	Full Drum
Position 1 (lb.)	1200	875	550
Position 2 (lb.)	900	875	550
Position 3 (lb.)	700	700	550
Position 4 (lb.)	400	400	400

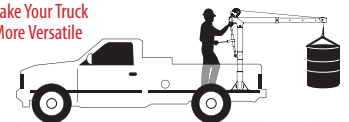
\*Table based on 3/16" wire rope

Load Ratings	First Layer	Mid Drum	Full Drum
Position 1 (lb.)	800	800	550
Position 2 (lb.)	800	800	550
Position 3 (lb.)	700	700	550
Position 4 (lb.)	400	400	400

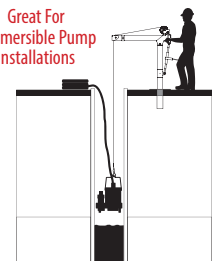
**Designed for use in multiple workstations. Buy one crane and multiple bases.**



**Make Your Truck More Versatile**



**Great For Submersible Pump Installations**



The listed load rating reflects the davit crane boom position as well as manual winch operation, assuming average lifting effort. Handle effort will increase as the cable is spooled onto the drum. Load rating and ease of lifting depend on the boom position, specific winch style, and the user's lifting effort. Dimensions and illustrations are for reference only and subject to change without notice.

# STEEL DAVIT CRANE

Individually tested and certified at 125% W.L.L

OZ500DAV, OZ1000DAV, OZ2500DAV



**500 lb., 1000 lb. and 2500 lb. Capacity**

## Features

- 360 degree rotation
- 4 different boom height adjustments
- 500, 1000, and 2500 lb. ratings available
- Manual Din rated CE winch with brake (Includes power drill adapter)
- Corrosion Resistant Zinc plated finish
- Headache Ball (OZHB10) available and sold separately
- Carrying case (OZRB1) available and sold separately

OZ1000DAV shown with optional OZPED2 Pedestal base and OZGAL.25-55B wire rope assembly  
Bases and cable assemblies sold separately

## WIRE/SYNTHETIC ROPE ASSEMBLIES

(sold separately) Custom length available.  
See wire/synthetic rope assembly options page 39

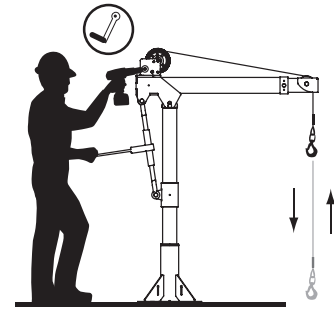
### OZ500DAV & OZ1000DAV

Manual winch: 3/16" - 80 ft max. lift length • 1/4" - 55ft max. lift length  
AC/DC Electric Winch: 3/16" - 90 ft max. lift length • 1/4" - 45ft max. lift length

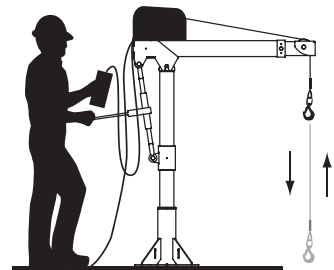
### OZ2500DAV

Manual winch: 1/4" Synthetic - 75 ft max. lift length • 5/16" Synthetic - 55ft max. lift length • 3/8" Synthetic - 45ft max. lift length

## Options for faster lowering and raising



Detach winch handle for drill option

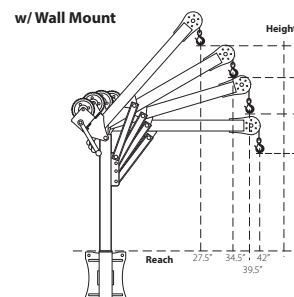
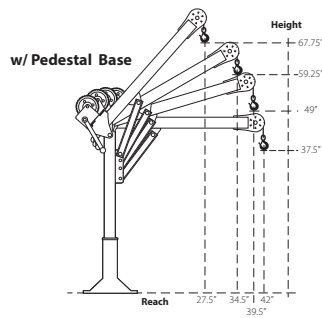
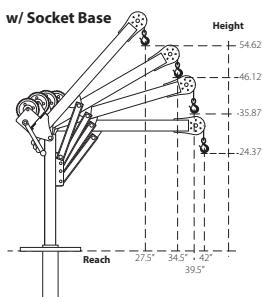


AC and DC power winches available  
See page 26

## Weight

Weight (excluding winch)	Boom	Mast	Net
OZ500DAV (lb.)	27	23	50
OZ1000DAV (lb.)	35	29	64
OZ2500DAV (lb.)	130	64	194

## OZ500DAV DIMENSIONS

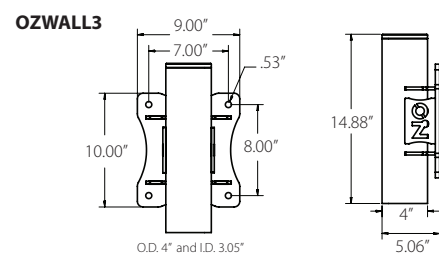
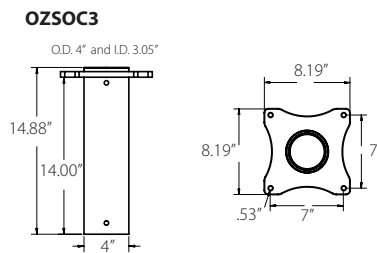
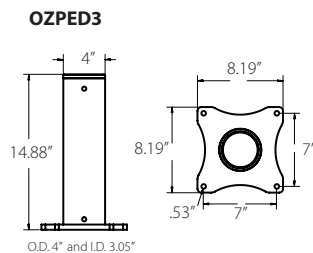


## Load Ratings

\*OZ500DAV based on 3/16" or 5/16" wire & synthetic rope

All Positions	
First Layer	500 lb.
Mid Drum	500 lb.
Full Drum	500 lb.

## OZ500DAV BASES (sold separately) Comes with mounting template.



Davit crane maintains maximum capacity in all positions. However, the listed load rating reflects manual winch operation, assuming average lifting effort. Handle effort will increase as the cable is spooled onto the drum. Load rating and ease of lifting depend on the specific winch style and the user's lifting effort. Dimensions and illustrations are for reference only and subject to change without notice.



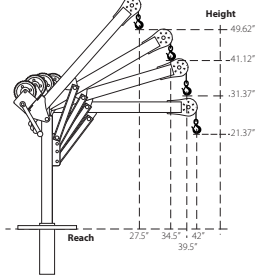
**WARNING**  
CANCER AND REPRODUCTIVE HARM  
Some products may contain chemicals known to the state of California to cause cancer, or birth defect or reproductive harm.  
www.P65Warning.ca.gov



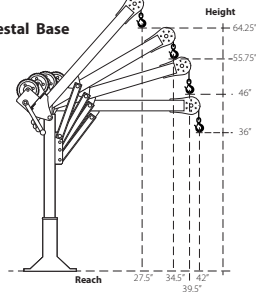


### OZ1000DAV DIMENSIONS

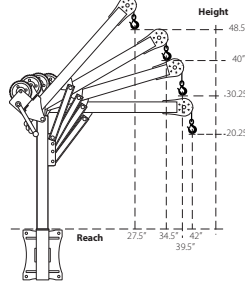
w/ Socket Base



w/ Pedestal Base



w/ Wall Mount



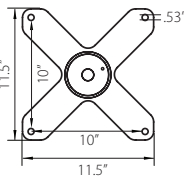
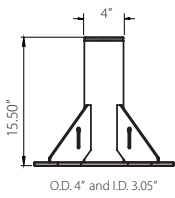
### Load Ratings

\*OZ1000DAV based on 1/4" wire & 3/16" synthetic rope

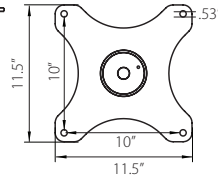
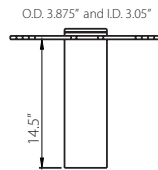
All Positions	
First Layer	1000 lb.
Mid Drum	875 lb.
Full Drum	550 lb.

OZ1000DAV BASES (sold separately) \*Base inside diameter 3.0" • Comes with mounting template.

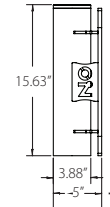
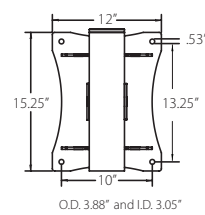
OZPED2



OZSOC2

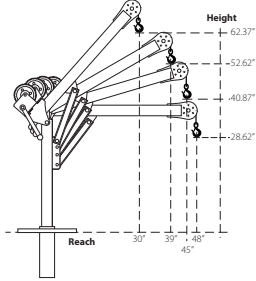


OZWALL2

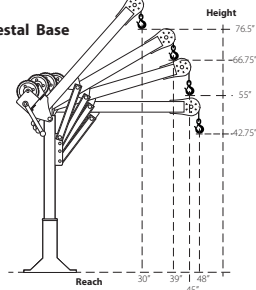


### OZ2500DAV DIMENSIONS

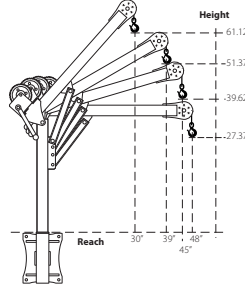
w/ Socket Base



w/ Pedestal Base



w/ Wall Mount



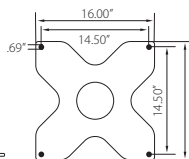
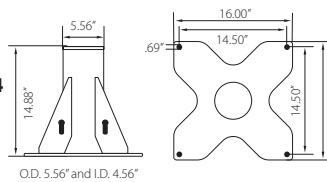
### Load Ratings

\*OZ2500DAV based on 3/8" synthetic rope

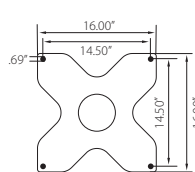
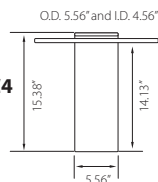
All Positions	
First Layer	2500 lb.
Mid Drum	2000 lb.
Full Drum	1550 lb.

OZ2500DAV BASES (sold separately) \*Base inside diameter 4.5" • Comes with mounting template.

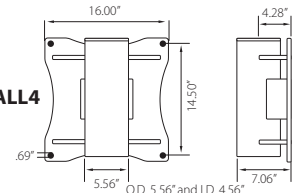
OZPED4



OZSOC4



OZWALL4



Davit crane maintains maximum capacity in all positions. However, the listed load rating reflects manual winch operation, assuming average lifting effort. Handle effort will increase as the cable is spooled onto the drum. Load rating and ease of lifting depend on the specific winch style and the user's lifting effort. Dimensions and illustrations are for reference only and subject to change without notice.



# COMPOZITE ELITE® DAVIT CRANE

Individually tested and certified at 125% W.L.L



OZCF1200DAV



Ultra lightweight & portable

## 1200 lb. Capacity

### Features

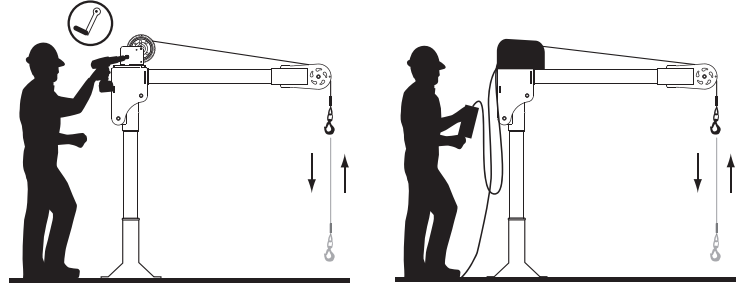
- Carbon fiber / High-strength aluminum construction
- Corrosion Resistant Finish
- Truly Portable Design
- One-Person Assembly (No Tools Needed)
- Manual Din rated CE winch with brake (Includes power drill adapter)
- Synthetic Rope Assembly Available
- Headache Ball (OZHB10) available and sold separately
- Carrying case (OZRB1) available and sold separately

### WIRE/SYNTHETIC ROPE ASSEMBLIES

(sold separately) Custom length available.

See wire/synthetic rope assembly options page 38

## Options for faster lowering and raising



Manual winch w/drill drive adapter

AC and DC power winches available  
See page 26

### Weight

Weight (excluding winch)	Boom	Mast	Net
OZFC1200DAV (lb.)	18	13	31

### Load Ratings (lb.)

Based on 1/4" wire or 3/16 synthetic rope

	First Layer	Mid Drum	Full Drum
Position 1 (0°)	500	500	500
Position 2 (+22.5°)	700	700	550
Position 3 (+45°)	1200	875	550

Manual winch: 3/16" - 80 ft max. lift length • 1/4" - 55ft max. lift length

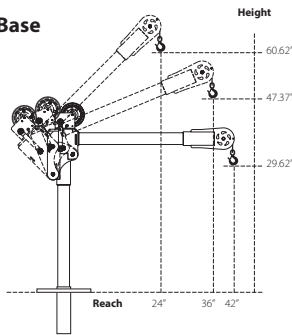
AC/DC Electric Winch: 3/16" - 90 ft max. lift length • 1/4" - 45ft max. lift length

See wire & synthetic rope assembly options page 38

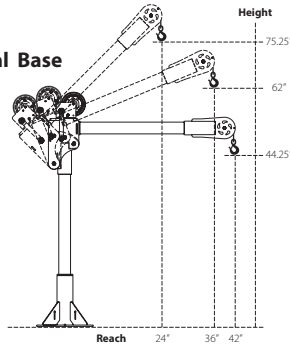
OZ1000DAV shown with optional OZPED2 Pedestal base and OZGAL.25-55B wire rope assembly  
Bases and cable assemblies sold separately

### OZCF1200DAV DIMENSIONS

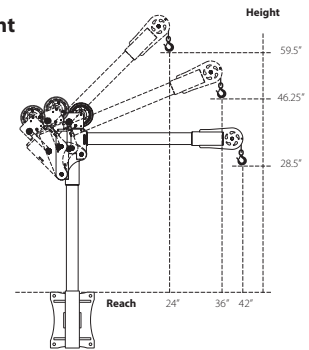
w/ Socket Base



w/ Pedestal Base

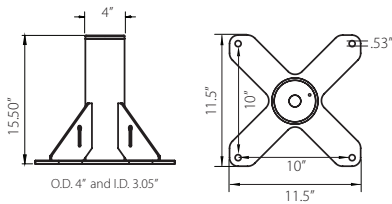


w/ Wall Mount

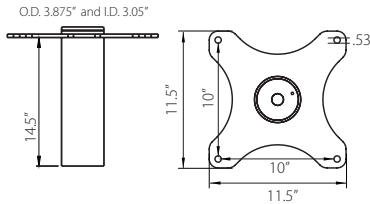


OZCF1200DAV BASES (sold separately) Comes with mounting template.

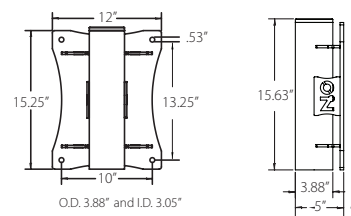
OZPED2



OZSOC2



OZWALL2



Davit crane maintains maximum capacity in all positions. However, the listed load rating reflects manual winch operation, assuming average lifting effort. Handle effort will increase as the cable is spooled onto the drum. Load rating and ease of lifting depend on the specific winch style and the user's lifting effort. Dimensions and illustrations are for reference only and subject to change without notice.



# WHEEL BASE

For all OZ Lifting Products davit cranes up to 1200 lb. capacity



OZWB3 shown with OZXR500  
OZGAL.19-80B galvanized cable assembly  
OZHB10 10lb. headache ball  
Davit crane, headache ball, and cable assemblies sold separately.  
Locking collar included with applicable wheel base kits.

## Features

- Industrial strength steel construction with a durable powder-coat finish
- Patent-pending floor-anchoring system allows the davit to rotate while under load (when base is not anchored the davit must remain in a forward position when lifting)
- Durable polyurethane-tread indoor/outdoor wheels with rear swivel casters, ensuring smooth mobility and adaptability to various workspaces. Rear casters feature a lock brake for enhanced safety and stability when needed.
- Forklift pockets (for transporting only)

## Includes

**Floor-Anchor Mounting Bolt Kit:** Enhance the stability and safety of your OZ Wheel Base with optional floor-anchoring bolts, ensuring secure attachment to the ground for added peace of mind during operation. Includes four (4) 12" zinc-plated hex head bolts and washers. *Concrete anchor not included.*

**Davit Crane Locking Collar:** This component effectively prevents the crane boom from rotating excessively, eliminating the risk of tipping hazards and ensuring a secure lifting environment. *Included with models OZWB1, OZWB1-TP, OZWB2, OZWB2-TP, and OZWB3.*

**Toolbox Storage Tube:** Keep your tools and Wheel Base accessories organized with this durable and versatile toolbox storage tube, molded from high-density polypropylene and featuring a secure screw-cap and latch closure for secure storage. Zip ties are included for convenient, versatile mounting.

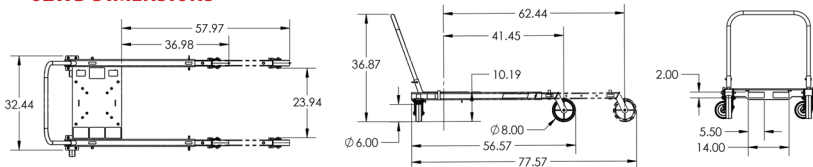
*\*Davit crane sold separately*

- OZWB** Wheel Base for OZ Lifting Products davit cranes up to 1200 lb. capacity (pedestal base and locking collar not included)
- OZWB1** Wheel Base for use with OZ1200DAV davit crane (pedestal base and locking collar included)
- OZWB1-TP** Wheel Base for use with OZTP1200DAV, OZA1000DAV, OZXR1000DAV davit cranes (pedestal base and locking collar included)
- OZWB2** Wheel Base for use with OZ1000DAV and OZCF1200DAV davit cranes (pedestal base and locking collar included)
- OZWB2-TP** Wheel Base for use with OZTP500DAV davit crane (pedestal base and locking collar included)
- OZWB3** Wheel Base for use with OZ500DAV, OZA500DAV and OZXR500DAV davit cranes (pedestal base and locking collar included)

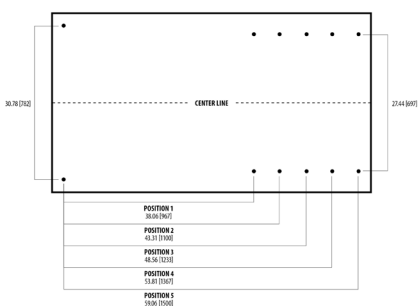
## Patent-Pending Floor-Anchoring System with Locking Collar



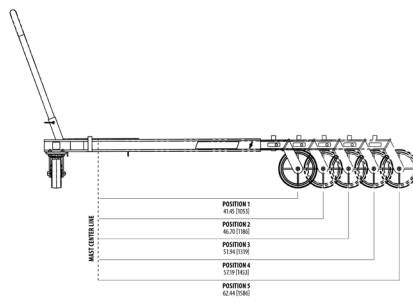
## OZWB DIMENSIONS



## ADJUSTABLE LEG EXTENSIONS



## FLOOR-ANCHORING SYSTEM



## OZWB DAVIT CRANE REACH DIAMETER

Sections are representative of hook reach in 360-degrees

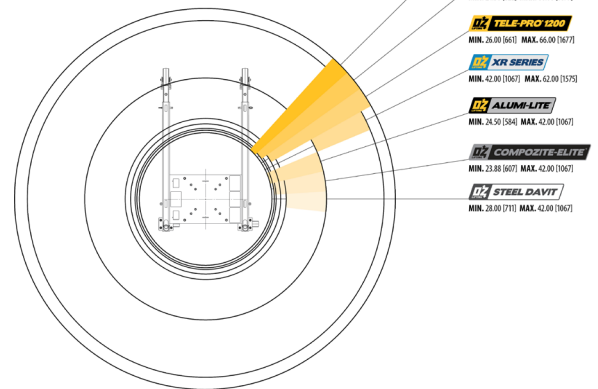


Diagram dimensional values are provided in inches. Bracketed values [ ] within diagram represent equivalent measurements in millimeters for informational purposes only. Dimensions and illustrations are for reference only and subject to change without notice.





# APPLICATION DATA SHEET | DAVIT CRANES

Company Name: \_\_\_\_\_ Contact Name: \_\_\_\_\_

Email Address: \_\_\_\_\_ Phone: \_\_\_\_\_

Address: \_\_\_\_\_ City: \_\_\_\_\_ State: \_\_\_\_\_ Zip Code: \_\_\_\_\_

Job Description: \_\_\_\_\_

Weight of Load: \_\_\_\_\_

Length of Lift: \_\_\_\_\_

Davit Arm Reach: \_\_\_\_\_

What Capacity Do You Need and at What Reach?  
\_\_\_\_\_

Height Requirement:  
\_\_\_\_\_

Winch:

- Hand
- 115V AC
- 12V DC

Rope Material:

- Galvanized
- Stainless Steel
- Synthetic

Base Requirements:

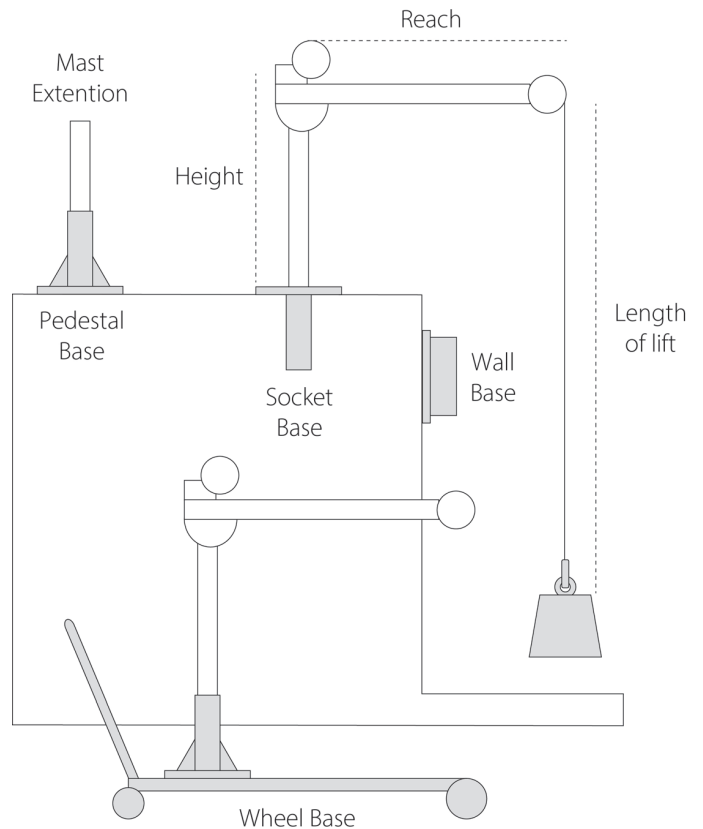
- Pedestal
- Socket
- Wall Mount
- Wheel

Optional Accessories:

- Mast Extension
- Headache Ball
- Weatherproof Winch Cover
- Weatherproof Davit Cover
- Locking Collar
- Wire Rope Holder
- Davit Crane Roller Bag

What Is The Application/Environment?  
\_\_\_\_\_

How Did You Hear About Us? \_\_\_\_\_



*Purchaser is responsible for proper base installation. Approval from a civil or structural engineer is recommended for base installation.*

*OZ Lifting Products davit cranes are thoroughly inspected and tested using a predetermined load. Test certificate included. Base, wire/synthetic rope assembly, and accessories sold separately.*

*Load rating of davit cranes may vary depending on position of boom, wire/synthetic rope length, and winch being used.*

*OZ Lifting Products equipment is not for lifting people or lifting objects over people.*

*If you have any questions about this form, need assistance selecting the right davit crane for your needs, or require a more in-depth consultation, our lifting experts are happy to help! Contact us today to schedule a personalized consultation with a davit crane specialist.*



# WIRE/SYNTHETIC ROPE ASSEMBLIES

## Steel Wire Rope (For manual winch)

OZGAL.19-80B	3/16" x 80'	Galvanized cable assembly
OZSS.19-80B	3/16" x 80'	Stainless steel cable assembly
OZGAL.25-55B	1/4" x 55'	Galvanized cable assembly
OZSS.25-55B	1/4" x 55'	Stainless steel cable assembly

Above cable assemblies come with swaged ball and swivel hook with latch.

**Custom cable length available.**

3/16" - 80 ft. max. length • 1/4" - 55 ft. max. length

## Steel Wire Rope (For manual and power winch)

OZGAL.19-90	3/16" x 90'	Galvanized cable assembly
OZSS.19-90	3/16" x 90'	Stainless steel cable assembly
OZGAL.25-45	1/4" x 45'	Galvanized cable assembly
OZSS.25-45	1/4" x 45'	Stainless Steel cable assembly

All cable assemblies come with a swivel hook with latch.

**Custom cable length available.**

3/16" - 90 ft. max. length • 1/4" - 45 ft. max. length

## Synthetic Rope

OZSR.19-15	3/16" x 15'	Synthetic Rope
OZSR.19-50	3/16" x 50'	Synthetic Rope
OZSR.19-90	3/16" x 90'	Synthetic Rope
OZSR.25-50	1/4" x 50'	Synthetic Rope
OZSR.25-75	1/4" x 75'	Synthetic Rope
OZSR.31-45	5/16" x 45'	Synthetic Rope

All synthetic rope assemblies come with looped ends and pre-installed swivel hook with latch



## HEADACHE BALL

OZHB10

Keeps your wire rope tensioned even when lowering the hook with no load. Compatible with 3/16" and 1/4" wire rope assemblies. Headache balls sold separately from all davit cranes and wire rope assemblies.



## WIRE ROPE HOLDER

OZWRH

Secure your davit crane's wire rope with our durable and easy-to-use wire rope holder. For use with 3/16" and 1/4" ball end wire rope.



## WINCH COVER

OZECW



This weatherproof winch cover provides additional protection, keeping your electric winch clean, dry, and looking new. It is specially treated for cold weather use and is made from strong, water-resistant, black vinyl, featuring drawstring for quick closure and cable opening for easy installation. Made in the USA.





## DAVIT CRANE COVER

OZDAV-C1

Protect your davit crane from the elements with this waterproof cover. Compatible with all OZ Lifting Products davit cranes 1200 lb. capacity or less excluding the XR series.



## DAVIT CRANE MAST EXTENSION

OZEXT1-COMP, OZEXT1-TP, OZEXT2, OZEXT2-TP

Increase the height of your davit crane with our durable and easy-to-install mast extender. This extender is made of high-strength steel and is available in a variety of lengths to fit most davit cranes. Add 24 inches of additional height to your davit crane with this simple and effective solution.



## DAVIT CRANE LOCKING COLLAR

TP500-LC, TP1200-LC, SCF-LC

Keep your davit crane secure and prevent accidental rotation with our durable and easy-to-use locking collar.



## DAVIT CRANE ROLLER BAG

OZRB1

The OZ Lifting Products davit crane roller bag is a durable and convenient way to transport and protect your davit crane. Made of heavy-duty nylon, the bag features a padded interior and reinforced straps to keep your crane safe from scratches and dings. Plus, the convenient roller wheels make it easy to move your crane around. The bag also has a large capacity, so you can easily fit all of your crane's accessories inside.





800.749.1064  
ozliftingproducts.com



**Corporate Office:**

OZ Lifting Products  
5455 W 6th St.  
Winona, MN 55987  
Tf: (800) 749-1064

**Sales/Tech Support:**

Ph: (507) 474-6250  
Tf: (800) 749-1064  
Fx: (507) 452-5217  
sales@ozliftingproducts.com

**Email Orders to:**

sales@ozliftingproducts.com

**Payment Remit to:**

OZ Lifting Products  
P.O. Box 845  
Winona, MN 55987

