

TELE-PRO® DAVIT CRANE

Individually tested and certified at 125% W.L.L

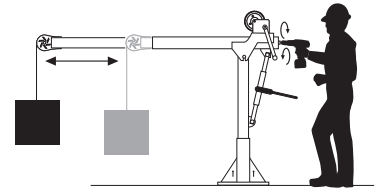
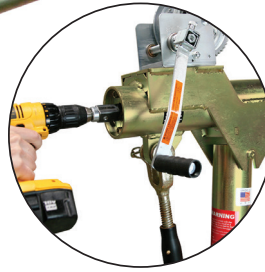


OZTP500DAV, OZTP1200DAV, OZTP2500DAV
[PATENTED]

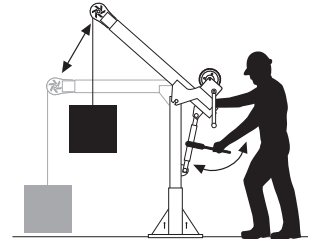


500 lb., 1200 lb. and 2500 lb. Capacity Features

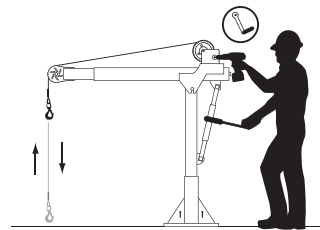
- Telescoping boom adjustment while under load
- Ratchet screw jack adjusts boom under load
- 360 degree rotation of crane on sleeve bearing
- DIN-Rated hand winch equipped standard with a load holding weatherproof Weston brake
- Quick connect winch handle with power drill adapter included
- Smart Latch technology at boom/mast connection
- Corrosion resistant zinc plated finish
- Headache Ball (OZHB10) available and sold separately
- Carrying case (OZRB1) available and sold separately (excludes TP2500)



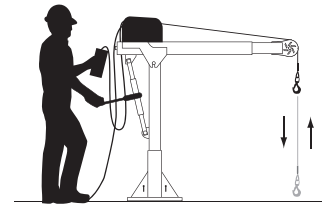
Telescoping boom can be adjusted using the winch handle or drill drive adapter



Ratchet screw jack adjusts boom under load



Detach winch handle for drill option



AC and DC power winches available
See page 26

OZTP1200DAV shown with optional OZPED1-TP pedestal base and OZGAL.25-55B wire rope assembly
Bases and cable assemblies sold separately

WIRE/SYNTHETIC ROPE ASSEMBLIES (sold separately)

All cable assemblies come with swaged ball and swivel hook with latch. *Custom cable length available.*

Manual winch: 3/16" - 80 ft max. lift length • 1/4" - 55ft max. lift length
AC/DC Electric Winch: 3/16" - 90 ft max. lift length • 1/4" - 45ft max. lift length
See wire & synthetic rope assemblies page 38

Weight

Weight (excluding winch)	Boom	Mast	Net
OZTP500DAV (lb.)	88	23	111
OZTP1200DAV (lb.)	102	36	138
OZTP2500DAV (lb.)	288	62	350

OZTP500DAV LOAD RATINGS – Horizontal Boom Angle

– Based on 3/16 inch wire or synthetic rope

Load Ratings (lb.)	First Layer	Mid Drum	Full Drum
Boom Position 1 at 36°	500 lb.	500 lb.	500 lb.
Boom Position 2 at 46°	430 lb.	430 lb.	430 lb.
Boom Position 3 at 56°	350 lb.	350 lb.	350 lb.
Boom Position 4 at 66°	300 lb.	300 lb.	300 lb.

OZTP500DAV LOAD RATINGS – 45° Boom Angle

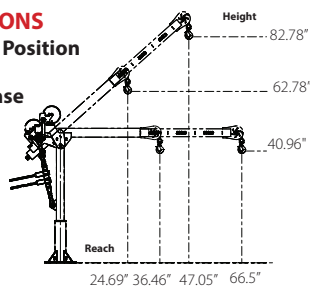
– Based on 3/16 inch wire or synthetic rope

Load Ratings (lb.)	First Layer	Mid Drum	Full Drum
Boom Position 1 at 23°	500 lb.	500 lb.	500 lb.
Boom Position 2 at 30°	500 lb.	500 lb.	500 lb.
Boom Position 3 at 37°	500 lb.	500 lb.	500 lb.
Boom Position 4 at 44°	450 lb.	450 lb.	450 lb.

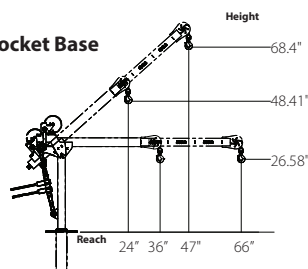
OZTP500DAV DIMENSIONS

Horizontal and 45° Boom Position

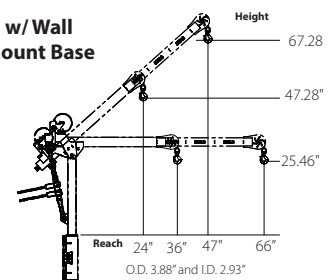
w/ Pedestal Base



w/ Socket Base

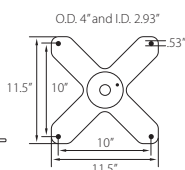
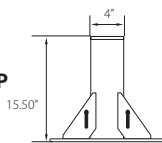


w/ Wall Mount Base

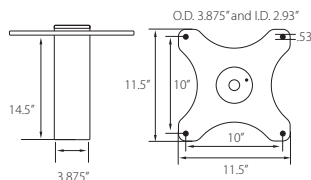


OZTP500DAV BASES (sold separately) Comes with mounting template.

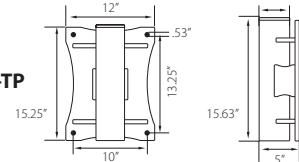
OZPED2-TP



OZSOC2-TP



OZWALL2-TP



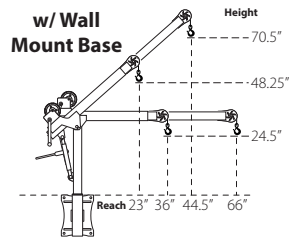
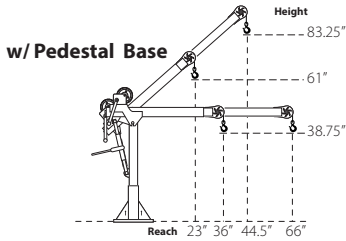
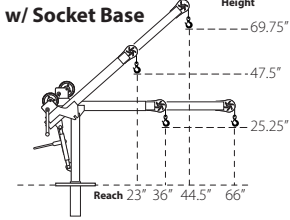
The listed load rating reflects the davit crane boom position as well as manual winch operation, assuming average lifting effort. Handle effort will increase as the cable is spooled onto the drum. Load rating and ease of lifting depend on the boom position, specific winch style, and the user's lifting effort. Dimensions and illustrations are for reference only and subject to change without notice.



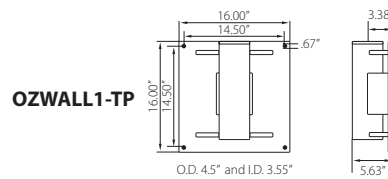
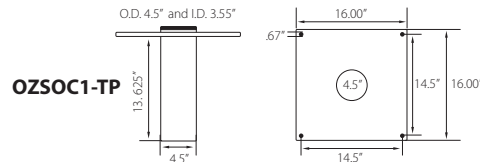
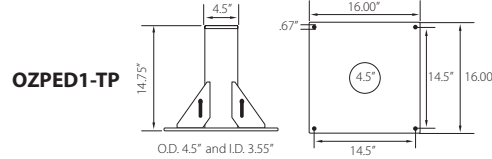
WARNING
CANCER AND REPRODUCTIVE HARM
Some products may contain chemicals known to the state of California to cause cancer, or birth defect or reproductive harm.
www.P65Warning.ca.gov



OZTP1200DAV DIMENSIONS
Horizontal and 45° Boom Position



OZTP1200DAV BASES
(sold separately) Comes with mounting template.



OZTP1200DAV LOAD RATINGS - Horizontal Boom Angle
- Based on 3/16 inch wire rope

Load Ratings (lb.)	First Layer	Mid Drum	Full Drum
Boom Position 1 at 36°	800 lb.	800 lb.	550 lb.
Boom Position 2 at 46°	800 lb.	800 lb.	550 lb.
Boom Position 3 at 56°	750 lb.	750 lb.	550 lb.
Boom Position 4 at 66°	650 lb.	650 lb.	550 lb.

OZTP1200DAV LOAD RATINGS - 45° Boom Angle
- Based on 3/16 inch wire rope

Load Ratings (lb.)	First Layer	Mid Drum	Full Drum
Boom Position 1 at 23°	800 lb.	800 lb.	550 lb.
Boom Position 2 at 30.25°	800 lb.	800 lb.	550 lb.
Boom Position 3 at 37.25°	800 lb.	800 lb.	550 lb.
Boom Position 4 at 44.5°	800 lb.	800 lb.	550 lb.

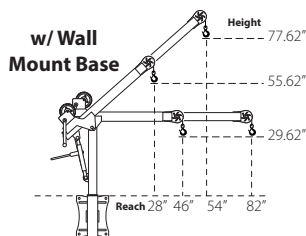
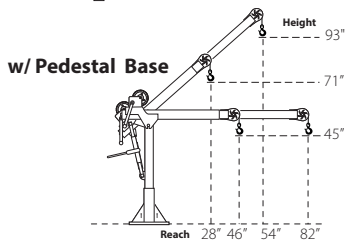
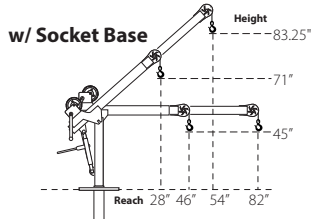
OZTP1200DAV LOAD RATINGS - Horizontal Boom Angle
- Based on 1/4 inch wire rope or 3/16 inch synthetic rope

Load Ratings (lb.)	First Layer	Mid Drum	Full Drum
Boom Position 1 at 36°	1200 lb.	875 lb.	550 lb.
Boom Position 2 at 46°	900 lb.	875 lb.	550 lb.
Boom Position 3 at 56°	750 lb.	750 lb.	550 lb.
Boom Position 4 at 66°	650 lb.	650 lb.	550 lb.

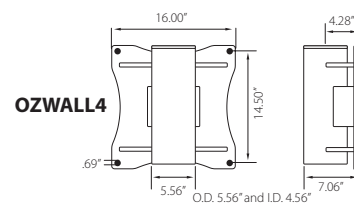
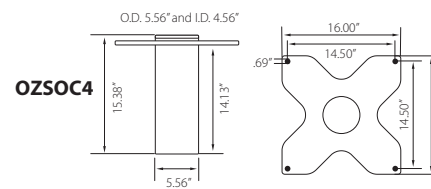
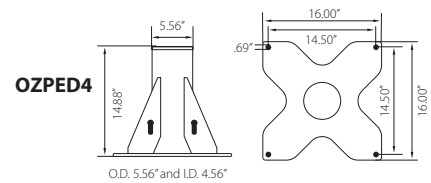
OZTP1200DAV LOAD RATINGS - 45° Boom Angle
- Based on 1/4 inch wire rope or 3/16 inch synthetic rope

Load Ratings (lb.)	First Layer	Mid Drum	Full Drum
Boom Position 1 at 23°	1200 lb.	875 lb.	550 lb.
Boom Position 2 at 30.25°	1200 lb.	875 lb.	550 lb.
Boom Position 3 at 37.25°	1100 lb.	875 lb.	550 lb.
Boom Position 4 at 44.5°	950 lb.	875 lb.	550 lb.

OZTP2500DAV DIMENSIONS
Horizontal and 45° Boom Position



OZTP2500DAV BASES
(sold separately) Comes with mounting template.



OZTP2500DAV LOAD RATINGS - Horizontal Boom Angle
- Based on 1/4 inch synthetic rope

Load Ratings (lb.)	First Layer	Mid Drum	Full Drum
Boom Position 1 at 46°	2000 lb.	2000 lb.	1550 lb.
Boom Position 2 at 58°	1900 lb.	1900 lb.	1550 lb.
Boom Position 3 at 70°	1600 lb.	1600 lb.	1550 lb.
Boom Position 4 at 82°	1300 lb.	1300 lb.	1300 lb.

OZTP2500DAV LOAD RATINGS - 45° Boom Angle
- Based on 1/4 inch synthetic rope

Load Ratings (lb.)	First Layer	Mid Drum	Full Drum
Boom Position 1 at 28°	2000 lb.	2000 lb.	1550 lb.
Boom Position 2 at 37°	2000 lb.	2000 lb.	1550 lb.
Boom Position 3 at 45.5°	2000 lb.	2000 lb.	1550 lb.
Boom Position 4 at 54°	2000 lb.	2000 lb.	1550 lb.

OZTP2500DAV LOAD RATINGS - Horizontal Boom Angle
- Based on 3/8" or 5/16" synthetic rope

Load Ratings (lb.)	First Layer	Mid Drum	Full Drum
Boom Position 1 at 46°	2500 lb.	2015 lb.	1550 lb.
Boom Position 2 at 58°	1900 lb.	1900 lb.	1550 lb.
Boom Position 3 at 70°	1600 lb.	1600 lb.	1550 lb.
Boom Position 4 at 82°	1300 lb.	1300 lb.	1300 lb.

OZTP2500DAV LOAD RATINGS - 45° Boom Angle
- Based on 3/8" or 5/16" synthetic rope

Load Ratings (lb.)	First Layer	Mid Drum	Full Drum
Boom Position 1 at 28°	2500 lb.	2015 lb.	1550 lb.
Boom Position 2 at 37°	2500 lb.	2015 lb.	1550 lb.
Boom Position 3 at 45.5°	2500 lb.	2015 lb.	1550 lb.
Boom Position 4 at 54°	2000 lb.	2000 lb.	1550 lb.

The listed load rating reflects the davit crane boom position as well as manual winch operation, assuming average lifting effort. Handle effort will increase as the cable is spooled onto the drum. Load rating and ease of lifting depend on the boom position, specific winch style, and the user's lifting effort. Dimensions and illustrations are for reference only and subject to change without notice.



WHEEL BASE

For all OZ Lifting Products davit cranes up to 1200 lb. capacity



OZWB3 shown with OZXR500
OZGAL.19-80B galvanized cable assembly
OZHB10 10lb. headache ball
Davit crane, headache ball, and cable assemblies sold separately.
Locking collar included with applicable wheel base kits.

Features

- Industrial strength steel construction with a durable powder-coat finish
- Patent-pending floor-anchoring system allows the davit to rotate while under load (when base is not anchored the davit must remain in a forward position when lifting)
- Durable polyurethane-tread indoor/outdoor wheels with rear swivel casters, ensuring smooth mobility and adaptability to various workspaces. Rear casters feature a lock brake for enhanced safety and stability when needed.
- Forklift pockets (for transporting only)

Includes

Floor-Anchor Mounting Bolt Kit: Enhance the stability and safety of your OZ Wheel Base with optional floor-anchoring bolts, ensuring secure attachment to the ground for added peace of mind during operation. Includes four (4) 12" zinc-plated hex head bolts and washers. *Concrete anchor not included.*

Davit Crane Locking Collar: This component effectively prevents the crane boom from rotating excessively, eliminating the risk of tipping hazards and ensuring a secure lifting environment. *Included with models OZWB1, OZWB1-TP, OZWB2, OZWB2-TP, and OZWB3.*

Toolbox Storage Tube: Keep your tools and Wheel Base accessories organized with this durable and versatile toolbox storage tube, molded from high-density polypropylene and featuring a secure screw-cap and latch closure for secure storage. Zip ties are included for convenient, versatile mounting.

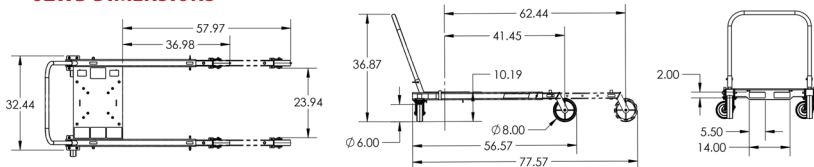
**Davit crane sold separately*

Patent-Pending Floor-Anchoring System with Locking Collar

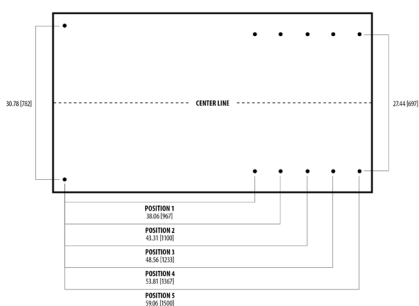


- OZWB** Wheel Base for OZ Lifting Products davit cranes up to 1200 lb. capacity (pedestal base and locking collar not included)
- OZWB1** Wheel Base for use with OZ1200DAV davit crane (pedestal base and locking collar included)
- OZWB1-TP** Wheel Base for use with OZTP1200DAV, OZA1000DAV, OZXR1000DAV davit cranes (pedestal base and locking collar included)
- OZWB2** Wheel Base for use with OZ1000DAV and OZCF1200DAV davit cranes (pedestal base and locking collar included)
- OZWB2-TP** Wheel Base for use with OZTP500DAV davit crane (pedestal base and locking collar included)
- OZWB3** Wheel Base for use with OZ500DAV, OZA500DAV and OZXR500DAV davit cranes (pedestal base and locking collar included)

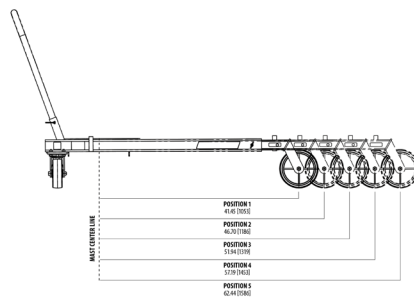
OZWB DIMENSIONS



ADJUSTABLE LEG EXTENSIONS



FLOOR-ANCHORING SYSTEM



OZWB DAVIT CRANE REACH DIAMETER

Sections are representative of hook reach in 360-degrees

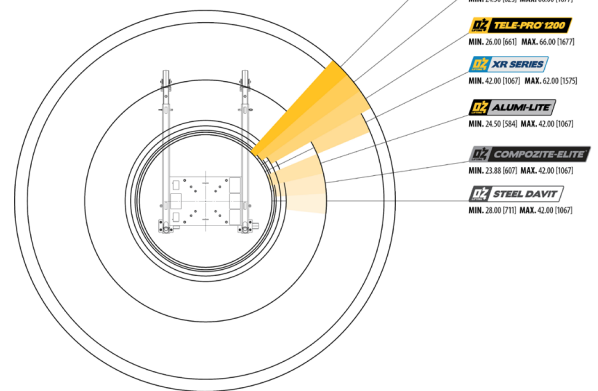
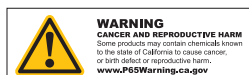


Diagram dimensional values are provided in inches. Bracketed values [] within diagram represent equivalent measurements in millimeters for informational purposes only. Dimensions and illustrations are for reference only and subject to change without notice.



WIRE/SYNTHETIC ROPE ASSEMBLIES

Steel Wire Rope (For manual winch)

OZGAL.19-80B	3/16" x 80'	Galvanized cable assembly
OZSS.19-80B	3/16" x 80'	Stainless steel cable assembly
OZGAL.25-55B	1/4" x 55'	Galvanized cable assembly
OZSS.25-55B	1/4" x 55'	Stainless steel cable assembly

Above cable assemblies come with swaged ball and swivel hook with latch.

Custom cable length available.

3/16" - 80 ft. max. length • 1/4" - 55 ft. max. length

Steel Wire Rope (For manual and power winch)

OZGAL.19-90	3/16" x 90'	Galvanized cable assembly
OZSS.19-90	3/16" x 90'	Stainless steel cable assembly
OZGAL.25-45	1/4" x 45'	Galvanized cable assembly
OZSS.25-45	1/4" x 45'	Stainless Steel cable assembly

All cable assemblies come with a swivel hook with latch.

Custom cable length available.

3/16" - 90 ft. max. length • 1/4" - 45 ft. max. length

Synthetic Rope

OZSR.19-15	3/16" x 15'	Synthetic Rope
OZSR.19-50	3/16" x 50'	Synthetic Rope
OZSR.19-90	3/16" x 90'	Synthetic Rope
OZSR.25-50	1/4" x 50'	Synthetic Rope
OZSR.25-75	1/4" x 75'	Synthetic Rope
OZSR.31-45	5/16" x 45'	Synthetic Rope

All synthetic rope assemblies come with looped ends and pre-installed swivel hook with latch



HEADACHE BALL

OZHB10

Keeps your wire rope tensioned even when lowering the hook with no load. Compatible with 3/16" and 1/4" wire rope assemblies. Headache balls sold separately from all davit cranes and wire rope assemblies.



WIRE ROPE HOLDER

OZWRH

Secure your davit crane's wire rope with our durable and easy-to-use wire rope holder. For use with 3/16" and 1/4" ball end wire rope.



WINCH COVER

OZECW



This weatherproof winch cover provides additional protection, keeping your electric winch clean, dry, and looking new. It is specially treated for cold weather use and is made from strong, water-resistant, black vinyl, featuring drawstring for quick closure and cable opening for easy installation. Made in the USA.





DAVIT CRANE COVER

OZDAV-C1

Protect your davit crane from the elements with this waterproof cover. Compatible with all OZ Lifting Products davit cranes 1200 lb. capacity or less excluding the XR series.



DAVIT CRANE MAST EXTENSION

OZEXT1-COMP, OZEXT1-TP, OZEXT2, OZEXT2-TP

Increase the height of your davit crane with our durable and easy-to-install mast extender. This extender is made of high-strength steel and is available in a variety of lengths to fit most davit cranes. Add 24 inches of additional height to your davit crane with this simple and effective solution.



DAVIT CRANE LOCKING COLLAR

TP500-LC, TP1200-LC, SCF-LC

Keep your davit crane secure and prevent accidental rotation with our durable and easy-to-use locking collar.



DAVIT CRANE ROLLER BAG

OZRB1

The OZ Lifting Products davit crane roller bag is a durable and convenient way to transport and protect your davit crane. Made of heavy-duty nylon, the bag features a padded interior and reinforced straps to keep your crane safe from scratches and dings. Plus, the convenient roller wheels make it easy to move your crane around. The bag also has a large capacity, so you can easily fit all of your crane's accessories inside.

