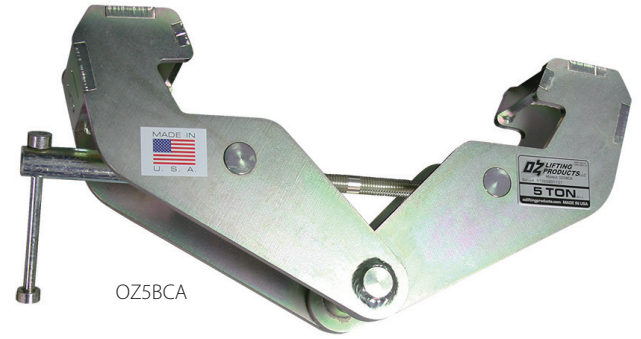
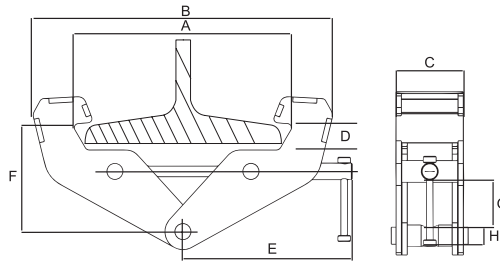


## Features

- Robust all-steel fully-welded construction
- Super-quick adjustment to fit most I-Beams (see measurements below)
- ROHS compliant zinc plated finish
- Permanent engraved load rating
- Individual test certificate and serial number
- Made in USA

**Standards - ASME/ANSI B30.16,  
BTH-1 Design Category B Service Class 0**

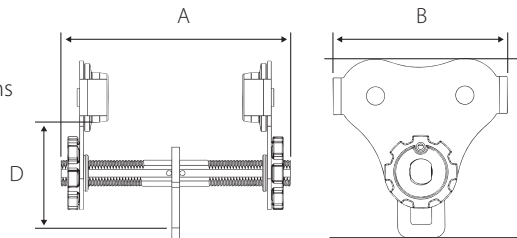


	OZ1BCA	OZ2BCA	OZ3BCA	OZ5BCA	OZ10BCA
Capacity (tons)	1	2	3	5	10
A	3 – 9	3 – 9	3.5 – 13	3.5 – 13	3.5 – 13
B	14.75	14.75	20.5	20.5	22
C	2.51	2.91	3.94	4.41	4.72
Dimensions (in)					
D	0.9	0.9	1.5	1.5	1.5
E	9.5	9.5	11	11	11.5
F	4.75 – 5.75	4.75 – 5.75	7.5 – 9	7.5 – 9	5.5 – 9.375
G	1.75	1.75	2.5	2.5	4
H	.75	.875	.975	1.125	1.625
Net Weight (lb.)	9	11	22	26	39

# PUSH BEAM TROLLEY USA

## Features

- Fastest adjusting trolley requiring no tools to install
- Lightweight robust construction
- ROHS compliant zinc plated finish
- Glow in the dark decals
- Universal wheel tread fits most I, S, and W-Beams
- Precision ball bearing trolley wheels
- Side plates protect trolley wheels
- Anti-drop plate
- Individual test certificate and serial number
- Made in USA



OZ1PBTA  
[PATENTED]

**Standards - ASME/ANSI B30.17**

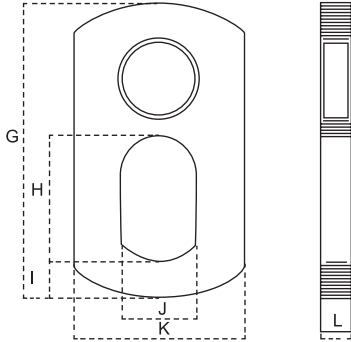
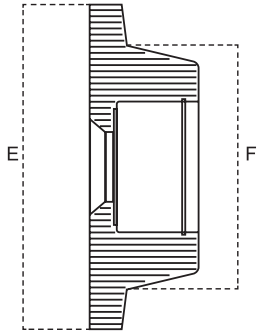


	OZ05PBTA	OZ05PBTA-12	OZ05PBTA-16	OZ1PBTA	OZ1PBTA-12	OZ1PBTA-16	OZ2PBTA	OZ3PBTA
Capacity (tons)	.5	5	5	1	1	1	2	3
Adjustable flange width (in)	2.52-8.00	2.52-12.00	2.52-16.00	2.75-8.00	2.75-12.00	2.75-16.00	3.75-8.00	3.75-8.00
Max Flange Thickness (in)	1.12	1.12	1.12	1	1	1	1.5	1.75
Product dimensions								
A	12.25	15.5	19.5	11	15.5	19.5	14	14
B	8.3	8.3	8.3	10.2	10.2	10.2	12	15.4
C	8.5	8.5	8.5	9.8	9.8	9.8	11.9	14
D	5	5	5	5.5	5.5	5.5	8.5	9.87
Minimum radius curve (ft)	2.75	2.75	2.75	3.35	3.35	3.35	4.5	5
Net weight (lb.)	16	19	20	26	30	31	45	80



**See wheel and bail dimensions on next page**  
Dimensions and illustrations are for reference only and subject to change without notice.

# PUSH BEAM TROLLEY WHEELS & BAIL DIMENSIONS



## USA

	OZ05PBTA	OZ1PBTA	OZ2PBTA	OZ3PBTA
E (in)	3.25	4.00	4.5	5.75
F (in)	2.38	3.00	3.25	4.38
G (in)	4.38	5.00	6.25	6.88
H (in)	1.50	1.88	2.25	2.5
I (in)	0.63	0.63	0.88	1.0
J (in)	1.00	1.25	1.38	1.5
K (in)	2.25	2.50	3.13	3.5
L (in)	0.38	0.50	0.50	0.63

## Import

	OZ025PBT	OZ05PBT	OZ1PBT	OZ2PBT	OZ3PBT	OZ5PBT	OZ10PBT
E (in)	2.56	2.83	3.50	4.53	5.51	6.06	6.91
F (in)	1.77	2.05	2.48	3.35	4.13	4.60	5.24
G (in)	3.27	4.06	4.21	5.43	6.50	7.87	7.68
H (in)	1.18	1.52	1.52	2.24	2.68	3.15	4.49
I (in)	0.59	0.75	0.75	0.83	1.02	1.44	1.91
J (in)	0.94	1.26	1.26	1.34	1.65	1.89	3.35
K (in)	1.65	2.24	2.24	3.15	3.74	4.33	11.22
L (in)	0.24	0.31	0.39	0.47	0.16	0.71	0.79



**WARNING**  
**CANCER AND REPRODUCTIVE HARM**  
 Some products may contain chemicals known  
 to the State of California to cause cancer,  
 or birth defect or reproductive harm.  
[www.P65Warning.ca.gov](http://www.P65Warning.ca.gov)

Dimensions and illustrations are for reference only and subject to change without notice.

