

LIFTING PRODUCTS



 **PREMIUM**

 **INDUSTRIAL**

 **DYNO-HOIST**

 **ELECTRIC
SERIES**

 **COMPOZITE-ELITE**

 **CLAMPS & TROLLEYS**

 **FALL PROTECTION**

 **TELE-PRO**

 **XR SERIES**

 **STEEL DAVIT**

 **COMPOZITE**

 **ALUMI-LITE**

 **WHEEL BASE**

 **SPARK RESISTANT
SERIES**

 **STAINLESS
SERIES**



OZ Lifting Products®, LLC is headquartered and warehoused in Winona, Minnesota. We have a long standing dedication to excellent customer service and support. We are committed to designing and manufacturing high quality and long lasting lifting products and solutions. Our lifting equipment has been successfully handling material globally for years. We serve many industries including oil, gas, automotive, aviation, construction and mining. Our products have provided safe lifting solutions in demanding applications for over 19 years.

MEMBERSHIPS

- AWRF** Associated Wire Rope Fabricators
- AGC** Associated General Contractors of America
- MHI** Material Handling Institute
- NFIB** National Federation of Independent Business
- NSC** National Safety Council
- WEF** Water Environment Federation
- WSTDA** Web Sling and Tie Down Association
- WACC** Winona Area Chamber of Commerce

CONFORMITY & SAFETY STANDARDS

- ANSI** American National Standards Institute
- AS** Standards Australia
- ASME** American Society of Mechanical Engineers
- CE** Conformité Européenne
- OSHA** Occupational Safety and Health Administration

PRODUCT INDEX

- Premium Lever HoistPg. 4
- Premium Chain HoistPg. 6
- Industrial Lever HoistPg. 8
- Industrial Chain HoistPg. 9
- Stainless Lever Hoist.Pg. 10
- Stainless Chain HoistPg. 11
- Stainless Beam Clamp & Trolley. . .Pg. 12
- Spark Resistant Chain HoistPg. 13
- Spark Resistant Beam Trolley.Pg. 14
- Dyno-HoistPg. 15
- Fall Protection USA Clamp & Trolley Pg. 16
- USA Beam Clamp & Trolley.Pg. 17
- Beam Clamp & TrolleysPg. 18
- Quick Adjust TrolleyPg. 19
- Geared Beam Trolley.Pg. 20
- Electric Chain HoistPg. 21

- Electric Builder’s Hoist.Pg. 22
- Wireless AdaptersPg. 23
- Electric Series AccessoriesPg. 24
- Manual WinchesPg. 27
- Electric WinchesPg. 28
- Alumi-Lite® Davit Crane.Pg. 29
- XR Series Davit CranePg. 31
- Tele-Pro® Davit CranePg. 32
- CompOZite® Davit Crane.Pg. 35
- Steel Davit CranePg. 37
- CompOZite Elite® Davit Crane. . . .Pg. 39
- Wheel BasePg. 40
- Davit Application Sheet.Pg. 41
- Wire/Synthetic Rope Assemblies . .Pg. 42
- Davit Accessories.Pg. 42-43



WHY OZ LIFTING PRODUCTS®?



Service

From the first phone call to service after the sale, we carefully manage all aspects of your order. Our standard product can be quoted immediately allowing us to get you the product you need, when you need it. Customer satisfaction is our number one priority. Our team is committed to providing you the service you deserve.



No Order Minimums

No required minimum quantity orders.



Quick Ship

Our quick ship program contains our most common items, many of which are used in the building and construction industries where quick turnaround solutions are required. In-stock items ship in 2-3 business days with same day shipping available by request and with an additional fee.



Made in the USA

We offer a full range of new and innovative lifting products designed and manufactured in the United States.



Tested in the USA

At OZ Lifting Products®, our customers expect products that have endured advanced testing and rigorous inspection to ensure many years of operation. Our quality control and testing is unmatched. Our products meet and exceed expectations in regards to safety, performance, durability and customer satisfaction. Our products adhere to the ASME, ANSI, AS, OSHA and CE standards keeping you and your equipment safe.



Test Certificate

A test certificate is included with each product and ensures the product has been load tested. An individual serial number provides complete traceability throughout the manufacturing process.



Overload Protected

Our overload protection is standard on all of our premium hoists and select electric series models. The overload protection is integral to the product and prevents the operator from overloading the hoist. The overload resets itself and the hoist can go right back into service. Every product featuring overload is tested at our facility in Minnesota by certified OZ technicians to guarantee product performance.



Custom Length of Lift

We offer custom lengths of lifts on all of our products. Standard or custom length, we have a solution.



Parts

Replacement parts are available for most OZ products. Please use our parts request form at www.ozliftingproducts.com/parts.



Patented



Trademark



Warranty

PREMIUM LEVER HOIST WITH OVERLOAD PROTECTION



Features

Standard Overload Protection – Overload Protection prevents the operator from exceeding the limitations of the hoist and is set at a minimum of 40% over the rated load.

Free Wheel Feature – When not under load, the operator can disengage the gearing by positioning the selection switch to the center position. This allows for a quick adjustment of chain for faster operation.

Lifting or Pulling – Can be used for lifting or pulling which makes it a more versatile tool.

Minimal Load Lifting Effort – Double reduction gearing provides easy operation with minimal lifting effort.

360-Degree Handle Rotation – Allows the operator to work in confined spaces.

All-Steel Construction – Featuring a long lasting powder coat finish, the all-steel construction ensures durable protection while providing a long and dependable service life in harsh environments.

Weston-Style Brake System – An enclosed and protected Weston-Style load brake stays clean and dry during the entire load operation. Also equipped with a unique twin pawl design for additional reliability.

Enclosed Gearing – Gears are protected from contamination and debris.

Fully-Enclosed Lift Wheel – Maintains smooth operation while distributing the load over more links of chain. It also helps keep debris from contaminating the lift wheel and self-cleans the chain as it enters the wheel.

Sealed Roller Bearing – This feature provides smooth, controlled operation of the gears and shafts. This ensures maintenance-free lubrication.

Steel Handle with Rubber Grip – Provides a non-slip, sure-grip surface.

Forged Hooks – Forged alloy steel hooks swivel 360° for easier attachment and positioning.

Cast steel safety latches – Heavy-duty, cast-steel safety latch has a bolt-and-lock nut connection. This feature simplifies changing latches in the field.

Zinc-Plated Chain – Provides a durable non-oily finish.

Stainless Steel Riveted ID Tags – Made from stainless steel the ID tag is corrosion resistant.

Maintenance – Hoists can be quickly disassembled for fast and easy maintenance. See the videos and maintenance breakdown animations at OZLiftingProducts.com.

Standard Lift Lengths – 5,10,15, and 20 ft. Custom lengths available upon request.

Safety Hooks & Shipyard Hooks – Available for 1.5 and 3 Ton Lever Hoists.

Individual test certificates & serial numbers.

Standards – CE, ASME/ANSI B30.21, AS1418.2



**WARNING
CANCER AND REPRODUCTIVE HARM**
Some products may contain chemicals known to the state of California to cause cancer, or birth defect or reproductive harm.
www.P65Warning.ca.gov

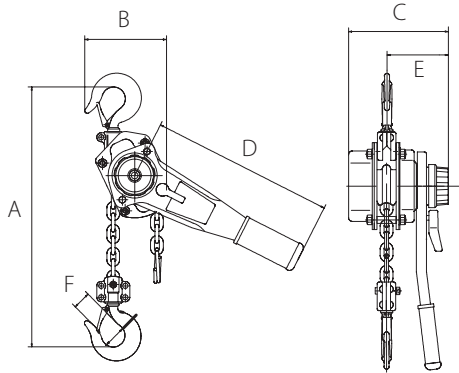


**OVERLOAD
PROTECTED**

**FREE
SPARE SET
OF LATCHES**

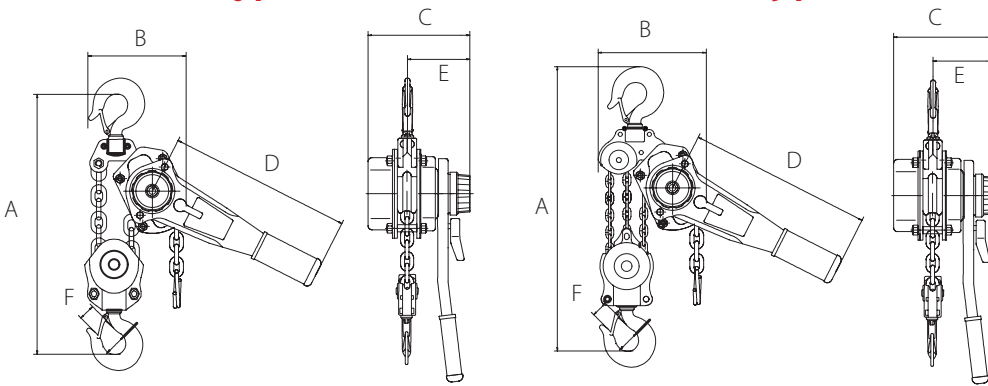
OZ075-10LHOP

.75, 1.5, 3T



6T

9T



OZ600-15LHOP

| | | OZ075-XXLHOP | OZ150-XXLHOP | OZ300-XXLHOP | OZ600-XXLHOP | OZ900-XXLHOP |
|---|---|--------------|--------------|--------------|--------------|--------------|
| Capacity (tons) | | 0.75 | 1.5 | 3 | 6 | 9 |
| Headroom (in) | | 12.79 | 14.96 | 18.90 | 24.41 | 27.56 |
| Effort on lever to lift full load (lb.) | | 30.86 | 48.50 | 70.55 | 74.96 | 79.37 |
| Falls of Chain | | 1 | 1 | 1 | 2 | 3 |
| Diameter of Load Chain (mm) | | 6x18 | 8x24 | 10x30 | 10x30 | 10x30 |
| Length of Lever Handle (in) | | 11.02 | 16.14 | 16.14 | 16.14 | 16.14 |
| Dimensional Information (in) | A | 12.79 | 14.96 | 18.89 | 24.40 | 27.55 |
| | B | 5.35 | 6.29 | 7.08 | 9.25 | 12.44 |
| | C | 5.82 | 6.77 | 7.87 | 7.87 | 7.87 |
| | D | 12.2 | 16.14 | 16.14 | 16.14 | 16.14 |
| | E | 3.54 | 3.85 | 4.52 | 4.52 | 4.52 |
| Hook-opening, Upper & Lower (in) | F | 1.18 | 1.26 | 1.50 | 1.89 | 2.13 |
| Net Weight of Head Only (lb.) | | 13 | 22 | 33 | 51 | 81 |

Standard Lift Lengths: 5, 10, 15, and 20 ft. We also do custom rigging

Dimensions & illustrations are for reference only and subject to change without notice. XX in hoist model number indicates length of lift by foot.



PREMIUM CHAIN HOIST WITH OVERLOAD PROTECTION



Features

Standard Overload Protection – Overload Protection prevents the operator from exceeding the limitations of the hoist and is set at a minimum of 40% over the rated load.

Lifting or Pulling – Can be used for lifting or pulling which makes it a more versatile tool.

Minimal Load Lifting Effort – Double reduction gearing provides easy operation with minimal lifting effort.

Unique Hand Wheel Design – This feature enables the hand chain to successfully feed directly into the wheel sprocket from many directions and angles. Thus, the operator can use the hoist while standing to the side of, or even above the load without fear of the hand chain jamming.

All-Steel Construction – Featuring a long lasting powder coat finish, the all-steel construction ensures durable protection while providing a long and dependable service life in harsh environments.

Weston-Style Brake System – An enclosed and protected Weston-Style load brake stays clean and dry during the entire load operation. Also equipped with a unique twin pawl design for additional reliability.

Enclosed Gearing – Gears are protected from contamination and debris.

Sealed Roller Bearing – This feature provides smooth, controlled operation of the gears and shafts. This ensures maintenance-free lubrication.

Forged Hooks – Forged alloy steel hooks swivel 360° for easier attachment and positioning.

Thrust Bearing on Lower Hook – Allows easy rotation of load while suspended and prevents load chain twisting.

Cast steel safety latches – Heavy-duty, cast-steel safety latch has a bolt-and-lock nut connection. This feature simplifies changing latches in the field.

100% load tested Zinc-Plated Chain – Provides a durable non-oily finish.

Stainless Steel Riveted ID Tags – Made from stainless steel the ID tag is corrosion resistant.

Maintenance – Hoists can be quickly disassembled for fast and easy maintenance. See the videos and maintenance breakdown animations at OZLiftingProducts.com.

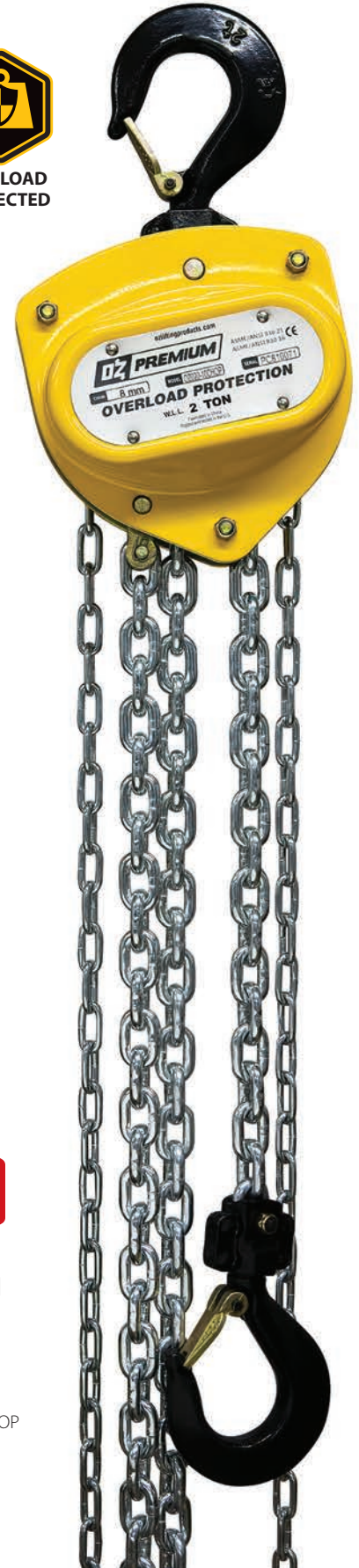
Standard Lift Lengths – 10,15, and 20 ft. Custom lengths available upon request.

Individual test certificates & serial numbers.

Standards – CE, ASME/ANSI B30.16, AS1418.2



OVERLOAD
PROTECTED



FREE
SPARE SET
OF LATCHES

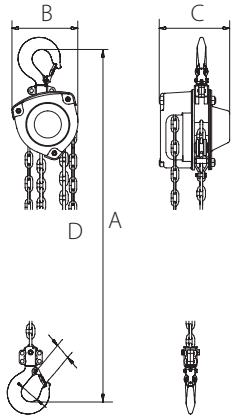


OZ020-10CHOP

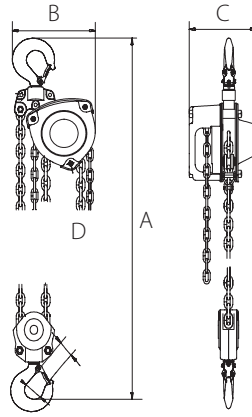


WARNING
CANCER AND REPRODUCTIVE HARM
Some products may contain chemicals known
to the State of California to cause cancer,
or birth defect or reproductive harm.
www.P65Warning.ca.gov

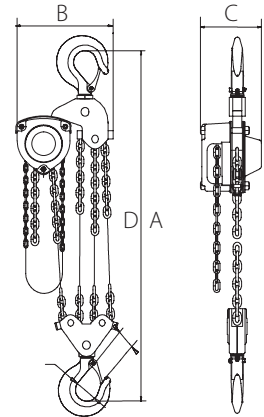
.5,1,1.5,2T



3,5T

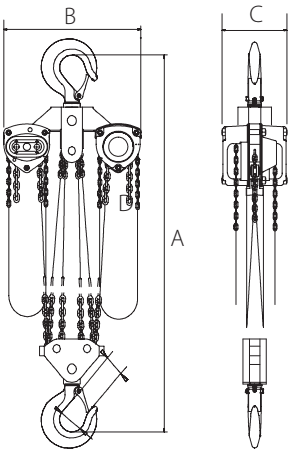


10T



| | OZ005-XXCHOP | OZ010-XXCHOP | OZ015-XXCHOP | OZ020-XXCHOP | OZ030-XXCHOP | OZ050-XXCHOP | OZ100-XXCHOP |
|----------------------------------|--------------|--------------|--------------|--------------|--------------|--------------|--------------|
| Capacity (tons) | .5 | 1 | 1.5 | 2 | 3 | 5 | 10 |
| Falls of Chain | 1 | 1 | 1 | 1 | 2 | 2 | 4 |
| Effort to Lift S.W.L. (lb.) | 53 | 55 | 58 | 74 | 58 | 79 | 84 |
| Loadchain Diameter (mm) | 6x18 | 6x18 | 8x24 | 8x24 | 8x24 | 10x30 | 10x30 |
| Dimensional Information (in) | A | 13.58 | 14.80 | 17.40 | 18.50 | 19.29 | 30.12 |
| | B | 5.83 | 6.77 | 7.72 | 8.28 | 8.90 | 18.23 |
| | C | 5.20 | 5.94 | 6.81 | 6.89 | 6.81 | 7.44 |
| Hook-opening, Upper & Lower (in) | D | 1.10 | 1.26 | 1.42 | 1.42 | 1.81 | 2.24 |
| Net Weight of Head Only (lb.) | 21 | 24 | 31 | 36 | 41 | 64 | 114 |

20, 30 T



| | OZ200-XXCHOP | OZ300-XXCHOP |
|----------------------------------|--------------|--------------|
| Capacity (tons) | 20 | 30 |
| Falls of Chain | 8 | 12 |
| Effort to Lift S.W.L. (lb.) | 84 x2 | 90 x2 |
| Load Chain Diameter (mm) | 10 | 10 |
| Dimensions (in) | A | 35.04 |
| | B | 24.80 |
| | C | 7.44 |
| Hook-opening, Upper & Lower (in) | D | 2.23 |
| Net Weight of Head Only (lb.) | 315 | 360 |

OZ200-10CHOP



Standard Lift: 10 and 20 ft. We also do custom rigging

50, 60 and 100 Ton models available by special order only. Please contact for specifications.
 37' Max length on 20T, 26' Max length on 30T
 Dimensions & illustrations are for reference only and subject to change without notice.
 XX in hoist model number indicates length of lift by foot.



Dimensions & illustrations are for reference only and subject to change without notice.

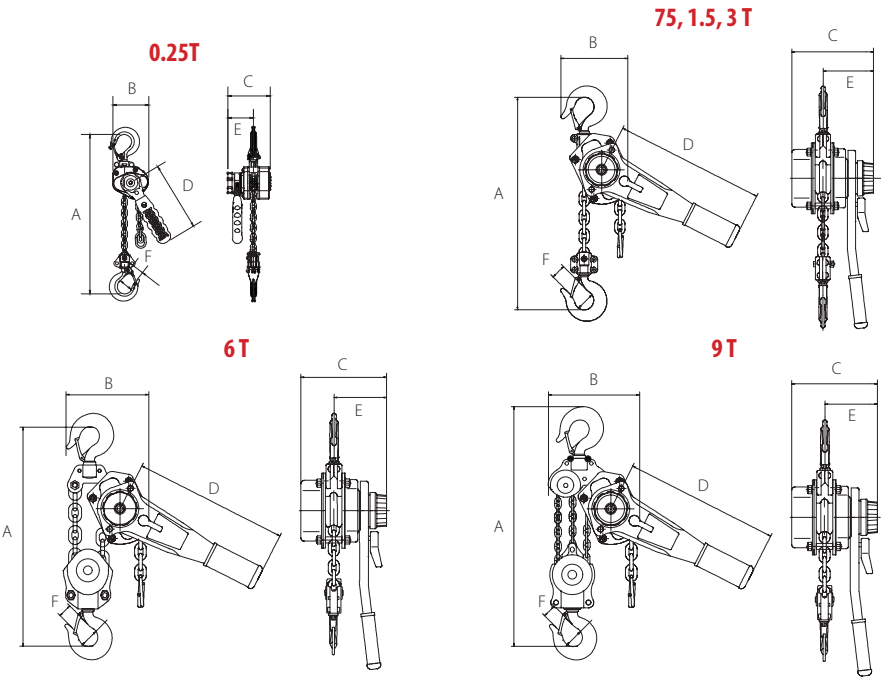
INDUSTRIAL LEVER HOIST



Features

- All-steel construction
- Aluminum construction (¼ Ton Model)
- Long lasting powder coat finish
- Steel handle with rubber grip
- Minimal load lifting effort
- Weston-Style brake system with twin pawl design
- Zinc plated load chain
- Fully-enclosed gearing
- Load sheave bearings
- Forged alloy steel hooks
- Heavy-duty latches
- Carrying bag (¼ Ton Model)
- Individual test certificates & serial numbers

Standards - CE, ASME/ANSI B30.21, AS1418.2



| | OZIND025-XXLH | OZIND075-XXLH | OZIND150-XXLH | OZIND300-XXLH | OZIND600-XXLH | OZIND900-XXLH |
|-----------------------------|---------------|---------------|---------------|---------------|---------------|---------------|
| Capacity (tons) | 0.25 | 0.75 | 1.5 | 3 | 6 | 9 |
| Effort to Lift S.W.L. (lb.) | 44 | 31.4 | 49.5 | 72 | 76.5 | 81 |
| Falls of Chain | 1 | 1 | 1 | 1 | 2 | 3 |
| Load Chain Diameter (mm) | 4x12 | 6x18 | 8x24 | 10x30 | 10x30 | 10x30 |
| Product Dimensions (in) | A | 9.45 | 13.38 | 16.14 | 20.07 | 24.41 |
| | B | 3.62 | 5.31 | 5.91 | 8.27 | 9.53 |
| | C | 3.86 | 5.71 | 6.89 | 7.68 | 7.68 |
| | D | 6.3 | 12.2 | 16.14 | 16.14 | 16.14 |
| | E | 2.36 | 3.39 | 3.94 | 4.53 | 4.53 |
| Hook-opening, Upper & Lower | F | 0.83 | 1.18 | 1.26 | 1.50 | 1.89 |
| Net Weight (lb.) | 4 | 12 | 20 | 36 | 55 | 89 |

Standard Lift: 5, 10, 15 and 20 ft.

.25 T Models Standard Lift: 5 and 10 ft. We also do custom rigging

Dimensions and illustrations are for reference only and subject to change without notice.
XX in hoist model number indicates length of lift by foot.



WARNING
CANCER AND REPRODUCTIVE HARM
 Some products may contain chemicals known to the state of California to cause cancer, or birth defect or reproductive harm.
www.P65Warning.ca.gov

OZIND075-10LH

**FREE
SPARE SET
OF LATCHES**

Excludes
¼ Ton Model

OZIND025-5LH



INDUSTRIAL CHAIN HOIST



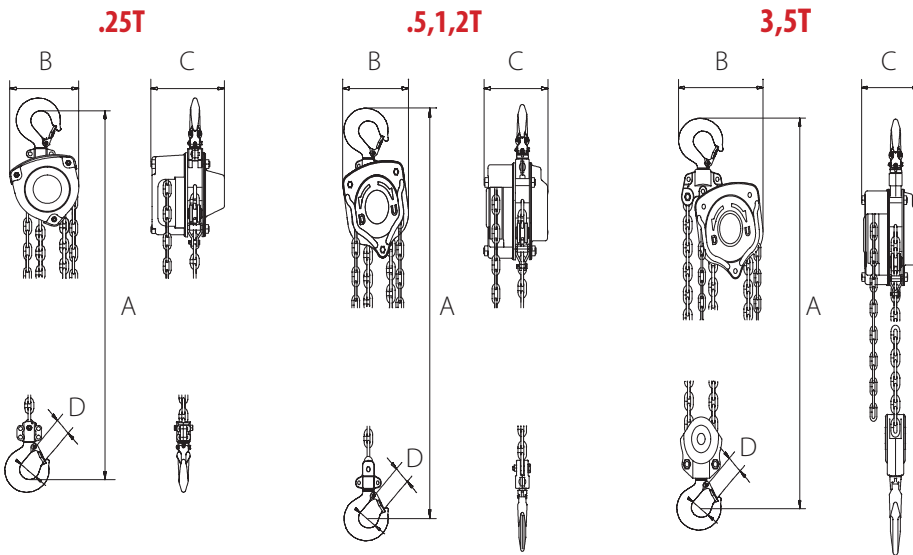
Features

- All-steel construction
- Long lasting powder coat finish
- Minimal load lifting effort
- Weston-Style brake system with twin pawl design
- Zinc plated load chain & hand chain
- Fully-enclosed gearing
- Load sheave bearings
- Forged alloy steel hooks
- Thrust bearing on lower hook
- Heavy-duty latches
- Individual test certificates & serial numbers



Excludes
¼ Ton Model

Standards - CE, ASME/ANSI B30.16 and AS1418.2



| | OZIND025-XXCH | OZIND005-XXCH | OZIND010-XXCH | OZIND020-XXCH | OZIND030-XXCH | OZIND050-XXCH | |
|-----------------------------|---------------|---------------|---------------|---------------|---------------|---------------|-----|
| Capacity (tons) | 0.25 | 0.5 | 1 | 2 | 3 | 5 | |
| Effort to Lift S.W.L. (lb.) | 55 | 55 | 66 | 88 | 88 | 88 | |
| Falls of Chain | 1 | 1 | 1 | 1 | 2 | 2 | |
| Load Chain Diameter (mm) | 4x12 | 5x15 | 6x18 | 8x24 | 8x24 | 10x30 | |
| Product Dimensions (in) | A | 10.2 | 12.8 | 14.6 | 17.5 | 26.8 | |
| | B | 4.18 | 5.35 | 5.75 | 7.32 | 10.2 | |
| | C | 4.02 | 5.2 | 5.98 | 6.14 | 6.1 | 7.4 |
| Hook-opening, Upper & Lower | D | 1.3 | 1.38 | 1.73 | 2 | 2.28 | 2.6 |
| Net Weight (lb.) | 4 | 10 | 16 | 19 | 30 | 56.2 | |

Standard Lift: 10, 15 and 20 ft.

.25 T Models Standard Lift: 5 and 10 ft. We also do custom rigging

Dimensions and illustrations are for reference only and subject to change without notice. XX in hoist model number indicates length of lift by foot.



OZIND020-10CH



STAINLESS STEEL LEVER HOIST



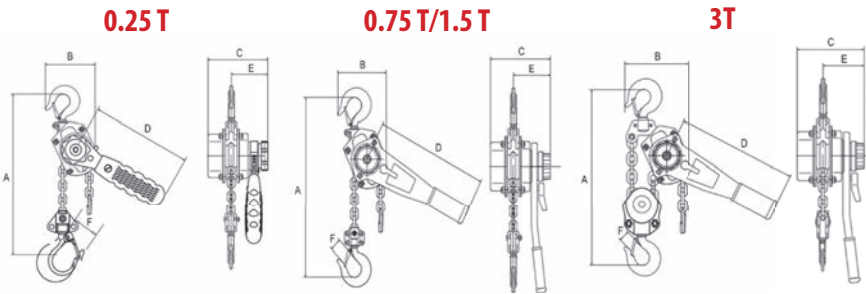
This reliable solution tackles lifting tasks in demanding environments. Available in capacities ranging from 0.25 to 3 tons, the OZ Lifting Product's Stainless Steel Lever Hoist delivers smooth operation even after extended periods of inactivity exposed to harsh, corrosive conditions. Constructed from Type 304 stainless steel, the hoist boasts exceptional corrosion-resistance, ensuring long-lasting performance. Enclosed gearing protects internal components from dust and debris, while the Weston-style braking system guarantees secure load control and operator safety. This makes this the ideal for wastewater treatment plants, pharmaceutical and food production, oil refineries, and mining operations.

Features

- Type 304 Stainless Steel Construction
- Food-Grade Grease That Meets NSF H1 Standards
- Enclosed Gearing
- Twin Pawl Design
- Sealed Roller Bearing
- Weston-Style Brake System
- Ergonomic Handle with Rubber Grip
- 360-Degree Handle Rotation
- Free Wheel Feature Allows For Quick Adjustment
- Designed For Lifting or Pulling
- Minimal Load Lifting Effort
- Forged Hooks
- Stainless Steel Riveted ID Tags
- Quick Disassembly for Fast & Easy Maintenance

**FREE
SPARE SET
OF LATCHES**

Standards - CE, ASME/ANSI B30.21, ASME/ANSI B30.16, AS1418.2, NSF H1



| | OZSS025-XXLH | OZSS075-XXLH | OZSS150-XXLH | OZSS300-XXLH |
|---|----------------|----------------|----------------|----------------|
| Capacity - tons | 0.25 | 0.75 | 1.5 | 3.0 |
| Headroom - in (mm) | 11.22 (284.99) | 14.96 (379.98) | 16.73 (424.94) | 19.76 (501.90) |
| Effort on Lever to Lift Full Load - lb (kg) | 20.20 (9.18) | 28.10 (12.77) | 41.50 (18.86) | 42.70 (19.41) |
| Falls of Chain | 1 | 1 | 1 | 2 |
| Load Chain Diameter - in (mm) | 0.16 (4.00) | 0.24 (6.00) | 0.31 (8.00) | 0.31 (8.00) |
| Dimensional Information - in (mm) | | | | |
| A | 11.22 (284.99) | 14.96 (379.98) | 16.73 (424.94) | 19.76 (501.90) |
| B | 3.86 (98.04) | 5.83 (148.08) | 5.91 (150.11) | 7.68 (195.07) |
| C | 3.94 (100.08) | 5.67 (146.30) | 6.61 (167.89) | 6.61 (167.89) |
| D | 6.10 (154.94) | 11.42 (290.07) | 16.34 (415.04) | 16.34 (415.04) |
| E | 2.40 (60.96) | 3.43 (87.12) | 3.74 (95.00) | 3.74 (95.00) |
| Hook-opening, upper & lower - in (mm) | F | | | |
| F | 0.92 (23.37) | 1.21 (30.73) | 1.38 (35.05) | 1.52 (38.61) |
| Net Weight of Head Only - lb (kg) | 4.84 (2.20) | 12.54 (5.70) | 20.35 (9.25) | 28.71 (13.05) |

OZSS075-XXLH

Standard Lift: 5, 10, 15, 20 ft. We also do custom rigging

Dimensions and illustrations are for reference only and subject to change without notice. XX in hoist model number indicates length of lift by foot.



STAINLESS STEEL CHAIN HOIST

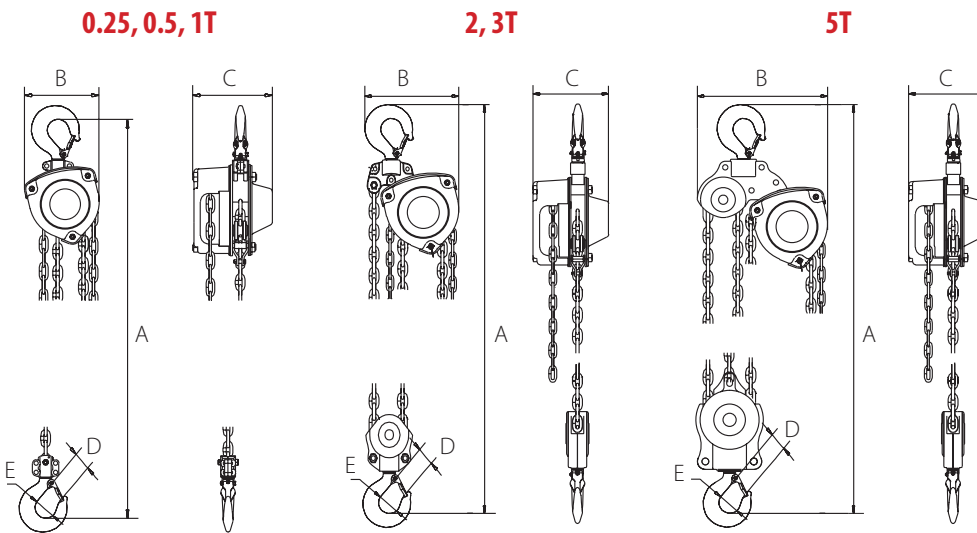


Features

- Stainless Steel Type 304 Construction for Corrosion Resistance
- Fully Enclosed Gearing
- Fully Machined Lift Wheel
- Designed for Lifting or Pulling
- Minimal Load Lifting Effort
- Individual Test Certificate and Serial Number
- Forged Stainless Steel Hooks and Safety Latches
- Stainless Steel Hand & Load Chain
- Weather Proof Load Holding Brake
- All Gears and Shafts Run on Roller Bearings
- Stainless Steel Riveted ID Tags
- Low Headroom
- Food grade gearbox lubrication

FREE SPARE SET OF LATCHES

Standards - CE, ASME/ANSI B30.21, ASME/ANSI B30.16, AS1418.2



| | OZSS0025-XXCH | OZSS005-XXCH | OZSS010-XXCH | OZSS020-XXCH | OZSS030-XXCH | OZSS050-XXCH | |
|-------------------------------|---------------|--------------|--------------|--------------|--------------|--------------|------|
| Capacity (tons) | 0.25 | 0.5 | 1 | 2 | 3 | 5 | |
| Falls of Chain | 1 | 1 | 1 | 2 | 2 | 3 | |
| Effort to Lift S.W.L. (lb.) | 45 | 67 | 67 | 74 | 74 | 74 | |
| Loadchain Diameter (mm) | 4x12 | 7x21 | 7x21 | 7x21 | 9x27 | 9x27 | |
| Dimensional Information (in) | A | 9.84 | 14.8 | 14.8 | 16.73 | 27.95 | |
| | B | 4.29 | 6.77 | 6.77 | 7.56 | 14.37 | |
| | C | 4.13 | 5.94 | 5.94 | 5.94 | 6.81 | 7.44 |
| Hook-opening, upper & lower | D | 1.06 | 1.02 | 1.02 | 1.33 | 1.53 | 1.61 |
| | E | 1.26 | 1.57 | 1.57 | 1.96 | 2.16 | 2.55 |
| Net Weight of Head Only (lb.) | 8.82 | 16.3 | 16.3 | 22.9 | 34.7 | 66.1 | |

Standard Lift: 10, 15, 20, 30 ft. We also do custom rigging

Dimensions and illustrations are for reference only and subject to change without notice. XX in hoist model number indicates length of lift by foot.



OZSS030-5CH



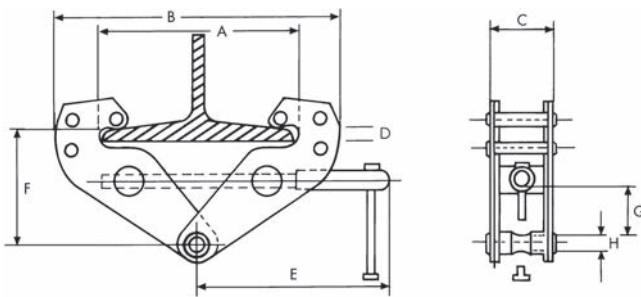
STAINLESS STEEL BEAM CLAMP



Features

- Stainless Steel Type 304 Construction for Corrosion Resistance
- Super-Quick Adjustment to most I-Beams
- Stainless Steel I.D. Tag
- Individual Test Certificate and Serial Number

Standards - CE, ASME/ANSI B30.16, AS4991 (For use with manual or powered hoists)



| | OZSS1BC | OZSS2BC | OZSS3BC | OZSS5BC |
|------------------|-----------|-----------|-----------|-----------|
| Capacity (tons) | 1 | 2 | 3 | 5 |
| A | 2.95-9.05 | 2.95-9.05 | 3.15-12.6 | 3.15-12.6 |
| B | 12.2 max. | 12.2 max. | 17.7 max. | 17.9 max. |
| C | 2.6 | 3 | 4 | 4.4 |
| D | .94 | .94 | 1.48 | 1.48 |
| E | 7.68 | 7.68 | 10.24 | 10.24 |
| F | 5.12-6.57 | 5.12-6.57 | 6.89-8.78 | 6.89-8.78 |
| G | 1.57 | 1.57 | 2.48 | 2.48 |
| H | .78 | .9 | 1.1 | 1.38 |
| Net Weight (lb.) | 9 | 11 | 22 | 26 |

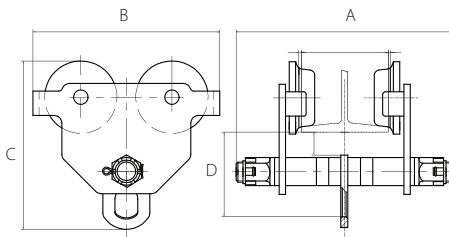
STAINLESS STEEL PUSH BEAM TROLLEY



Features

- Stainless Steel Type 304 Construction for Corrosion Resistance
- Fits to most I, S, and W-Beams
- Individual Test Certificate and Serial Number
- Anti-Drop Plate
- Stainless Steel ID Tag
- Precision Ball Bearing Trolley Wheels with food grade lubricant

Standards - CE, ASME/ANSI B30.17, ASME/ANSI B30.16, AS1418.2 (For use with manual or powered hoists)



| | OZSS025PBT | OZSS05PBT | OZSS1PBT | OZSS2PBT | OZSS3PBT | OZSS5PBT |
|------------------------------|------------|-----------|----------|----------|----------|----------|
| Capacity (tons) | 0.25 | 0.5 | 1 | 2 | 3 | 5 |
| Adjustable flange width (in) | 2-6 | 2.5-8 | 2.5-8 | 3.5-8 | 4-8 | 4-8 |
| Max flange thickness (in) | .82 | .97 | .97 | 1.11 | 1.34 | 1.57 |
| A | 10 | 12.21 | 12.8 | 13.39 | 14.57 | 16.74 |
| B | 7.7 | 8.39 | 9.57 | 10.75 | 12.72 | 15.56 |
| C | 6.8 | 7.8 | 8.82 | 10.56 | 12.96 | 15.08 |
| D | 4 | 4.61 | 5.08 | 6.34 | 7.76 | 9.1 |
| Minimum radius curve (ft) | 3.28 | 3.28 | 3.28 | 4.26 | 4.26 | 5.24 |
| Net weight (lb.) | 7.7 | 13.9 | 22.7 | 39.7 | 81.6 | 114.6 |

Stainless Steel Geared Beam Trolleys .5 Ton – 5 Ton available. Special order.



SPARK RESISTANT CHAIN HOIST

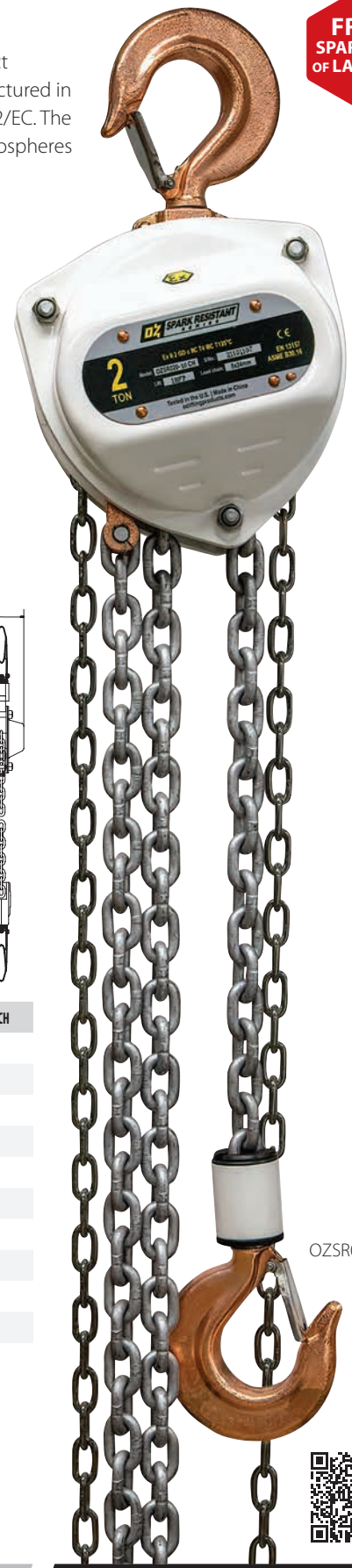


Features

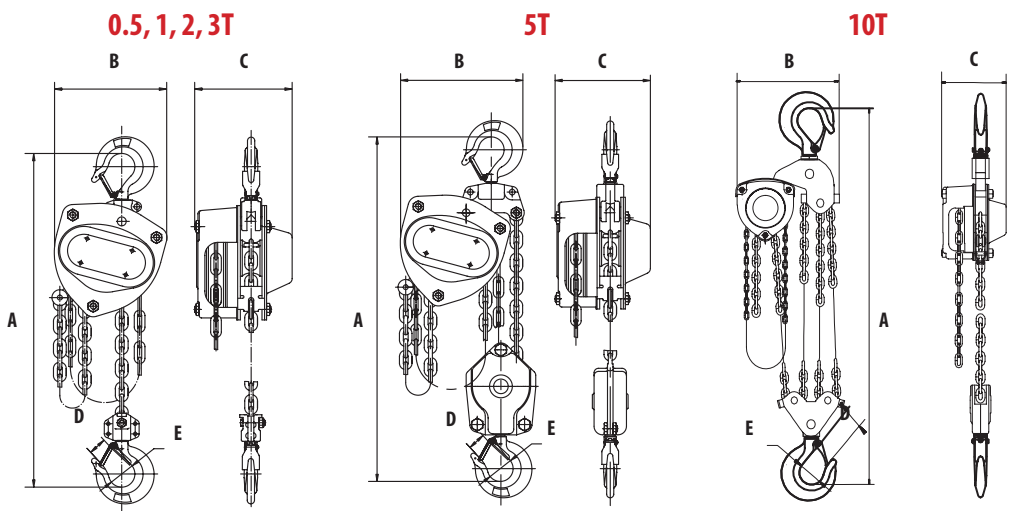
Potentially explosive atmospheres exist in many areas of industry. Explosive zones carry extremely strict guidelines and equipment requirements. OZ Lifting Products' Spark Resistant Chain Hoists are manufactured in compliance with the EU's explosion-proof standard ATEX94/9/EC and the Machinery Directive 2006/42/EC. The explosion-proof level can reach: EX II2 GD c IIIC T135 °C. They are suitable for potentially explosive atmospheres including Zone 1 & 2 (gas) as well as Zone 21 & 22 (dust).

- Type EX-F3 Spark Resistant
- Unique Hand Wheel Design
- Minimal Load Lifting Effort
- Fully Enclosed Gearing
- Stainless Steel Safety Latches
- Stainless Steel Hand Chain
- Copper Plated Hooks Hand Wheel, and Roller Guides
- Individual Test Certificate and Serial Number
- Dacromet® Finish Load Chain
- Fully Machined Lift Wheel
- Totally Enclosed Gearing
- For Lifting or Pulling
- Low Headroom
- Weatherproof Load Holding Brake
- All Gears and Shafts on Roller Bearings
- Copper Riveted ID Tags

FREE SPARE SET OF LATCHES



Standards - CE, EX-F3 (Ex II 2 GD c IIIC T135°C), ASME/ANSI B30.16, AS1418.2



| | OZSR005-XXCH | OZSR010-XXCH | OZSR020-XXCH | OZSR030-XXCH | OZSR050-XXCH | OZSR100-XXCH |
|-------------------------------|--------------|--------------|--------------|--------------|--------------|--------------|
| Capacity (tons) | 0.5 | 1 | 2 | 3 | 5 | 10 |
| Falls of Chain | 1 | 1 | 1 | 1 | 2 | 4 |
| Effort to Lift S.W.L. (lb.) | 54 | 56 | 75 | 83 | 85 | 87 |
| Loadchain Diameter (mm) | 5x15 | 6x18 | 8x24 | 10x30 | 10x30 | 10x30 |
| Dimensional Information (in) | A | 13.58 | 14.80 | 18.50 | 22.83 | 30.71 |
| | B | 5.82 | 6.77 | 8.26 | 10.03 | 15.16 |
| | C | 5.19 | 5.94 | 6.88 | 8.07 | 7.44 |
| Hook-opening, upper & lower | D | 0.90 | 1.02 | 1.33 | 1.53 | 1.93 |
| | E | 1.37 | 1.57 | 1.96 | 2.16 | 2.55 |
| Net Weight of Head Only (lb.) | 13 | 18 | 31 | 51 | 60 | 114 |

Standard Lift: 10, 15, 20, 30 ft. We also do custom rigging

Dimensions and illustrations are for reference only and subject to change without notice. XX in hoist model number indicates length of lift by foot.



WARNING
CANCER AND REPRODUCTIVE HARM
 Some products may contain chemicals known to the state of California to cause cancer, or birth defect or reproductive harm.
www.P65Warning.ca.gov



SPARK RESISTANT PUSH BEAM TROLLEY



Features

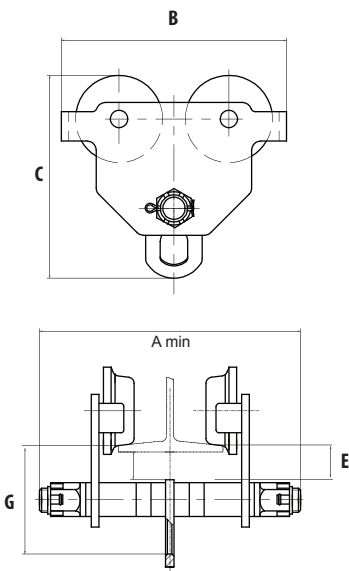
Potentially explosive atmospheres exist in many areas of industry. Explosive zones carry extremely strict guidelines and equipment requirements. OZ Lifting Products' Spark Resistant Push Beam Trolleys are manufactured in compliance with the EU's explosion-proof standard ATEX94/9/EC and the Machinery Directive 2006/42/EC. The explosion-proof level can reach: EX II 2 GD c IIC T135 °C. They are suitable for potentially explosive atmospheres including Zone 1 & 2 (gas) as well as Zone 21 & 22 (dust).

- Type EX-GCT Spark Resistant Equipped with anti-spark coating, suitable for potential explosive atmospheres.
- Copper plated wheels and lifting ring
- Copper riveted ID Tags
- Fits to most I, S, and W-Beams
- Precision ball bearing trolley wheels
- Anti-drop plate
- Individual test certificate & serial number



OZSR2PBT

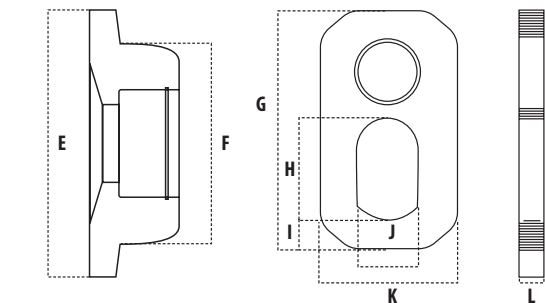
Standards - CE, ATEX-GCT, (Ex II 2 GD c IIC T4 IIC T135°C), ASME/ANSI B30.11, ASME/ANSI B30.17, AS1418.2 (For use with manual or powered hoists)



| | OZSR05PBT | OZSR1PBT | OZSR2PBT | OZSR3PBT | OZSR5PBT | OZSR10PBT |
|------------------------------|-----------|-----------|------------|------------|------------|------------|
| Capacity (tons) | .5 | 1 | 2 | 3 | 5 | 10 |
| Minimum radius curve (ft) | 2.62 | 3.28 | 3.61 | 4.26 | 4.59 | 6.56 |
| Product dimensions (in) | A min | 11.61 | 12.24 | 16.89 | 17.52 | 19.29 |
| | B | 7.83 | 9.69 | 10.87 | 13.07 | 16.69 |
| Product dimensions (in) | C | 7.36 | 8.74 | 10.34 | 12.17 | 15.59 |
| | G | 4.13 | 4.92 | 5.91 | 6.73 | 7.48 |
| Max flange thickness (in) | E | 1.18 | 1.50 | 1.50 | 1.57 | 1.77 |
| Adjustable flange width (in) | 1.97-8.00 | 2.50-8.00 | 3.64-12.00 | 3.94-12.00 | 4.50-12.00 | 4.88-12.00 |
| Net weight (lb.) | 16 | 23 | 42 | 64 | 95 | 196 |

Wheel & Bail dimensions

| SIZE | 0.5T | 1T | 2T | 3T | 5T | 10T |
|------|------|------|------|------|------|-------|
| E | 3.11 | 3.74 | 4.25 | 5.12 | 5.63 | 6.93 |
| F | 2.17 | 2.68 | 3.15 | 3.94 | 4.33 | 5.35 |
| G | 3.50 | 4.02 | 5.12 | 6.02 | 7.24 | 7.68 |
| H | 1.26 | 1.58 | 2.05 | 2.48 | 2.95 | 4.72 |
| I | 0.57 | 0.59 | 0.71 | 0.87 | 1.18 | 1.77 |
| J | 0.98 | 1.18 | 1.50 | 1.58 | 1.97 | 2.84 |
| K | 1.97 | 2.44 | 2.95 | 3.35 | 4.25 | 11.42 |
| L | 0.24 | 0.32 | 0.47 | 0.55 | 0.63 | 0.98 |



Dimensions and illustrations are for reference only and subject to change without notice.



WARNING
CANCER AND REPRODUCTIVE HARM
 Some products may contain chemicals known to the state of California to cause cancer, or birth defects or reproductive harm.
www.P65Warning.ca.gov



DYNAMOMETER EQUIPPED LEVER HOIST



Features

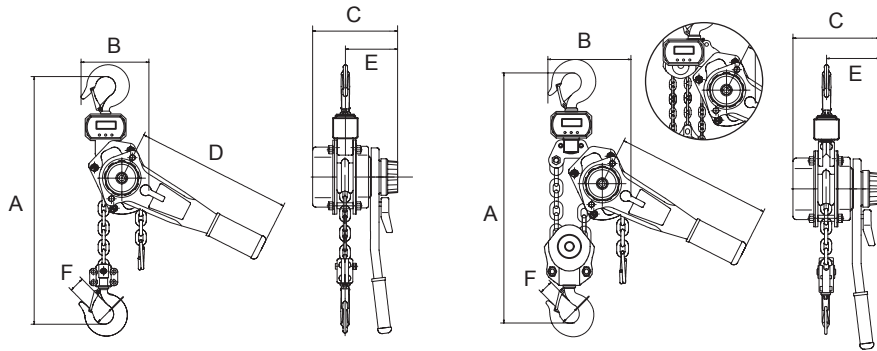
The Dyno-Hoist provides an accurate and reliable reading of the weight of the load being lifted and displays "OVER" when you have reached 126% rated capacity of the hoist. The integrated dynamometer can display the load weight in kg or lb. and runs on standard AA batteries with a run time of 150 hours. When not in use the battery energy saving system turns off the dynamometer. This scale is used for weighing loads not for trade.

- All-steel construction
- Zinc plated load chain
- Fully-enclosed gearing
- Top & bottom hooks swivel
- Heavy-duty latches
- Weston-Style brake system
- AC power cord/charger included
- Steel handle with rubber grip
- Forged alloy steel hooks
- Minimal load lifting effort
- Long lasting powder coat finish
- Load sheave bearings
- Individual test certificate & serial number

Standards - CE, ASME.ANSI B30.21, AS1418.2

0.75, 1.5, 3T

6, 9T (9T pictured, 3 falls of chain)



| | OZDH075-XXLH | OZDH150-XXLH | OZDH300-XXLH | OZDH600-XXLH | OZDH900-XXLH |
|-----------------------------|--------------|--------------|--------------|--------------|--------------|
| Capacity (tons) | 0.75 | 1.5 | 3 | 6 | 9 |
| Effort to Lift S.W.L. (lb.) | 31.4 | 49.5 | 72 | 76.5 | 81 |
| Falls of Chain | 1 | 1 | 1 | 2 | 3 |
| Load Chain Diameter (mm) | 6x18 | 8x24 | 10x30 | 10x30 | 10x30 |
| Product Dimensions (in) | A | 15.96 | 17.73 | 21.82 | 26.41 |
| | B | 5.28 | 5.91 | 7.48 | 9.53 |
| | C | 5.71 | 6.89 | 7.68 | 7.68 |
| | D | 12.2 | 16.14 | 16.14 | 16.14 |
| | E | 3.39 | 3.94 | 4.53 | 4.53 |
| Hook-opening, Upper & Lower | F | 1.18 | 1.26 | 1.50 | 1.89 |
| Net Weight (lb.) | 15 | 23 | 40 | 58 | 90 |

Standard Lift: 5, 10, 15, 20 ft. We also do custom rigging

Dimensions and illustrations are for reference only and subject to change without notice. XX in hoist model number indicates length of lift by foot.



OZDH75-10LH



Features

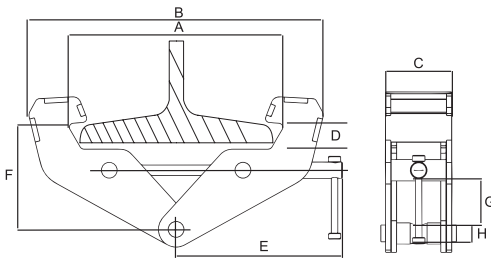
- Fall protection 310 lb.
- Robust all-steel fully-welded construction
- Super-quick adjustment to most I-Beams (see measurements below)
- ROHS compliant zinc plated finish
- Permanent engraved load rating
- Secondary rod lock nut
- Made in USA
- Individual test certificate & serial number

Standards:

This product meets or exceeds OSHA 1926 Subpart M
OSHA 1910.140
ASME Z359.1
ASME A10.32-2012
standards for fall protection.



OZ1BCA-MR

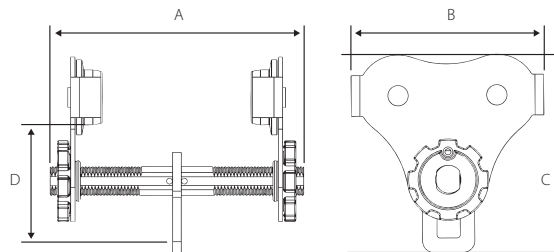


| | OZ1BCA-MR | OZ2BCA-MR | OZ3BCA-MR | OZ5BCA-MR | OZ10BCA-MR |
|------------------------------|-----------|-----------|-----------|-----------|------------|
| Capacity (tons) | 1 | 2 | 3 | 5 | 10 |
| Fall Protection (lb.) | 310 | 310 | 310 | 310 | 310 |
| Dimensional Information (in) | A | 3-8 | 3-8 | 3.5-13 | 3.5-13 |
| | B | 14.75 | 14.75 | 20.5 | 20.5 |
| | C | 2.51 | 2.91 | 3.94 | 4.41 |
| | D | 0.9 | 0.9 | 1.5 | 1.5 |
| | E | 9.5 | 9.5 | 11 | 11 |
| | F | 4.75-5.75 | 4.75-5.75 | 7.5-9 | 7.5-9 |
| | G | 1.75 | 1.75 | 2.5 | 2.5 |
| | H | .75 | .875 | .975 | 1.125 |
| Net Weight (lb.) | 9 | 11 | 22 | 26 | 39 |

PUSH BEAM TROLLEY USA

Features

- Fall protection 310 lb.
- Fast and easy width adjustments
- Built-in width adjustment indicator
- Universal wheel tread fits most I, S, and W-Beams
- Premium double-sealed ball bearings
- ROHS compliant zinc plated finish
- Anti-drop plates
- Glow in the dark decals
- Ships fully assembled
- Made in USA
- Individual test certificate & serial number



OZ1PBTA-MR
[PATENTED]

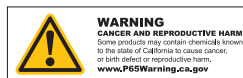
Standards:

This product meets or exceeds OSHA 1926 Subpart M
OSHA 1910
ASME Z359.1-2007
ASME A10.32-2012
standards for fall protection.

Dimensions and illustrations are for reference only and subject to change without notice.

See wheel & bail dimensions page 18

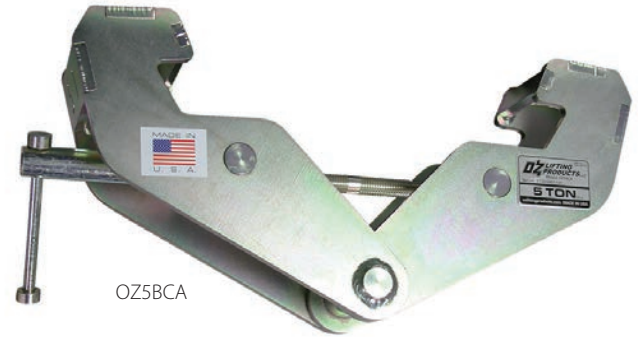
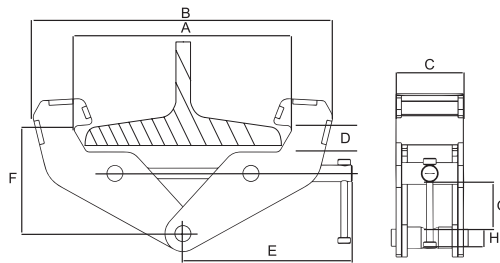
| | OZ05PBTA-MR | OZ05PBTA-MR-12 | OZ05PBTA-MR-16 | OZ1PBTA-MR | OZ1PBTA-MR-12 | OZ1PBTA-MR-16 |
|------------------------------|-------------|----------------|----------------|------------|---------------|---------------|
| Capacity (tons) | .5 | .5 | .5 | 1 | 1 | 1 |
| Adjustable flange width (in) | 2.52-8.00 | 2.52-12.00 | 2.52-16.00 | 2.75-8.00 | 2.75-12.00 | 2.75-16.00 |
| Max Flange Thickness (in) | 1.12 | 1.12 | 1.12 | 1 | 1 | 1 |
| Product dimensions | A | 12.25 | 15.5 | 19.5 | 15.5 | 19.5 |
| | B | 8.3 | 8.3 | 8.3 | 10.2 | 10.2 |
| | C | 8.5 | 8.5 | 8.5 | 9.8 | 9.8 |
| | D | 5 | 5 | 5 | 5.5 | 5.5 |
| Minimum radius curve (ft) | 2.75 | 2.75 | 2.75 | 3.35 | 3.35 | 3.35 |
| Net weight (lb.) | 16 | 19 | 20 | 26 | 30 | 31 |



Features

- Robust all-steel fully-welded construction
- Super-quick adjustment to fit most I-Beams (see measurements below)
- ROHS compliant zinc plated finish
- Permanent engraved load rating
- Individual test certificate and serial number
- Made in USA

**Standards - ASME/ANSI B30.16,
BTH-1 Design Category B Service Class 0**

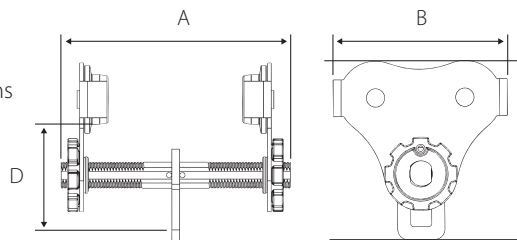


| | OZ1BCA | OZ2BCA | OZ3BCA | OZ5BCA | OZ10BCA |
|------------------|-------------|-------------|----------|----------|-------------|
| Capacity (tons) | 1 | 2 | 3 | 5 | 10 |
| A | 3 – 9 | 3 – 9 | 3.5 – 13 | 3.5 – 13 | 3.5 – 13 |
| B | 14.75 | 14.75 | 20.5 | 20.5 | 22 |
| C | 2.51 | 2.91 | 3.94 | 4.41 | 4.72 |
| Dimensions (in) | | | | | |
| D | 0.9 | 0.9 | 1.5 | 1.5 | 1.5 |
| E | 9.5 | 9.5 | 11 | 11 | 11.5 |
| F | 4.75 – 5.75 | 4.75 – 5.75 | 7.5 – 9 | 7.5 – 9 | 5.5 – 9.375 |
| G | 1.75 | 1.75 | 2.5 | 2.5 | 4 |
| H | .75 | .875 | .975 | 1.125 | 1.625 |
| Net Weight (lb.) | 9 | 11 | 22 | 26 | 39 |

PUSH BEAM TROLLEY USA

Features

- Fastest adjusting trolley requiring no tools to install
- Lightweight robust construction
- ROHS compliant zinc plated finish
- Glow in the dark decals
- Universal wheel tread fits most I, S, and W-Beams
- Precision ball bearing trolley wheels
- Side plates protect trolley wheels
- Anti-drop plate
- Individual test certificate and serial number
- Made in USA



Standards - ASME/ANSI B30.17



| | OZ05PBTA | OZ05PBTA-12 | OZ05PBTA-16 | OZ1PBTA | OZ1PBTA-12 | OZ1PBTA-16 | OZ2PBTA | OZ3PBTA |
|------------------------------|-----------|-------------|-------------|-----------|------------|------------|-----------|-----------|
| Capacity (tons) | .5 | 5 | 5 | 1 | 1 | 1 | 2 | 3 |
| Adjustable flange width (in) | 2.52-8.00 | 2.52-12.00 | 2.52-16.00 | 2.75-8.00 | 2.75-12.00 | 2.75-16.00 | 3.75-8.00 | 3.75-8.00 |
| Max Flange Thickness (in) | 1.12 | 1.12 | 1.12 | 1 | 1 | 1 | 1.5 | 1.75 |
| Product dimensions | | | | | | | | |
| A | 12.25 | 15.5 | 19.5 | 11 | 15.5 | 19.5 | 14 | 14 |
| B | 8.3 | 8.3 | 8.3 | 10.2 | 10.2 | 10.2 | 12 | 15.4 |
| C | 8.5 | 8.5 | 8.5 | 9.8 | 9.8 | 9.8 | 11.9 | 14 |
| D | 5 | 5 | 5 | 5.5 | 5.5 | 5.5 | 8.5 | 9.87 |
| Minimum radius curve (ft) | 2.75 | 2.75 | 2.75 | 3.35 | 3.35 | 3.35 | 4.5 | 5 |
| Net weight (lb.) | 16 | 19 | 20 | 26 | 30 | 31 | 45 | 80 |



See wheel and bail dimensions on page 18
Dimensions and illustrations are for reference only and subject to change without notice.

BEAM CLAMP



Features

- Robust, all-steel construction
- Super-quick adjustment to fit most I-Beams (see measurements below)
- Durable baked-enamel paint protection
- Stainless steel ID tag
- Individual test certificate and serial number

Standards - CE, ASME/ANSI B30.16

| | OZ1BC | OZ2BC | OZ3BC | OZ5BC | OZ10BC |
|------------------|------------|------------|------------|------------|------------|
| Capacity (tons) | 1 | 2 | 3 | 5 | 10 |
| A | 2.95-9.05 | 2.95-9.05 | 3.15-12.60 | 3.54-12.60 | 3.54-12.60 |
| B | 14.96 max. | 14.96 max. | 18.50 max. | 19.68 max. | 20.47 max. |
| C | 2.51 | 2.91 | 3.94 | 4.41 | 4.72 |
| Dimensions (in) | | | | | |
| D | .90 | .90 | 1.57 | 1.57 | 1.60 |
| E | 9.13 | 9.13 | 10.63 | 10.90 | 11.22 |
| F | 3.54-5.90 | 3.54-5.90 | 5.71-8.66 | 5.71-8.66 | 6.30-9.05 |
| G | 1.02 | 1.02 | 2.63 | 3.50 | 3.87 |
| H | .75 | .87 | .96 | 1.30 | 1.60 |
| Net Weight (lb.) | 9 | 11 | 21 | 25 | 35 |

PUSH BEAM TROLLEY



Features

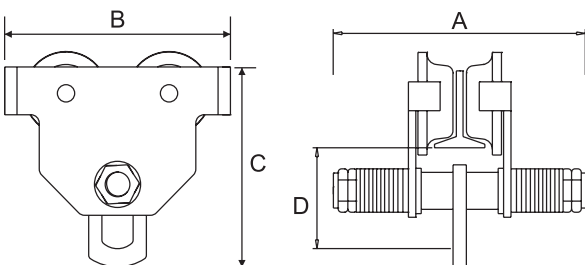
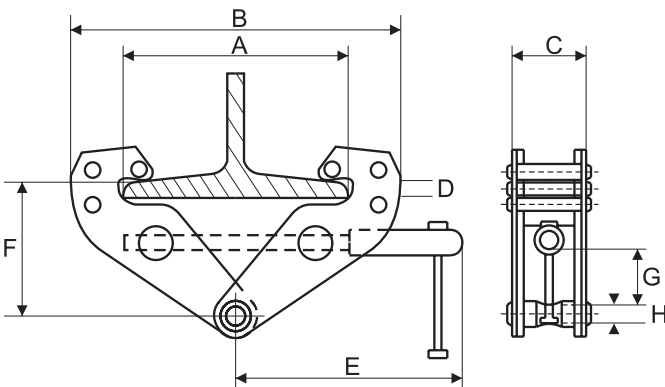
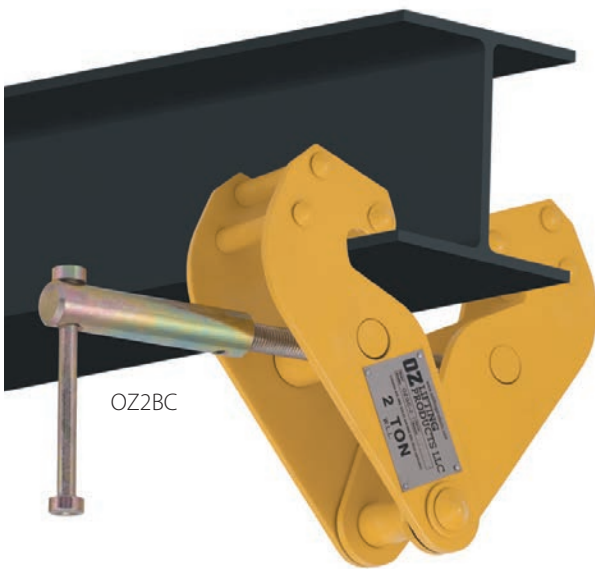
- Lightweight robust construction
- Fits most I, S, and W-Beams
- Durable baked enamel paint protection
- Precision ball bearing trolley wheels
- Anti-drop plate
- Stainless steel ID tag
- Individual test certificate and serial number

Standards - CE, ASME /ANSI B30.17

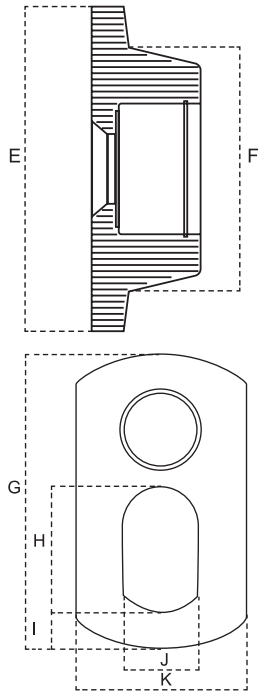
| | OZ025PBT | OZ05PBT | OZ1PBT | OZ2PBT | OZ3PBT | OZ5PBT | OZ10PBT |
|------------------------------|-----------|-----------|-----------|------------|------------|------------|------------|
| Capacity (tons) | .25 | .5 | 1 | 2 | 3 | 5 | 10 |
| Adjustable Flange Width (in) | 2.00-6.00 | 2.52-8.00 | 2.52-8.00 | 3.46-12.00 | 4.33-12.00 | 4.49-12.00 | 4.95-12.00 |
| Max Flange Thickness (in) | 0.82 | 1.14 | 1.50 | 1.18 | 1.36 | 1.44 | 1.97 |
| Product Dimensions (in) | | | | | | | |
| A | 10.00 | 12.25 | 12.75 | 17.0 | 17.72 | 18.90 | 17.56 |
| B | 7.68 | 8.35 | 9.45 | 11.53 | 13.78 | 15.04 | 16.75 |
| C | 6.77 | 7.67 | 8.74 | 10.53 | 12.68 | 14.65 | 16.00 |
| D | 4.02 | 4.33 | 4.90 | 5.79 | 6.83 | 7.87 | 7.5 |
| Minimum Radius Curve (ft) | 3.25 | 3.28 | 3.28 | 3.28 | 4.59 | 3.28 | 8.20 |
| Net Weight (lb.) | 7.7 | 12 | 23 | 40 | 66 | 100 | 192 |
| Bail Pins | 1 | 1 | 1 | 1 | 1 | 1 | 2 |

See wheel and bail dimensions on page 18

Dimensions and illustrations are for reference only and subject to change without notice.



PUSH BEAM TROLLEY WHEELS & BAIL DIMENSIONS



USA – See product page 16 & 17

| | OZ05PBTA | OZ1PBTA | OZ2PBTA | OZ3PBTA |
|--------|----------|---------|---------|---------|
| E (in) | 3.25 | 4.00 | 4.5 | 5.75 |
| F (in) | 2.38 | 3.00 | 3.25 | 4.38 |
| G (in) | 4.38 | 5.00 | 6.25 | 6.88 |
| H (in) | 1.50 | 1.88 | 2.25 | 2.5 |
| I (in) | 0.63 | 0.63 | 0.88 | 1.0 |
| J (in) | 1.00 | 1.25 | 1.38 | 1.5 |
| K (in) | 2.25 | 2.50 | 3.13 | 3.5 |
| L (in) | 0.38 | 0.50 | 0.50 | 0.63 |

Import – See product page 18

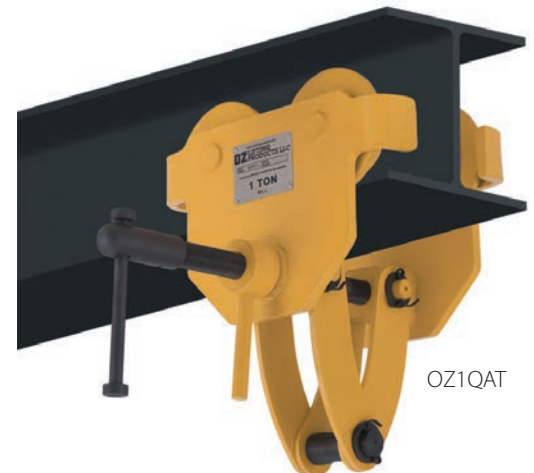
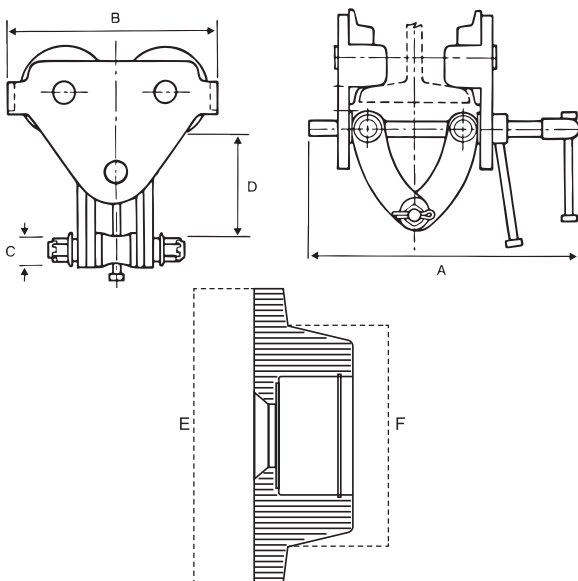
| | OZ025PBT | OZ05PBT | OZ1PBT | OZ2PBT | OZ3PBT | OZ5PBT | OZ10PBT |
|--------|----------|---------|--------|--------|--------|--------|---------|
| E (in) | 2.56 | 2.83 | 3.50 | 4.53 | 5.51 | 6.06 | 6.91 |
| F (in) | 1.77 | 2.05 | 2.48 | 3.35 | 4.13 | 4.60 | 5.24 |
| G (in) | 3.27 | 4.06 | 4.21 | 5.43 | 6.50 | 7.87 | 7.68 |
| H (in) | 1.18 | 1.52 | 1.52 | 2.24 | 2.68 | 3.15 | 4.49 |
| I (in) | 0.59 | 0.75 | 0.75 | 0.83 | 1.02 | 1.44 | 1.91 |
| J (in) | 0.94 | 1.26 | 1.26 | 1.34 | 1.65 | 1.89 | 3.35 |
| K (in) | 1.65 | 2.24 | 2.24 | 3.15 | 3.74 | 4.33 | 11.22 |
| L (in) | 0.24 | 0.31 | 0.39 | 0.47 | 0.16 | 0.71 | 0.79 |

QUICK ADJUST TROLLEY

Features

- Lightweight, robust construction.
- Super-quick adjustment to most I, S, and W-Beams (see measurements below)
- Safety handle lock
- Durable baked-enamel paint protection
- Precision ball bearing trolley wheels
- Anti-drop plate
- Stainless steel ID tag
- Individual test certificate and serial number

Standards - CE, ASME/ANSI B30.17



OZ1QAT

| | OZ05QAT | OZ1QAT | OZ2QAT | OZ3QAT | OZ5QAT | OZ10QAT |
|------------------------------|-----------|-----------|-----------|-----------|------------|------------|
| Capacity (tons) | 5 | 1 | 2 | 3 | 5 | 10 |
| Adjustable Flange Width (in) | 3.63-7.12 | 2.48-8.27 | 2.99-8.27 | 2.99-8.27 | 3.94-12.01 | 6.89-12.01 |
| Max Flange Thickness (in) | 1.44 | 2 | 2.17 | 1.42 | 3.07 | 2.13 |
| Dimensional Information (in) | A | 11.75 | 13.98 | 14.17 | 14.17 | 18.50 |
| | B | 8.00 | 9.53 | 11.06 | 12.91 | 14.84 |
| | C | .75 | .88 | .88 | .97 | 1.11 |
| (min-max) | D | 5.87-7.12 | 5.75-7.22 | 6.06-7.22 | 6.35-7.97 | 8.81-10.61 |
| Minimum Curve Radius (ft) | 3.28 | 3.28 | 3.61 | 4.26 | 4.60 | 5.57 |
| Net Weight (lb.) | 13 | 25 | 38 | 57 | 102 | 205 |

| | OZ05QAT | OZ1QAT | OZ2QAT | OZ3QAT | OZ5QAT | OZ10QAT |
|--------|---------|--------|--------|--------|--------|---------|
| E (in) | 3.22 | 4.02 | 5.00 | 5.79 | 6.30 | 7.34 |
| F (in) | 2.28 | 2.96 | 3.55 | 4.34 | 4.81 | 5.96 |



Dimensions and illustrations are for reference only and subject to change without notice.



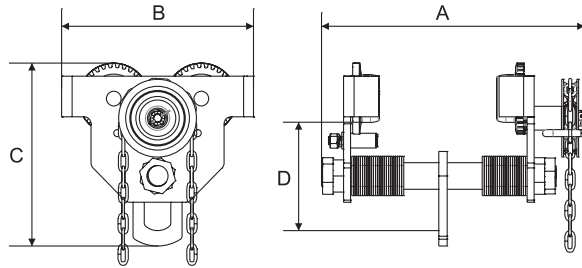
GEARED BEAM TROLLEY



Features

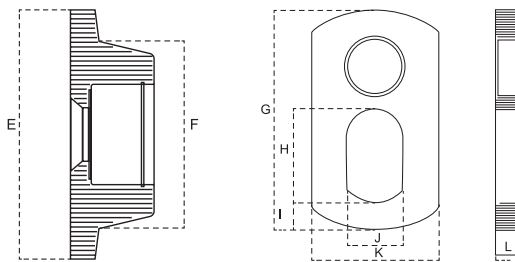
- Lightweight robust construction
- Fits most I, S, and W-Beams
- Durable baked enamel paint protection
- Gearing for positive load positioning
- Precision ball bearing trolley wheels
- Anti-drop plate
- Individual test certificate & serial number
- Zinc plated hand chain standard. Stainless steel hand chain available on request

Standards - CE, ASME/ANSI B30.17



| | OZ1GBT | OZ2GBT | OZ3GBT | OZ5GBT | OZ10GBT | OZ20GBT | OZ30GBT |
|------------------------------------|--------|--------|--------|--------|---------|---------|---------|
| Capacity (tons) | 1 | 2 | 3 | 5 | 10 | 20 | 30 |
| Adjustable Flange Width (in) | 2.52-8 | 3.46-8 | 3.46-8 | 3.46-8 | 4.88-8 | 5.39-13 | 5.83-13 |
| Max Flange Thickness (in) | 1.50 | 1.61 | 1.81 | 2.28 | 1.97 | 2.17 | 2.36 |
| Product Dimensions (in) | | | | | | | |
| A | 14.96 | 15.20 | 16.38 | 17.09 | 15.59 | 26.61 | 27.56 |
| B | 9.45 | 10.63 | 12.60 | 13.62 | 16.77 | 20.79 | 23.31 |
| C | 8.41 | 10.28 | 12.48 | 15.08 | 15.75 | 19.65 | 24.33 |
| D | 4.90 | 6.08 | 7.30 | 9.09 | 8.31 | 9.96 | 12.35 |
| Minimum Radius Curve (ft) | 3.28 | 4.27 | 4.92 | 5.25 | 8.3 | 16.40 | 16.40 |
| Net Weight (lb.) | 29 | 42 | 62 | 90 | 183 | 406 | 650 |
| Standard Length of Hand Chain (ft) | 9.00 | 9.00 | 9.00 | 9.00 | 9.00 | 9.00 | 9.00 |
| Effort to Pull (lb.) | 10 | 18 | 29 | 24 | 42 | 18 | 24 |
| Chain pulled to move one foot (ft) | 3.80 | 3.90 | 3.70 | 4.02 | 18.90 | 47.83 | 31 |
| Bail Pins | 1 | 1 | 1 | 1 | 2 | 2 | 2 |

50 and 100 T models available. Special order only. Please contact for specifications.



| | OZ1GBT | OZ2GBT | OZ3GBT | OZ5GBT | OZ10GBT | OZ20GBT | OZ30GBT |
|--------|--------|--------|--------|--------|---------|---------|---------|
| E (in) | 3.50 | 4.00 | 5.79 | 6.30 | 7.45 | 8.86 | 10.08 |
| F (in) | 2.48 | 2.68 | 4.34 | 4.81 | 5.95 | 6.68 | 7.88 |
| G (in) | 3.86 | 5.31 | 7.09 | 8.67 | 11.23 | 9.72 | 12.49 |
| H (in) | 1.46 | 2.01 | 2.96 | 3.75 | 4.73 | 4.53 | 6.42 |
| I (in) | 0.51 | 0.87 | 1.03 | 1.38 | 1.78 | 2.96 | 2.95 |
| J (in) | 1.02 | 1.50 | 1.78 | 2.37 | 3.23 | 4.25 | 5.91 |
| K (in) | 1.91 | 2.76 | 3.94 | 4.73 | 5.91 | 14.17 | 16.14 |
| L (in) | 0.39 | 0.47 | 0.63 | 0.79 | 0.99 | 1.38 | 1.97 |



OZ5GBT



OZ30GBT

With Gear Reduction - 20 and 30 T

Dimensions and illustrations are for reference only and subject to change without notice.



ELECTRIC CHAIN HOIST



Features

- **Overload Protection** – High performance friction clutch that is integrated with the load brake. This device is designed to prevent overloading the hoist.
- **Hook** – Forged carbon steel load hook with a heavy duty latch. Bottom hook features a thrust bearing to allow 360° rotation to prevent twisting of load chain. Top hook is rigid.
- **Load Sheave** – Provides better distribution of the load and smooth lifting with reduced vibration and wear.
- **Gearing** – Precision machined gears heat treated for strength and durability. Oil bath lubrication on all bearing rotating points for a quieter, smoother and cooler operation.
- **Braking** – Dual braking system combines mechanical plus regenerative braking for instant and safe operation.
- **Chain** – Grade 80 case-hardened alloy steel for long and dependable service life.
- **H3 Duty Class** – 25-30% duty cycle for operation in various applications.
- **115V Power** – 115/1/60 – Standard power making it easy to use virtually anywhere.
- **Pendant Controls** – IP64 ergonomic pendant design for operator comfort. Lift and lower load easily with integrated emergency stop.
- **Compact Aluminum Body** – Compact and lightweight powder coated cast aluminum alloy body making it perfect for many work station applications.
- **Chain Bag** – Durable vinyl bag comes standard. Oversized chain bag available on request.
- **Wireless or Pendant Option** - Choose between a standard corded pendant (EC) for easy operation or a wireless remote (ECW) for added versatility and freedom of movement.
- **Individual test certificate and serial number**



OVERLOAD PROTECTED



OZ1000ECW-20



OZ500EC

FREE CARRYING CASE
OZ500EC ONLY

Standards - CE, FCC

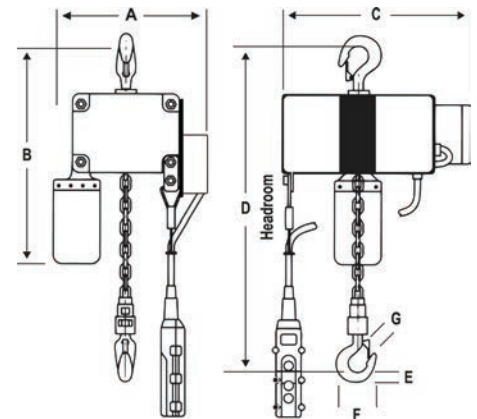
| | OZ500EC | OZ1000EC | OZ1000ECW-20 | OZ2000EC | OZ2000ECW-10 | OZ4000EC | OZ4000ECW-10 |
|--------------------------|--------------|--------------|--------------|--------------|--------------|--------------|--------------|
| Voltage | 115 / 1 / 60 | 115 / 1 / 60 | 115 / 1 / 60 | 115 / 1 / 60 | 115 / 1 / 60 | 115 / 1 / 60 | 115 / 1 / 60 |
| Capacity (lb.) | 500 | 1000 | 1000 | 2000 | 2000 | 4000 | 4000 |
| Falls of Chain | 1 | 1 | 1 | 1 | 1 | 2 | 2 |
| Speed (FPM) | 12.5 | 20 | 20 | 13 | 13 | 6.5 | 6.5 |
| Motor (HP) | .25 | 1.8 | 1.8 | 2.4 | 2.4 | 2.4 | 2.4 |
| Motor KW | 180W/4A | 1400W/10A | 1400W/10A | 1800W/13A | 1800W/13A | 1800W/13A | 1800W/13A |
| Standard Lift (ft.) | 20 | 20 | 20 | 10 | 10 | 10 | 10 |
| Duty Cycle (min.) | 15 (25%) | 18 (30%) | 18 (30%) | 18 (30%) | 18 (30%) | 18 (30%) | 18 (30%) |
| Pendant Length (ft.) | 15 | 19 | 19 | 19 | 19 | 19 | 19 |
| Power Cord Length (ft.) | 15 | 15 | 15 | 15 | 15 | 15 | 15 |
| Load Chain Diameter (mm) | 4 | 6.3 | 6.3 | 7.1 | 7.1 | 7.1 | 7.1 |
| Net Weight (lb.) | 18.00 | 54.80 | 60.50 | 55.00 | 60.70 | 78.60 | 84.30 |
| Wireless | No | No | Yes | No | Yes | No | Yes |

Custom lengths of lift available on all capacities shown.

| | OZ500EC | OZ1000EC | OZ1000ECW-20 | OZ2000EC | OZ2000ECW-10 | OZ4000EC | OZ4000ECW-10 |
|--------------------|---------|----------|--------------|----------|--------------|----------|--------------|
| A (in.) | 5.00 | 6.69 | 10.69 | 8.27 | 12.27 | 10.63 | 14.63 |
| B (in.) | 15.00 | 27.00 | 27.00 | 28.00 | 28.00 | 30.00 | 30.00 |
| C (in.) | 9.50 | 17.72 | 17.72 | 20.08 | 20.08 | 20.08 | 20.08 |
| D – Headroom (in.) | 11.00 | 16.93 | 16.93 | 18.90 | 18.90 | 24.40 | 24.40 |
| E (in.) | 0.60 | 1.02 | 1.02 | 1.14 | 1.14 | 1.61 | 1.61 |
| F (in.) | 2.50 | 3.62 | 3.62 | 3.90 | 3.90 | 5.00 | 5.00 |
| G (in.) | 0.75 | 0.87 | 0.87 | 1.22 | 1.22 | 1.50 | 1.50 |

Dimensions and illustrations are for reference only and subject to change without notice.

500, 1000, 2000, 4000 lb.



WARNING
CANCER AND REPRODUCTIVE HARM
Some products may contain chemicals known to the state of California to cause cancer, or birth defect or reproductive harm.
www.P65Warning.ca.gov



ELECTRIC BUILDER'S HOIST



Features

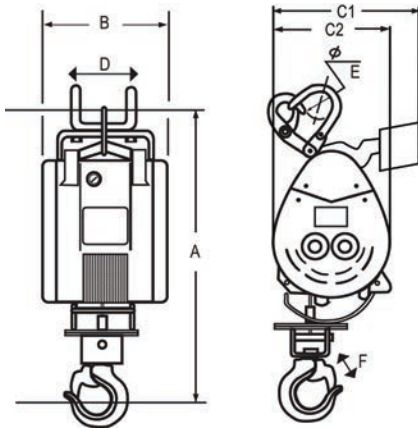
- Lightweight and compact design for convenient mounting
- Automatic shut-off when rope reaches limit arm
- Dynamic and mechanical brake provides instant and safe braking
- Upper and lower limit switches for additional safety
- Sensor arm for motor shut-off to prevent reverse winding
- Galvanized wire rope with 360-degree weighted hook includes safety latch
- Quick release pendant and power cords
- Standard 115V power source-compatible
- Individual test certificate & serial number
- Choose between a standard corded pendant (OBH) for easy operation or a wireless remote (OBHW) for added versatility and freedom of movement.

Standards - CE, FCC

| | OBH500 | OBHW500 | OBH1000 | OBHW1000 |
|---------------------------|-------------|-------------|-------------|-------------|
| Capacity - Full Drum (lb) | 500 | 500 | 1000 | 1000 |
| Motor Voltage | 115/1/60 | 115/1/60 | 115/1/60 | 115/1/60 |
| Speed (fpm) | 75 | 75 | 37 | 37 |
| Motor (HP) | 1.74 | 1.74 | 2.41 | 2.41 |
| Motor KW | 1300W/17.5A | 1300W/17.5A | 1800W/15.5A | 1800W/15.5A |
| Lifting Height (ft) | 90 | 90 | 90 | 90 |
| Wire Rope (in) | 3/16 | 3/16 | 1/4 | 1/4 |
| Net Weight (lb) | 54 | 57 | 70 | 73 |
| Power cord length (ft) | 15 | 15 | 15 | 15 |
| Pendant length (ft) | 65 | 65 | 65 | 65 |
| Full Load (AMPS) | 17.5 | 17.5 | 15.5 | 15.5 |
| Duty Cycle (min) | 15 (25%) | 15 (25%) | 15 (25%) | 15 (25%) |
| Wireless | No | Yes | No | Yes |



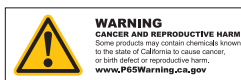
500 & 1000 LB



| | OBH500 | OBHW500 | OBH1000 | OBHW1000 |
|-----------------------|--------|---------|---------|----------|
| A (in) Height | 26.77 | 26.77 | 28.50 | 28.50 |
| B (in) Width | 9.50 | 9.50 | 10.50 | 10.50 |
| C1 (in) Depth | --- | 10.00 | --- | 12.00 |
| C2 (in) Depth | 7.88 | --- | 12.00 | --- |
| D (in) Hanger Width | 4.50 | 4.50 | 5.50 | 5.50 |
| E (in) Hanger Opening | 2 | 2 | 2 | 2 |
| F (in) Hook Opening | 1.62 | 1.62 | 1.50 | 1.50 |

75 fpm
OBH500

37 fpm
OBH1000



Dimensions and illustrations are for reference only and subject to change without notice.



WIRELESS ADAPTERS



The OZ Lifting Products Wireless Adapter is a plug-and-play unit that allows the user the ability to control their OZ Electric Chain Hoist or OZ Electric Builder's Hoist wirelessly from up to 250 feet away. The Wireless Adapter can be installed in minutes and connects to the hoist to improve safety, productivity, and efficiency for a variety of lifting applications.

Features

- Operate the hoist from a safe distance of up to 250 feet while keeping line of sight
- Compact and lightweight design easily connects and pairs to OZ Electric Chain Hoist or OZ Electric Builder's Hoist
- Improved safety, productivity, and efficiency
- 115V receiver voltage

Standards - CE, FCC

Wireless adapter kits include: Transmitter, receiver, mounting bracket, and hardware. Remote requires (2) AA batteries - not included. Hoist sold separately.



OBHWA-T500 with OBH500 shown



ECWA with OZ1000EC shown

| BUILDER'S HOIST | OBHWA-T500 | OBHWA-T1000 | OBHWA |
|--------------------------------------|--|---|--|
| Dimensions (Length x Width x Height) | 6 X 4 X 5 | 8 X 5 X 7 | 10 X 4.5 X 3.5 |
| Weight Assembled (lb) | 1.2 lb. | 1.8 lb. | 2.6 lb. |
| Receiver Voltage | 115V | 115V | 115V |
| Transmitter Battery | AA (x2) | AA (x2) | AA (x2) |
| Operating Range (Line of Sight) | 250 ft. | 250 ft. | 250 ft. |
| Wireless Adapter Compatibility | Wireless Adapter for use with: OBH500 (Only models with serial numbers starting with "T" and "KW") | Wireless Adapter for use with: OBH1000 (Only models with serial numbers starting with "T" and "KW") | Wireless Adapter for use with: OBH500 & OBH1000 (Only serial numbers starting with "K", "KR", and "500") Plug & Play |

| ELECTRIC CHAIN HOIST (ECWA) | |
|--------------------------------------|---|
| Dimensions (Length x Width x Height) | 7 X 12 X 4.5 |
| Weight Assembled (lb) | 3.4 lb. |
| Receiver Voltage | 115V |
| Transmitter Battery | AA (x2) |
| Operating Range (Line of Sight) | 250 ft. |
| Wireless Adapter Compatibility | OZ1000EC (All serial numbers), OZ2000EC (Excluding serial numbers starting with "V"), OZ4000EC (Excluding serial numbers starting with "V") |

ECWA



OBHWA-T500/T1000



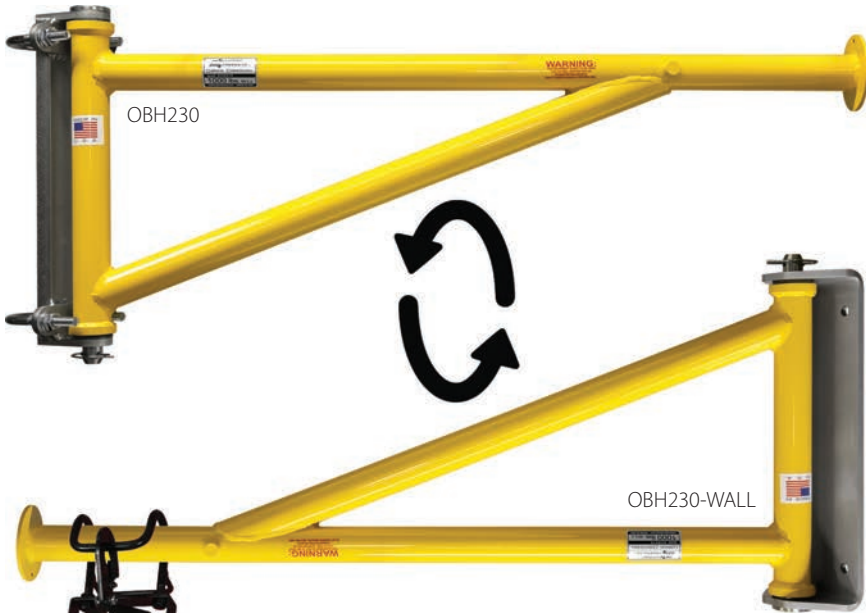
OBHWA



Dimensions and illustrations are for reference only and subject to change without notice.



ELECTRIC SERIES HOIST ACCESSORIES



OBH230

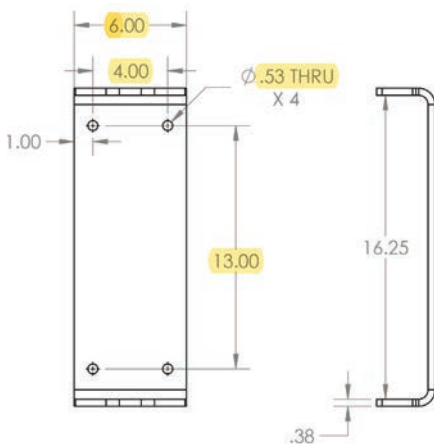
OBH230-WALL

Mounting Arm Bracket (Pipe-Mount and Wall-Mount)

- Durable powder coat finish
- Solid mounting bracket
- Portable / Light Weight
- Quick mount
- Includes mounting template
- Made in USA

Both OBH230 and OBH230-WALL can be reverse mounted. Ideal for low headroom situations.

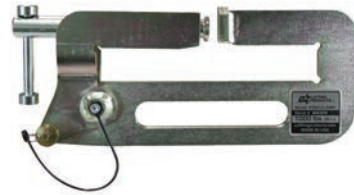
| | OBH230 | OBH230-WALL |
|------------------------|--------|-------------|
| W - Width (in) | 40 1/2 | 40 1/2 |
| H - Height (in) | 17 3/4 | 17 3/4 |
| D - Mounting Pipe (in) | 2 | N/A |
| Capacity (lb.) | 1000 | 1000 |
| Net Weight (lb.) | 26 | 31 |



OBH230-WALL - Mounting bolt pattern

Dimensions and illustrations are for reference only and subject to change without notice.

OBH-CLAMP Builder's Hoist Beam Clamp



| OBH-CLAMP | |
|-----------------------|-------|
| A - Width (in) | 13.5 |
| B - Height (in) | 5.375 |
| Max flange width (in) | 8 |
| Capacity (lb.) | 1000 |
| Net Weight (lb.) | 8 |

OBH-HC Hoist Clamp

Hoist Clamp for hanging 1000 lb. and under manual and electric chain hoist on OBH230 & OBH230-WALL



OZ05PBTA-OBH
Trolley with OBH Hanger
Refer to OZ05PBTA dimensions on page 15



OZGBT-OBH
Geared Trolley with OBH Hanger
Refer to OZ1GBT dimensions on page 18

OBH Hanger < 1.265" opening



OBH-HANGER



OBH-HANGER2

OZPBT-OBH Push Beam Trolley with OBH Hanger

Refer to OZ1PBT dimensions on page 18



CARBON STEEL & STAINLESS STEEL BRAKE WINCHES



Features

- Compact design
- Automatic weatherproof Weston-style brake
- Ergonomic rubber handle
- High gear ratio
- Multiple frame mounting positions

- Test certificate & serial number
- Solid machined gear
- For lifting or pulling/tensioning
- Dual cable anchor point

- Left hand version of stainless steel winch (OZ1000BWSS-LH) stainless steel. Optional on carbon steel

Standard - CE



Left Handed Stainless Steel OZ1000BWSS-LH

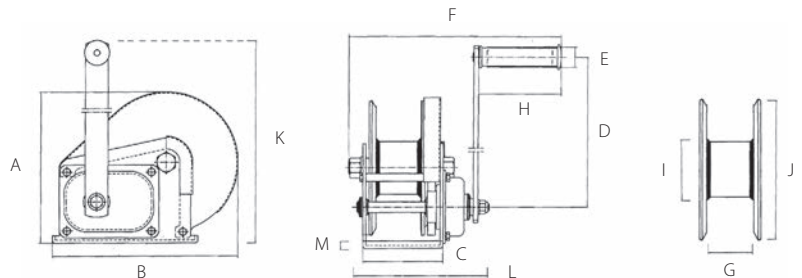


Drill Drive Adapter

| Cable/Drum Capacity | First Layer (ft) | Mid drum (ft) | Full drum (ft) |
|---|------------------|---------------|----------------|
| OZ1000BW – OZ1000BWSS using 1/8" wire rope | 7 | 74 | 140 |
| OZ1000BW – OZ1000BWSS using 3/16" wire rope | 5 | 34 | 75 |
| OZ1500BW – OZ1500BWSS using 3/16" wire rope | 7 | 66 | 140 |
| OZ1500BW – OZ1500BWSS using 1/4" wire rope | 5 | 27 | 89 |
| OZ2000BW – OZ2000BWSS using 1/4" wire rope | 8 | 36 | 85 |
| OZ2000BW – OZ2000BWSS using 5/16" wire rope | 7 | 22 | 52 |
| OZWINHND1 – 3/16" wire rope | 11 | 40 | 80 |
| OZWINHND1 – 1/4" wire rope | 8 | 27 | 55 |
| OZWINHND2 – 5/16" wire rope | 7 | 42 | 45 |

| Load Capacity (lb. - based on the amount of wire rope) | | | |
|--|------|------|------|
| OZ1000BW – OZ1000BWSS | 1000 | 750 | 500 |
| OZ1500BW – OZ1500BWSS | 1500 | 1250 | 750 |
| OZ2000BW – OZ2000BWSS | 2000 | 1500 | 1000 |
| OZWINHND1 | 1200 | 875 | 550 |
| OZWINHND2 | 2500 | 2000 | 1550 |

*Wire rope not included - see available options page 39



| | OZ1000BW | OZ1000BWSS | OZ1500BW – OZ1500BWSS | OZ2000BW – OZ2000BWSS | OZWINHND1 | OZWINHND2 | |
|------------------|----------|------------|-----------------------|-----------------------|-----------|-----------|-------|
| Capacity (lb.) | 1000 | 1000 | 1500 | 2000 | 1200 | 2500 | |
| Gear Ratio | 4.2:1 | 4.2:1 | 5:1 | 10:1 | 5.4:1 | 17.3:1 | |
| Dimensions (in) | A | 6.22 | 6.22 | 7.73 | 8.35 | 6.75 | 6.95 |
| | B | 7.20 | 7.20 | 9.36 | 11.10 | 7.50 | 11.42 |
| | C | 3.46 | 3.46 | 4.21 | 5.00 | 3.89 | 5.56 |
| | D | 8.26 | 8.26 | 12.68 | 12.99 | 7.00 | 12.33 |
| | E | 1.06 | 1.06 | 1.06 | 1.06 | 1.15 | 1.39 |
| | F | 10.43 | 10.43 | 10.63 | 11.81 | 10.72 | 13.64 |
| | G | 1.98 | 1.98 | 2.30 | 2.52 | 2.03 | 2.42 |
| | H | 4.29 | 4.29 | 4.29 | 4.29 | 4.00 | 4.00 |
| | I | 1.59 | 1.98 | 2.38 | 3.00 | 2.50 | 2.50 |
| | J | 5.33 | 5.33 | 7.00 | 7.09 | 6.17 | 6.16 |
| | K | 10.20 | 10.20 | 15.31 | 15.35 | 11.89 | 17.48 |
| | L | 5.98 | 5.98 | 6.89 | 7.87 | 5.61 | 8.86 |
| | M | 0.12 | 0.12 | 0.14 | 0.16 | 0.15 | 0.25 |
| Net Weight (lb.) | 8.00 | 8.00 | 17.00 | 22.00 | 10.00 | 24.00 | |



WARNING
CANCER AND REPRODUCTIVE HARM
 Some products may contain chemicals known to the state of California to cause cancer, or both defect or reproductive harm.
www.P65Warning.ca.gov

Dimensions and illustrations are for reference only and subject to change without notice.



AC & DC ELECTRIC WINCHES



Features

- Two-braking system mechanical and dynamic
- Fully-enclosed gearing
- Machine cut and hardened gears
- Lightweight
- Emergency handle
- Easily bolts on to OZ davit cranes

* Wire or synthetic rope assembly sold separately

Capacity

OZACW (115V AC): 1200 lb.
OZDCW (12V DC): 1200 lb.

Net Weight

OZACW – 22 lb.
OZDCW – 24 lb.

Maximum Drum Capacity

3/16" diameter wire rope=90' lift
1/4" diameter wire rope=45' lift

Pendant/ Power Cord Length

115V AC: 10' Pendant
10' Power Cord
12V DC: 10' Pendant
25' (+) Power Lead

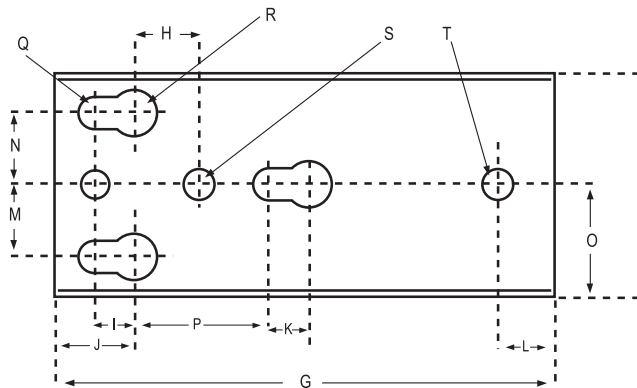
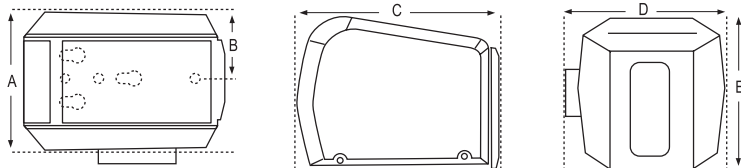
Motor Full Load AMPS

OZACW – 1.0 HP OZACW – 10A
OZDCW – 0.6 HP OZDCW – 70A



| Load Capacity Based on the Amount of Cable | 3/16" Cable | 1/4" Cable |
|--|-------------|------------|
| First Layer (lb.) | 800 | 1200 |
| Mid Drum (lb.) | 800 | 1120 |
| Full (lb.) | 800 | 850 |

| Winch Speed Based on Load & Cable on the Drum | First Layer | Full |
|---|-------------|------|
| AC, No Load (ft/min) | 23 | 35 |
| AC, Full Load (ft/min) | 12 | 16 |
| DC, No Load (ft/min) | 21 | 33 |
| DC, Full Load (ft/min) | 5.5 | 8 |



Mounting Plate

| Dimensions – All Models (in) | | Mounting Plate Dimensions – All Models (in) | | | | | |
|------------------------------|-------|---|------|---|------|---|-----|
| A | 7.43 | F | 3.62 | K | .62 | P | 3 |
| B | 3.57 | G | 8.68 | L | 1 | Q | .53 |
| C | 10.81 | H | 1.18 | M | 1.25 | R | .78 |
| D | 8.18 | I | .625 | N | 1.25 | S | .42 |
| E | 8.12 | J | 1.37 | O | 1.81 | T | .50 |

Dimensions and illustrations are for reference only and subject to change without notice.



ALUMI-LITE® DAVIT CRANE

Individually tested and certified at 125% W.L.L



OZA500DAV, OZA1000DAV



Ultra lightweight & portable

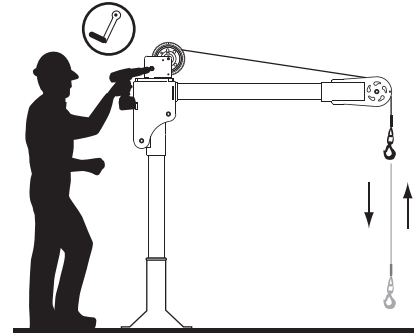
500 lb. and 1,000 lb. Capacity

Features

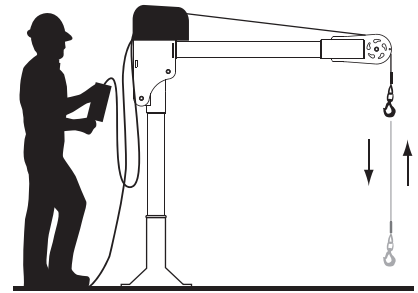
- Lightweight aerospace grade aluminum construction
- 360 degree rotation
- 3 different boom height adjustments
- Durable powder coat finish
- Truly Portable Design
- One-Person Assembly (No Tools Needed)
- Manual Din rated CE winch with brake (Includes power drill adapter)
- AC & DC winch options

OZA500DAV shown with optional OZPED3 Pedestal base and OZGAL.19-50B galvanized wire rope assembly and OZHB10 headache ball
Bases, cable assemblies and headache ball sold separately

Options for faster lowering and raising

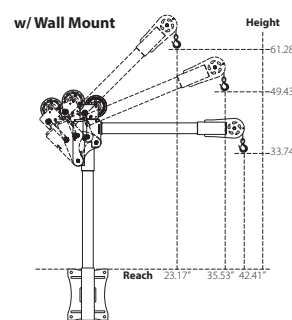
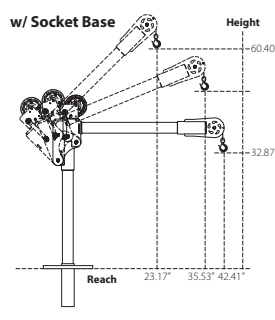
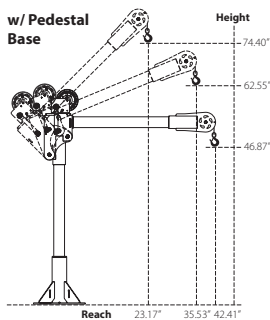


Manual winch w/drill drive adapter



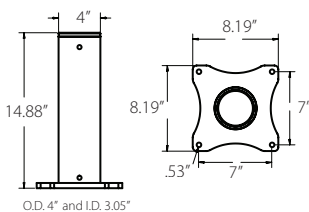
AC and DC power winches available
See page 26

OZA500DAV DIMENSIONS

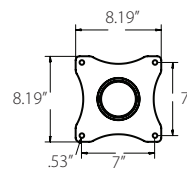
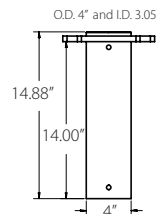


OZA500DAV BASES (sold separately) Comes with mounting template.

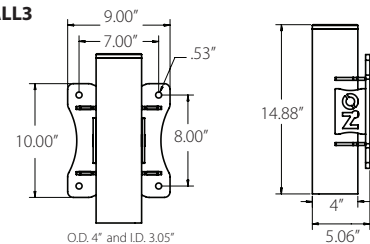
OZPED3



OZSOC3



OZWALL3



Weight

| Weight (excluding winch) | Boom | Mast | Net |
|--------------------------|------|------|-----|
| OZA500DAV (lb.) | 12 | 12 | 24 |
| OZA1000DAV (lb.) | 25 | 22 | 47 |

WIRE/SYNTHETIC ROPE ASSEMBLIES (sold separately) Custom length available.

Manual winch: 3/16" - 80 ft max. lift length
AC/DC Electric Winch: 3/16" - 90 ft max. lift length
See wire & synthetic rope assembly options page 39

OZA500DAV Load Ratings (lb.)

Based on 3/16" wire rope

| | First Layer | Mid Drum | Full Drum |
|---------------------|-------------|----------|-----------|
| Position 1 (0°) | 275 | 275 | 275 |
| Position 2 (+22.5°) | 330 | 330 | 330 |
| Position 3 (+45°) | 500 | 500 | 500 |

The listed load rating reflects the davit crane boom position as well as manual winch operation, assuming average lifting effort. Handle effort will increase as the cable is spooled onto the drum. Load rating and ease of lifting depend on the boom position, specific winch style, and the user's lifting effort. Dimensions and illustrations are for reference only and subject to change without notice.





Options for faster lowering and raising



WIRE/SYNTHETIC ROPE ASSEMBLIES

(sold separately) Custom length available.

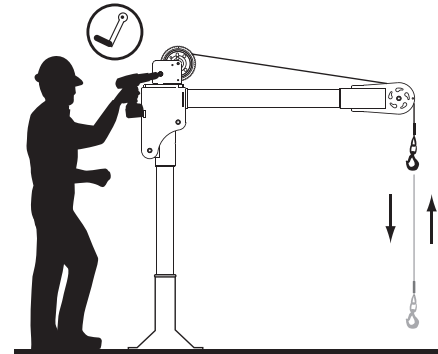
Manual winch: 1/4" - 55ft max. lift length
 AC/DC Electric Winch: 1/4" - 45ft max. lift length
 See wire & synthetic rope assembly options page 38

OZA1000DAV Load Ratings (lb.)

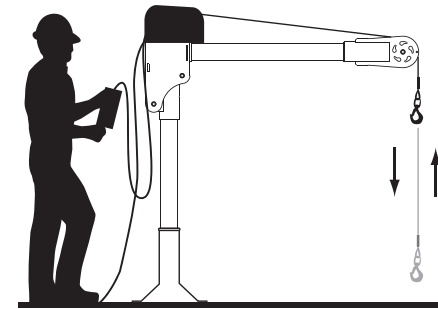
Based on 1/4" wire or 3/16" synthetic rope

| | 1st Layer | Mid Drum | Full Drum |
|---------------------|-----------|----------|-----------|
| Position 1 (0°) | 550 | 550 | 550 |
| Position 2 (+22.5°) | 650 | 650 | 550 |
| Position 3 (+45°) | 1000 | 875 | 550 |

OZA1000DAV-ACW shown with optional
 OZPED1-TP Pedestal base and
 OZSR.19-50 synthetic rope assembly
 Bases, cable assemblies and headache ball sold separately

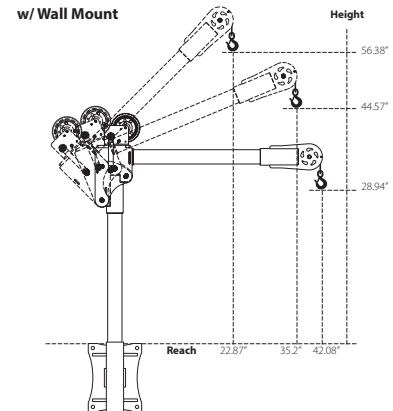
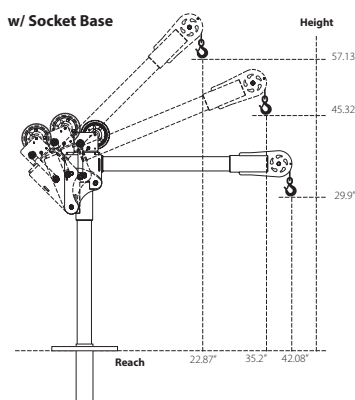
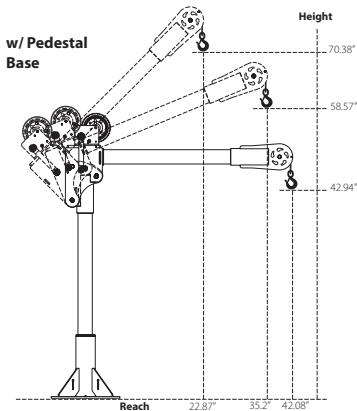


Manual winch w/drill drive adapter

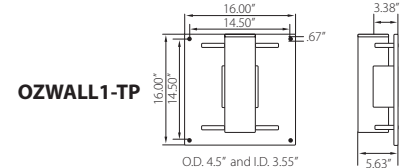
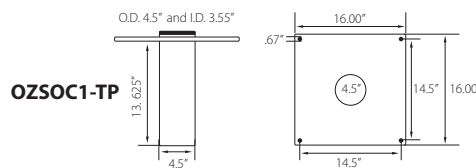
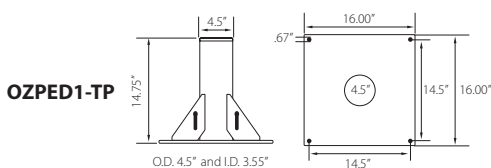


AC and DC power winches available
 See page 26

OZA1000DAV DIMENSIONS



OZA1000DAV BASES (sold separately) Comes with mounting template.



The listed load rating reflects the davit crane boom position as well as manual winch operation, assuming average lifting effort. Handle effort will increase as the cable is spooled onto the drum. Load rating and ease of lifting depend on the boom position, specific winch style, and the user's lifting effort. Dimensions and illustrations are for reference only and subject to change without notice.



WARNING
 CANCERS AND REPRODUCTIVE HARM
 Some products may contain chemicals known to the state of California to cause cancer, or birth defect or reproductive harm.
www.P65Warning.ca.gov



XR SERIES® DAVIT CRANE

Individually tested and certified at 125% W.L.L



OZXR500DAV, OZXR1000DAV



500 lb. and 1,000 lb. Capacity

Features

- Maximum 62-inch reach and 87-inch hook height (both models)
- Maintains maximum weight capacity in all positions
- 360 degree rotation
- 4 different boom height adjustments
- Manual Din rated CE winch with brake. Includes power drill drive adapter
- Durable steel construction with powder coat finish
- Manual Din rated CE winch with brake (Includes power drill adapter)
- AC & DC winch options

OZXR500DAV-ACW shown with optional OZPED3 Pedestal base and OZSR.19-50 synthetic rope assembly

Bases, cable assemblies and headache ball sold separately



Handle comes standard on both the XR 500 and XR 1000

Weight

| Weight (excluding winch) | Boom | Mast | Net |
|--------------------------|------|------|-----|
| OZXR500DAV (lb.) | 26 | 26 | 57 |
| OZXR1000DAV (lb.) | 46 | 41 | 95 |

OZXR500DAV Load Ratings (lb.)

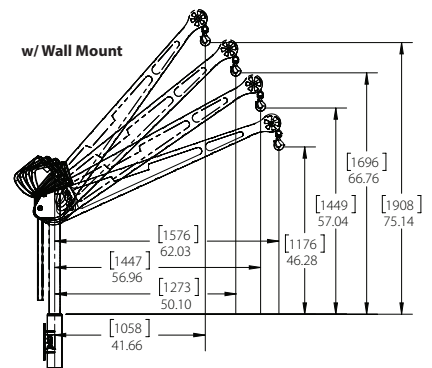
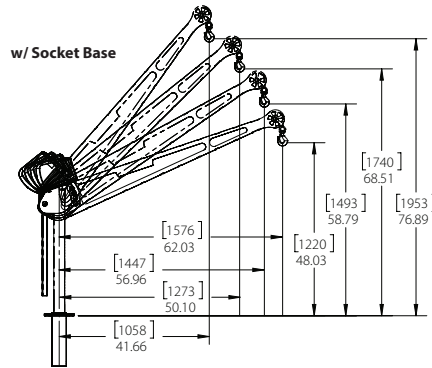
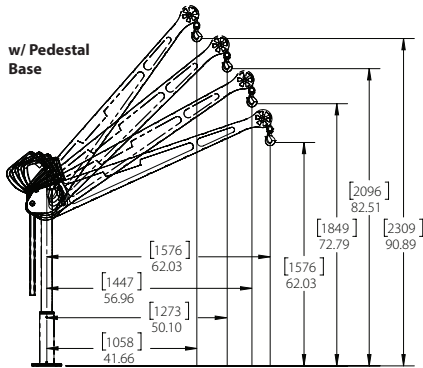
Based on 3/16" wire rope

| | First Layer | Mid Drum | Full Drum |
|---------------|-------------|----------|-----------|
| All positions | 500 | 500 | 500 |

Manual winch: 3/16" - 80 ft max. lift length
AC/DC Electric Winch: 3/16" - 90 ft max. lift length
See wire & synthetic rope assembly options page 38

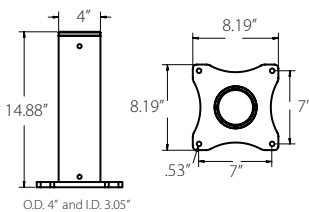
WIRE/SYNTHETIC ROPE ASSEMBLIES
(sold separately) Custom length available.

OZXR500DAV DIMENSIONS

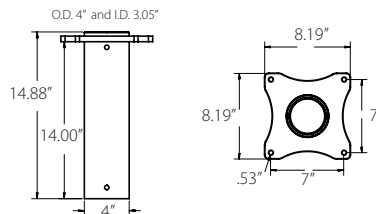


OZXR500DAV BASES (sold separately) Comes with mounting template.

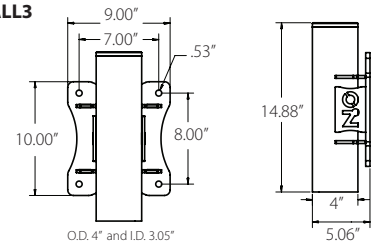
OZPED3



OZSOC3



OZWALL3



Davit crane maintains maximum capacity in all positions. However, the listed load rating reflects manual winch operation, assuming average lifting effort. Handle effort will increase as the cable is spooled onto the drum. Load rating and ease of lifting depend on the specific winch style and the user's lifting effort. Dimensions and illustrations are for reference only and subject to change without notice.



Options for faster lowering and raising



OZXR1000DAV shown with optional OZPED1-TP Pedestal base and OZGAL.25-50B galvanized wire rope assembly and OZHB10 headache ball

Bases, cable assemblies and headache ball sold separately

WIRE/SYNTHETIC ROPE ASSEMBLIES

(sold separately) Custom length available.

Manual winch: 1/4" - 55 ft. max. lift length

AC/DC Electric Winch: 1/4" - 45ft max. lift length

See wire & synthetic rope assembly options page 39

OZXR1000DAV Load Ratings (lb.)

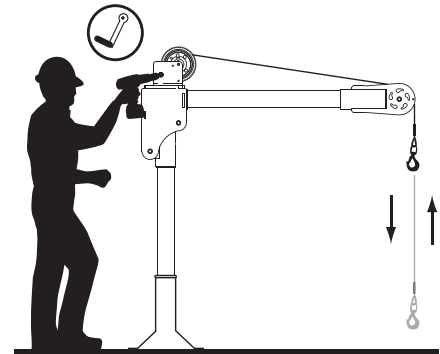
Based on 1/4" wire or 3/16" synthetic rope

| All Positions | |
|---------------|----------|
| First Layer | 1000 lb. |
| Mid Drum | 875 lb. |
| Full Drum | 550 lb. |

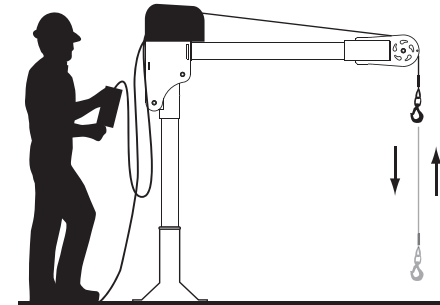
OZXR1000DAV Load Ratings (lb.)

Based on 3/16" wire rope

| All Positions | |
|---------------|---------|
| First Layer | 800 lb. |
| Mid Drum | 800 lb. |
| Full Drum | 550 lb. |

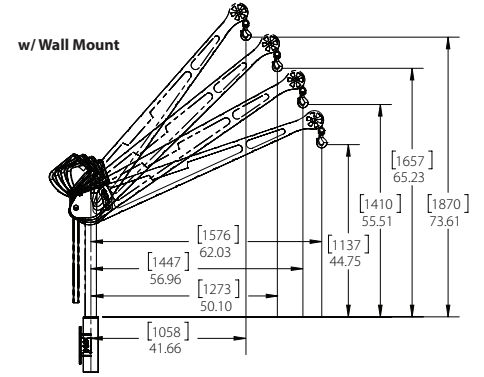
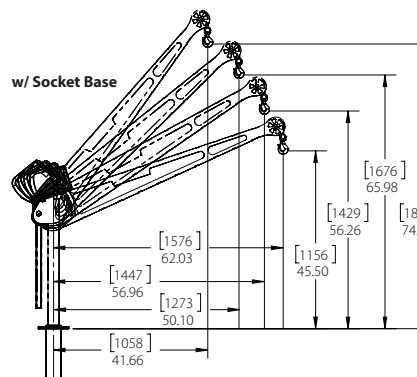
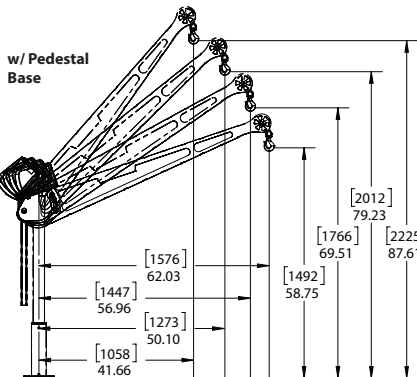


Manual winch w/drill drive adapter

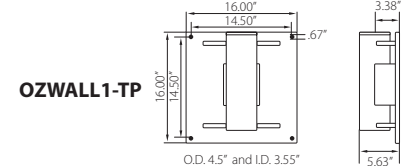
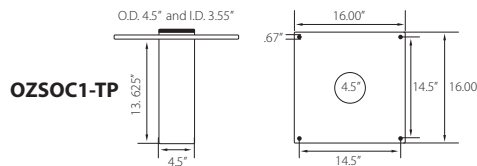
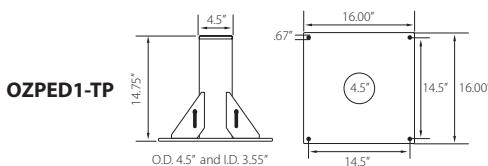


AC and DC power winches available
See page 26

OZXR1000DAV DIMENSIONS



OZXR1000DAV BASES (sold separately) Comes with mounting template.



Davit crane maintains maximum capacity in all positions. However, the listed load rating reflects manual winch operation, assuming average lifting effort. Handle effort will increase as the cable is spooled onto the drum. Load rating and ease of lifting depend on the specific winch style and the user's lifting effort. Dimensions and illustrations are for reference only and subject to change without notice.



TELE-PRO® DAVIT CRANE

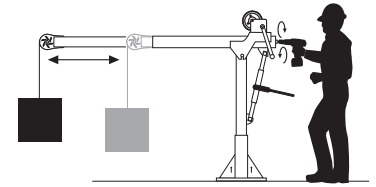
Individually tested and certified at 125% W.L.L. 

OZTP500DAV, OZTP1200DAV, OZTP2500DAV
[PATENTED]

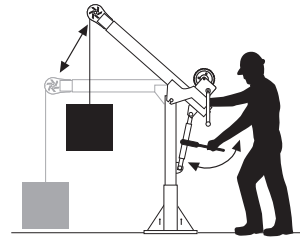


500 lb., 1200 lb. and 2500 lb. Capacity Features

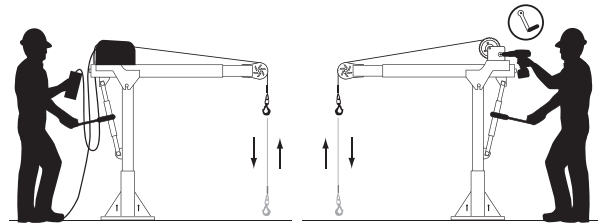
- Telescoping boom makes infinite adjustments while under load
- Smart Latch technology at boom/mast connection
- Durable, corrosion-resistant, exterior-grade powder coat finish
- Ratchet binder adjusts boom height under load
- Handle allows for precise control with 360-degree rotation
- No tools required for assembly and installation
- Manual DIN-rated CE winch with integrated Weston brake (Includes quick connect winch handle with drill drive adapter)
- AC & DC winch options available
- Pedestal, wall mount, socket, and wheel bases sold separately
- Individually tested and certified at 125%
- Made in USA



Telescoping boom can be adjusted using the winch handle or drill drive adapter



Ratchet binder adjusts boom under load



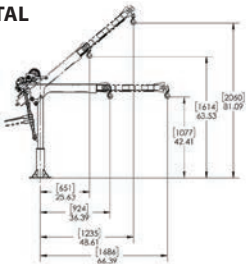
AC and DC power winches available
See page 26

Detach winch handle for drill option

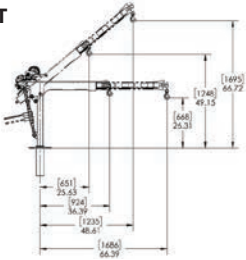
OZTP2500DAV shown with optional OZPED4 pedestal base and OZSR.31-45 synthetic rope assembly
Bases and cable assemblies sold separately

OZTP500DAV DIMENSIONS Horizontal and 45° Boom Position

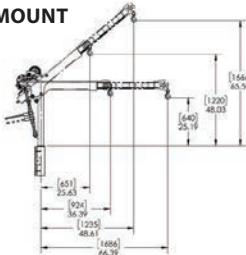
PEDESTAL BASE



SOCKET BASE

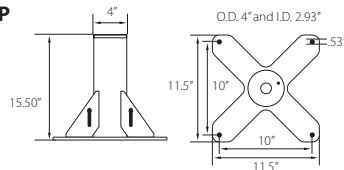


WALL-MOUNT BASE

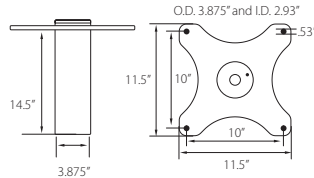


OZTP500DAV BASES (sold separately) Comes with mounting template.

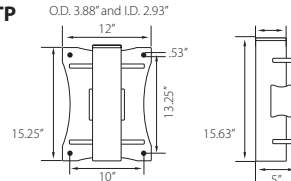
OZPED2-TP



OZSOC2-TP



OZWALL2-TP



WIRE/SYNTHETIC ROPE ASSEMBLIES

(sold separately) Custom cable length available.
All cable assemblies come with swaged ball and swivel hook with latch.

Manual winch: 3/16" - 80 ft max. lift length • 1/4" - 55ft max. lift length
AC/DC Electric Winch: 3/16" - 90 ft max. lift length • 1/4" - 45ft max. lift length
See wire & synthetic rope assemblies page 40

| Weight (excluding winch) | Boom | Mast | Net |
|--------------------------|------|------|-----|
| OZTP500DAV (lb.) | 88 | 23 | 111 |
| OZTP1200DAV (lb.) | 102 | 36 | 138 |
| OZTP2500DAV (lb.) | 288 | 62 | 350 |

OZTP500DAV LOAD RATINGS – Horizontal Boom Angle – Based on 3/16 inch wire or synthetic rope

| Load Ratings (lb.) | First Layer | Mid Drum | Full Drum |
|------------------------|-------------|----------|-----------|
| Boom Position 1 at 36° | 500 lb. | 500 lb. | 500 lb. |
| Boom Position 2 at 46° | 430 lb. | 430 lb. | 430 lb. |
| Boom Position 3 at 56° | 350 lb. | 350 lb. | 350 lb. |
| Boom Position 4 at 66° | 300 lb. | 300 lb. | 300 lb. |

OZTP500DAV LOAD RATINGS – 45° Boom Angle

– Based on 3/16 inch wire or synthetic rope

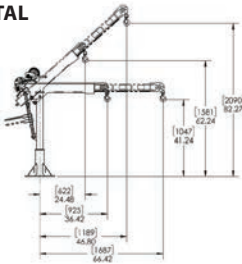
| Load Ratings (lb.) | First Layer | Mid Drum | Full Drum |
|------------------------|-------------|----------|-----------|
| Boom Position 1 at 23° | 500 lb. | 500 lb. | 500 lb. |
| Boom Position 2 at 30° | 500 lb. | 500 lb. | 500 lb. |
| Boom Position 3 at 37° | 500 lb. | 500 lb. | 500 lb. |
| Boom Position 4 at 44° | 450 lb. | 450 lb. | 450 lb. |

The listed load rating reflects the davit crane boom position as well as manual winch operation, assuming average lifting effort. Handle effort will increase as the cable is spooled onto the drum. Load rating and ease of lifting depend on the boom position, specific winch style, and the user's lifting effort. Dimensions and illustrations are for reference only and subject to change without notice.

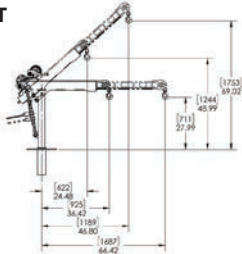


OZTP1200DAV DIMENSIONS
Horizontal and 45° Boom Position

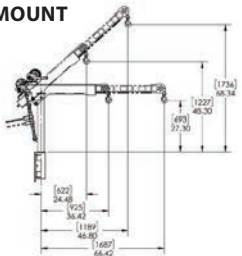
PEDESTAL BASE



SOCKET BASE

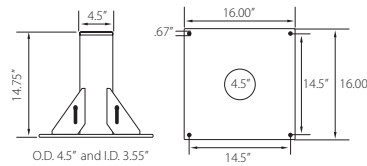


WALL-MOUNT BASE

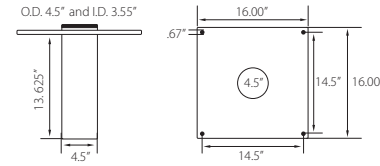


OZTP1200DAV BASES
(sold separately) Comes with mounting template.

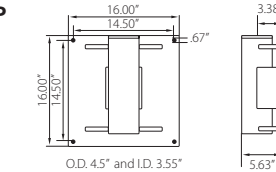
OZPED1-TP



OZSOC1-TP



OZWALL1-TP



OZTP1200DAV LOAD RATINGS - Horizontal Boom Angle
– Based on 3/16 inch wire rope

| Load Ratings (lb.) | First Layer | Mid Drum | Full Drum |
|------------------------|-------------|----------|-----------|
| Boom Position 1 at 36° | 800 lb. | 800 lb. | 550 lb. |
| Boom Position 2 at 46° | 800 lb. | 800 lb. | 550 lb. |
| Boom Position 3 at 56° | 750 lb. | 750 lb. | 550 lb. |
| Boom Position 4 at 66° | 650 lb. | 650 lb. | 550 lb. |

OZTP1200DAV LOAD RATINGS - 45° Boom Angle
– Based on 3/16 inch wire rope

| Load Ratings (lb.) | First Layer | Mid Drum | Full Drum |
|---------------------------|-------------|----------|-----------|
| Boom Position 1 at 23° | 800 lb. | 800 lb. | 550 lb. |
| Boom Position 2 at 30.25° | 800 lb. | 800 lb. | 550 lb. |
| Boom Position 3 at 37.25° | 800 lb. | 800 lb. | 550 lb. |
| Boom Position 4 at 44.5° | 800 lb. | 800 lb. | 550 lb. |

OZTP1200DAV LOAD RATINGS - Horizontal Boom Angle
– Based on 1/4 inch wire rope or 3/16 inch synthetic rope

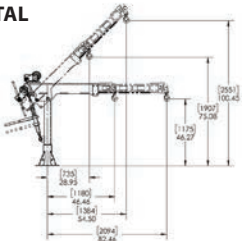
| Load Ratings (lb.) | First Layer | Mid Drum | Full Drum |
|------------------------|-------------|----------|-----------|
| Boom Position 1 at 36° | 1200 lb. | 875 lb. | 550 lb. |
| Boom Position 2 at 46° | 900 lb. | 875 lb. | 550 lb. |
| Boom Position 3 at 56° | 750 lb. | 750 lb. | 550 lb. |
| Boom Position 4 at 66° | 650 lb. | 650 lb. | 550 lb. |

OZTP1200DAV LOAD RATINGS - 45° Boom Angle
– Based on 1/4 inch wire rope or 3/16 inch synthetic rope

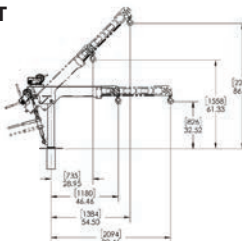
| Load Ratings (lb.) | First Layer | Mid Drum | Full Drum |
|---------------------------|-------------|----------|-----------|
| Boom Position 1 at 23° | 1200 lb. | 875 lb. | 550 lb. |
| Boom Position 2 at 30.25° | 1200 lb. | 875 lb. | 550 lb. |
| Boom Position 3 at 37.25° | 1100 lb. | 875 lb. | 550 lb. |
| Boom Position 4 at 44.5° | 950 lb. | 875 lb. | 550 lb. |

OZTP2500DAV DIMENSIONS
Horizontal and 45° Boom Position

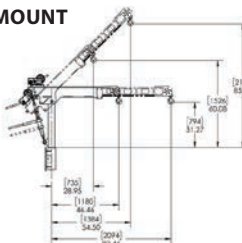
PEDESTAL BASE



SOCKET BASE

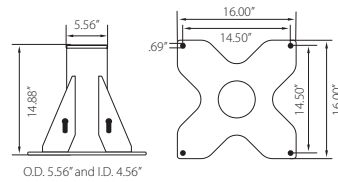


WALL-MOUNT BASE

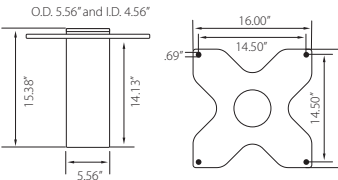


OZTP2500DAV BASES
(sold separately) Comes with mounting template.

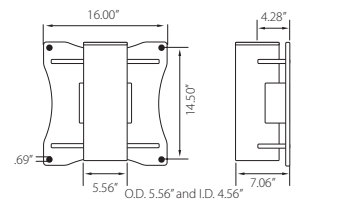
OZPED4



OZSOC4



OZWALL4



OZTP2500DAV LOAD RATINGS - Horizontal Boom Angle
– Based on 1/4 inch synthetic rope

| Load Ratings (lb.) | First Layer | Mid Drum | Full Drum |
|------------------------|-------------|----------|-----------|
| Boom Position 1 at 46° | 2000 lb. | 2000 lb. | 1550 lb. |
| Boom Position 2 at 58° | 1900 lb. | 1900 lb. | 1550 lb. |
| Boom Position 3 at 70° | 1600 lb. | 1600 lb. | 1550 lb. |
| Boom Position 4 at 82° | 1300 lb. | 1300 lb. | 1300 lb. |

OZTP2500DAV LOAD RATINGS - 45° Boom Angle
– Based on 1/4 inch synthetic rope

| Load Ratings (lb.) | First Layer | Mid Drum | Full Drum |
|--------------------------|-------------|----------|-----------|
| Boom Position 1 at 28° | 2000 lb. | 2000 lb. | 1550 lb. |
| Boom Position 2 at 37° | 2000 lb. | 2000 lb. | 1550 lb. |
| Boom Position 3 at 45.5° | 2000 lb. | 2000 lb. | 1550 lb. |
| Boom Position 4 at 54° | 2000 lb. | 2000 lb. | 1550 lb. |

OZTP2500DAV LOAD RATINGS - Horizontal Boom Angle
– Based on 3/8\"/>

| Load Ratings (lb.) | First Layer | Mid Drum | Full Drum |
|------------------------|-------------|----------|-----------|
| Boom Position 1 at 46° | 2500 lb. | 2015 lb. | 1550 lb. |
| Boom Position 2 at 58° | 1900 lb. | 1900 lb. | 1550 lb. |
| Boom Position 3 at 70° | 1600 lb. | 1600 lb. | 1550 lb. |
| Boom Position 4 at 82° | 1300 lb. | 1300 lb. | 1300 lb. |

OZTP2500DAV LOAD RATINGS - 45° Boom Angle
– Based on 3/8\"/>

| Load Ratings (lb.) | First Layer | Mid Drum | Full Drum |
|--------------------------|-------------|----------|-----------|
| Boom Position 1 at 28° | 2500 lb. | 2015 lb. | 1550 lb. |
| Boom Position 2 at 37° | 2500 lb. | 2015 lb. | 1550 lb. |
| Boom Position 3 at 45.5° | 2500 lb. | 2015 lb. | 1550 lb. |
| Boom Position 4 at 54° | 2000 lb. | 2000 lb. | 1550 lb. |

The listed load rating reflects the davit crane boom position as well as manual winch operation, assuming average lifting effort. Handle effort will increase as the cable is spooled onto the drum. Load rating and ease of lifting depend on the boom position, specific winch style, and the user's lifting effort. Dimensions and illustrations are for reference only and subject to change without notice.



COMPOZITE® DAVIT CRANE

Individually tested and certified at 125%



OZ1200DAV (PATENTED)



Boom Weight 43lb. (excluding winch)

Mast Weight 30lb.

Crane weighs only 83 lb. As Shown

1200 lb. Capacity Features

- **Boom/Extension and Mast Made of Advanced Composite Material**
- Light weight, about 40% lighter than steel
- Corrosion resistant
- Metal components mil-spec zinc plated
- External handle helps rotate crane under load
- 4 position boom
- Ratchet screw jack adjusts boom under load giving you infinite range of lift
- 360 degree rotation of crane on sleeve bearing
- No tools required for installation. One person setup.
- DIN-Rated hand winch equipped standard with a load holding weatherproof Weston brake (Cable assembly sold separately)
- Hand winch accepts two different cable termination points: swaged ball fitting or bare end cable
- Quick connect winch handle with power drill adapter included
- Smart Latch technology at boom/mast connection
- Headache Ball (OZHB10) available and sold separately. See page 34
- Carrying case (OZRB1) available and sold separately

OZ1200DAV shown with optional OZPED1 Pedestal base, OZSS.25-55B wire rope assembly, and OZHB10 headache ball

Bases, cable assemblies and headache ball sold separately

WIRE/SYNTHETIC ROPE ASSEMBLIES

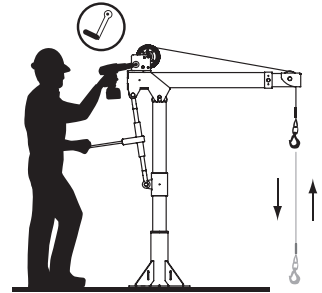
(sold separately) Custom length available.

See wire/synthetic rope assembly options page 39

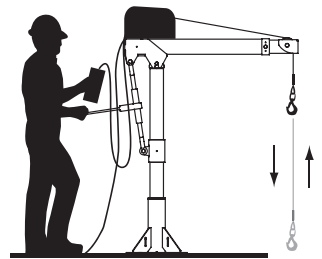
Manual winch: 3/16" - 80 ft max. lift length • 1/4" - 55ft max. lift length

AC/DC Electric Winch: 3/16" - 90 ft max. lift length • 1/4" - 45ft max. lift length

Options for faster lowering and raising



Detach winch handle for drill option



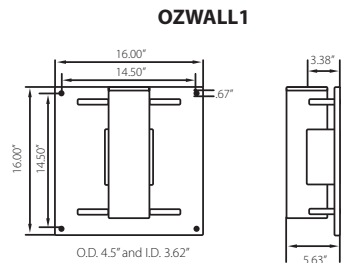
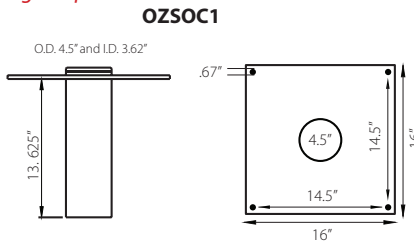
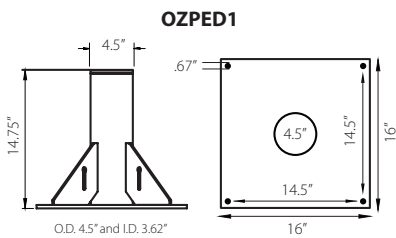
AC and DC power winches available See page 26

One person set up. No tools required for installation. Lightweight & Portable.

Weight

| Weight (excluding winch) | Boom | Mast | Net |
|--------------------------|------|------|-----|
| OZ1200DAV (lb.) | 43 | 30 | 73 |

OZ1200DAV BASES (sold separately) Comes with mounting template.



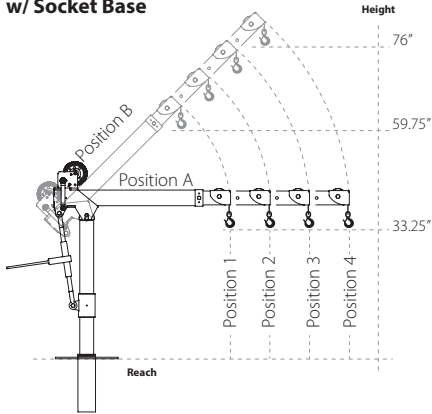
The listed load rating reflects the davit crane boom position as well as manual winch operation, assuming average lifting effort. Handle effort will increase as the cable is spooled onto the drum. Load rating and ease of lifting depend on the boom position, specific winch style, and the user's lifting effort. Dimensions and illustrations are for reference only and subject to change without notice.



OZ1200DAV DIMENSIONS Dimensions are for reference only and subject to change without notice.



w/ Socket Base



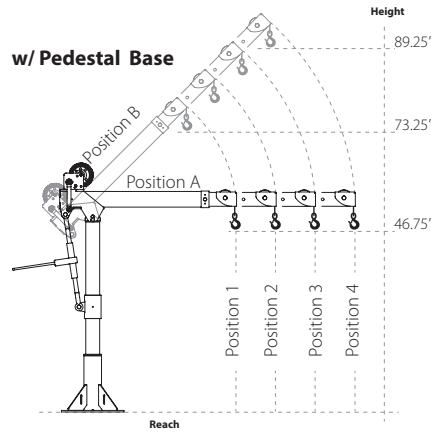
Boom Horizontal Position (A)

- Boom Position 1: Reach 36"
- Boom Position 2: Reach 46"
- Boom Position 3: Reach 56"
- Boom Position 4: Reach 66"

Boom 45° Position (B)

- Boom Position 1: Reach 22"
- Boom Position 2: Reach 29"
- Boom Position 3: Reach 36"
- Boom Position 4: Reach 43"

w/ Pedestal Base



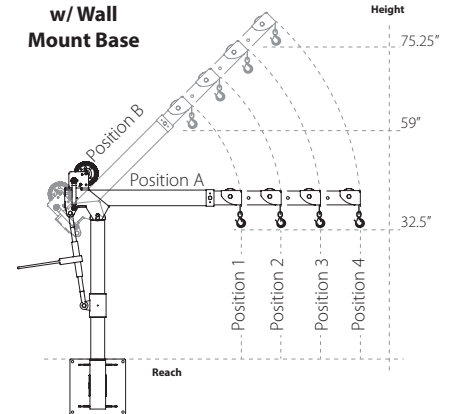
Boom Horizontal Position (A)

- Boom Position 1: Reach 36"
- Boom Position 2: Reach 46"
- Boom Position 3: Reach 56"
- Boom Position 4: Reach 66"

Boom 45° Position (B)

- Boom Position 1: Reach 22"
- Boom Position 2: Reach 29"
- Boom Position 3: Reach 36"
- Boom Position 4: Reach 43"

w/ Wall Mount Base

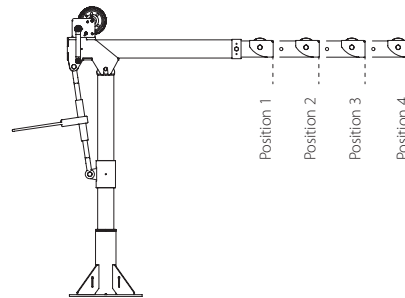


Boom Horizontal Position (A)

- Boom Position 1: Reach 36"
- Boom Position 2: Reach 46"
- Boom Position 3: Reach 56"
- Boom Position 4: Reach 66"

Boom 45° Position (B)

- Boom Position 1: Reach 22"
- Boom Position 2: Reach 29"
- Boom Position 3: Reach 36"
- Boom Position 4: Reach 43"



Load Ratings OZ1200DAV

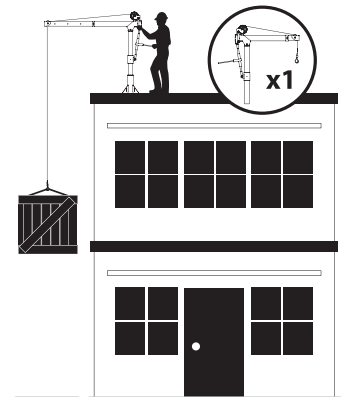
*Table based on 1/4 inch wire rope or 3/16" Synthetic Rope

| Load Ratings | First Layer | Mid Drum | Full Drum |
|------------------|-------------|----------|-----------|
| Position 1 (lb.) | 1200 | 875 | 550 |
| Position 2 (lb.) | 900 | 875 | 550 |
| Position 3 (lb.) | 700 | 700 | 550 |
| Position 4 (lb.) | 400 | 400 | 400 |

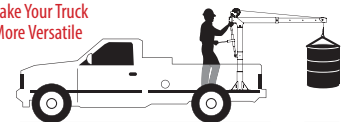
*Table based on 3/16" wire rope

| Load Ratings | First Layer | Mid Drum | Full Drum |
|------------------|-------------|----------|-----------|
| Position 1 (lb.) | 800 | 800 | 550 |
| Position 2 (lb.) | 800 | 800 | 550 |
| Position 3 (lb.) | 700 | 700 | 550 |
| Position 4 (lb.) | 400 | 400 | 400 |

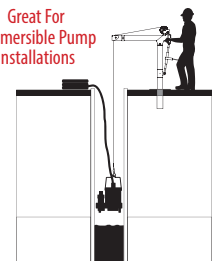
Designed for use in multiple workstations. Buy one crane and multiple bases.



Make Your Truck More Versatile



Great For Submersible Pump Installations



The listed load rating reflects the davit crane boom position as well as manual winch operation, assuming average lifting effort. Handle effort will increase as the cable is spooled onto the drum. Load rating and ease of lifting depend on the boom position, specific winch style, and the user's lifting effort. Dimensions and illustrations are for reference only and subject to change without notice.

STEEL DAVIT CRANE

Individually tested and certified at 125% W.L.L

OZ500DAV, OZ1000DAV, OZ2500DAV



500 lb., 1000 lb. and 2500 lb. Capacity

Features

- 360 degree rotation
- 4 different boom height adjustments
- 500, 1000, and 2500 lb. ratings available
- Manual Din rated CE winch with brake (Includes power drill adapter)
- Corrosion Resistant Zinc plated finish
- Headache Ball (OZHB10) available and sold separately
- Carrying case (OZRB1) available and sold separately

OZ1000DAV shown with optional OZPED2 Pedestal base and OZGAL.25-55B wire rope assembly
Bases and cable assemblies sold separately

WIRE/SYNTHETIC ROPE ASSEMBLIES

(sold separately) Custom length available.
See wire/synthetic rope assembly options page 39

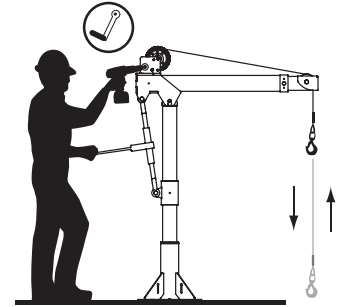
OZ500DAV & OZ1000DAV

Manual winch: 3/16" - 80 ft max. lift length • 1/4" - 55ft max. lift length
AC/DC Electric Winch: 3/16" - 90 ft max. lift length • 1/4" - 45ft max. lift length

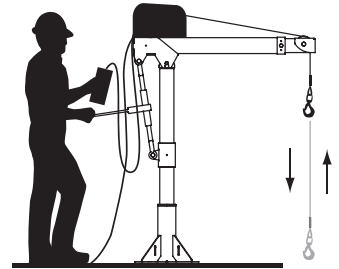
OZ2500DAV

Manual winch: 1/4" Synthetic - 75 ft max. lift length • 5/16" Synthetic - 55ft max. lift length • 3/8" Synthetic - 45ft max. lift length

Options for faster lowering and raising



Detach winch handle for drill option

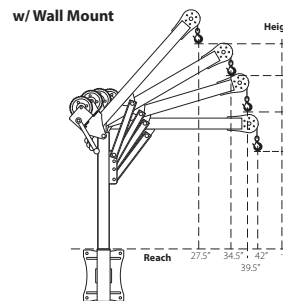
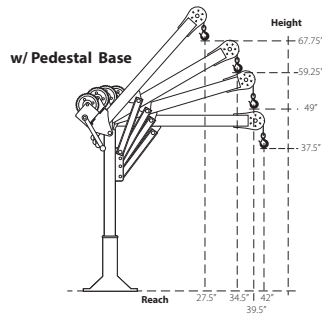
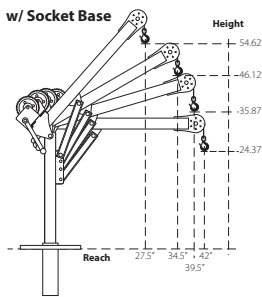


AC and DC power winches available
See page 26

Weight

| Weight (excluding winch) | Boom | Mast | Net |
|--------------------------|------|------|-----|
| OZ500DAV (lb.) | 27 | 23 | 50 |
| OZ1000DAV (lb.) | 35 | 29 | 64 |
| OZ2500DAV (lb.) | 130 | 64 | 194 |

OZ500DAV DIMENSIONS

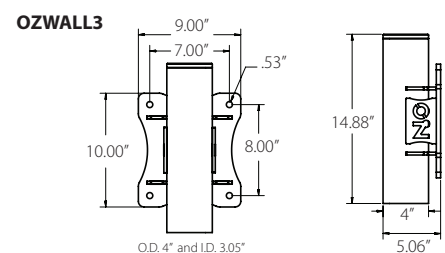
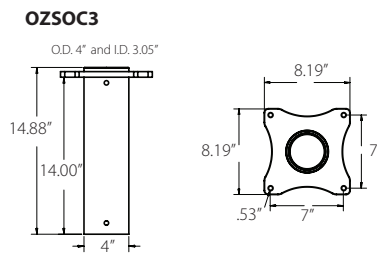
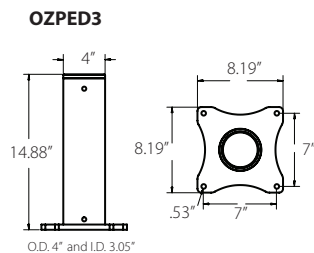


Load Ratings

*OZ500DAV based on 3/16" or 5/16" wire & synthetic rope

| All Positions | |
|---------------|---------|
| First Layer | 500 lb. |
| Mid Drum | 500 lb. |
| Full Drum | 500 lb. |

OZ500DAV BASES (sold separately) Comes with mounting template.



Davit crane maintains maximum capacity in all positions. However, the listed load rating reflects manual winch operation, assuming average lifting effort. Handle effort will increase as the cable is spooled onto the drum. Load rating and ease of lifting depend on the specific winch style and the user's lifting effort. Dimensions and illustrations are for reference only and subject to change without notice.

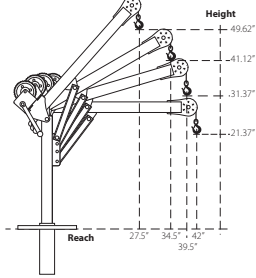


WARNING
CANCER AND REPRODUCTIVE HARM
Some products may contain chemicals known to the state of California to cause cancer, or birth defect or reproductive harm.
www.P65Warning.ca.gov

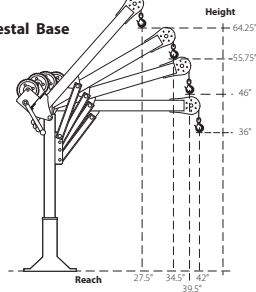


OZ1000DAV DIMENSIONS

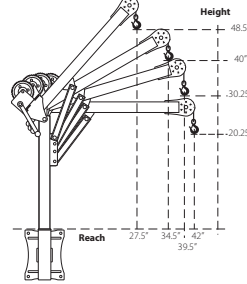
w/ Socket Base



w/ Pedestal Base



w/ Wall Mount



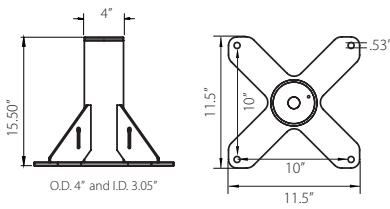
Load Ratings

*OZ1000DAV based on 1/4" wire & 3/16" synthetic rope

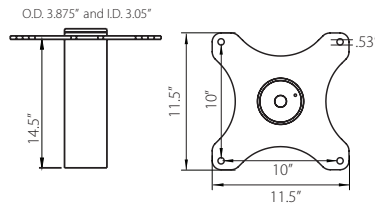
| All Positions | |
|---------------|----------|
| First Layer | 1000 lb. |
| Mid Drum | 875 lb. |
| Full Drum | 550 lb. |

OZ1000DAV BASES (sold separately) *Base inside diameter 3.0" • Comes with mounting template.

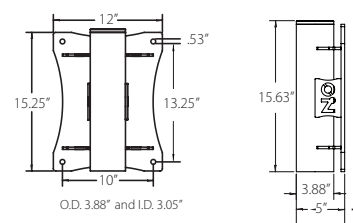
OZPED2



OZSOC2

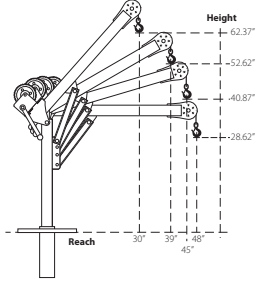


OZWALL2

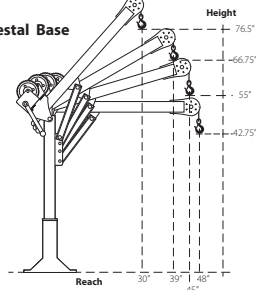


OZ2500DAV DIMENSIONS

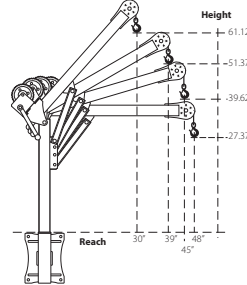
w/ Socket Base



w/ Pedestal Base



w/ Wall Mount



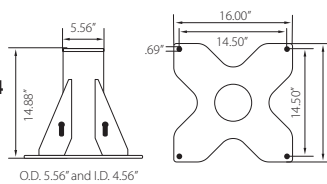
Load Ratings

*OZ2500DAV based on 3/8" synthetic rope

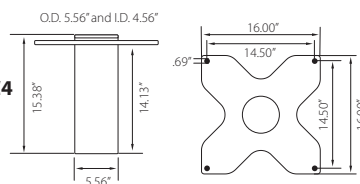
| All Positions | |
|---------------|----------|
| First Layer | 2500 lb. |
| Mid Drum | 2000 lb. |
| Full Drum | 1550 lb. |

OZ2500DAV BASES (sold separately) *Base inside diameter 4.5" • Comes with mounting template.

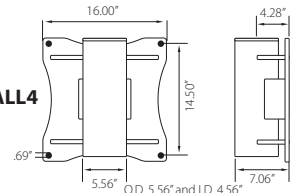
OZPED4



OZSOC4



OZWALL4



Davit crane maintains maximum capacity in all positions. However, the listed load rating reflects manual winch operation, assuming average lifting effort. Handle effort will increase as the cable is spooled onto the drum. Load rating and ease of lifting depend on the specific winch style and the user's lifting effort. Dimensions and illustrations are for reference only and subject to change without notice.

WARNING
CANCER AND REPRODUCTIVE HARM
Some products may contain chemicals known to the state of California to cause cancer or birth defect or reproductive harm.
www.P65Warning.ca.gov

COMPOZITE ELITE® DAVIT CRANE

Individually tested and certified at 125% W.L.L



OZCF1200DAV



Ultra lightweight & portable

1200 lb. Capacity

Features

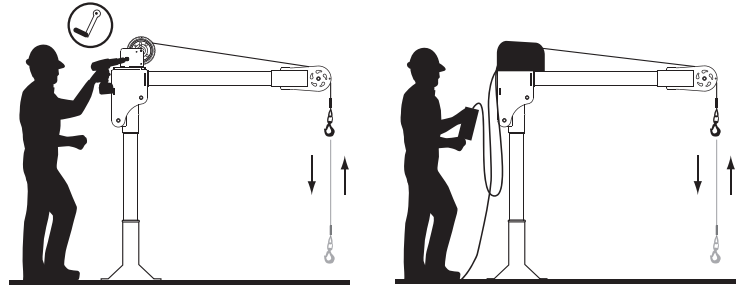
- Carbon fiber / High-strength aluminum construction
- Corrosion Resistant Finish
- Truly Portable Design
- One-Person Assembly (No Tools Needed)
- Manual Din rated CE winch with brake (Includes power drill adapter)
- Synthetic Rope Assembly Available
- Headache Ball (OZHB10) available and sold separately
- Carrying case (OZRB1) available and sold separately

WIRE/SYNTHETIC ROPE ASSEMBLIES

(sold separately) Custom length available.

See wire/synthetic rope assembly options page 38

Options for faster lowering and raising



Manual winch w/drill drive adapter

AC and DC power winches available
See page 26

Weight

| Weight (excluding winch) | Boom | Mast | Net |
|--------------------------|------|------|-----|
| OZFC1200DAV (lb.) | 18 | 13 | 31 |

Load Ratings (lb.)

Based on 1/4" wire or 3/16 synthetic rope

| | First Layer | Mid Drum | Full Drum |
|---------------------|-------------|----------|-----------|
| Position 1 (0°) | 500 | 500 | 500 |
| Position 2 (+22.5°) | 700 | 700 | 550 |
| Position 3 (+45°) | 1200 | 875 | 550 |

Manual winch: 3/16" - 80 ft max. lift length • 1/4" - 55ft max. lift length

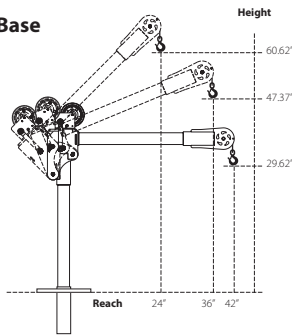
AC/DC Electric Winch: 3/16" - 90 ft max. lift length • 1/4" - 45ft max. lift length

See wire & synthetic rope assembly options page 38

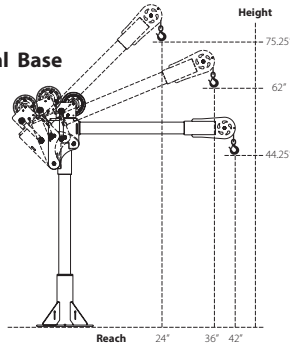
OZ1000DAV shown with optional OZPED2 Pedestal base and OZGAL.25-55B wire rope assembly
Bases and cable assemblies sold separately

OZCF1200DAV DIMENSIONS

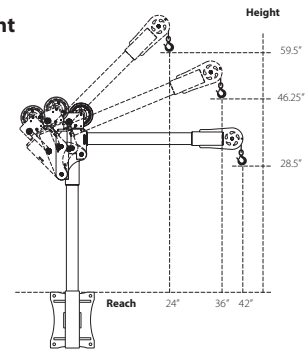
w/ Socket Base



w/ Pedestal Base

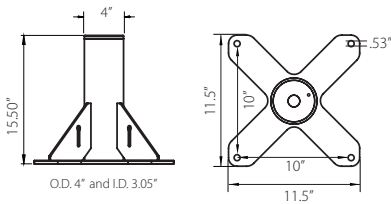


w/ Wall Mount

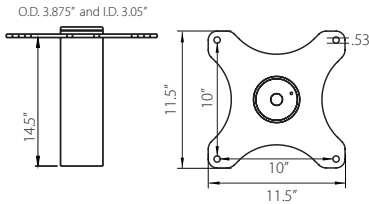


OZCF1200DAV BASES (sold separately) Comes with mounting template.

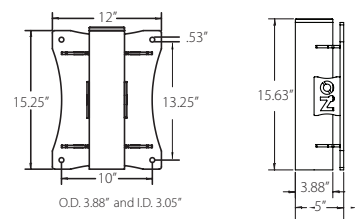
OZPED2



OZSOC2



OZWALL2



Davit crane maintains maximum capacity in all positions. However, the listed load rating reflects manual winch operation, assuming average lifting effort. Handle effort will increase as the cable is spooled onto the drum. Load rating and ease of lifting depend on the specific winch style and the user's lifting effort. Dimensions and illustrations are for reference only and subject to change without notice.



WHEEL BASE

For all OZ Lifting Products davit cranes up to 1200 lb. capacity



OZWB3 shown with OZXR500
OZGAL.19-80B galvanized cable assembly
OZHB10 10lb. headache ball
Davit crane, headache ball, and cable assemblies sold separately.
Locking collar included with applicable wheel base kits.

Features

- Industrial strength steel construction with a durable powder-coat finish
- Patent-pending floor-anchoring system allows the davit to rotate while under load (when base is not anchored the davit must remain in a forward position when lifting)
- Durable polyurethane-tread indoor/outdoor wheels with rear swivel casters, ensuring smooth mobility and adaptability to various workspaces. Rear casters feature a lock brake for enhanced safety and stability when needed.
- Forklift pockets (for transporting only)

Includes

Floor-Anchor Mounting Bolt Kit: Enhance the stability and safety of your OZ Wheel Base with optional floor-anchoring bolts, ensuring secure attachment to the ground for added peace of mind during operation. Includes four (4) 12" zinc-plated hex head bolts and washers. *Concrete anchor not included.*

Davit Crane Locking Collar: This component effectively prevents the crane boom from rotating excessively, eliminating the risk of tipping hazards and ensuring a secure lifting environment. *Included with models OZWB1, OZWB1-TP, OZWB2, OZWB2-TP, and OZWB3.*

Toolbox Storage Tube: Keep your tools and Wheel Base accessories organized with this durable and versatile toolbox storage tube, molded from high-density polypropylene and featuring a secure screw-cap and latch closure for secure storage. Zip ties are included for convenient, versatile mounting.

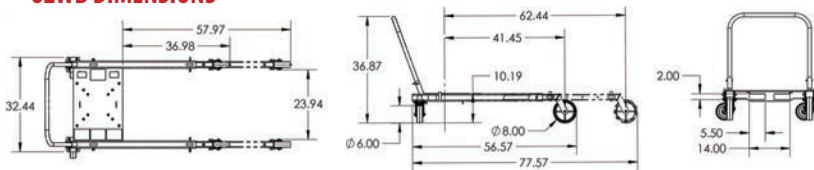
**Davit crane sold separately*

Patent-Pending Floor-Anchoring System with Locking Collar

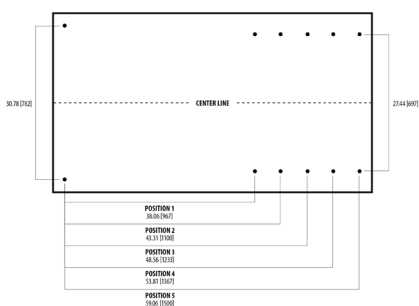


- OZWB** Wheel Base for OZ Lifting Products davit cranes up to 1200 lb. capacity (pedestal base and locking collar not included)
- OZWB1** Wheel Base for use with OZ1200DAV davit crane (pedestal base and locking collar included)
- OZWB1-TP** Wheel Base for use with OZTP1200DAV, OZA1000DAV, OZXR1000DAV davit cranes (pedestal base and locking collar included)
- OZWB2** Wheel Base for use with OZ1000DAV and OZCF1200DAV davit cranes (pedestal base and locking collar included)
- OZWB2-TP** Wheel Base for use with OZTP500DAV davit crane (pedestal base and locking collar included)
- OZWB3** Wheel Base for use with OZ500DAV, OZA500DAV and OZXR500DAV davit cranes (pedestal base and locking collar included)

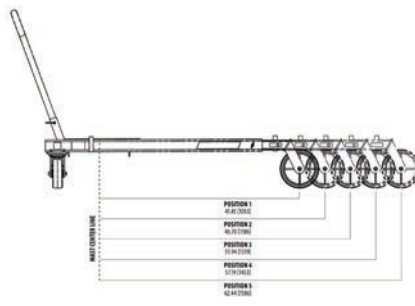
OZWB DIMENSIONS



ADJUSTABLE LEG EXTENSIONS



FLOOR-ANCHORING SYSTEM



OZWB DAVIT CRANE REACH DIAMETER

Sections are representative of hook reach in 360-degrees

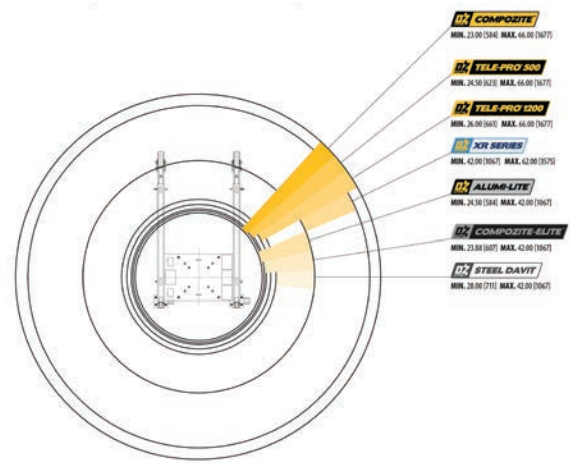


Diagram dimensional values are provided in inches. Bracketed values [] within diagram represent equivalent measurements in millimeters for informational purposes only. Dimensions and illustrations are for reference only and subject to change without notice.





APPLICATION DATA SHEET | DAVIT CRANES

Company Name: _____ Contact Name: _____

Email Address: _____ Phone: _____

Address: _____ City: _____ State: _____ Zip Code: _____

Job Description: _____

Weight of Load: _____

Length of Lift: _____

Davit Arm Reach: _____

What Capacity Do You Need and at What Reach?

Height Requirement:

Winch:

- Hand
- 115V AC
- 12V DC

Rope Material:

- Galvanized
- Stainless Steel
- Synthetic

Base Requirements:

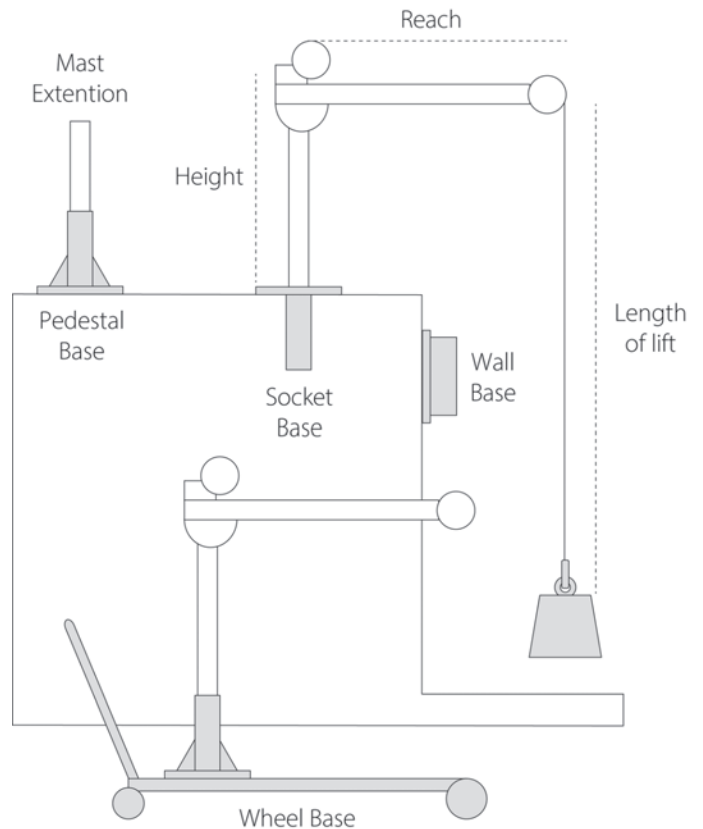
- Pedestal
- Socket
- Wall Mount
- Wheel

Optional Accessories:

- Mast Extension
- Headache Ball
- Weatherproof Winch Cover
- Weatherproof Davit Cover
- Locking Collar
- Wire Rope Holder
- Davit Crane Roller Bag

What Is The Application/Environment?

How Did You Hear About Us? _____



Purchaser is responsible for proper base installation. Approval from a civil or structural engineer is recommended for base installation.

OZ Lifting Products davit cranes are thoroughly inspected and tested using a predetermined load. Test certificate included. Base, wire/synthetic rope assembly, and accessories sold separately.

Load rating of davit cranes may vary depending on position of boom, wire/synthetic rope length, and winch being used.

OZ Lifting Products equipment is not for lifting people or lifting objects over people.

If you have any questions about this form, need assistance selecting the right davit crane for your needs, or require a more in-depth consultation, our lifting experts are happy to help! Contact us today to schedule a personalized consultation with a davit crane specialist.

WIRE/SYNTHETIC ROPE ASSEMBLIES

Steel Wire Rope (For manual winch)

| | | |
|--------------|-------------|--------------------------------|
| OZGAL.19-80B | 3/16" x 80' | Galvanized cable assembly |
| OZSS.19-80B | 3/16" x 80' | Stainless steel cable assembly |
| OZGAL.25-55B | 1/4" x 55' | Galvanized cable assembly |
| OZSS.25-55B | 1/4" x 55' | Stainless steel cable assembly |

Above cable assemblies come with swaged ball and swivel hook with latch.

Custom cable length available.

3/16" - 80 ft. max. length • 1/4" - 55 ft. max. length

Steel Wire Rope (For manual and power winch)

| | | |
|-------------|-------------|--------------------------------|
| OZGAL.19-90 | 3/16" x 90' | Galvanized cable assembly |
| OZSS.19-90 | 3/16" x 90' | Stainless steel cable assembly |
| OZGAL.25-45 | 1/4" x 45' | Galvanized cable assembly |
| OZSS.25-45 | 1/4" x 45' | Stainless Steel cable assembly |

All cable assemblies come with a swivel hook with latch.

Custom cable length available.

3/16" - 90 ft. max. length • 1/4" - 45 ft. max. length

Synthetic Rope

| | | |
|------------|-------------|----------------|
| OZSR.19-15 | 3/16" x 15' | Synthetic Rope |
| OZSR.19-50 | 3/16" x 50' | Synthetic Rope |
| OZSR.19-90 | 3/16" x 90' | Synthetic Rope |
| OZSR.25-50 | 1/4" x 50' | Synthetic Rope |
| OZSR.25-75 | 1/4" x 75' | Synthetic Rope |
| OZSR.31-45 | 5/16" x 45' | Synthetic Rope |

All synthetic rope assemblies come with looped ends and pre-installed swivel hook with latch



HEADACHE BALL

OZHB10

Keeps your wire rope tensioned even when lowering the hook with no load. Compatible with 3/16" and 1/4" wire rope assemblies. Headache balls sold separately from all davit cranes and wire rope assemblies.



WIRE ROPE HOLDER

OZWRH

Secure your davit crane's wire rope with our durable and easy-to-use wire rope holder. For use with 3/16" and 1/4" ball end wire rope.



WINCH COVER

OZECW



This weatherproof winch cover provides additional protection, keeping your electric winch clean, dry, and looking new. It is specially treated for cold weather use and is made from strong, water-resistant, black vinyl, featuring drawstring for quick closure and cable opening for easy installation. Made in the USA.





DAVIT CRANE COVER

OZDAV-C1

Protect your davit crane from the elements with this waterproof cover. Compatible with all OZ Lifting Products davit cranes 1200 lb. capacity or less excluding the XR series.



DAVIT CRANE MAST EXTENSION

OZEXT1-COMP, OZEXT1-TP, OZEXT2, OZEXT2-TP

Increase the height of your davit crane with our durable and easy-to-install mast extender. This extender is made of high-strength steel and is available in a variety of lengths to fit most davit cranes. Add 24 inches of additional height to your davit crane with this simple and effective solution.



DAVIT CRANE LOCKING COLLAR



TP500-LC, TP1200-LC, SCF-LC

Keep your davit crane secure and prevent accidental rotation with our durable and easy-to-use locking collar.



DAVIT CRANE ROLLER BAG

OZRB1

The OZ Lifting Products davit crane roller bag is a durable and convenient way to transport and protect your davit crane. Made of heavy-duty nylon, the bag features a padded interior and reinforced straps to keep your crane safe from scratches and dings. Plus, the convenient roller wheels make it easy to move your crane around. The bag also has a large capacity, so you can easily fit all of your crane's accessories inside.





800.749.1064
ozliftingproducts.com



Corporate Office:

OZ Lifting Products
5455 W 6th St.
Winona, MN 55987
Tf: (800) 749-1064

Sales/Tech Support:

Ph: (507) 474-6250
Tf: (800) 749-1064
Fx: (507) 452-5217
sales@ozliftingproducts.com

Email Orders to:

sales@ozliftingproducts.com

Payment Remit to:

OZ Lifting Products
P.O. Box 845
Winona, MN 55987

