

# **LIFTING PRODUCTS**



 **PREMIUM**

 **INDUSTRIAL**

 **DYNO-HOIST**

 **ELECTRIC  
SERIES**

 **COMPOZITE-ELITE**

 **CLAMPS & TROLLEYS**

 **FALL PROTECTION**

 **TELE-PRO**

 **XR SERIES**

 **STEEL DAVIT**

 **COMPOZITE**

 **ALUMI-LITE**

 **WHEEL BASE**

 **SPARK RESISTANT  
SERIES**

 **STAINLESS  
SERIES**

# WHY OZ LIFTING PRODUCTS®?



## Service

From the first phone call to service after the sale, we carefully manage all aspects of your order. Our standard product can be quoted immediately allowing us to get you the product you need, when you need it. Customer satisfaction is our number one priority. Our team is committed to providing you the service you deserve.



## No Order Minimums

No required minimum quantity orders.



## Quick Ship

Our quick ship program contains our most common items, many of which are used in the building and construction industries where quick turnaround solutions are required. In-stock items ship in 2-3 business days with same day shipping available by request and with an additional fee.



## Made in the USA

We offer a full range of new and innovative lifting products designed and manufactured in the United States.



## Tested in the USA

At OZ Lifting Products®, our customers expect products that have endured advanced testing and rigorous inspection to ensure many years of operation. Our quality control and testing is unmatched. Our products meet and exceed expectations in regards to safety, performance, durability and customer satisfaction. Our products adhere to the ASME, ANSI, AS, OSHA and CE standards keeping you and your equipment safe.



## Test Certificate

A test certificate is included with each product and ensures the product has been load tested. An individual serial number provides complete traceability throughout the manufacturing process.



## Overload Protected

Our overload protection is standard on all of our premium hoists and select electric series models. The overload protection is integral to the product and prevents the operator from overloading the hoist. The overload resets itself and the hoist can go right back into service. Every product featuring overload is tested at our facility in Minnesota by certified OZ technicians to guarantee product performance.



## Custom Length of Lift

We offer custom lengths of lifts on all of our products. Standard or custom length, we have a solution.



## Parts

Replacement parts are available for most OZ products. Please use our parts request form at [www.ozliftingproducts.com/parts](http://www.ozliftingproducts.com/parts).



## Patented



## Trademark



## Warranty

# CARBON STEEL & STAINLESS STEEL BRAKE WINCHES



## Features

- Compact design
- Automatic weatherproof Weston-style brake
- Ergonomic rubber handle
- High gear ratio
- Multiple frame mounting positions

- Test certificate & serial number
- Solid machined gear
- For lifting or pulling/tensioning
- Dual cable anchor point

- Left hand version of stainless steel winch (OZ1000BWSS-LH) stainless steel. Optional on carbon steel

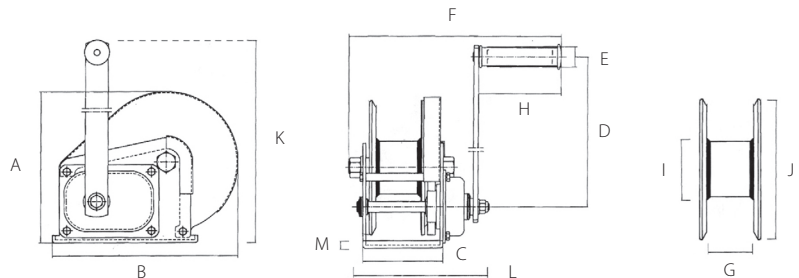
## Standard - CE



Cable/Drum Capacity	First Layer (ft)	Mid drum (ft)	Full drum (ft)
OZ1000BW – OZ1000BWSS using 1/8" wire rope	7	61	165
OZ1000BW – OZ1000BWSS using 3/16" wire rope	5	28	75
OZ1500BW – OZ1500BWSS using 3/16" wire rope	6	55	149
OZ1500BW – OZ1500BWSS using 1/4" wire rope	5	30	80
OZ2000BW – OZ2000BWSS using 1/4" wire rope	7	32	80
OZ2000BW – OZ2000BWSS using 5/16" wire rope	6	22	53
OZWINHND1 – 3/16" wire rope	11	40	80
OZWINHND1 – 1/4" wire rope	8	27	55
OZWINHND2 – 5/16" wire rope	7	42	45

Load Capacity (lb. - based on the amount of wire rope)			
OZ1000BW – OZ1000BWSS	1000	750	500
OZ1500BW – OZ1500BWSS	1500	1250	750
OZ2000BW – OZ2000BWSS	2000	1500	1000
OZWINHND1	1200	875	550
OZWINHND2	2500	2000	1550

\*Wire rope not included - see available options page 39



	OZ1000BW	OZ1000BWSS	OZ1500BW – OZ1500BWSS	OZ2000BW – OZ2000BWSS	OZWINHND1	OZWINHND2	
Capacity (lb.)	1000	1000	1500	2000	1200	2500	
Gear Ratio	4.2:1	4.2:1	5:1	10:1	5.4:1	17.3:1	
Dimensions (in)	A	6.22	6.22	7.73	8.35	6.75	6.95
	B	7.20	7.20	9.36	11.10	7.50	11.42
	C	3.46	3.46	4.21	5.00	3.89	5.56
	D	8.26	8.26	12.68	12.99	7.00	12.33
	E	1.06	1.06	1.06	1.06	1.15	1.39
	F	10.43	10.43	10.63	11.81	10.72	13.64
	G	1.98	1.98	2.30	2.52	2.03	2.42
	H	4.29	4.29	4.29	4.29	4.00	4.00
	I	1.59	1.98	2.38	3.00	2.50	2.50
	J	5.33	5.33	7.00	7.09	6.17	6.16
	K	10.20	10.20	15.31	15.35	11.89	17.48
	L	5.98	5.98	6.89	7.87	5.61	8.86
	M	0.12	0.12	0.14	0.16	0.15	0.25
Net Weight (lb.)	8.00	8.00	17.00	22.00	10.00	24.00	

Left Handed Stainless Steel OZ1000BWSS-LH



**WARNING**  
**CANCER AND REPRODUCTIVE HARM**  
 Some products may contain chemicals known to the state of California to cause cancer, or birth defect or reproductive harm.  
[www.P65Warning.ca.gov](http://www.P65Warning.ca.gov)

Dimensions and illustrations are for reference only and subject to change without notice.



# AC & DC ELECTRIC WINCHES



## Features

- Two-braking system mechanical and dynamic
- Fully-enclosed gearing
- Machine cut and hardened gears
- Lightweight
- Emergency handle
- Easily bolts on to OZ davit cranes

\* Wire or synthetic rope assembly sold separately

## Capacity

OZACW (115V AC): 1200 lb.  
OZDCW (12V DC): 1200 lb.

## Net Weight

OZACW – 22 lb.  
OZDCW – 24 lb.

## Maximum Drum Capacity

3/16" diameter wire rope=90' lift  
1/4" diameter wire rope=45' lift

## Pendant/ Power Cord Length

115V AC: 10' Pendant  
10' Power Cord  
12V DC: 10' Pendant  
25' (+) Power Lead

## Motor Full Load AMPS

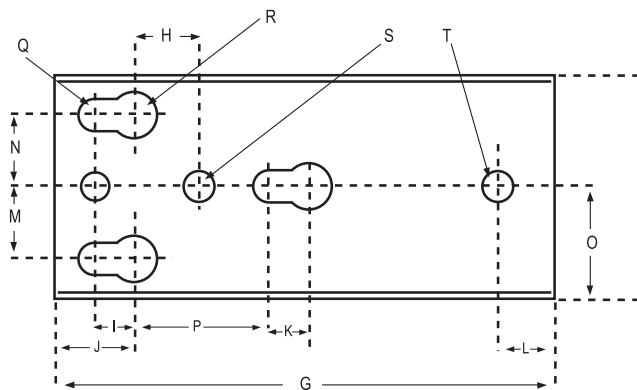
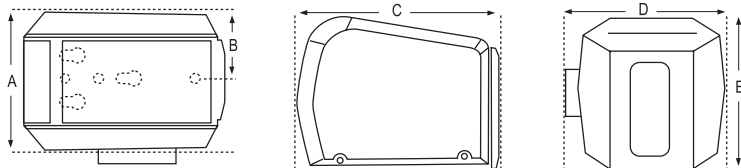
OZACW – 1.0 HP      OZACW – 10A  
OZDCW – 0.6 HP      OZDCW – 70A



Load Capacity Based on the Amount of Cable	3/16" Cable	1/4" Cable
First Layer (lb.)	800	1200
Mid Drum (lb.)	800	1120
Full (lb.)	800	850

Winch Speed Based on Load & Cable on the Drum	First Layer	Full
AC, No Load (ft/min)	23	35
AC, Full Load (ft/min)	12	16
DC, No Load (ft/min)	21	33
DC, Full Load (ft/min)	5.5	8



## Mounting Plate

Dimensions – All Models (in)		Mounting Plate Dimensions – All Models (in)					
A	7.43	F	3.62	K	.62	P	3
B	3.57	G	8.68	L	1	Q	.53
C	10.81	H	1.18	M	1.25	R	.78
D	8.18	I	.625	N	1.25	S	.42
E	8.12	J	1.37	O	1.81	T	.50

Dimensions and illustrations are for reference only and subject to change without notice.



# ALUMI-LITE® DAVIT CRANE

Individually tested and certified at 125% W.L.L



OZA500DAV, OZA1000DAV



## Options for faster lowering and raising

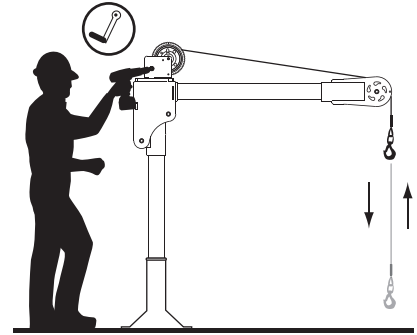


**500 lb. and  
1,000 lb. Capacity**

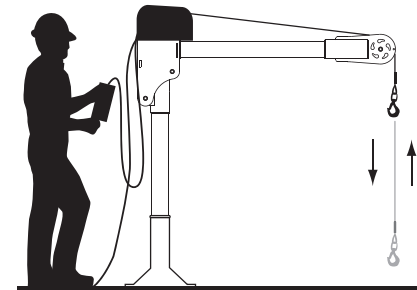
### Features

- Lightweight aerospace grade aluminum construction
- 360 degree rotation
- 3 different boom height adjustments
- Durable powder coat finish
- Truly Portable Design
- One-Person Assembly (No Tools Needed)
- Manual Din rated CE winch with brake (Includes power drill adapter)
- AC & DC winch options

OZA500DAV shown with optional  
OZPED3 Pedestal base and  
OZGAL.19-50B galvanized wire rope assembly  
and OZHB10 headache ball  
Bases, cable assemblies and headache ball sold separately



Manual winch w/drill drive adapter



AC and DC power winches available  
See page 26

### Weight

Weight (excluding winch)	Boom	Mast	Net
OZA500DAV (lb.)	12	12	24
OZA1000DAV (lb.)	25	22	47

### WIRE/SYNTHETIC ROPE ASSEMBLIES

(sold separately) Custom length available.

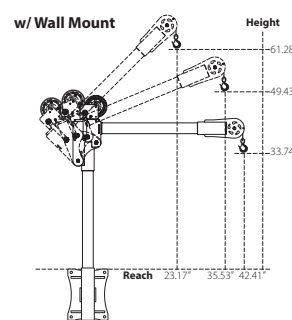
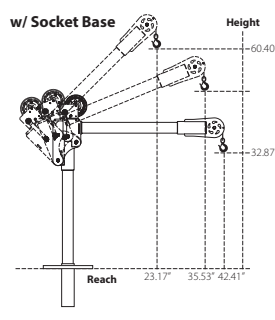
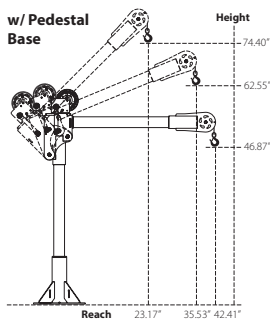
Manual winch: 3/16" - 80 ft max. lift length  
AC/DC Electric Winch: 3/16" - 90 ft max. lift length  
See wire & synthetic rope assembly options page 39

### OZA500DAV Load Ratings (lb.)

Based on 3/16" wire rope

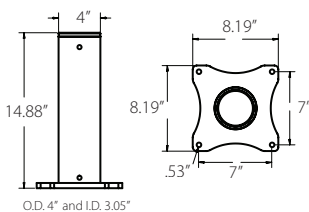
	First Layer	Mid Drum	Full Drum
Position 1 (0°)	275	275	275
Position 2 (+22.5°)	330	330	330
Position 3 (+45°)	500	500	500

### OZA500DAV DIMENSIONS

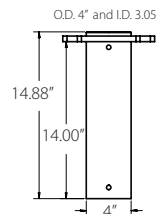


### OZA500DAV BASES (sold separately) Comes with mounting template.

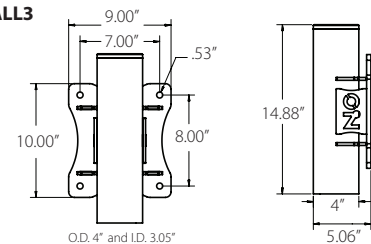
#### OZPED3



#### OZSOC3



#### OZWALL3



The listed load rating reflects the davit crane boom position as well as manual winch operation, assuming average lifting effort. Handle effort will increase as the cable is spooled onto the drum. Load rating and ease of lifting depend on the boom position, specific winch style, and the user's lifting effort. Dimensions and illustrations are for reference only and subject to change without notice.

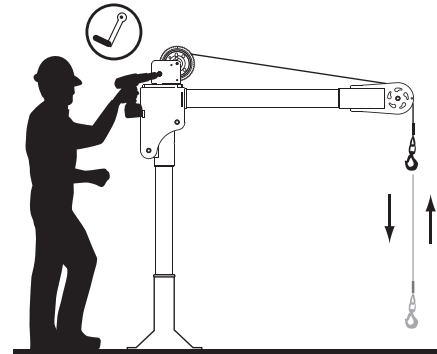


**WARNING**  
CANCER AND REPRODUCTIVE HARM  
Some products may contain chemicals known to the state of California to cause cancer, or birth defect or reproductive harm.  
www.P65Warning.ca.gov

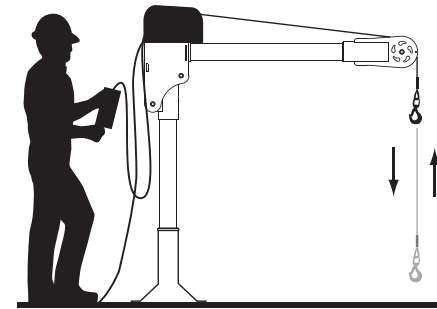




## Options for faster lowering and raising



Manual winch w/drill drive adapter



AC and DC power winches available  
See page 26

### WIRE/SYNTHETIC ROPE ASSEMBLIES (sold separately) Custom length available.

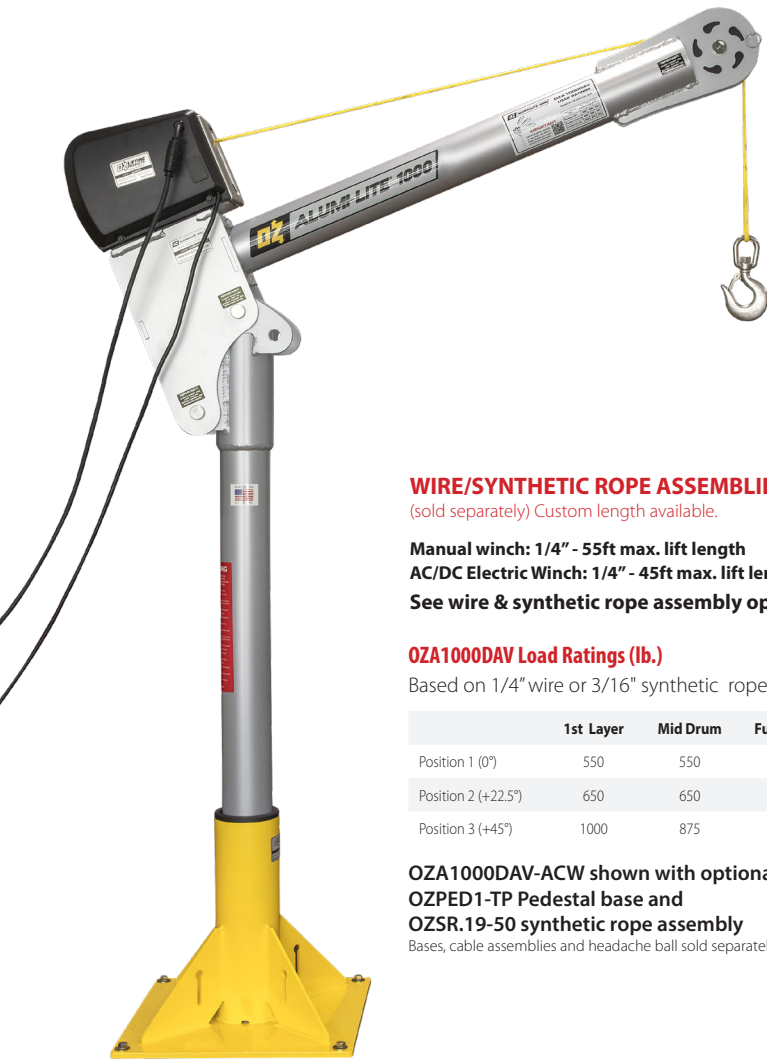
Manual winch: 1/4" - 55ft max. lift length  
AC/DC Electric Winch: 1/4" - 45ft max. lift length  
See wire & synthetic rope assembly options page 38

### OZA1000DAV Load Ratings (lb.)

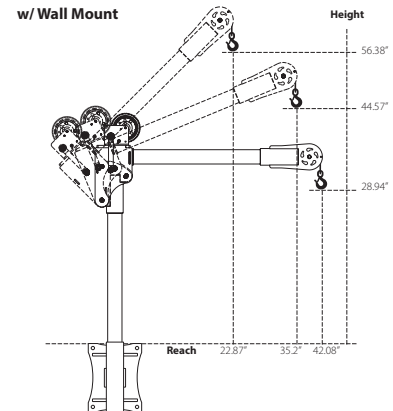
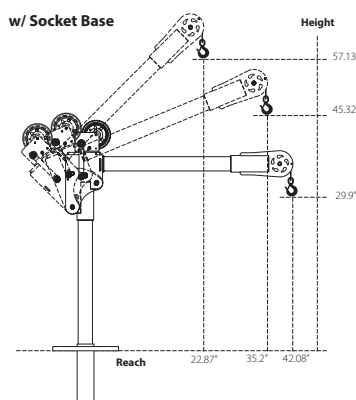
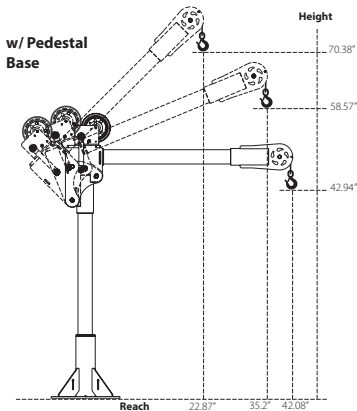
Based on 1/4" wire or 3/16" synthetic rope

	1st Layer	Mid Drum	Full Drum
Position 1 (0°)	550	550	550
Position 2 (+22.5°)	650	650	550
Position 3 (+45°)	1000	875	550

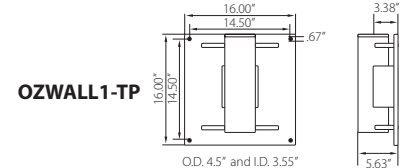
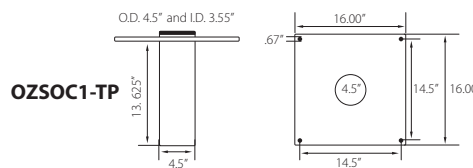
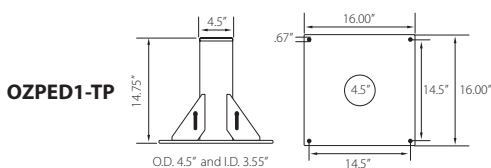
OZA1000DAV-ACW shown with optional  
OZPED1-TP Pedestal base and  
OZSR.19-50 synthetic rope assembly  
Bases, cable assemblies and headache ball sold separately



### OZA1000DAV DIMENSIONS



### OZA1000DAV BASES (sold separately) Comes with mounting template.



The listed load rating reflects the davit crane boom position as well as manual winch operation, assuming average lifting effort. Handle effort will increase as the cable is spooled onto the drum. Load rating and ease of lifting depend on the boom position, specific winch style, and the user's lifting effort. Dimensions and illustrations are for reference only and subject to change without notice.



# XR SERIES® DAVIT CRANE

Individually tested and certified at 125% W.L.L



OZXR500DAV, OZXR1000DAV



## 500 lb. and 1,000 lb. Capacity

### Features

- Maximum 62-inch reach and 87-inch hook height (both models)
- Maintains maximum weight capacity in all positions
- 360 degree rotation
- 4 different boom height adjustments
- Manual Din rated CE winch with brake. Includes power drill drive adapter
- Durable steel construction with powder coat finish
- Manual Din rated CE winch with brake (Includes power drill adapter)
- AC & DC winch options

OZXR500DAV-ACW shown with optional OZPED3 Pedestal base and OZSR.19-50 synthetic rope assembly

Bases, cable assemblies and headache ball sold separately



Handle comes standard on both the XR 500 and XR 1000

### Weight

Weight (excluding winch)	Boom	Mast	Net
OZXR500DAV (lb.)	26	26	57
OZXR1000DAV (lb.)	46	41	95

### OZXR500DAV Load Ratings (lb.)

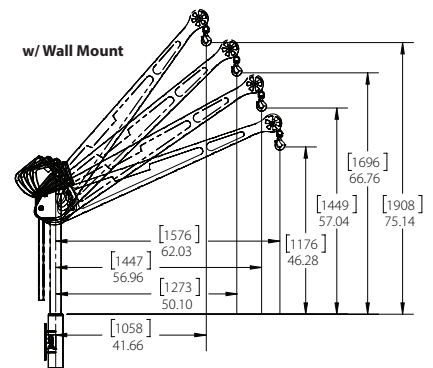
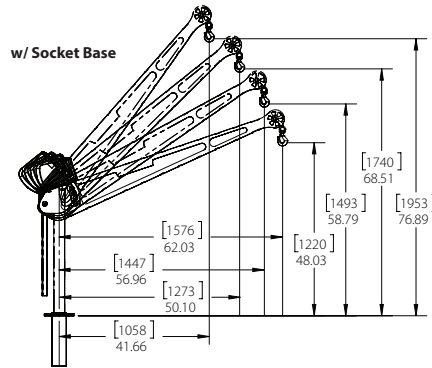
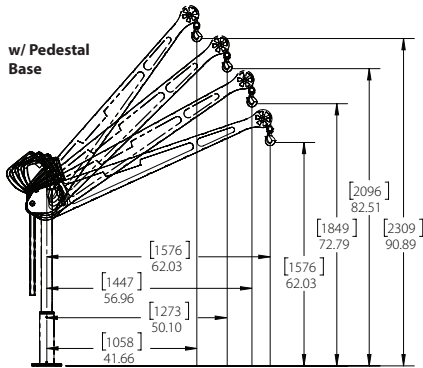
Based on 3/16" wire rope

	First Layer	Mid Drum	Full Drum
All positions	500	500	500

Manual winch: 3/16" - 80 ft max. lift length  
AC/DC Electric Winch: 3/16" - 90 ft max. lift length  
See wire & synthetic rope assembly options page 38

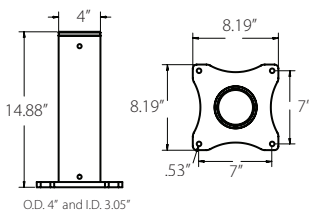
**WIRE/SYNTHETIC ROPE ASSEMBLIES**  
(sold separately) Custom length available.

### OZXR500DAV DIMENSIONS

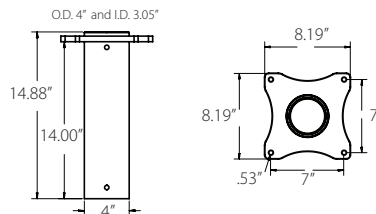


OZXR500DAV BASES (sold separately) Comes with mounting template.

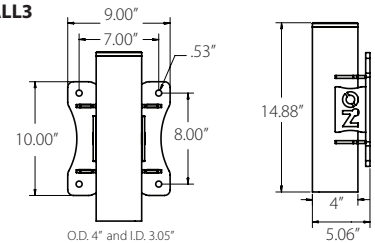
#### OZPED3



#### OZSOC3



#### OZWALL3



Davit crane maintains maximum capacity in all positions. However, the listed load rating reflects manual winch operation, assuming average lifting effort. Handle effort will increase as the cable is spooled onto the drum. Load rating and ease of lifting depend on the specific winch style and the user's lifting effort. Dimensions and illustrations are for reference only and subject to change without notice.



## Options for faster lowering and raising



OZXR1000DAV shown with optional  
OZPED1-TP Pedestal base and  
OZGAL.25-50B galvanized wire rope assembly  
and OZHB10 headache ball

Bases, cable assemblies and headache ball sold separately

### WIRE/SYNTHETIC ROPE ASSEMBLIES

(sold separately) Custom length available.

Manual winch: 1/4" - 55 ft. max. lift length

AC/DC Electric Winch: 1/4" - 45ft max. lift length

See wire & synthetic rope assembly options page 39

### OZXR1000DAV Load Ratings (lb.)

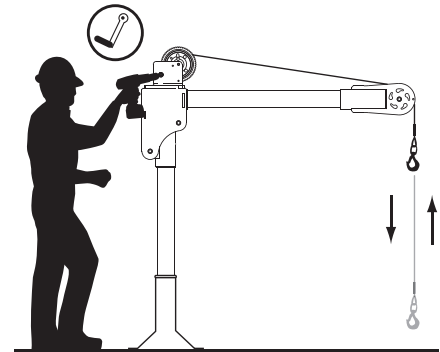
Based on 1/4" wire or 3/16" synthetic rope

All Positions	
First Layer	1000 lb.
Mid Drum	875 lb.
Full Drum	550 lb.

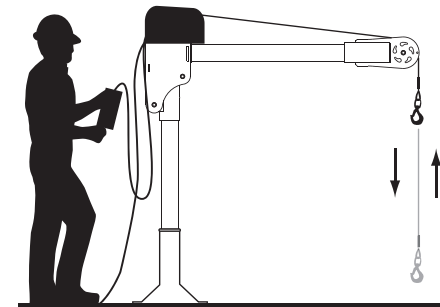
### OZXR1000DAV Load Ratings (lb.)

Based on 3/16" wire rope

All Positions	
First Layer	800 lb.
Mid Drum	800 lb.
Full Drum	550 lb.

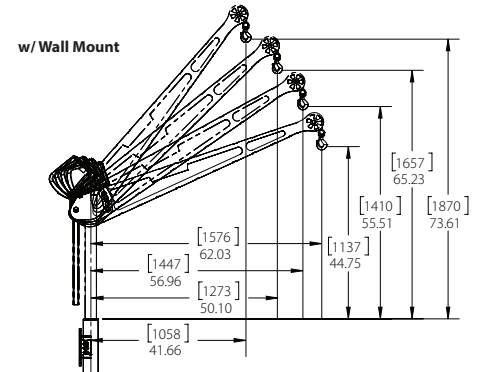
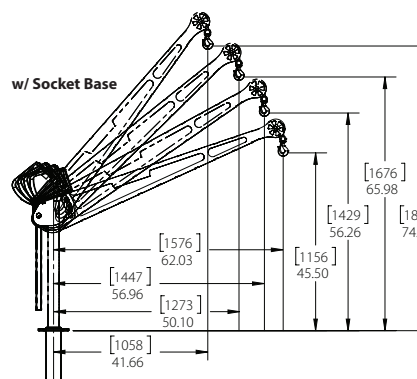
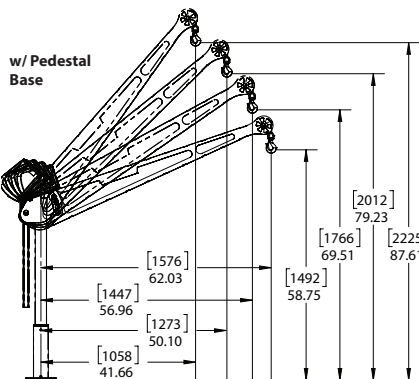


Manual winch w/drill drive adapter

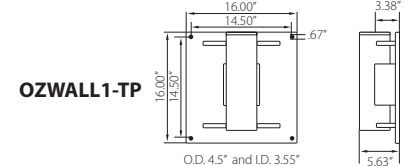
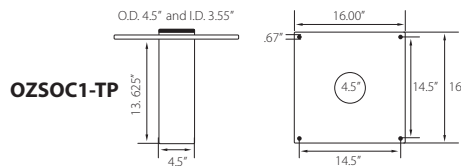
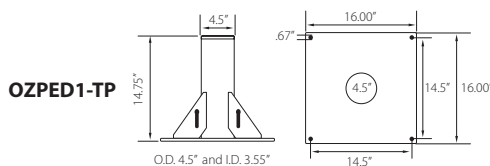


AC and DC power winches available  
See page 26

## OZXR1000DAV DIMENSIONS



## OZXR1000DAV BASES (sold separately) Comes with mounting template.



Davit crane maintains maximum capacity in all positions. However, the listed load rating reflects manual winch operation, assuming average lifting effort. Handle effort will increase as the cable is spooled onto the drum. Load rating and ease of lifting depend on the specific winch style and the user's lifting effort. Dimensions and illustrations are for reference only and subject to change without notice.



# TELE-PRO® DAVIT CRANE

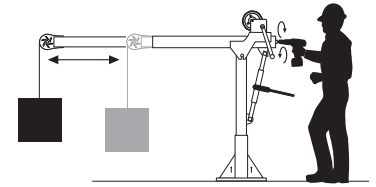
Individually tested and certified at 125% W.L.L. 

OZTP500DAV, OZTP1200DAV, OZTP2500DAV  
[PATENTED]

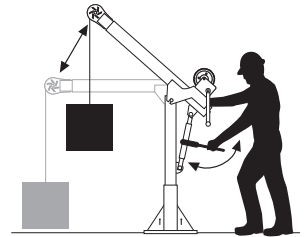


## 500 lb., 1200 lb. and 2500 lb. Capacity Features

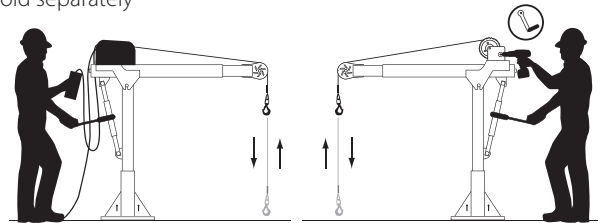
- Telescoping boom makes infinite adjustments while under load
- Smart Latch technology at boom/mast connection
- Durable, corrosion-resistant finish (OZTP500DAV & OZTP1200DAV exterior-grade powder coat/OZTP2500DAV exterior-grade powder coat boom, zinc-plated mast)
- Ratchet binder adjusts boom height under load
- Handle allows for precise control with 360-degree rotation
- No tools required for assembly and installation
- Manual DIN-rated CE winch with integrated Weston brake (Includes quick connect winch handle with drill drive adapter)
- AC & DC winch options available
- Pedestal, wall mount, socket, and wheel bases sold separately
- Individually tested and certified at 125%
- Made in USA



Telescoping boom can be adjusted using the winch handle or drill drive adapter



Ratchet binder adjusts boom under load



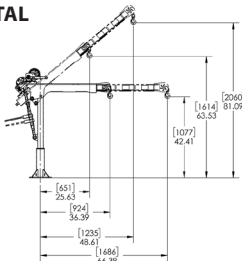
AC and DC power winches available  
See page 26

Detach winch handle for drill option

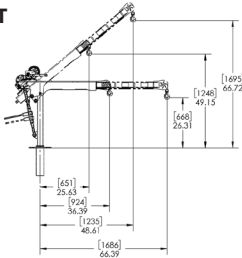
OZTP1200DAV shown with optional OZPED1-TP pedestal base and OZGAL.25-55B wire rope assembly  
Bases and cable assemblies sold separately

### OZTP500DAV DIMENSIONS Horizontal and 45° Boom Position

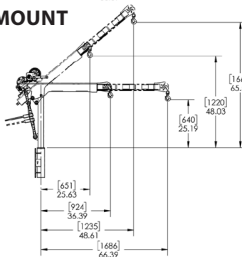
#### PEDESTAL BASE



#### SOCKET BASE

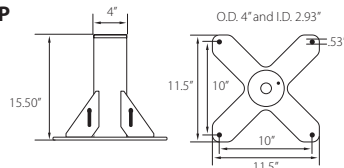


#### WALL-MOUNT BASE

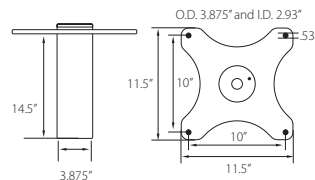


### OZTP500DAV BASES (sold separately) Comes with mounting template.

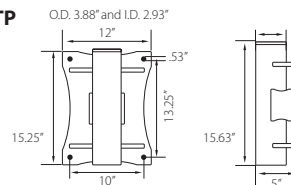
#### OZPED2-TP



#### OZSOC2-TP



#### OZWALL2-TP



### WIRE/SYNTHETIC ROPE ASSEMBLIES

(sold separately) Custom cable length available.  
All cable assemblies come with swaged ball and swivel hook with latch.

Manual winch: 3/16" - 80 ft max. lift length • 1/4" - 55ft max. lift length  
AC/DC Electric Winch: 3/16" - 90 ft max. lift length • 1/4" - 45ft max. lift length  
**See wire & synthetic rope assemblies page 40**

Weight (excluding winch)	Boom	Mast	Net
OZTP500DAV (lb.)	88	23	111
OZTP1200DAV (lb.)	102	36	138
OZTP2500DAV (lb.)	288	62	350

### OZTP500DAV LOAD RATINGS – Horizontal Boom Angle – Based on 3/16 inch wire or synthetic rope

Load Ratings (lb.)	First Layer	Mid Drum	Full Drum
Boom Position 1 at 36°	500 lb.	500 lb.	500 lb.
Boom Position 2 at 46°	430 lb.	430 lb.	430 lb.
Boom Position 3 at 56°	350 lb.	350 lb.	350 lb.
Boom Position 4 at 66°	300 lb.	300 lb.	300 lb.

### OZTP500DAV LOAD RATINGS – 45° Boom Angle – Based on 3/16 inch wire or synthetic rope

Load Ratings (lb.)	First Layer	Mid Drum	Full Drum
Boom Position 1 at 23°	500 lb.	500 lb.	500 lb.
Boom Position 2 at 30°	500 lb.	500 lb.	500 lb.
Boom Position 3 at 37°	500 lb.	500 lb.	500 lb.
Boom Position 4 at 44°	450 lb.	450 lb.	450 lb.

The listed load rating reflects the davit crane boom position as well as manual winch operation, assuming average lifting effort. Handle effort will increase as the cable is spooled onto the drum. Load rating and ease of lifting depend on the boom position, specific winch style, and the user's lifting effort. Dimensions and illustrations are for reference only and subject to change without notice.

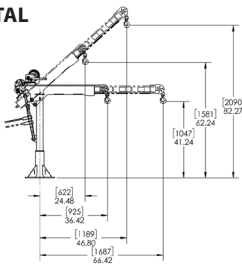


**WARNING  
CANCER AND REPRODUCTIVE HARM**  
Some products may contain chemicals known to the state of California to cause cancer, or birth defect or reproductive harm.  
[www.P65Warning.ca.gov](http://www.P65Warning.ca.gov)

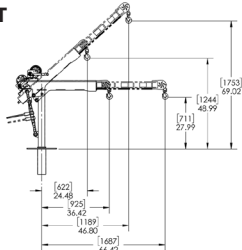


**OZTP1200DAV DIMENSIONS**  
Horizontal and 45° Boom Position

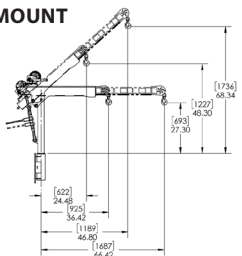
**PEDESTAL BASE**



**SOCKET BASE**

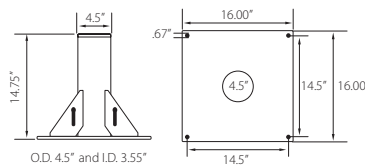


**WALL-MOUNT BASE**

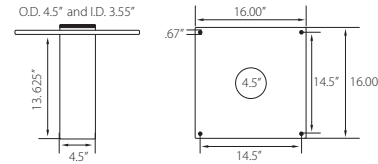


**OZTP1200DAV BASES**  
(sold separately) Comes with mounting template.

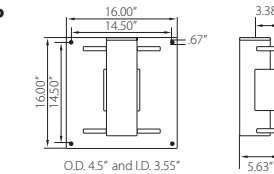
**OZPED1-TP**



**OZSOC1-TP**



**OZWALL1-TP**



**OZTP1200DAV LOAD RATINGS - Horizontal Boom Angle**  
– Based on 3/16 inch wire rope

Load Ratings (lb.)	First Layer	Mid Drum	Full Drum
Boom Position 1 at 36°	800 lb.	800 lb.	550 lb.
Boom Position 2 at 46°	800 lb.	800 lb.	550 lb.
Boom Position 3 at 56°	750 lb.	750 lb.	550 lb.
Boom Position 4 at 66°	650 lb.	650 lb.	550 lb.

**OZTP1200DAV LOAD RATINGS - 45° Boom Angle**  
– Based on 3/16 inch wire rope

Load Ratings (lb.)	First Layer	Mid Drum	Full Drum
Boom Position 1 at 23°	800 lb.	800 lb.	550 lb.
Boom Position 2 at 30.25°	800 lb.	800 lb.	550 lb.
Boom Position 3 at 37.25°	800 lb.	800 lb.	550 lb.
Boom Position 4 at 44.5°	800 lb.	800 lb.	550 lb.

**OZTP1200DAV LOAD RATINGS - Horizontal Boom Angle**  
– Based on 1/4 inch wire rope or 3/16 inch synthetic rope

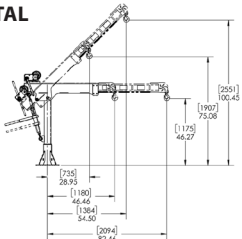
Load Ratings (lb.)	First Layer	Mid Drum	Full Drum
Boom Position 1 at 36°	1200 lb.	875 lb.	550 lb.
Boom Position 2 at 46°	900 lb.	875 lb.	550 lb.
Boom Position 3 at 56°	750 lb.	750 lb.	550 lb.
Boom Position 4 at 66°	650 lb.	650 lb.	550 lb.

**OZTP1200DAV LOAD RATINGS - 45° Boom Angle**  
– Based on 1/4 inch wire rope or 3/16 inch synthetic rope

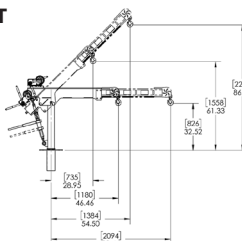
Load Ratings (lb.)	First Layer	Mid Drum	Full Drum
Boom Position 1 at 23°	1200 lb.	875 lb.	550 lb.
Boom Position 2 at 30.25°	1200 lb.	875 lb.	550 lb.
Boom Position 3 at 37.25°	1100 lb.	875 lb.	550 lb.
Boom Position 4 at 44.5°	950 lb.	875 lb.	550 lb.

**OZTP2500DAV DIMENSIONS**  
Horizontal and 45° Boom Position

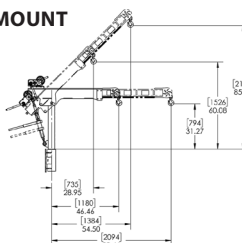
**PEDESTAL BASE**



**SOCKET BASE**

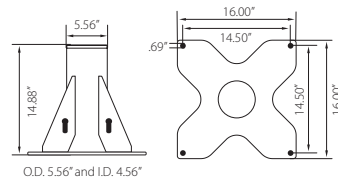


**WALL-MOUNT BASE**

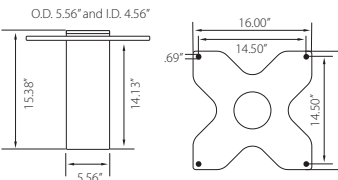


**OZTP2500DAV BASES**  
(sold separately) Comes with mounting template.

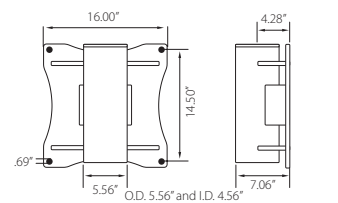
**OZPED4**



**OZSOC4**



**OZWALL4**



**OZTP2500DAV LOAD RATINGS - Horizontal Boom Angle**  
– Based on 1/4 inch synthetic rope

Load Ratings (lb.)	First Layer	Mid Drum	Full Drum
Boom Position 1 at 46°	2000 lb.	2000 lb.	1550 lb.
Boom Position 2 at 58°	1900 lb.	1900 lb.	1550 lb.
Boom Position 3 at 70°	1600 lb.	1600 lb.	1550 lb.
Boom Position 4 at 82°	1300 lb.	1300 lb.	1300 lb.

**OZTP2500DAV LOAD RATINGS - 45° Boom Angle**  
– Based on 1/4 inch synthetic rope

Load Ratings (lb.)	First Layer	Mid Drum	Full Drum
Boom Position 1 at 28°	2000 lb.	2000 lb.	1550 lb.
Boom Position 2 at 37°	2000 lb.	2000 lb.	1550 lb.
Boom Position 3 at 45.5°	2000 lb.	2000 lb.	1550 lb.
Boom Position 4 at 54°	2000 lb.	2000 lb.	1550 lb.

**OZTP2500DAV LOAD RATINGS - Horizontal Boom Angle**  
– Based on 3/8\"/>

Load Ratings (lb.)	First Layer	Mid Drum	Full Drum
Boom Position 1 at 46°	2500 lb.	2015 lb.	1550 lb.
Boom Position 2 at 58°	1900 lb.	1900 lb.	1550 lb.
Boom Position 3 at 70°	1600 lb.	1600 lb.	1550 lb.
Boom Position 4 at 82°	1300 lb.	1300 lb.	1300 lb.

**OZTP2500DAV LOAD RATINGS - 45° Boom Angle**  
– Based on 3/8\"/>

Load Ratings (lb.)	First Layer	Mid Drum	Full Drum
Boom Position 1 at 28°	2500 lb.	2015 lb.	1550 lb.
Boom Position 2 at 37°	2500 lb.	2015 lb.	1550 lb.
Boom Position 3 at 45.5°	2500 lb.	2015 lb.	1550 lb.
Boom Position 4 at 54°	2000 lb.	2000 lb.	1550 lb.

The listed load rating reflects the davit crane boom position as well as manual winch operation, assuming average lifting effort. Handle effort will increase as the cable is spooled onto the drum. Load rating and ease of lifting depend on the boom position, specific winch design, and the user's lifting effort. Dimensions and illustrations are for reference only and subject to change without notice.



# COMPOZITE® DAVIT CRANE

Individually tested and certified at 125%



OZ1200DAV (PATENTED)



Boom Weight 43 lb. (excluding winch)

Crane weighs only 83 lb. As Shown

Mast Weight 30 lb.

## 1200 lb. Capacity Features

- **Boom/Extension and Mast Made of Advanced Composite Material**
- Light weight, about 40% lighter than steel
- Corrosion resistant
- Metal components mil-spec zinc plated
- External handle helps rotate crane under load
- 4 position boom
- Ratchet screw jack adjusts boom under load giving you infinite range of lift
- 360 degree rotation of crane on sleeve bearing
- No tools required for installation. One person setup.
- DIN-Rated hand winch equipped standard with a load holding weatherproof Weston brake (Cable assembly sold separately)
- Hand winch accepts two different cable termination points: swaged ball fitting or bare end cable
- Quick connect winch handle with power drill adapter included
- Smart Latch technology at boom/mast connection
- Headache Ball (OZHB10) available and sold separately. See page 34
- Carrying case (OZRB1) available and sold separately

OZ1200DAV shown with optional OZPED1 Pedestal base, OZSS.25-55B wire rope assembly, and OZHB10 headache ball

Bases, cable assemblies and headache ball sold separately

### WIRE/SYNTHETIC ROPE ASSEMBLIES

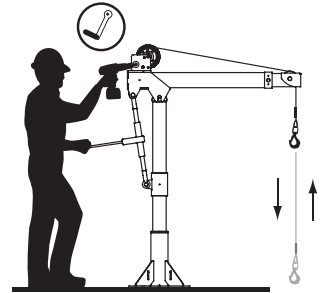
(sold separately) Custom length available.

See wire/synthetic rope assembly options page 39

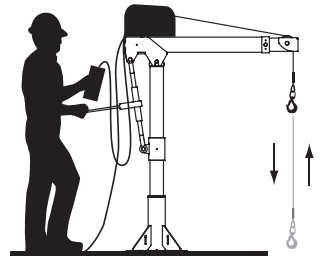
Manual winch: 3/16" - 80 ft max. lift length • 1/4" - 55ft max. lift length

AC/DC Electric Winch: 3/16" - 90 ft max. lift length • 1/4" - 45ft max. lift length

## Options for faster lowering and raising



Detach winch handle for drill option



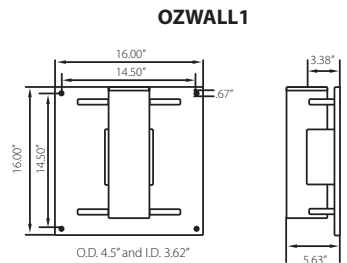
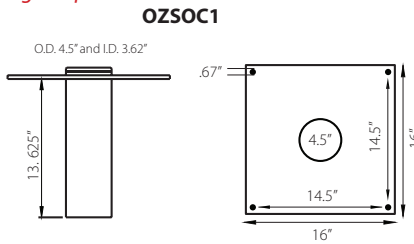
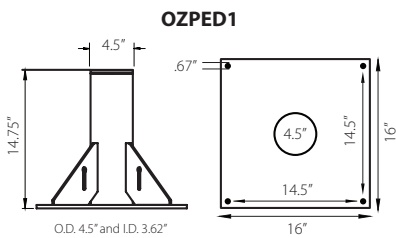
AC and DC power winches available See page 26

**One person set up. No tools required for installation. Lightweight & Portable.**

## Weight

Weight (excluding winch)	Boom	Mast	Net
OZ1200DAV (lb.)	43	30	73

### OZ1200DAV BASES (sold separately) Comes with mounting template.



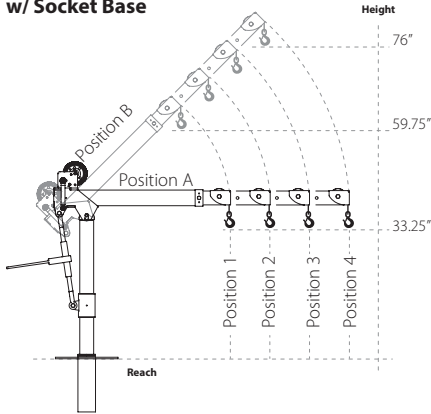
The listed load rating reflects the davit crane boom position as well as manual winch operation, assuming average lifting effort. Handle effort will increase as the cable is spooled onto the drum. Load rating and ease of lifting depend on the boom position, specific winch style, and the user's lifting effort. Dimensions and illustrations are for reference only and subject to change without notice.



**OZ1200DAV DIMENSIONS** Dimensions are for reference only and subject to change without notice.



**w/ Socket Base**



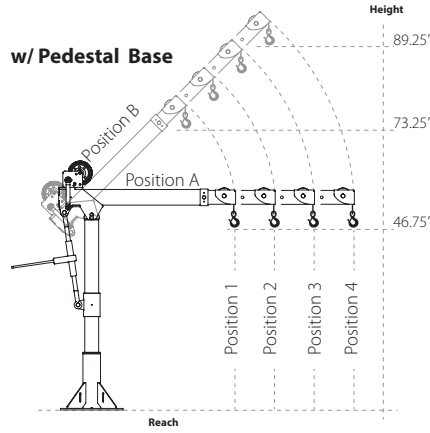
**Boom Horizontal Position (A)**

- Boom Position 1: Reach 36"
- Boom Position 2: Reach 46"
- Boom Position 3: Reach 56"
- Boom Position 4: Reach 66"

**Boom 45° Position (B)**

- Boom Position 1: Reach 22"
- Boom Position 2: Reach 29"
- Boom Position 3: Reach 36"
- Boom Position 4: Reach 43"

**w/ Pedestal Base**



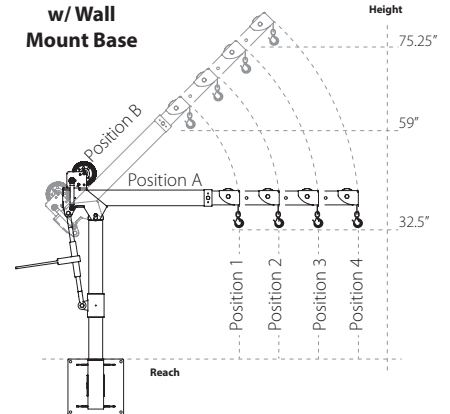
**Boom Horizontal Position (A)**

- Boom Position 1: Reach 36"
- Boom Position 2: Reach 46"
- Boom Position 3: Reach 56"
- Boom Position 4: Reach 66"

**Boom 45° Position (B)**

- Boom Position 1: Reach 22"
- Boom Position 2: Reach 29"
- Boom Position 3: Reach 36"
- Boom Position 4: Reach 43"

**w/ Wall Mount Base**

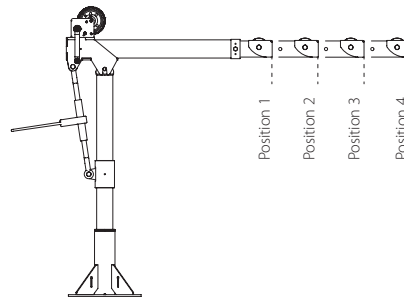


**Boom Horizontal Position (A)**

- Boom Position 1: Reach 36"
- Boom Position 2: Reach 46"
- Boom Position 3: Reach 56"
- Boom Position 4: Reach 66"

**Boom 45° Position (B)**

- Boom Position 1: Reach 22"
- Boom Position 2: Reach 29"
- Boom Position 3: Reach 36"
- Boom Position 4: Reach 43"



**Load Ratings OZ1200DAV**

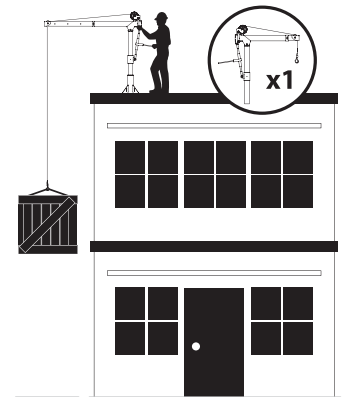
\*Table based on 1/4 inch wire rope or 3/16" Synthetic Rope

Load Ratings	First Layer	Mid Drum	Full Drum
Position 1 (lb.)	1200	875	550
Position 2 (lb.)	900	875	550
Position 3 (lb.)	700	700	550
Position 4 (lb.)	400	400	400

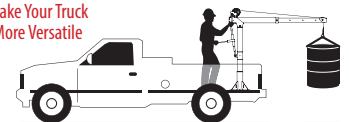
\*Table based on 3/16" wire rope

Load Ratings	First Layer	Mid Drum	Full Drum
Position 1 (lb.)	800	800	550
Position 2 (lb.)	800	800	550
Position 3 (lb.)	700	700	550
Position 4 (lb.)	400	400	400

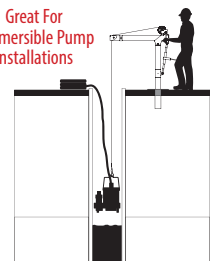
**Designed for use in multiple workstations. Buy one crane and multiple bases.**



Make Your Truck More Versatile



Great For Submersible Pump Installations



The listed load rating reflects the davit crane boom position as well as manual winch operation, assuming average lifting effort. Handle effort will increase as the cable is spooled onto the drum. Load rating and ease of lifting depend on the boom position, specific winch style, and the user's lifting effort. Dimensions and illustrations are for reference only and subject to change without notice.

# STEEL DAVIT CRANE

Individually tested and certified at 125% W.L.L



OZ500DAV, OZ1000DAV, OZ2500DAV



**500 lb., 1000 lb. and 2500 lb. Capacity**

## Features

- 500 lb, 1000 lb, and 2500 lb capacities
- All steel construction
- Durable, corrosion-resistant finish (OZ500DAV & OZ1000DAV exterior-grade powder coat/OZ2500DAV zinc-plated)
- 4 boom height adjustments
- No tools required for assembly and installation
- Manual carbon steel winch with integrated Weston brake (Includes removable winch handle with drill drive adapter)
- AC & DC winch options available
- Pedestal, wall mount, socket, and wheel bases sold separately
- Individually tested and certified at 125%
- Made in USA

### OZ500DAV & OZ1000DAV

Manual winch: 3/16" - 80 ft max. lift length • 1/4" - 55ft max. lift length

AC/DC Electric Winch: 3/16" - 90 ft max. lift length • 1/4" - 45ft max. lift length

### OZ2500DAV

Manual winch: 1/4" Synthetic - 75 ft max. lift length • 5/16" Synthetic - 55ft

max. lift length • 3/8" Synthetic - 45ft max. lift length

### WIRE/SYNTHETIC ROPE ASSEMBLIES

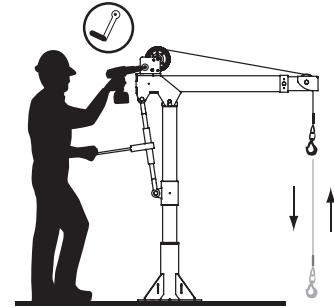
(sold separately) Custom length available.

See wire/synthetic rope assembly options page 39

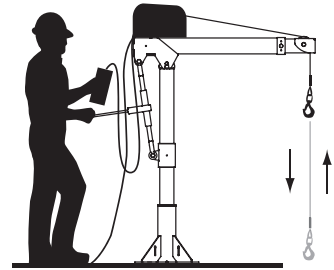
OZ1000DAV shown with optional OZPED2 pedestal base and OZGAL.25-55B wire rope assembly

Bases and cable assemblies sold separately

## Options for faster lowering and raising



Detach winch handle for drill option



AC and DC power winches available  
See page 26

## Weight

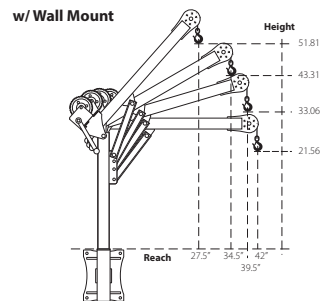
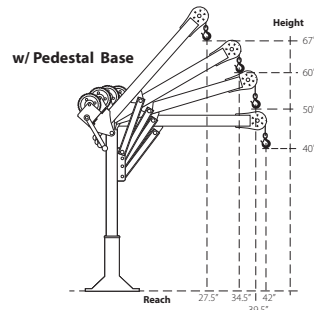
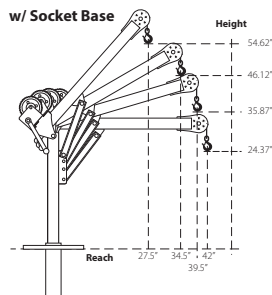
Weight (excluding winch)	Boom	Mast	Net
OZ500DAV (lb.)	27	23	50
OZ1000DAV (lb.)	35	29	64
OZ2500DAV (lb.)	130	64	194

## Load Ratings

\*OZ500DAV based on 3/16" or 5/16" wire & synthetic rope

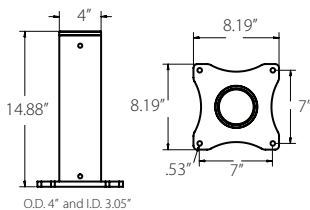
All Positions	
First Layer	500 lb.
Mid Drum	500 lb.
Full Drum	500 lb.

## OZ500DAV DIMENSIONS

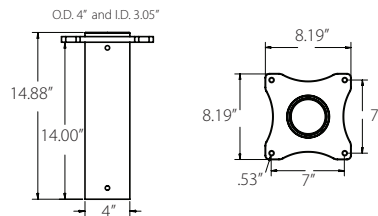


OZ500DAV BASES (sold separately) Comes with mounting template.

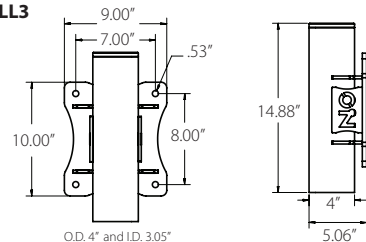
### OZPED3



### OZSOC3



### OZWALL3



Davit crane maintains maximum capacity in all positions. However, the listed load rating reflects manual winch operation, assuming average lifting effort. Handle effort will increase as the cable is spooled onto the drum. Load rating and ease of lifting depend on the specific winch style and the user's lifting effort. Dimensions and illustrations are for reference only and subject to change without notice.

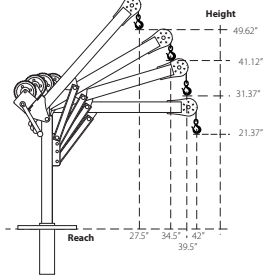


**WARNING**  
CANCER AND REPRODUCTIVE HARM  
Some products may contain chemicals known to the state of California to cause cancer, or birth defect or reproductive harm.  
www.P65Warning.ca.gov

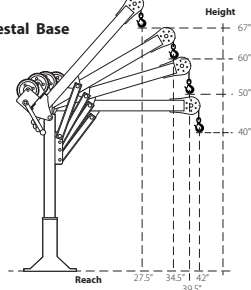


### OZ1000DAV DIMENSIONS

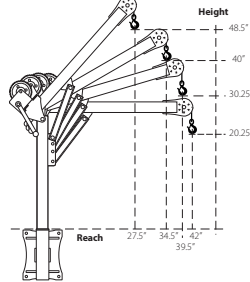
w/ Socket Base



w/ Pedestal Base



w/ Wall Mount



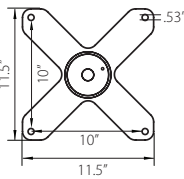
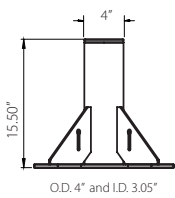
### Load Ratings

\*OZ1000DAV based on 1/4" wire & 3/16" synthetic rope

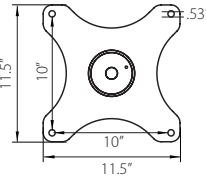
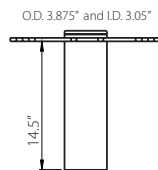
All Positions	
First Layer	1000 lb.
Mid Drum	875 lb.
Full Drum	550 lb.

OZ1000DAV BASES (sold separately) \*Base inside diameter 3.0" • Comes with mounting template.

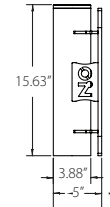
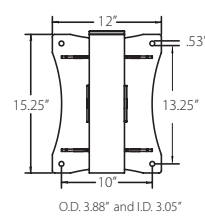
OZPED2



OZSOC2

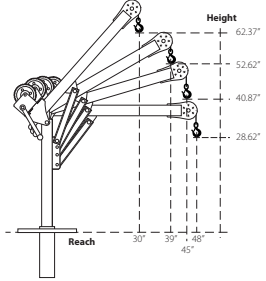


OZWALL2

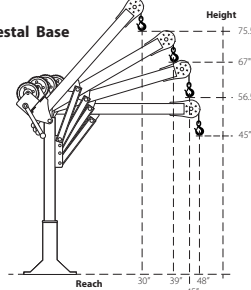


### OZ2500DAV DIMENSIONS

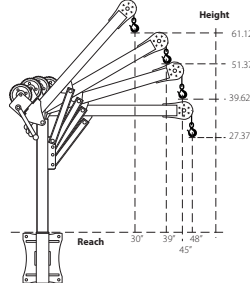
w/ Socket Base



w/ Pedestal Base



w/ Wall Mount



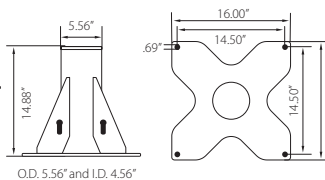
### Load Ratings

\*OZ2500DAV based on 3/8" synthetic rope

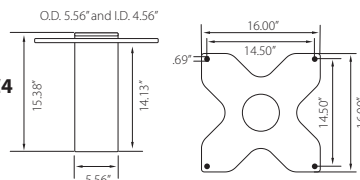
All Positions	
First Layer	2500 lb.
Mid Drum	2000 lb.
Full Drum	1550 lb.

OZ2500DAV BASES (sold separately) \*Base inside diameter 4.5" • Comes with mounting template.

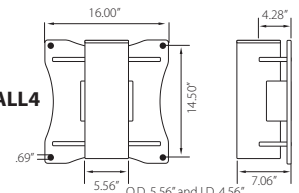
OZPED4



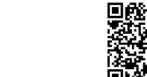
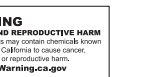
OZSOC4



OZWALL4



Davit crane maintains maximum capacity in all positions. However, the listed load rating reflects manual winch operation, assuming average lifting effort. Handle effort will increase as the cable is spooled onto the drum. Load rating and ease of lifting depend on the specific winch style and the user's lifting effort. Dimensions and illustrations are for reference only and subject to change without notice.



# COMPOZITE ELITE® DAVIT CRANE

Individually tested and certified at 125% W.L.L



OZCF1200DAV



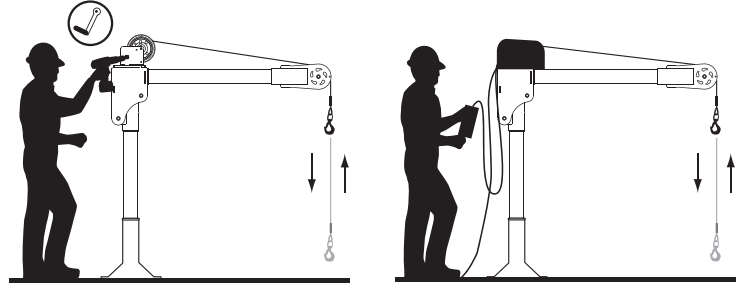
Ultra lightweight & portable

1200 lb. Capacity

## Features

- Carbon fiber and high-strength aluminum construction
- Corrosion-resistant finish
- Truly portable design
- 3 boom height adjustments
- One-person assembly, no tools required for installation
- 360-degree rotation
- Manual DIN-rated CE winch with integrated Weston brake (Includes quick connect winch handle with drill drive adapter)
- AC & DC winch options available
- Pedestal, wall mount, socket, and wheel bases sold separately
- Individually tested and certified at 125%
- Made in USA

## Options for faster lowering and raising



Manual winch w/drill drive adapter

AC and DC power winches available  
See page 26

## Weight

Weight (excluding winch)	Boom	Mast	Net
OZFC1200DAV (lb.)	18	13	31

## Load Ratings (lb.)

Based on 1/4" wire or 3/16 synthetic rope

	First Layer	Mid Drum	Full Drum
Position 1 (0°)	500	500	500
Position 2 (+22.5°)	700	700	550
Position 3 (+45°)	1200	875	550

OZCF1200DAV shown with optional OZPED2 pedestal base, OZHB10 headacheball and OZGAL.25-55B wire rope assembly  
Bases and cable assemblies sold separately

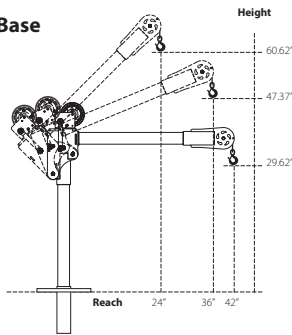
## WIRE/SYNTHETIC ROPE ASSEMBLIES

(sold separately) Custom length available.  
See wire/synthetic rope assembly options page 38

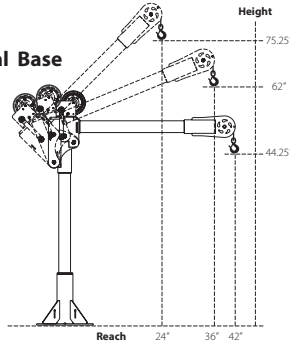
Manual winch: 3/16" - 80 ft max. lift length • 1/4" - 55ft max. lift length  
AC/DC Electric Winch: 3/16" - 90 ft max. lift length • 1/4" - 45ft max. lift length  
See wire & synthetic rope assembly options page 38

## OZCF1200DAV DIMENSIONS

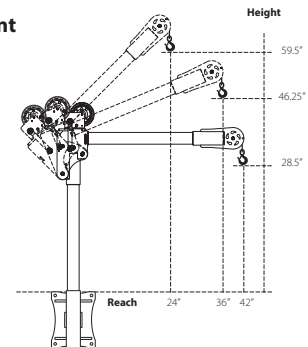
### w/ Socket Base



### w/ Pedestal Base

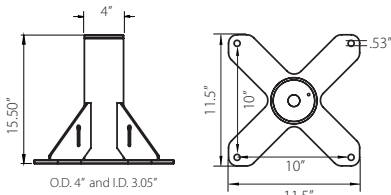


### w/ Wall Mount

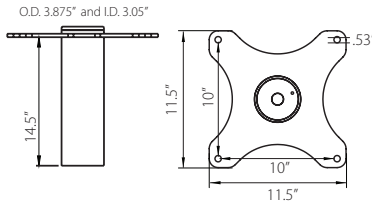


## OZCF1200DAV BASES (sold separately) Comes with mounting template.

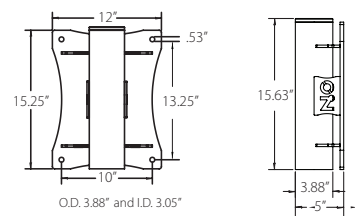
### OZPED2



### OZSOC2



### OZWALL2



Davit crane maintains maximum capacity in all positions. However, the listed load rating reflects manual winch operation, assuming average lifting effort. Handle effort will increase as the cable is spooled onto the drum. Load rating and ease of lifting depend on the specific winch style and the user's lifting effort. Dimensions and illustrations are for reference only and subject to change without notice.



**WARNING**  
CANCER AND REPRODUCTIVE HARM  
Some products may contain chemicals known to the state of California to cause cancer, or birth defect or reproductive harm.  
www.P65Warning.ca.gov



# STAINLESS DAVIT CRANE

Individually tested and certified at 125% W.L.L

OZSS850DAV, OZSS1500DAV



## 850 lb. and 1500 lb. Capacity

### Features

- 304 stainless steel construction
- RoHS-compliant, electropolished finish
- Food-grade grease meets NSF H1 standards, suitable for food processing
- 4 boom height adjustments
- 360-degree rotation
- Quick connect pins – no tools required for assembly and installation
- Manual DIN-rated stainless steel brake winch with integrated Weston brake
- AC & DC winch options available
- Mast extension, pedestal, wall mount, socket, and wheel bases sold separately
- 2.5:1 safety factor, individually tested and certified at 125%
- Stainless steel ID tag



Manual winch: 3/16" - 130 ft max. lift length • 1/4" - 75 ft max. lift length

AC/DC Electric Winch: 3/16" - 90 ft max. lift length • 1/4" - 45ft max. lift length

### WIRE/SYNTHETIC ROPE ASSEMBLIES

(sold separately) Custom length available.

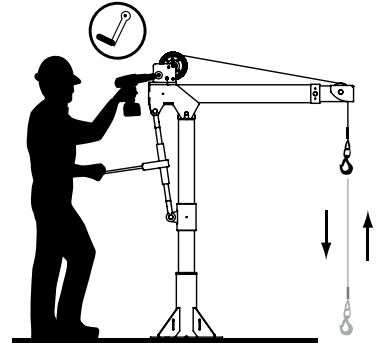
See wire/synthetic rope assembly options page 39

OZSS1500DAV shown with optional OZPED1-SS pedestal base and OZSS.25-55B wire rope assembly

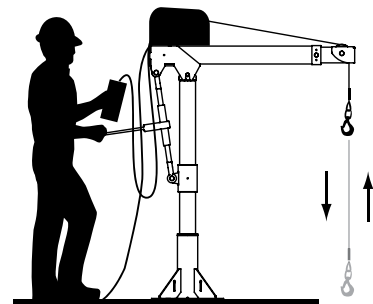
Bases and cable assemblies sold separately

Weight (excluding winch)	Boom	Mast	Net
OZSS850DAV (lb.)	35	29	64
OZSS1500DAV (lb.)	49	50	99

## Options for faster lowering and raising



Detach winch handle for drill option



AC and DC power winches available See page 26

### OZSS850DAV LOAD RATINGS

Based on 3/16 inch stainless steel wire or synthetic rope.

Load Ratings	
Boom Position 1 at 0°	500 lb.
Boom Position 2 at 15°	600 lb.
Boom Position 3 at 30°	700 lb.
Boom Position 4 at 45°	850 lb.

### OZSS1500DAV LOAD RATINGS

Based on 1/4 inch stainless steel wire or 3/16 inch synthetic rope.

Load Ratings	First Layer	Mid Drum	Full Drum
Boom Position 1 at 0°	1000 lb.	1000 lb.	850 lb.
Boom Position 2 at 15°	1200 lb.	1200 lb.	850 lb.
Boom Position 3 at 30°	1300 lb.	1250 lb.	850 lb.
Boom Position 4 at 45°	1500 lb.	1250 lb.	850 lb.

## Engineered for Sanitary & High-Corrosion Applications

### WATER TREATMENT



### WASTEWATER



### AEROSPACE



### FOOD PROCESSING



### PHARMACEUTICAL



Davit crane maintains maximum capacity in all positions. However, the listed load rating reflects manual winch operation, assuming average lifting effort. Handle effort will increase as the cable is spooled onto the drum. Load rating and ease of lifting depend on the specific winch style and the user's lifting effort. Dimensions and illustrations are for reference only and subject to change without notice.

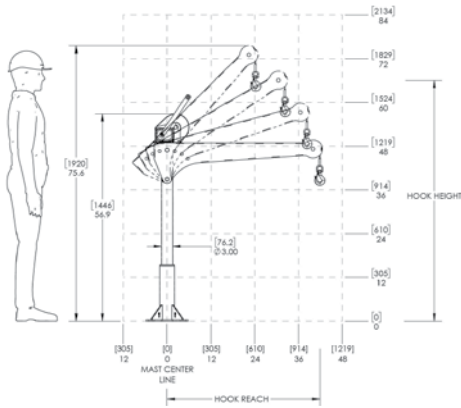


**WARNING**  
**CANCER AND REPRODUCTIVE HARM**  
 Some products may contain chemicals known to the state of California to cause cancer, or birth defect or reproductive harm.  
[www.PCSWarning.ca.gov](http://www.PCSWarning.ca.gov)

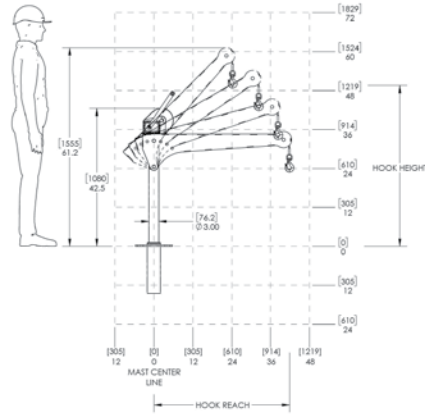


### OZSS850DAV DIMENSIONS

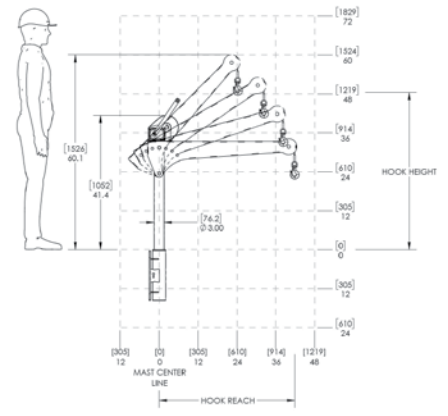
w/ Pedestal Base



w/ Socket Base

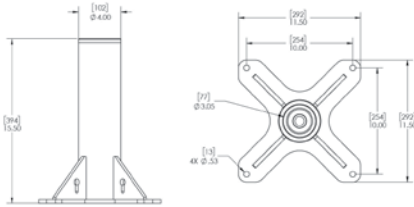


w/ Wall Mount

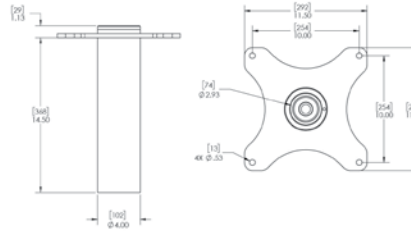


**OZSS850DAV BASES** (sold separately) Comes with mounting template.

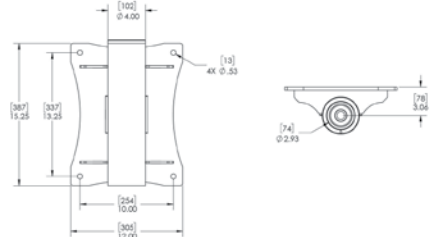
**OZPED2-TPSS**



**OZSOC2-TPSS**

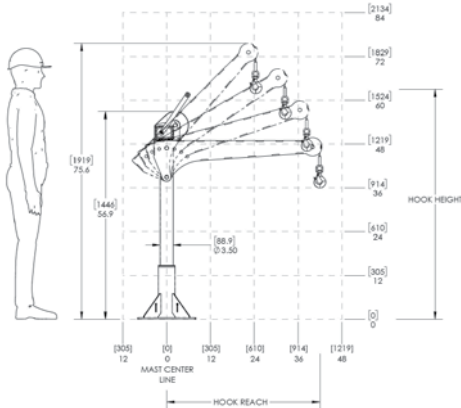


**OZWALL2-TPSS**

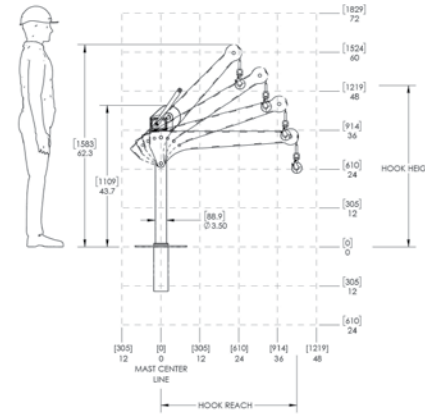


### OZSS1500DAV DIMENSIONS

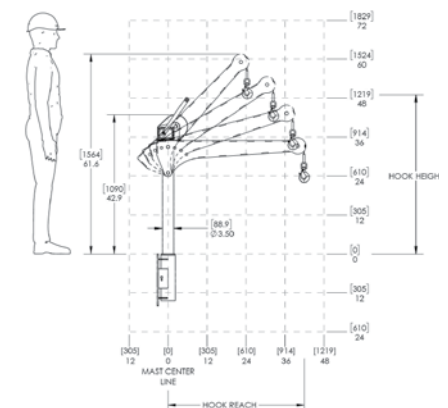
w/ Pedestal Base



w/ Socket Base

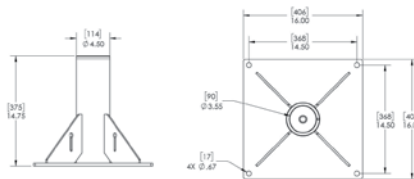


w/ Wall Mount

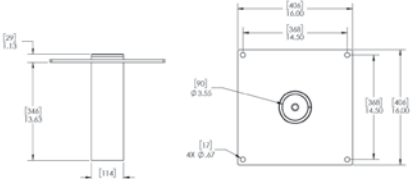


**OZSS1500DAV BASES** (sold separately) Comes with mounting template.

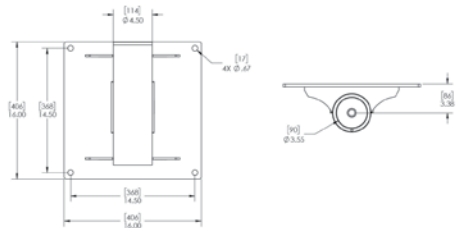
**OZPED1-TPSS**



**OZSOC1-TPSS**



**OZWALL1-TPSS**



Davit crane maintains maximum capacity in all positions. However, the listed load rating reflects manual winch operation, assuming average lifting effort. Handle effort will increase as the cable is spooled onto the drum. Load rating and ease of lifting depend on the specific winch style and the user's lifting effort. Dimensions and illustrations are for reference only and subject to change without notice.

**WARNING**  
**CANCER AND REPRODUCTIVE HARM**  
 Some products may contain chemicals known to the state of California to cause cancer or birth defect or reproductive harm.  
[www.P65Warning.ca.gov](http://www.P65Warning.ca.gov)

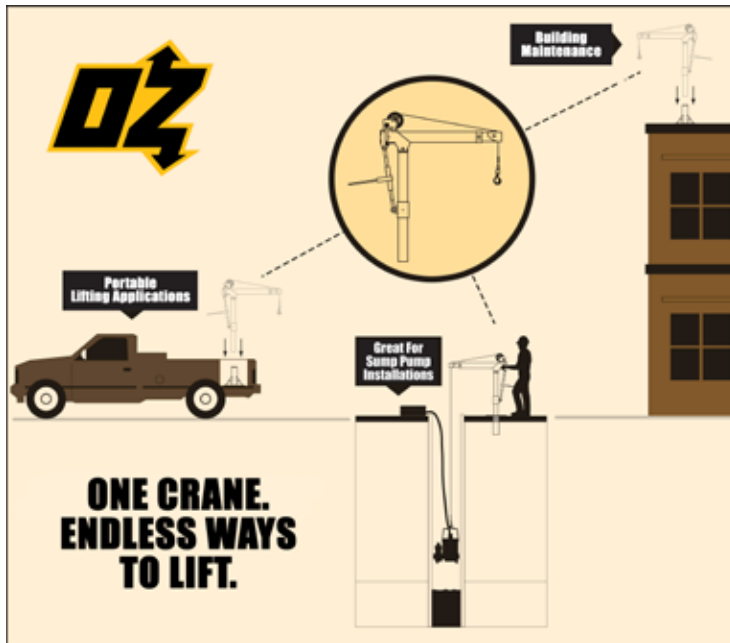
# DAVIT CRANE BASES

**One crane.  
Multiple mounting points.  
Endless ways to lift.**

Portable davit crane systems engineered for fast deployment across multiple lifting locations. OZ's interchangeable bases allow one davit crane to move between compatible mounting points with quick, tool-free installation.

## HOW THE SYSTEM WORKS

1. Install compatible bases where lifting is needed
2. Move one davit crane between locations
3. Insert mast and begin lifting — no tools required



Configure lifting points across facilities, rooftops, trucks, utility access areas, and confined spaces while using a single portable davit crane.

## Features

- One portable davit crane works across multiple compatible bases
- Tool-free mast insertion for fast setup and relocation
- Industrial-strength steel construction
- Available in durable powder coat or electropolished 304 stainless steel
- Includes mounting template for simplified installation
- Multiple mounting styles for rooftop, vehicle, plant, utility, and confined space applications

*\*Davit crane sold separately*

## Additional Base Add-Ons

**MAST EXTENTIONS (add 24 inches of height)**  
OZEXT1-COMP, OZEXT1-TP, OZEXT2, OZEXT2-TP,  
OZEXT1-TPSS, OZEXT2-SS

Available in yellow powder coat or 304 stainless steel

**BACK PLATE (added stability for pedestal or wall bases)**

OZBACK1, OZBACK2, OZBACK1-SS, OZBACK2-SS

Available in steel or 304 stainless steel



### PEDESTAL BASES

OZPED1, OZPED1-TP,  
OZPED2, OZPED2-TP, OZPED3,  
OZPED1-SS, OZPED1-TPSS,  
OZPED2-SS, OZPED2-TPSS

Surface-mounted bases designed for installation on concrete pads, floors, truck beds, and structural platforms.



### SOCKET BASES

OZSOC1, OZSOC1-TP,  
OZSOC2, OZSOC2-TP, OZSOC3,  
OZSOC1-SS, OZSOC1-TPSS,  
OZSOC2-SS, OZSOC2-TPSS

Flush-mounted bases may be core drilled or cast into concrete for low-profile access.



### WALL BASES

OZWALL1, OZWALL1-TP,  
OZWALL2, OZWALL2-TP,  
OZWALL3, OZWALL1-SS,  
OZWALL1-TPSS, OZWALL2-SS,  
OZWALL2-TPSS

Vertical mounting bases engineered for walls and parapets where floor space is limited.

### 1 SERIES BASE COMPATIBILITY:

CompOZite® 1200 (OZ1200DAV)

### 1-TP SERIES BASE COMPATIBILITY

Alumi-Lite® 1000 (OZA1000DAV)

XR Series 1000 (OZXR1000DAV)

Tele-Pro® 1200 (OZTP1200DAV)

Stainless 1500 (OZSS1500DAV)

### 2 SERIES BASE COMPATIBILITY:

Steel 1000 (OZ1000DAV)

CompOZite® Elite 1200 (OZCF1200DAV)

### 2-TP SERIES BASE COMPATIBILITY:

Tele-Pro® 500 (OZTP500DAV)

Stainless 850 (OZSS850DAV)

### 3 SERIES BASE COMPATIBILITY:

Steel 500 (OZ500DAV)

Alumi-Lite® 500 (OZA500DAV)

XR Series 500 (OZXR500DAV)

### 4 SERIES BASE COMPATIBILITY:

Steel 2500 (OZ2500DAV)

Tele-Pro® 2500 (OZTP2500DAV)



**NOW  
AVAILABLE  
IN 304  
STAINLESS  
STEEL!**



Diagram dimensional values are provided in inches. Bracketed values [ ] within diagram represent equivalent measurements in millimeters for informational purposes only. Dimensions and illustrations are for reference only and subject to change without notice.



# WHEEL BASE

For all OZ Lifting Products davit cranes up to 1200 lb. capacity



**OZWB3** shown with **OZXR500**  
**OZGAL.19-80B** galvanized cable assembly  
**OZHB10** 10lb. headache ball  
Davit crane, headache ball, and cable assemblies sold separately.  
Locking collar included with applicable wheel base kits.

## Features

- Industrial strength steel construction with a durable powder-coat finish
- Floor-anchoring system allows the davit to rotate while under load (when base is not anchored the davit must remain in a forward position when lifting)
- Durable polyurethane-tread indoor/outdoor wheels with rear swivel casters, ensuring smooth mobility and adaptability to various workspaces. Rear casters feature a lock brake for enhanced safety and stability when needed.
- Forklift pockets (for transporting only)

## Includes

**Floor-Anchor Mounting Bolt Kit:** Enhance the stability and safety of your OZ Wheel Base with optional floor-anchoring bolts, ensuring secure attachment to the ground for added peace of mind during operation. Includes four (4) 12" zinc-plated hex head bolts and washers. *Concrete anchor not included.*

**Davit Crane Locking Collar:** This component effectively prevents the crane boom from rotating excessively, eliminating the risk of tipping hazards and ensuring a secure lifting environment. *Included with models OZWB1, OZWB1-TP, OZWB2, OZWB2-TP, and OZWB3.*

**Toolbox Storage Tube:** Keep your tools and Wheel Base accessories organized with this durable and versatile toolbox storage tube, molded from high-density polypropylene and featuring a secure screw-cap and latch closure for secure storage. Zip ties are included for convenient, versatile mounting.

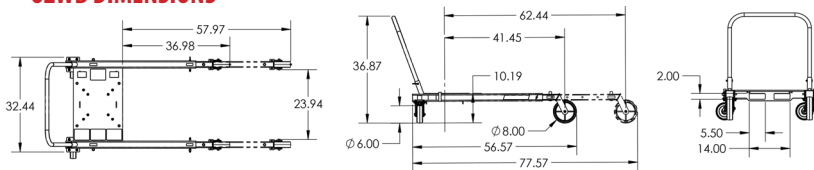
*\*Davit crane sold separately*

- OZWB** Wheel Base for OZ Lifting Products davit cranes up to 1200 lb. capacity (pedestal base and locking collar not included)
- OZWB1** Wheel Base for use with OZ1200DAV davit crane (pedestal base and locking collar included)
- OZWB1-TP** Wheel Base for use with OZTP1200DAV, OZA1000DAV, OZXR1000DAV davit cranes (pedestal base and locking collar included)
- OZWB2** Wheel Base for use with OZ1000DAV and OZCF1200DAV davit cranes (pedestal base and locking collar included)
- OZWB2-TP** Wheel Base for use with OZTP500DAV davit crane (pedestal base and locking collar included)
- OZWB3** Wheel Base for use with OZ500DAV, OZA500DAV and OZXR500DAV davit cranes (pedestal base and locking collar included)

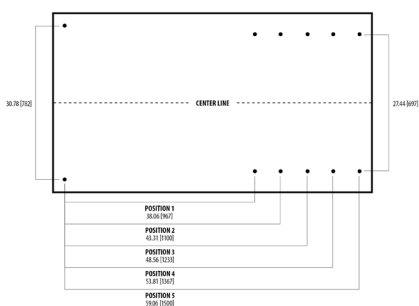
## Floor-Anchoring System with Locking Collar



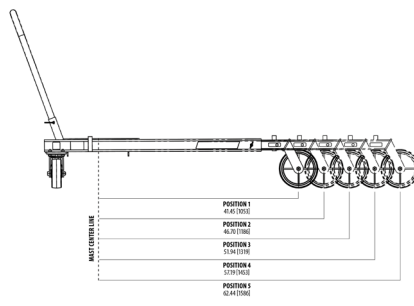
## OZWB DIMENSIONS



## ADJUSTABLE LEG EXTENSIONS



## FLOOR-ANCHORING SYSTEM



## OZWB DAVIT CRANE REACH DIAMETER

Sections are representative of hook reach in 360-degrees

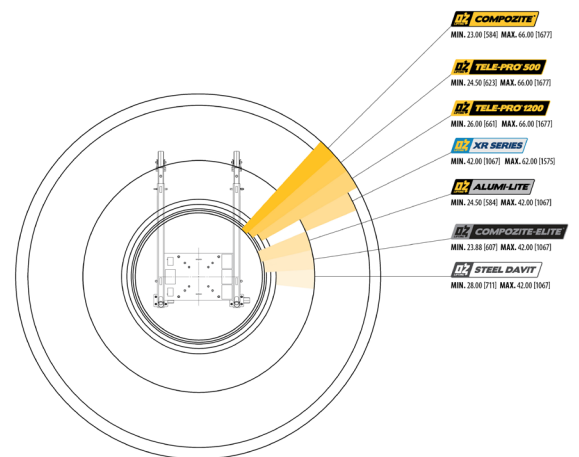


Diagram dimensional values are provided in inches. Bracketed values [ ] within diagram represent equivalent measurements in millimeters for informational purposes only. Dimensions and illustrations are for reference only and subject to change without notice.





# APPLICATION DATA SHEET | DAVIT CRANES

Company Name: \_\_\_\_\_ Contact Name: \_\_\_\_\_

Email Address: \_\_\_\_\_ Phone: \_\_\_\_\_

Address: \_\_\_\_\_ City: \_\_\_\_\_ State: \_\_\_\_\_ Zip Code: \_\_\_\_\_

Job Description: \_\_\_\_\_

Weight of Load: \_\_\_\_\_

Length of Lift: \_\_\_\_\_

Davit Arm Reach: \_\_\_\_\_

What Capacity Do You Need and at What Reach?  
\_\_\_\_\_

Height Requirement:  
\_\_\_\_\_

Winch:

- Hand
- 115V AC
- 12V DC

Rope Material:

- Galvanized
- Stainless Steel
- Synthetic

Base Requirements:

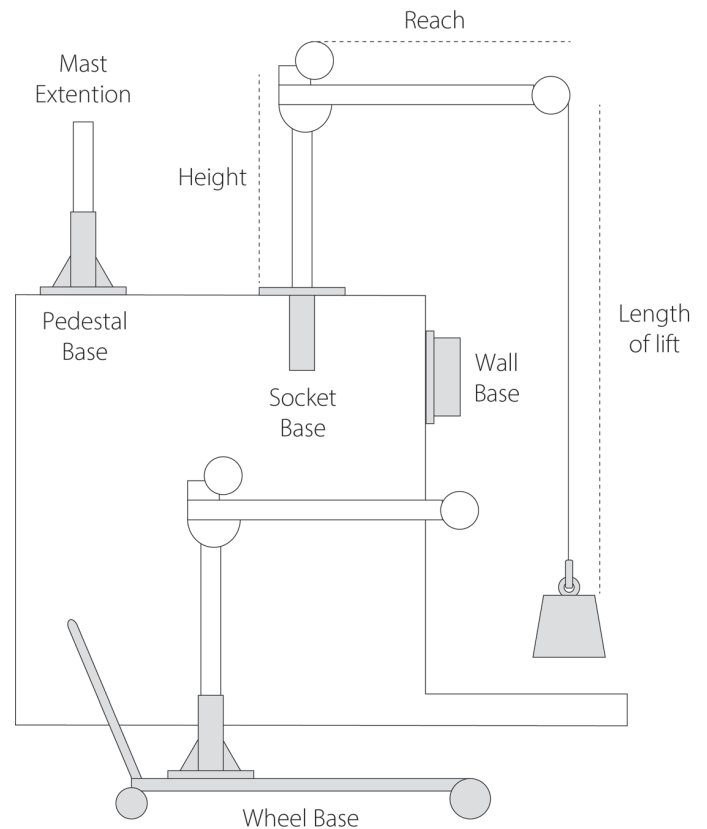
- Pedestal
- Socket
- Wall Mount
- Wheel

Optional Accessories:

- Mast Extension
- Headache Ball
- Weatherproof Winch Cover
- Weatherproof Davit Cover
- Locking Collar
- Wire Rope Holder
- Davit Crane Roller Bag

What Is The Application/Environment?  
\_\_\_\_\_

How Did You Hear About Us? \_\_\_\_\_



*Purchaser is responsible for proper base installation. Approval from a civil or structural engineer is recommended for base installation.*

*OZ Lifting Products davit cranes are thoroughly inspected and tested using a predetermined load. Test certificate included. Base, wire/synthetic rope assembly, and accessories sold separately.*

*Load rating of davit cranes may vary depending on position of boom, wire/synthetic rope length, and winch being used.*

*OZ Lifting Products equipment is not for lifting people or lifting objects over people.*

*If you have any questions about this form, need assistance selecting the right davit crane for your needs, or require a more in-depth consultation, our lifting experts are happy to help! Contact us today to schedule a personalized consultation with a davit crane specialist.*



**FILL OUT THIS FORM ONLINE**

# WIRE/SYNTHETIC ROPE ASSEMBLIES

## Steel Wire Rope (For manual winch)

OZGAL.19-80B	3/16" x 80'	Galvanized cable assembly
OZSS.19-80B	3/16" x 80'	Stainless steel cable assembly
OZGAL.25-55B	1/4" x 55'	Galvanized cable assembly
OZSS.25-55B	1/4" x 55'	Stainless steel cable assembly

Above cable assemblies come with swaged ball and swivel hook with latch.

**Custom cable length available.**

3/16" - 80 ft. max. length • 1/4" - 55 ft. max. length

## Steel Wire Rope (For manual and power winch)

OZGAL.19-90	3/16" x 90'	Galvanized cable assembly
OZSS.19-90	3/16" x 90'	Stainless steel cable assembly
OZGAL.25-45	1/4" x 45'	Galvanized cable assembly
OZSS.25-45	1/4" x 45'	Stainless Steel cable assembly

All cable assemblies come with a swivel hook with latch.

**Custom cable length available.**

3/16" - 90 ft. max. length • 1/4" - 45 ft. max. length

## Synthetic Rope

OZSR.19-15	3/16" x 15'	Synthetic Rope
OZSR.19-50	3/16" x 50'	Synthetic Rope
OZSR.19-90	3/16" x 90'	Synthetic Rope
OZSR.25-50	1/4" x 50'	Synthetic Rope
OZSR.25-75	1/4" x 75'	Synthetic Rope
OZSR.31-45	5/16" x 45'	Synthetic Rope

All synthetic rope assemblies come with looped ends and pre-installed swivel hook with latch



## HEADACHE BALL

OZHB10

Keeps your wire rope tensioned even when lowering the hook with no load. Compatible with 3/16" and 1/4" wire rope assemblies. Headache balls sold separately from all davit cranes and wire rope assemblies.



## WIRE ROPE HOLDER

OZWRH

Secure your davit crane's wire rope with our durable and easy-to-use wire rope holder. For use with 3/16" and 1/4" ball end wire rope.



## WINCH COVER

OZECW



This weatherproof winch cover provides additional protection, keeping your electric winch clean, dry, and looking new. It is specially treated for cold weather use and is made from strong, water-resistant, black vinyl, featuring drawstring for quick closure and cable opening for easy installation. Made in the USA.





## DAVIT CRANE COVER

OZDAV-C1, OZDAV-C2

Protect your davit crane from the elements with this waterproof cover. Compatible with all OZ Lifting Products davit cranes.



## DAVIT CRANE MAST EXTENSION

OZEXT1-COMP, OZEXT1-TP, OZEXT2, OZEXT2-TP

Increase the height of your davit crane with our durable and easy-to-install mast extender. This extender is made of high-strength steel and is available in a variety of lengths to fit most davit cranes. Add 24 inches of additional height to your davit crane with this simple and effective solution.



## DAVIT CRANE LOCKING COLLAR



TP500-LC, TP1200-LC, SCF-LC

Keep your davit crane secure and prevent accidental rotation with our durable and easy-to-use locking collar.



## DAVIT CRANE ROLLER BAG

OZRB1

The OZ Lifting Products davit crane roller bag is a durable and convenient way to transport and protect your davit crane. Made of heavy-duty nylon, the bag features a padded interior and reinforced straps to keep your crane safe from scratches and dings. Plus, the convenient roller wheels make it easy to move your crane around. The bag also has a large capacity, so you can easily fit all of your crane's accessories inside.





**800.749.1064**  
**ozliftingproducts.com**



**Corporate Office:**

OZ Lifting Products  
1213 Innovation Drive  
Winona, MN 55987  
1 (800) 749-1064

**Sales/Tech Support:**

Ph: (507) 474-6250  
Tf: (800) 749-1064  
sales@ozliftingproducts.com

**Email Orders to:**

sales@ozliftingproducts.com

**Payment Remit to:**

OZ Lifting Products  
P.O. Box 845  
Winona, MN 55987

